

KaryoStat™ Results: iPS 637#7

1. KaryoStat™ analysis revealed iPS 637#7 originated from a female individual
2. Chromosomal aberrations were observed when comparing to the reference set (Table 2, Figure 4)
3. A partial mosaic chromosomal gain was detected on chromosome 5 in ~40% of the cells
4. A supplemental document with detailed information on the aberration will be provided to the Client

Chromosome	Type	Cytoband Start	CN State	Size (kbp)
5	GainMosaic	q23.1	2.60	61,163
5	Gain	q23.3	3.00	42,579
5	Gain	q35.2	3.00	2,929

Table 2: KaryoStat™ analysis. Chromosomal aberrations are indicated in the table shown. See supplemental data for more details.

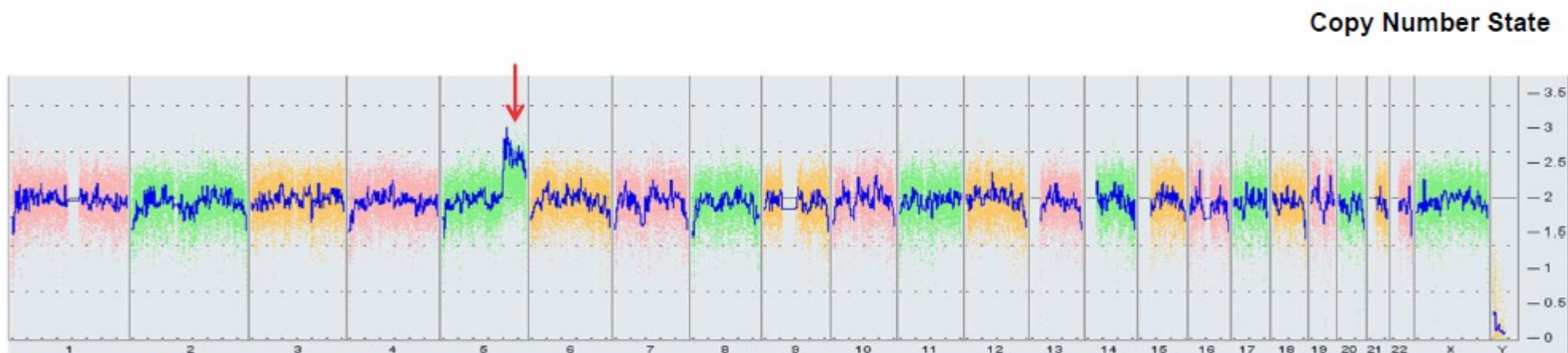


Figure 4: Whole genome view. The whole genome view displays all somatic and sex chromosomes in one frame with high level copy number. The smooth signal plot (right y-axis) is the smoothing of the log2 ratios which depict the signal intensities of probes on the microarray. A value of 2 represents a normal copy number state (CN = 2). A value of 3 represents chromosomal gain (CN = 3). A value of 1 represents a chromosomal loss (CN = 1). The pink, green and yellow colors indicate the raw signal for each individual chromosome probe, while the blue signal represents the normalized probe signal which is used to identify copy number and aberrations (if any). The whole genome view analysis revealed chromosomal aberrations indicated by the red arrow.

Disclaimer: This assay was conducted solely for the listed investigator/institution. The results of this assay are for research use only.