

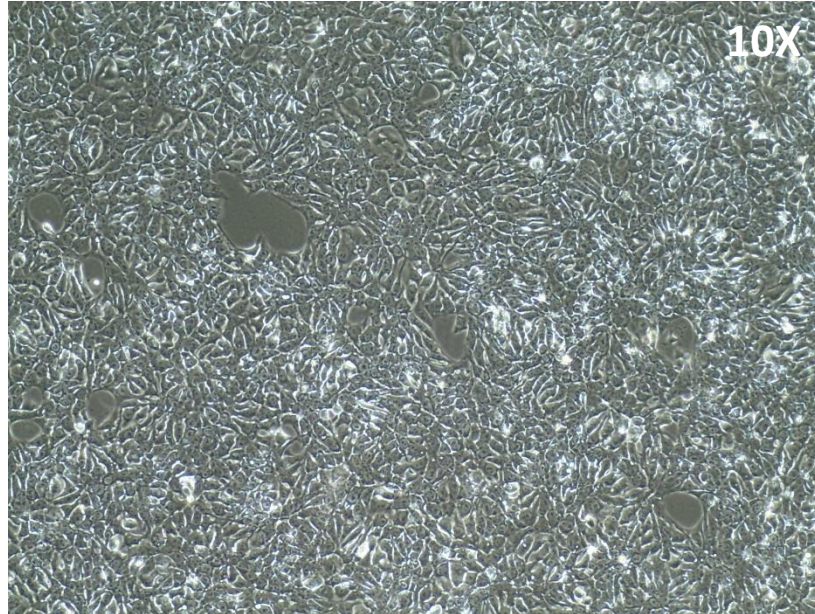
# Certificate of analysis

SFC160-03-01

# Viability post-thaw and Morphology according to SOP19 passage 15

- Cell count immediately post-thaw: 2.8M
- Viability immediately post-thaw: 97%

Photo at 24h post-thaw:



Sendai clearance  
according to WP3 SOP15:  
undetectable at passage 15

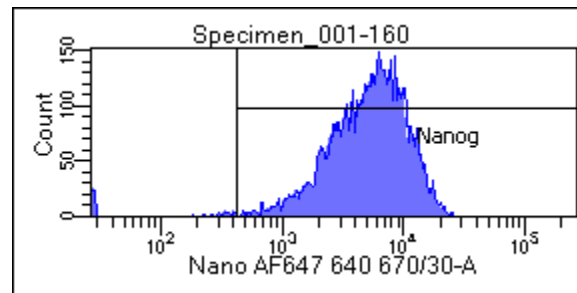
Mycoplasma test  
According to MycoAlert Lonza LT07-318:  
Undetectable at passage 15

> 1.2	<b>Mycoplasma Contaminated</b>	Positive Control	Negative Control
0.9-1.2	Status Unknown - Retest within 24 hours	2069	3338
0-0.9	<b>Mycoplasma Free</b>	73060	602.4
		<b>35.3117448</b>	<b>0.180467346</b>

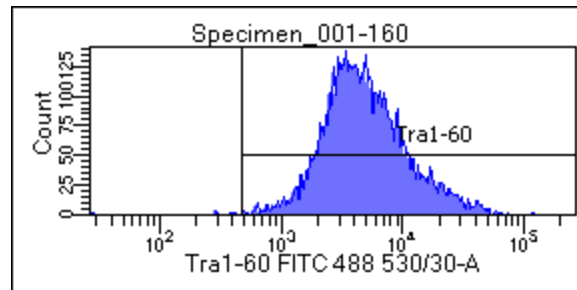
Date	21/11/2017
Cell name	SFC160-03-01
A	1047
B	406.0
B/A	<b>0.387774594</b>

# Flow cytometric analysis according to WP3 SOP 20 and 21 passage 15

Nanog: 98%



Tra-1-60: 99%



# SNP analysis

according to WP3 SOP Preparation of DNA  
and RNA samples for Illumina arrays

- Passage 15
- Karyotype abnormalities to be confirmed