



IPMAR

IPSC Platform to Model Alzheimer's Disease Risk

Certificate of analysis

DRICUi052-A

Operators: J Winston/C Bridge/R O'Donoghue

Date: 04/06/26

Supervisor: H Hall-Roberts

Date: 19/06/2026

Signature: *HCRoberts*

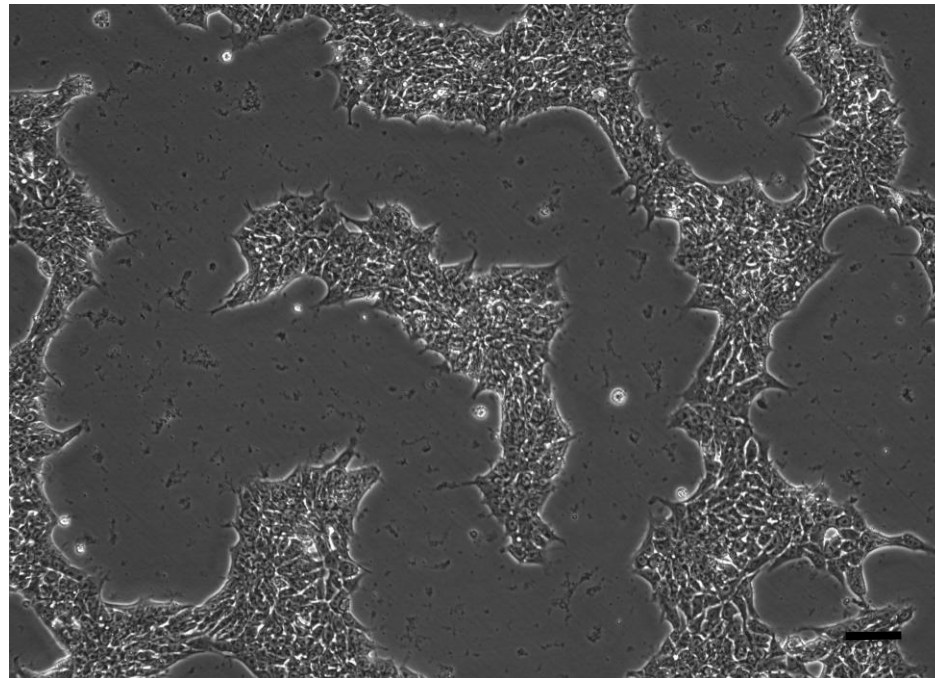
Source of cells and reprogramming information

- CF00C90003A T cells from Cardiff 28/03/23
- Reprogrammed at UOXF AKA IPMAR59
- Reprogrammed on 04/2023 Sally Cowley/
Sarah Ellwood (Oxford)
- Reprogramming system Cytotune v2
- Clone DRICUi052-A = IPMAR59A2
- Banked at p16, 31/07/24, Jincy Winston
(Cardiff)

Viability post-thaw and Morphology according to JMSCFSOP19 passage 17

- Vial cell count immediately post-thaw 1.93×10^6
- Viability immediately post-thaw 93.2%
- Photo at day 2 post-thaw (scale bar = $100\mu\text{m}$):

Day 2 post-thaw, 25% plated to 1w.6wp

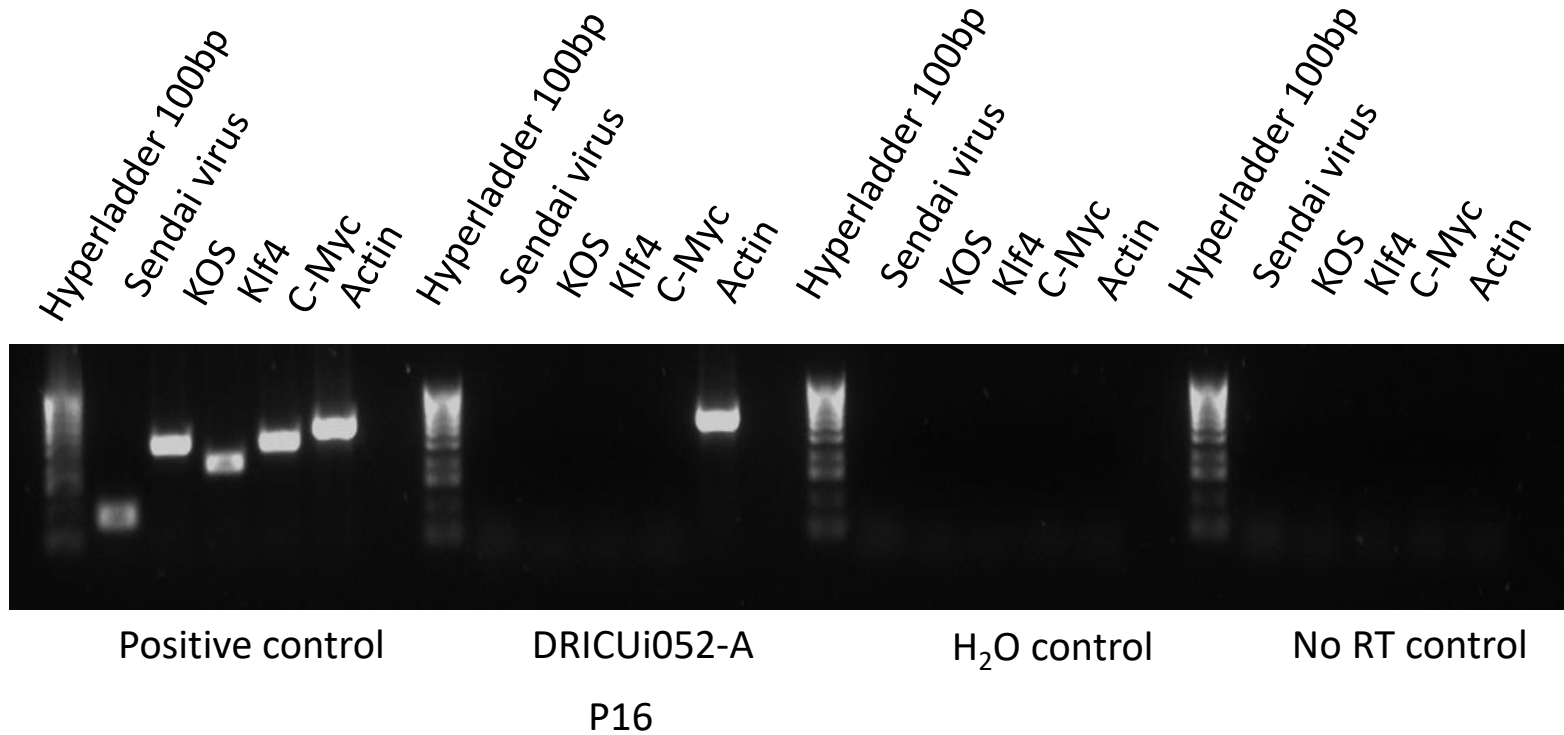


Sterility:

Mycoplasma test performed by Eurofins Genomics on 10/03/2026, undetectable at passage 18.

Visual inspection of thawed cells cultured without antibiotic/antimycotic for 4 days:
no evidence of bacteria, yeast or fungus.

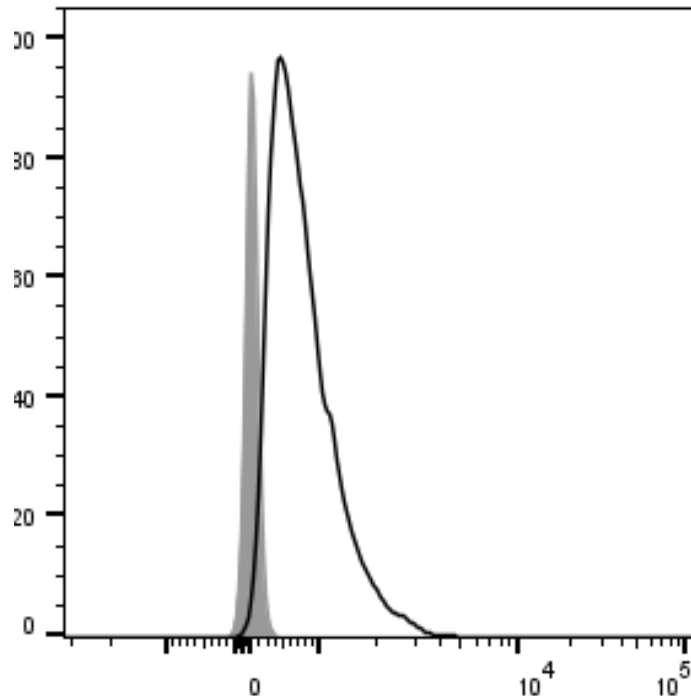
Sendai Cytotune 2 clearance: according to Cytotune manual Virus undetectable at passage 16



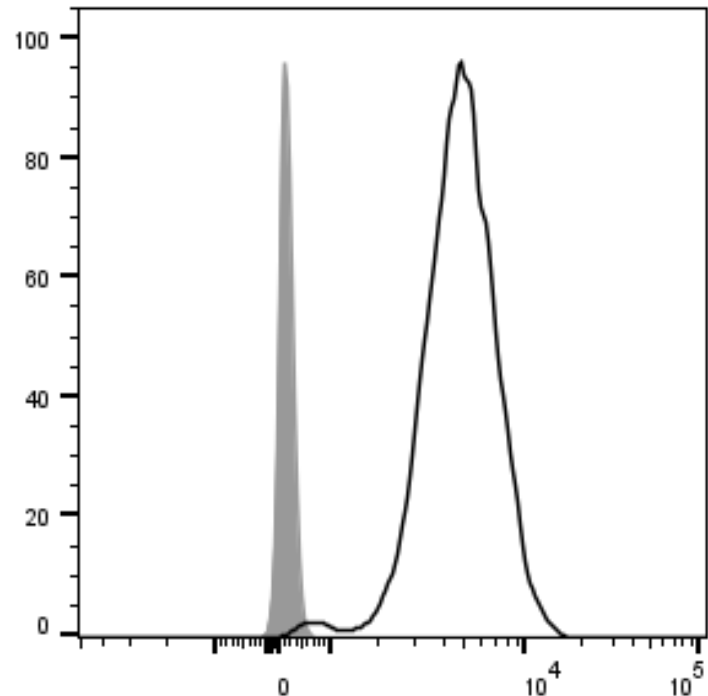
Product sizes: SeV 181bp; KOS 528bp; SeV-Klf 410bp; SeV-Myc 532bp; Actin 623bp

Flow cytometric analysis according to JMSCFSOP05 passage 17

DRICUi052-A TRA-1-60 92.3%



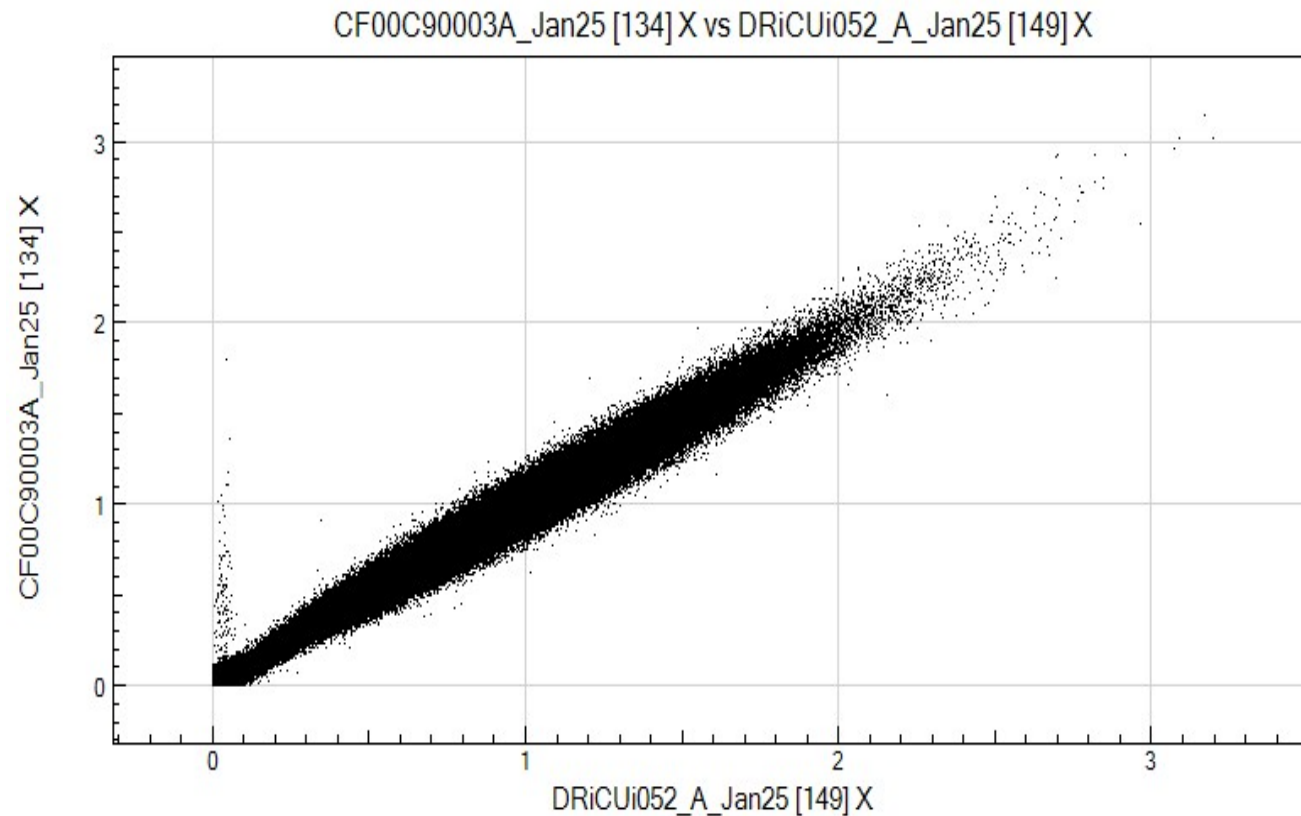
DRICUi052-A Nanog 99.5%



Illumina GSA SNP analysis according to JMSCFSOP16

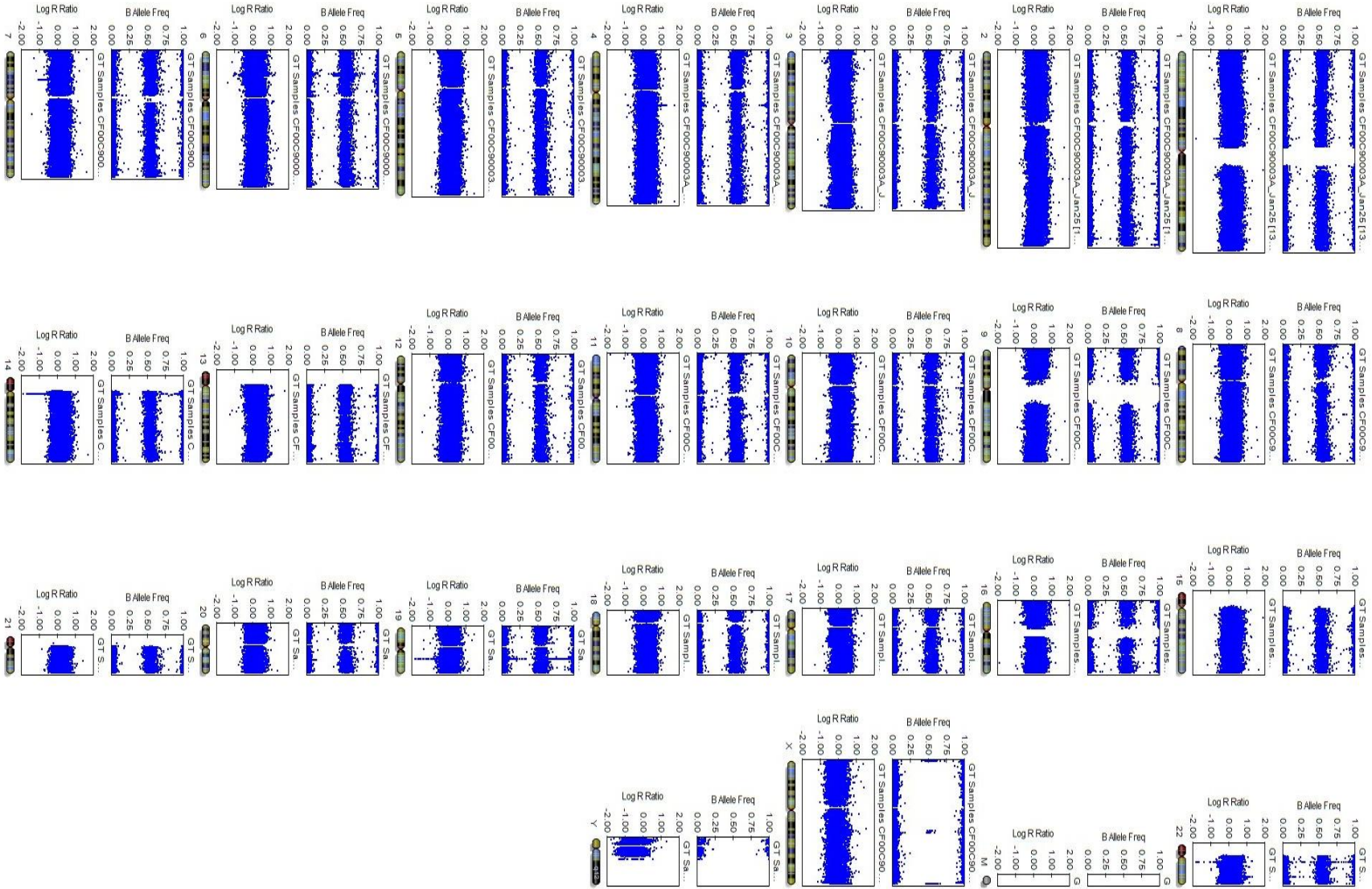
- Passage 16
- Identity to parent PBMC confirmed
- Karyotype abnormalities:
 - No gross abnormalities detected vs PBMC

Alignment of CF00C90003A PBMC SNPs with DRiCUi052-A



Regression Coefficient R^2 : 0.9900

Karyogram CF00C90003A PBMC



Karyogram DRICUi052-A

