



# Certificate of analysis

SFC834-03-03

Operator: Jane Vowles

Date:04/09/2014

Supervisor: Sally Cowley

Date:12/10/2014

Signature:

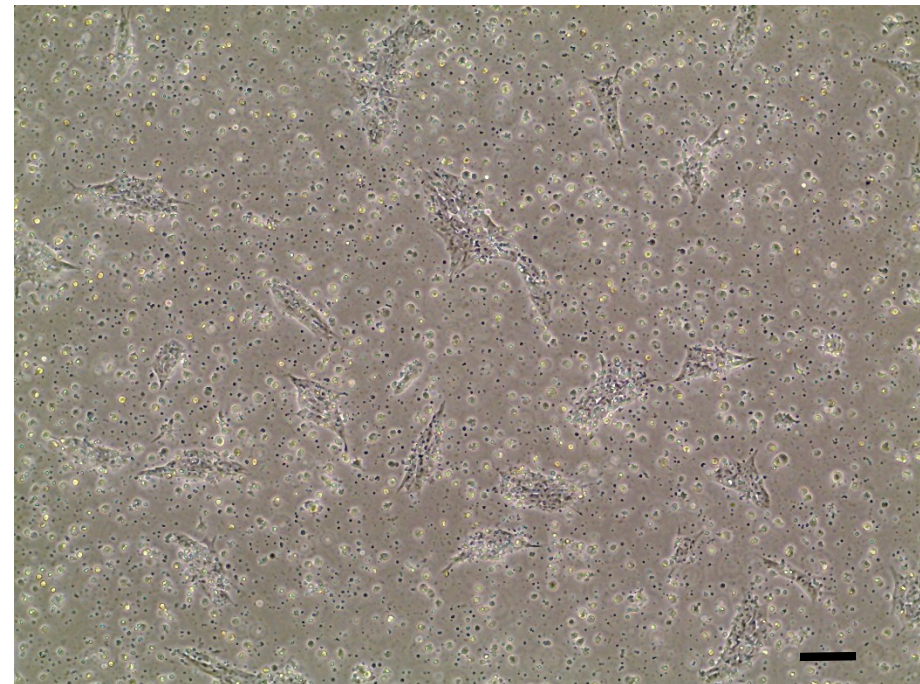
*SACowley*

# Source of fibroblasts and reprogramming information

- SF834 from UOXF 13/09/2012
- Reprogrammed at UOXF JMSCF JV
- Reprogrammed on 17/07/13 at passage 4
- Cytotune v1 WP3 SOP10

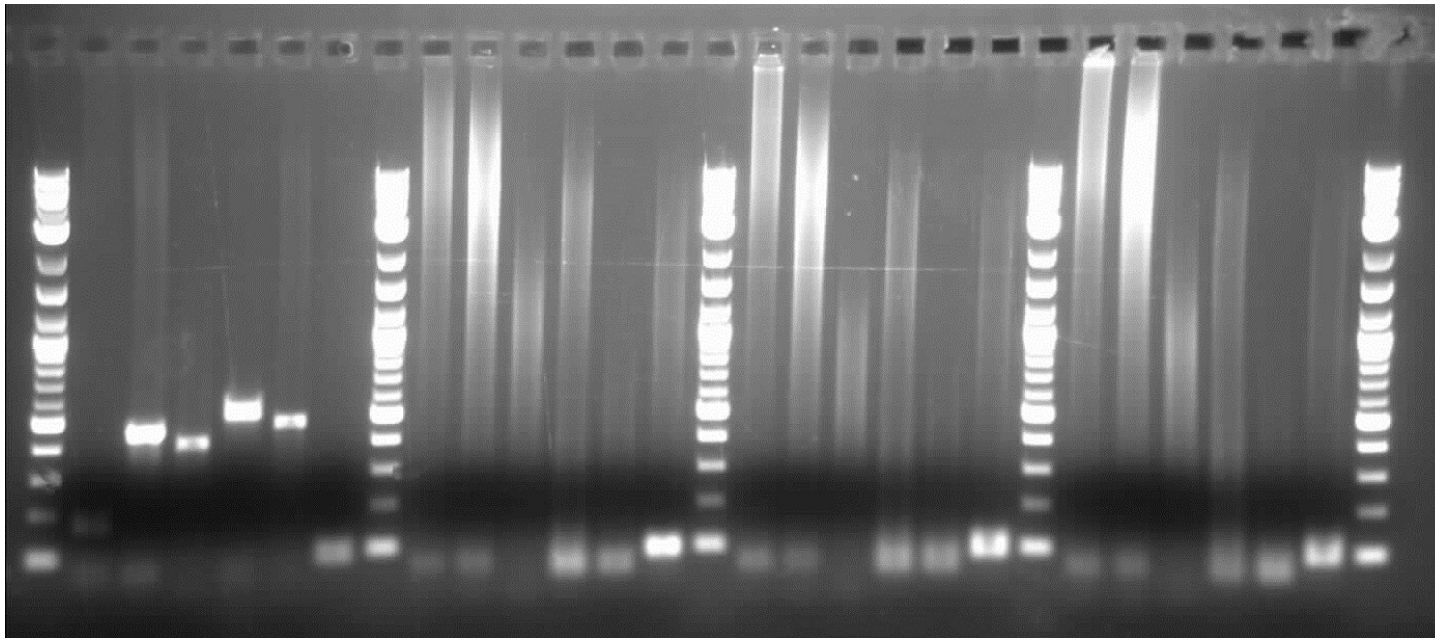
# Viability post-thaw and Morphology according to SOP19 passage 21

- Cell count immediately post-thaw  $5.15 \times 10^6$
- Viability immediately post-thaw 84%
- Photo at 24h post-thaw (scale bar = 100 $\mu$ m):



# Sendai clearance: according to WP3 SOP15 undetectable at passage 21

Log2 ladder  
Sendai virus  
Sox2  
Klf4  
C-Myc  
Oct3/4  
Actin  
Log2 ladder  
Sendai virus  
Sox2  
Klf4  
C-Myc  
Oct3/4  
Actin  
Log2 ladder  
Sendai virus  
Sox2  
Klf4  
C-Myc  
Oct3/4  
Actin  
Log2 ladder  
Sendai virus  
Sox2  
Klf4  
C-Myc  
Oct3/4  
Actin



+ control

SFC834-03-01

SFC834-03-03

SFC834-03-10

Product sizes: SeV 181bp; SeV-Sox 451bp; SeV-Klf 410bp; SeV-Myc 532bp; SeV-Oct 483bp; Actin 92bp

# Mycoplasma test:

## According to MycoAlert Lonza LT07-318

### Undetectable at passage 21

Sample	Initial	Passage no.	Reading 1	Reading 2	Ratio / Status
+ve Control			5.821	128.04	<b>22.00</b>
-ve Control			8.422	0.644	<b>0.08</b>
1. SFC 834-03-03	CB	p21	3.524	0.976	<b>0.28</b>

Results mean

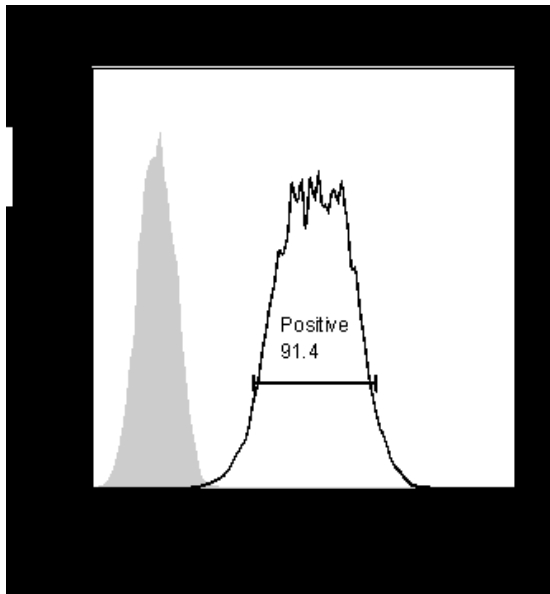
Ratio **0 - 0.999** negative for mycoplasma

Ratio **1 – 1.3** Borderline Result (retest required)

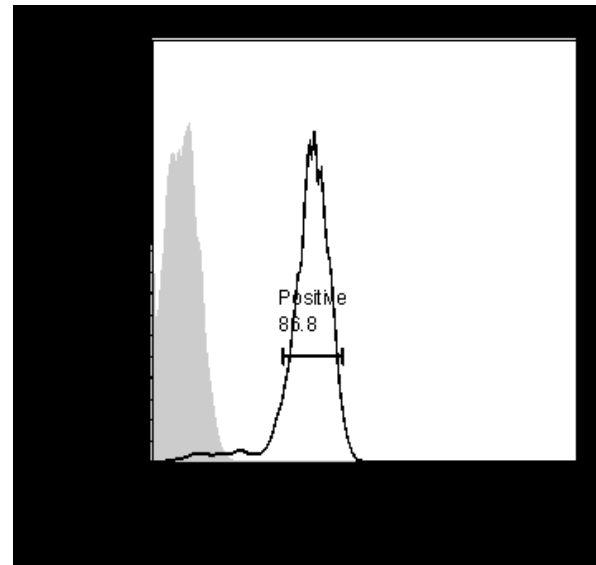
Ratio above **1.3** positive for mycoplasma

# Flow cytometric analysis according to WP3 SOP 20 and 21 passage 21

Tra-1-60:



NANOG:



# SNP analysis

according to WP3 SOP Preparation of DNA and RNA samples for Illumina arrays

- Passage 21
- Identity to parent fibroblasts confirmed
- Karyotype abnormalities acceptable: C15 LOH as observed in parent fibroblast; also modest allelic imbalance C6
- For details and raw data see StemDB