



# Certificate of analysis

SFC832-03-07

Operator: Cathy Browne

Date: 12/01/15

Supervisor: Sally Cowley

Date: 22/04/2015

Signature:

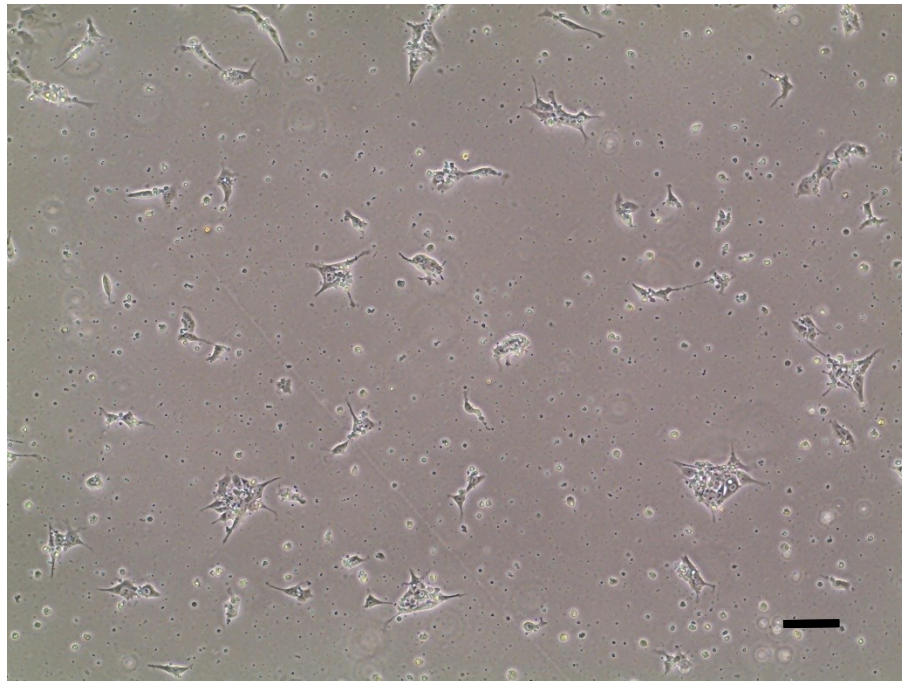
*SACowley*

# Source of fibroblasts and reprogramming information

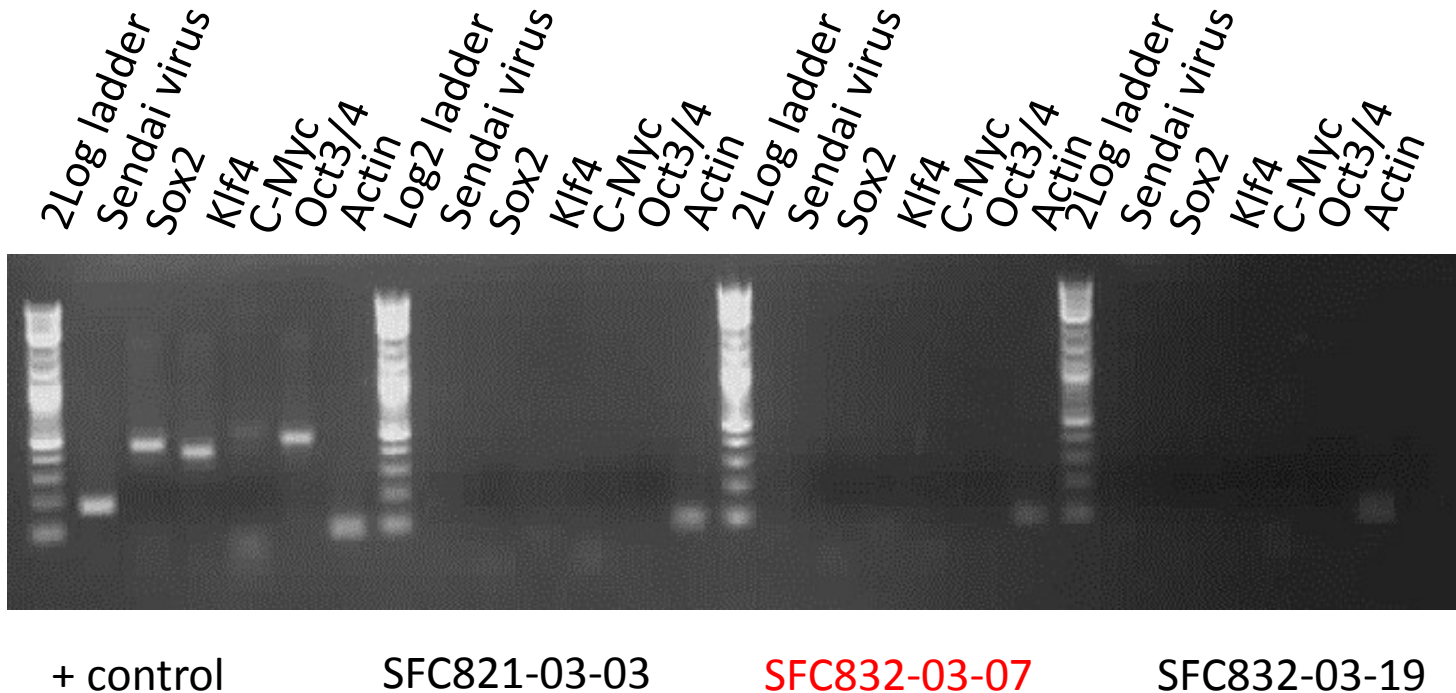
- SF832 from UOXF 03/07/12
- Reprogrammed at UOXF JMSCF JV
- Reprogrammed on 17/07/13 at passage 4
- Cytotune v1 WP3 SOP10

# Viability post-thaw and Morphology according to SOP19 passage no.16

- Cell count immediately post-thaw  $1.38 \times 10^6$
- Viability immediately post-thaw 80.15%
- Photo at 24h post-thaw (scale bar = 100 $\mu$ m):



# Sendai clearance: according to WP3 SOP15 undetectable at passage 16



Product sizes: SeV 181bp; SeV-Sox 451bp; SeV-Klf 410bp; SeV-Myc 532bp; SeV-Oct 483bp; Actin 92bp

# Mycoplasma test:

## According to MycoAlert Lonza LT07-318

### Undetectable at passage 16

| Sample           | Passage | Initials | Reading 1 | Reading 2 | Ratio / Status |
|------------------|---------|----------|-----------|-----------|----------------|
| +ve Control      |         |          | 5.053     | 172       | <b>34.04</b>   |
| -ve Control      |         |          | 6.852     | 0.758     | <b>0.111</b>   |
| 1. SFC 832-03-07 | p16     | CB       | 1.661     | 0.772     | <b>0.465</b>   |

Results mean

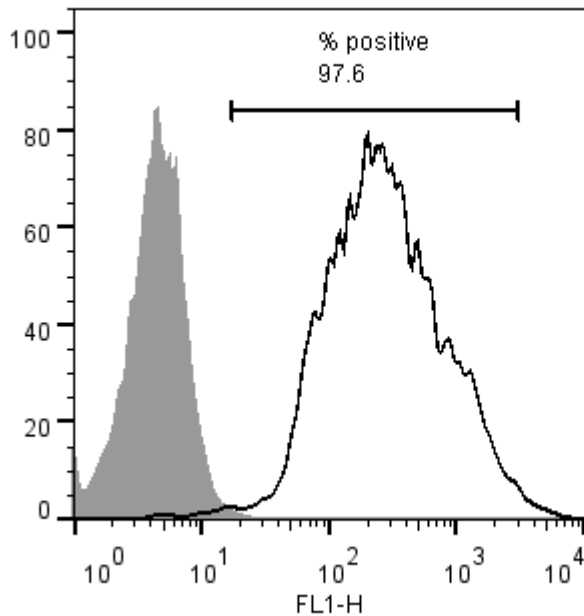
Ratio **0 - 0.999** negative for mycoplasma

Ratio **1 – 1.3** Borderline Result (retest required)

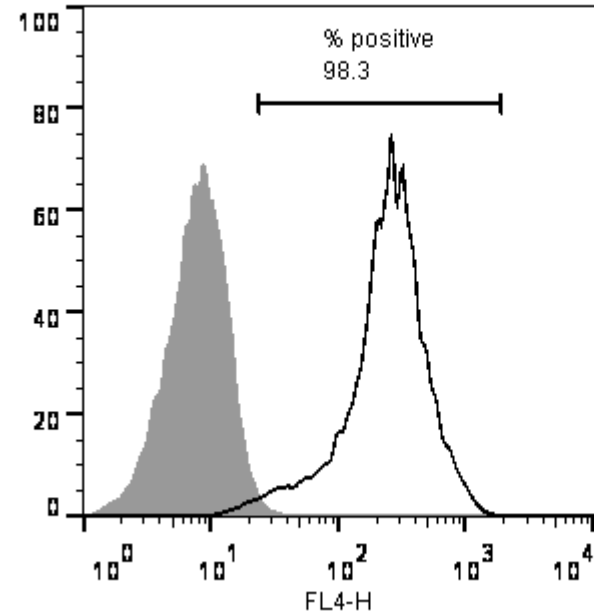
Ratio above **1.3** positive for mycoplasma

# Flow cytometric analysis according to WP3 SOP 20 and 21 passage 16

Tra-1-60:



NANOG:



# SNP analysis

according to WP3 SOP Preparation of DNA and RNA samples for Illumina arrays

- Passage 16
- Identity to parent fibroblasts confirmed
- Karyotype abnormalities: none detected
- For details and raw data see StemDB