



Certificate of analysis

SFC028-03-08

Operator: C Browne

Date: 11/11/16

Supervisor: Sally Cowley

Date: 14/07/2017

Signature:

SACowley

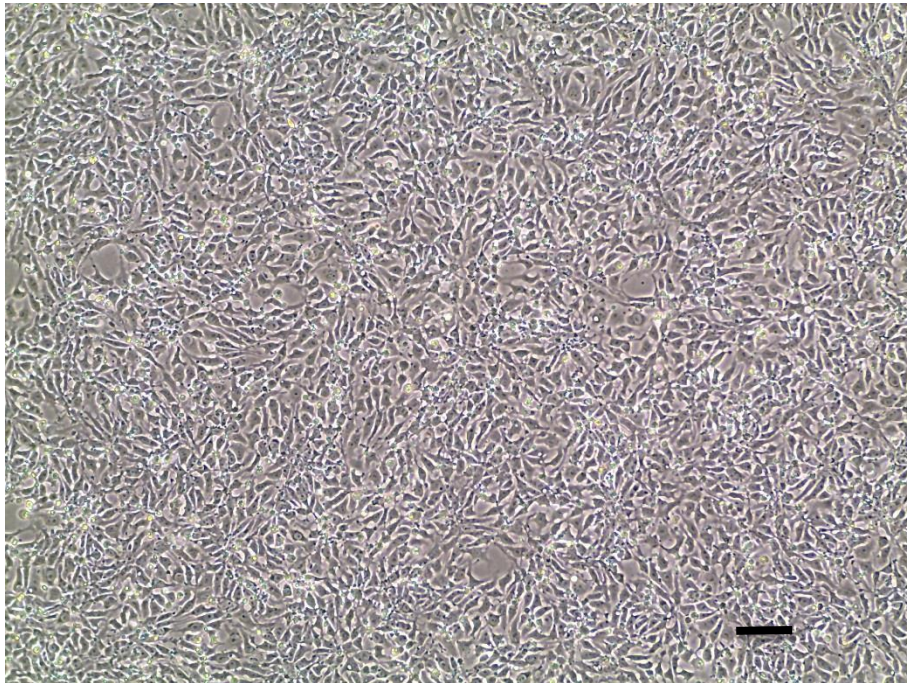
Source of fibroblasts and reprogramming information

- SF028 from Luebeck
- 17/02/2014
- Reprogrammed at UOXF-S
- Reprogrammed on 22/06/2016 at passage 3/CB
- Cytotune v2 WP3 SOP10

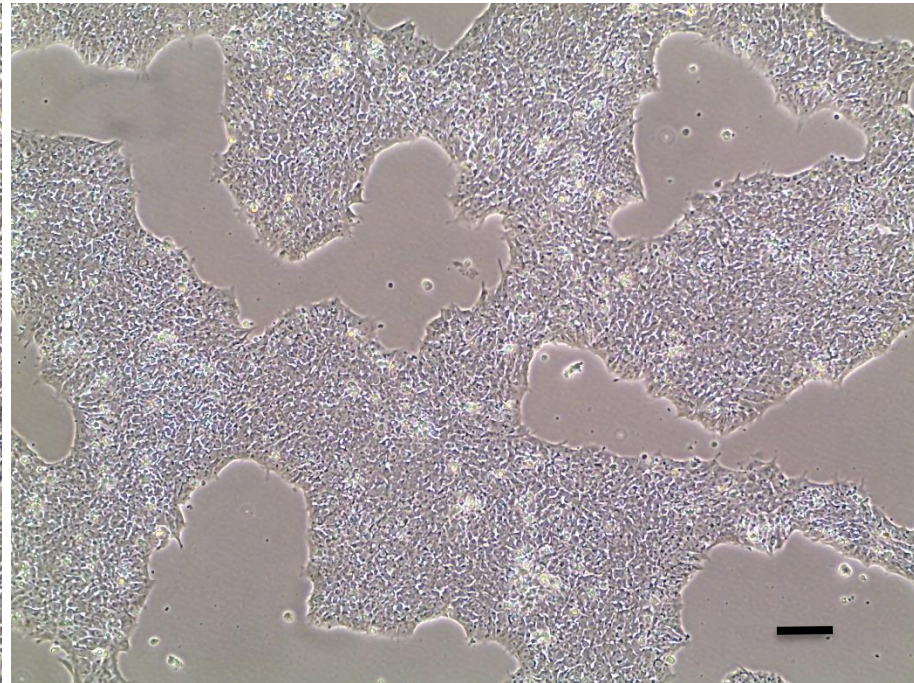
Viability post-thaw and Morphology according to SOP19 passage12

- Cell count immediately post-thaw 2.86×10^6
- Viability immediately post-thaw 89.9%
- Photo at 24h and day 2 post-thaw (scale bar = 100 μ m):

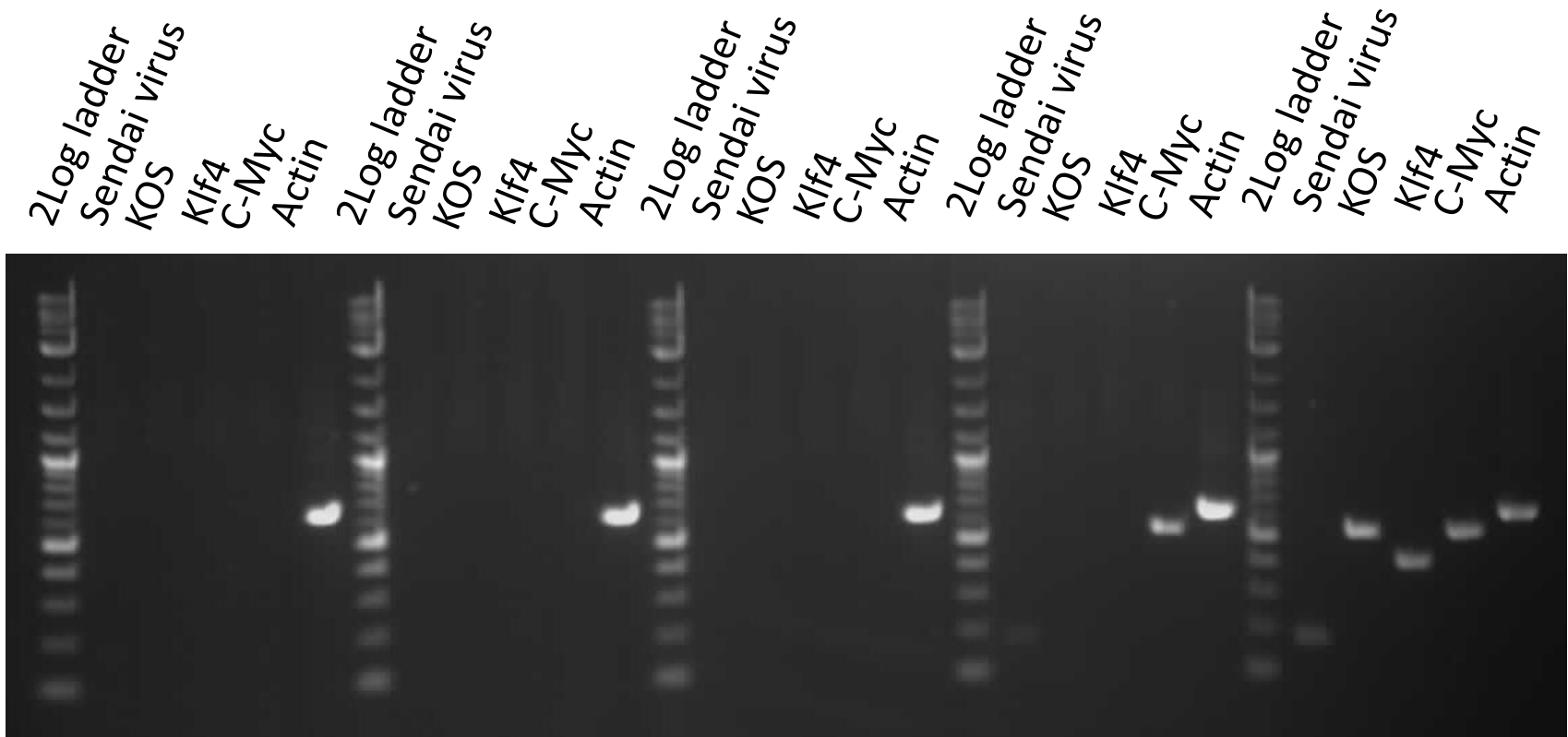
24h post-thaw 80% plated



Day 2 post-thaw 20% plated



Sendai clearance: according to WP3 SOP15 undetectable at passage 12



SFC028-03-08

SFC030-03-02

SFC073-03-08

SFC074-03-06

+ control

Product sizes: SeV 181bp; KOS 528bp; SeV-Klf 410bp; SeV-Myc 532bp; Actin 623bp

Mycoplasma Test:

According to MycoAlert Lonza LT07-318

undetectable at passage 12

Sample	Clone	Passage number	Initial	Reading 1	Reading 2	Ratio/Status
+ve control				9.758	190.9	19.56
-ve control				10.53	0.975	0.09
1	SFC028-03-08	p12	CB	3.581	1.076	0.30

Results mean

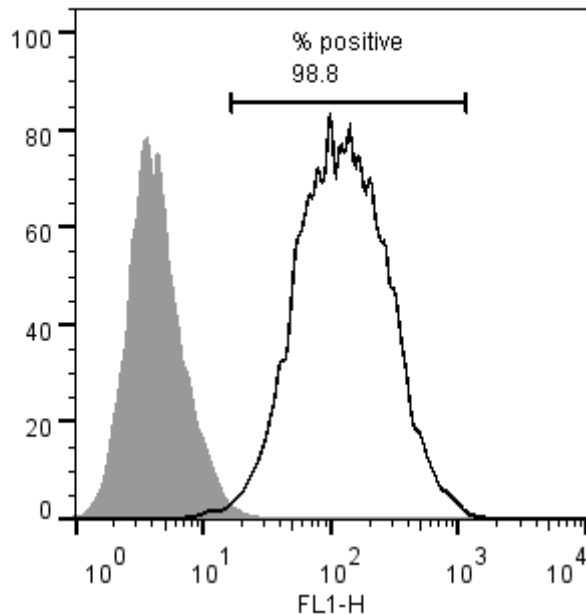
Ratio **0 - 0.999** negative for mycoplasma

Ratio **1 – 1.3** Borderline Result (retest required)

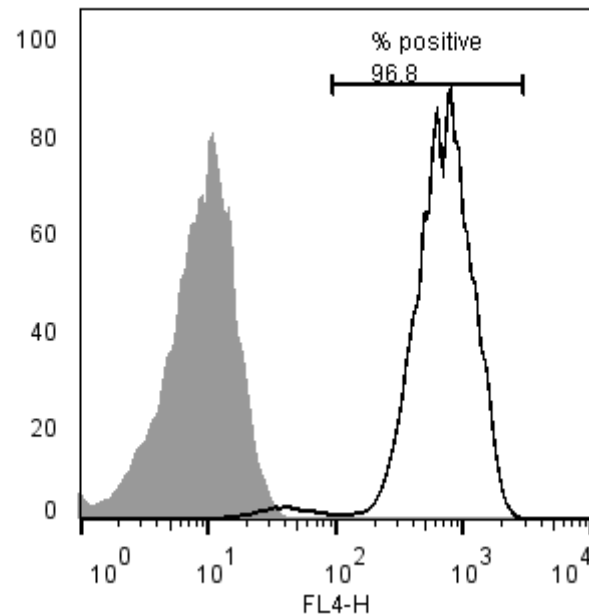
Ratio above **1.3** positive for mycoplasma

Flow cytometric analysis according to WP3 SOP 20 and 21 passage 12

Tra-1-60:



NANOG:



SNP analysis

according to WP3 SOP Preparation of DNA
and RNA samples for Illumina arrays

- Passage p12
- Identity to parent fibroblasts confirmed
- Karyotype abnormalities: none detected
- For details and raw data see StemDB