



Certificate of analysis

SFC848-03-04

Operator: C Browne

Date: 06/07/15

Supervisor: Sally Cowley

Date: 15.09.2015

Signature:

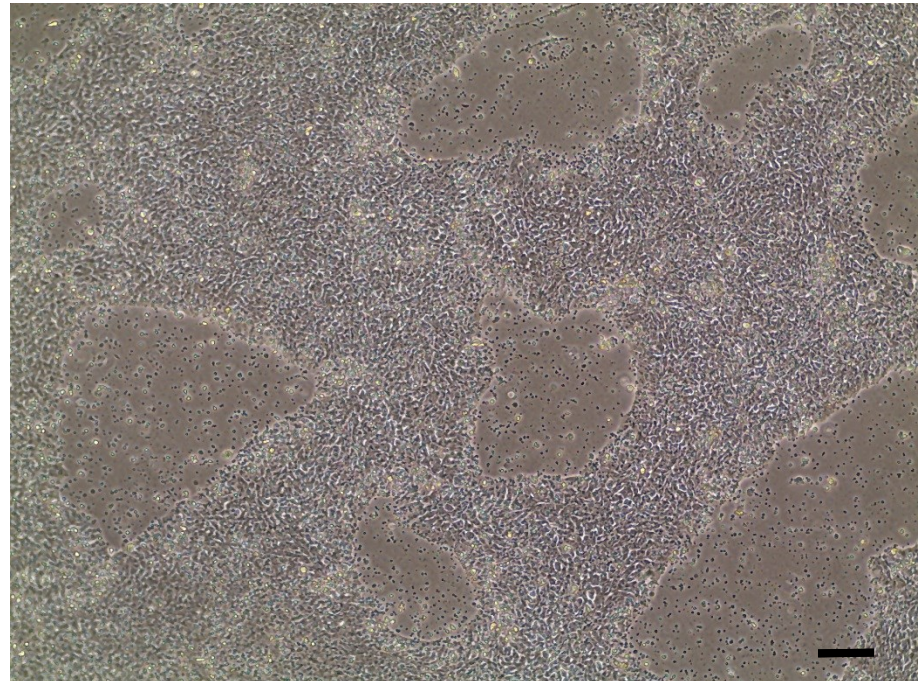
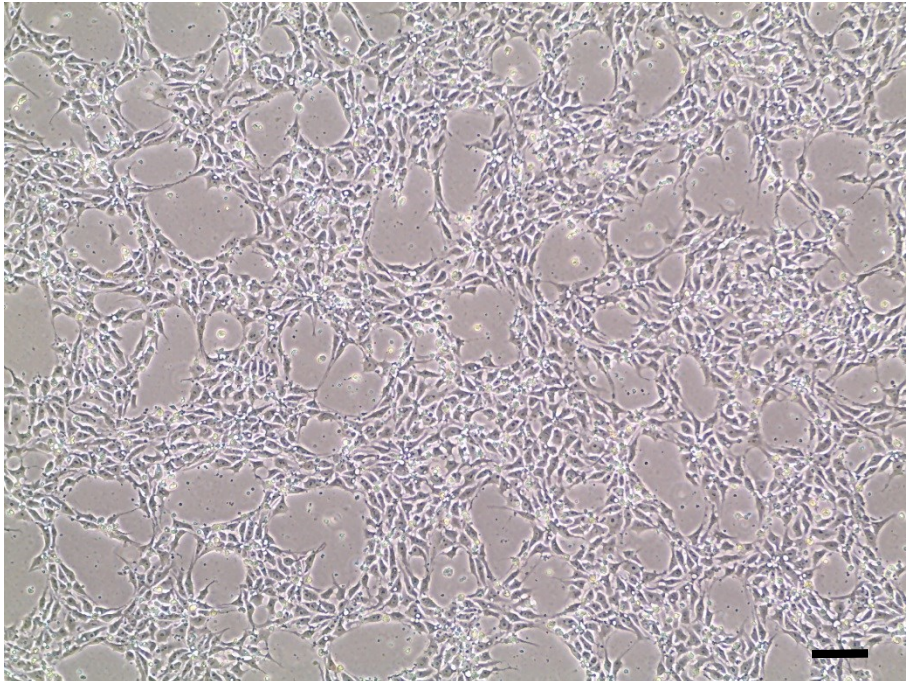
SACowley

Source of fibroblasts and reprogramming information

- SF848 from UOXF 05/10/12
- Reprogrammed at UOXF JMSCF AB
- Reprogrammed on 14/08/14 at passage 3
- Cytotune v1 WP3 SOP10

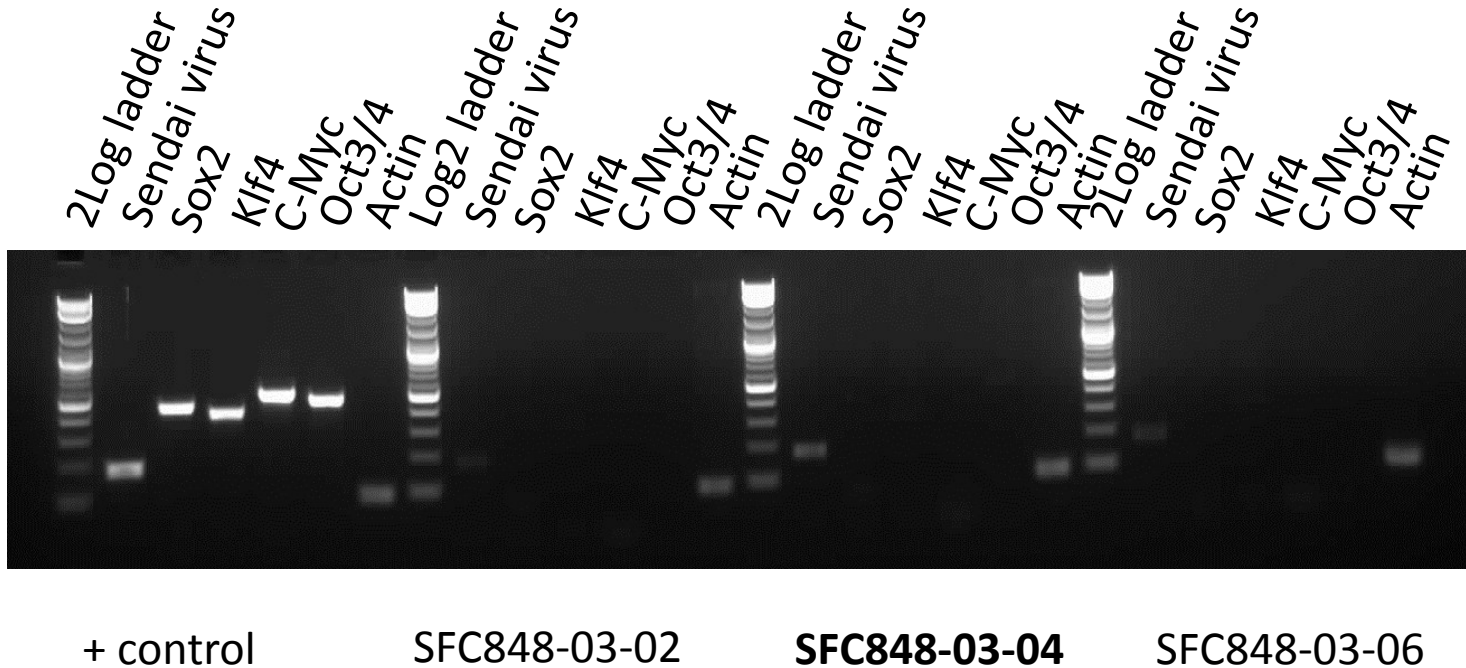
Viability post-thaw and Morphology according to SOP19 p21

- Cell count immediately post-thaw 2.42×10^6
- Viability immediately post-thaw 88.8%
- Photo at 24h & day 6 post-thaw (scale bar = $100\mu\text{m}$):



Sendai clearance:
according to WP3 SOP15
undetectable at passage 21

except for some residual SeV backbone



Product sizes: SeV 181bp; SeV-Sox 451bp; SeV-Klf 410bp; SeV-Myc 532bp; SeV-Oct 483bp; Actin 92bp

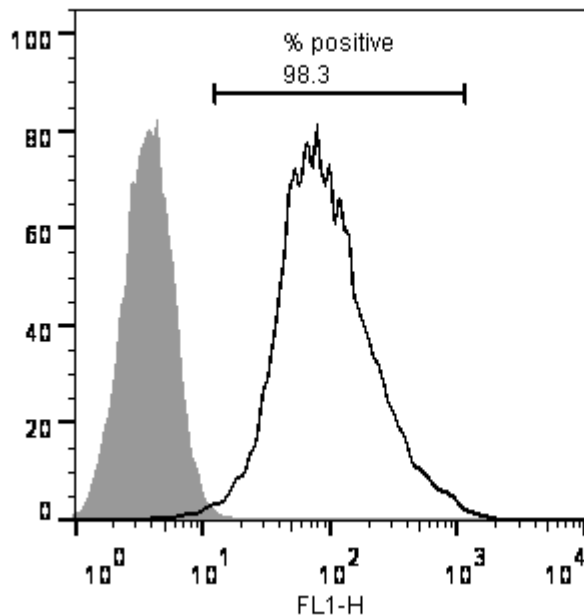
Mycoplasma Test:

According to MycoAlert Lonza LT07-318 undetectable at passage 21

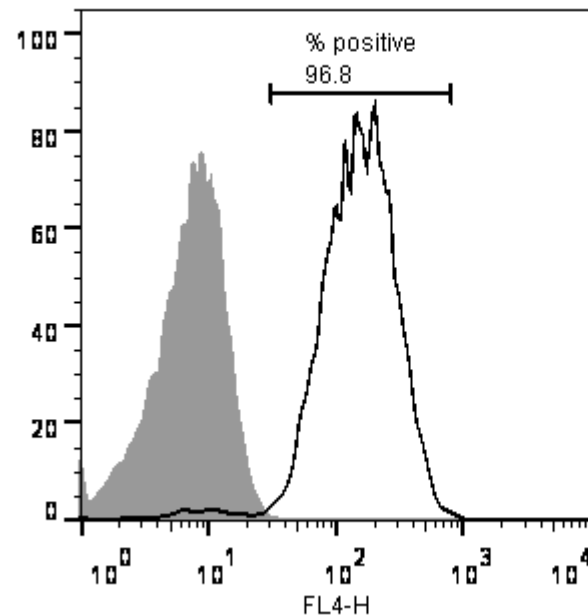
Sample	Clone	Passage number	Initial	Reading 1	Reading 2	Ratio/Status
+ve control				8.539	88.04	10.31
-ve control				9.475	0.883	0.09
2	SFC848-03-04	p21	CB	4.257	1.152	0.27
Results mean						
Ratio 0 - 0.999 negative for mycoplasma						
Ratio 1 – 1.3 Borderline Result (retest required)						
Ratio above 1.3 positive for mycoplasma						

Flow cytometric analysis according to WP3 SOP 20 and 21 passage p21

Tra-1-60:



NANOG:



SNP analysis

according to WP3 SOP Preparation of DNA and RNA samples for Illumina arrays

- Passage p21
- Identity to parent fibroblasts confirmed
- Karyotype abnormalities: none detected
- For details and raw data see StemDB