

## Identity and growth

---

Date - 09/12/2013

Cell line ID -NCRM-2

Subline - N/A

Cell line submitter - NIH Center for Regenerative Medicine

RUID SNP panel - available upon request

Source cell type - CD34<sup>+</sup> cord blood

Reprogramming method - episomal plasmid

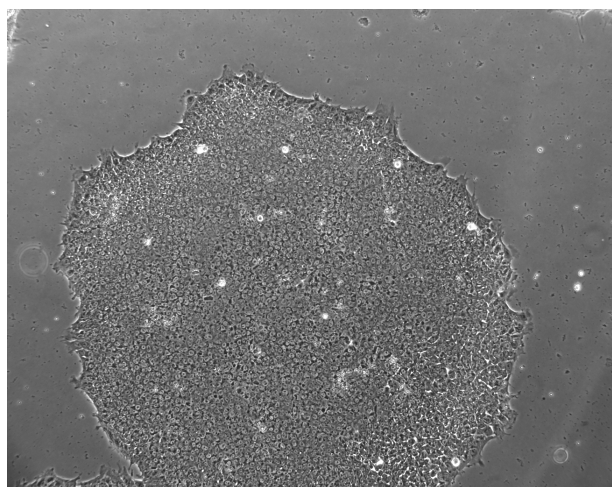
Growth conditions - mTeSR and Matrigel

Passage method - Dispase (SOP SC14)

Pre-freeze mycoplasma testing - pass

Morphology - pass

Karyotype - N/A



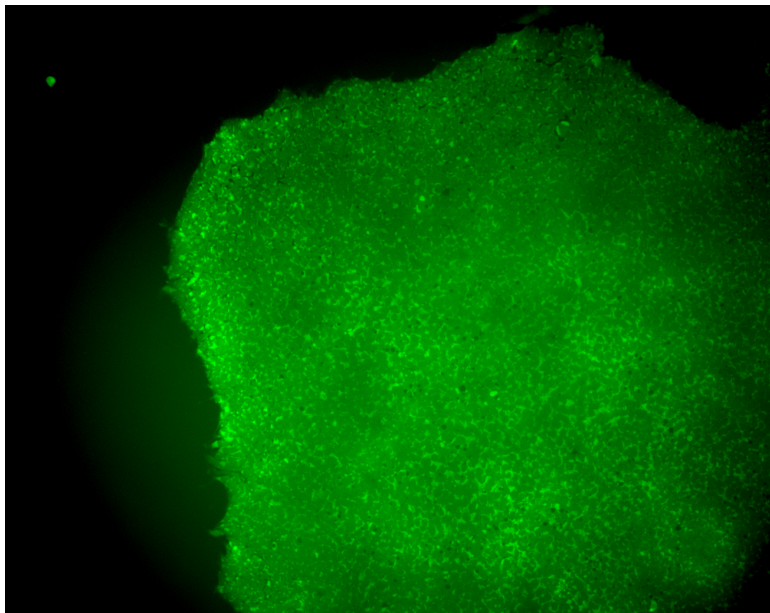
Array cGH - N/A

# Pluripotency

---

Alkaline Phosphatase Staining - N/A

Immunohistochemistry - N/A



Pluritest analysis - N/A

# In Vitro Differentiation - N/A

---

---

## Cryopreservation

---

Cryopreservation date - 09/04/2012

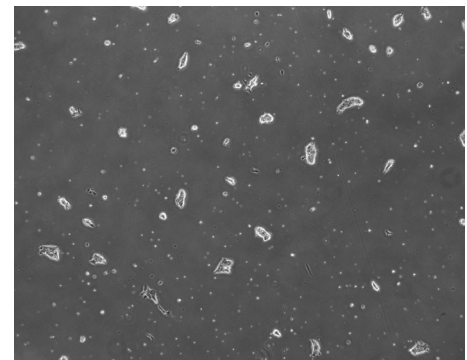
Cryopreservation method - Accutase and mFreSR (SOP SC13)

Passage number - 20

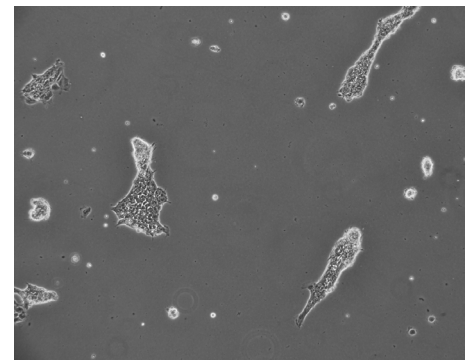
Post thaw mycoplasma testing - negative

Recommended thaw density per 9.6cm <sup>2</sup> ( 1 well of a 6 well plate)	2e6
At least 10 colonies after 3 days (+/-)	+
At least 50% pluripotent based on morphology (+/-)	+

Post thaw morphology - pass



4x magnification 3 days after thaw



10x magnification 3 days after thaw

Post thaw FACS analysis - 97.47% Oct4/Tra-1-60 double positive

