



IPMAR

IPSC Platform to Model Alzheimer's Disease Risk

Certificate of analysis

DRICUi036-A

Operators: C Bridge/J Winston/R O'Donoghue

Date: 03/06/2026

Supervisor: H Hall-Roberts

Date: 19/06/2026

Signature: *HCRoberts*

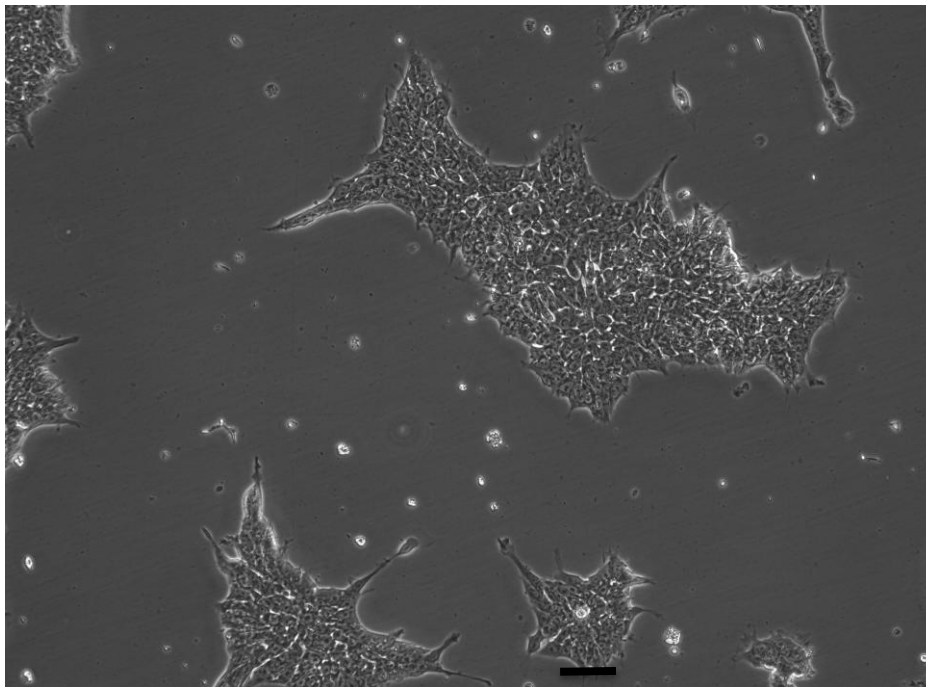
Source of cells and reprogramming information

- DB29A10005A T cells from Cardiff 26/10/22
- Reprogrammed at UOXF AKA IPMAR42
- Reprogrammed on 01/2023 Sally Cowley/
Sarah Ellwood (Oxford)
- Reprogramming system Cytotune v2
- Clone DRICUi036-A = IPMAR42A3
- Banked at p13, Dec 2023, Emily Maguire
(Cardiff)

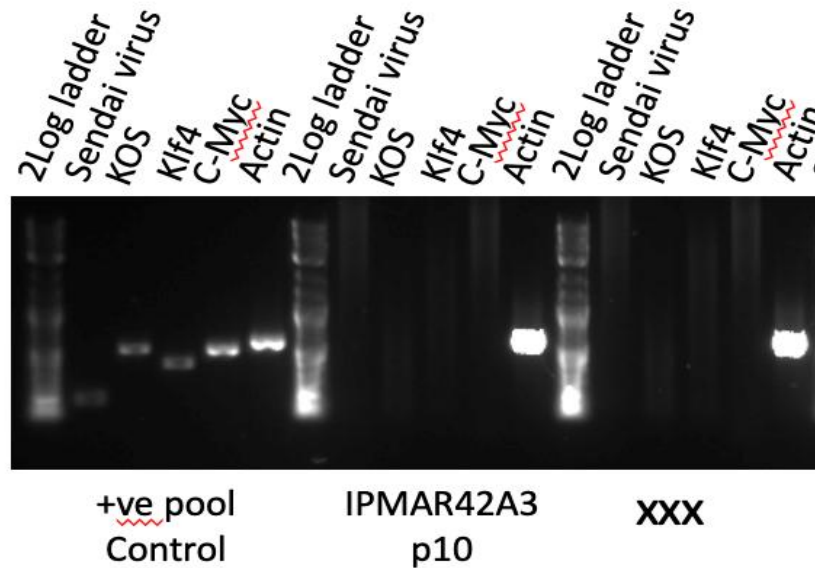
Viability post-thaw and Morphology according to JMSCFSOP19 passage 14

- Vial cell count immediately post-thaw 1.57×10^6
- Viability immediately post-thaw 87.3%
- Photo at day 2 post-thaw (scale bar = $100\mu\text{m}$):

Day 2 post-thaw, 25% plated to 1w.6wp



Sendai Cytotune 2 clearance: according to Cytotune manual Virus undetectable at passage 10



Product sizes: SeV 181bp; KOS 528bp; SeV-Klf 410bp; SeV-Myc 532bp; Actin 623bp

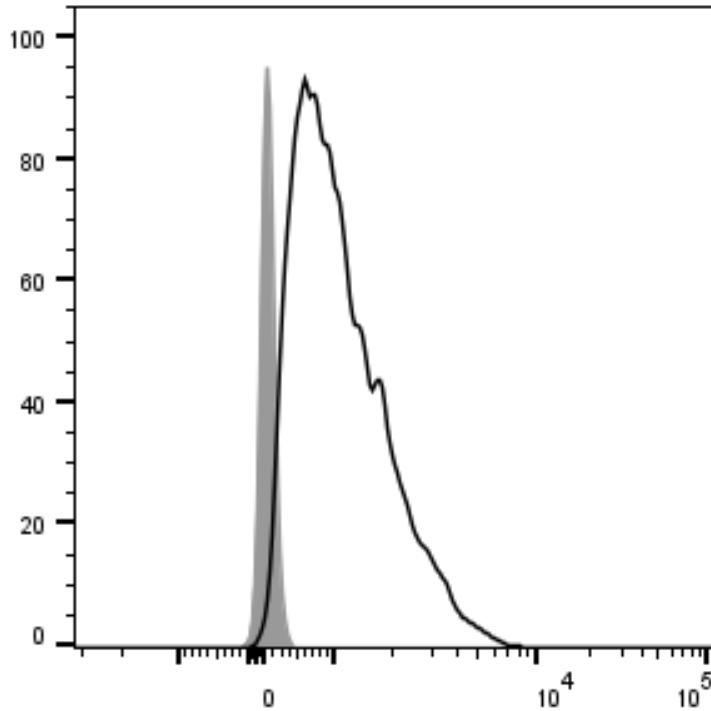
Sterility:

Mycoplasma test performed by Eurofins Genomics on 27/04/2026, undetectable at passage 16.

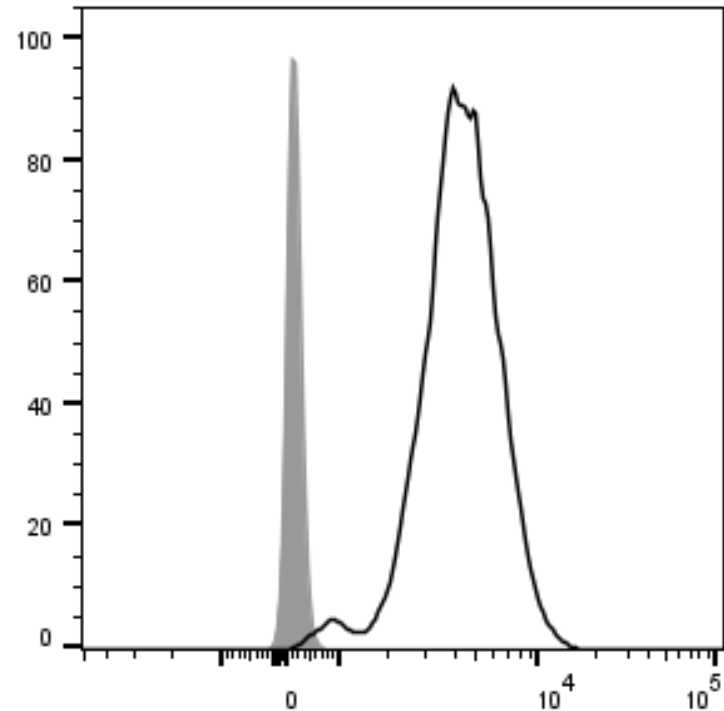
Visual inspection of thawed cells cultured without antibiotic/antimycotic for 4 days:
no evidence of bacteria, yeast or fungus.

Flow cytometric analysis according to JMSCFSOP05 passage 14

DRICUi036-A TRA-1-60 92.0%



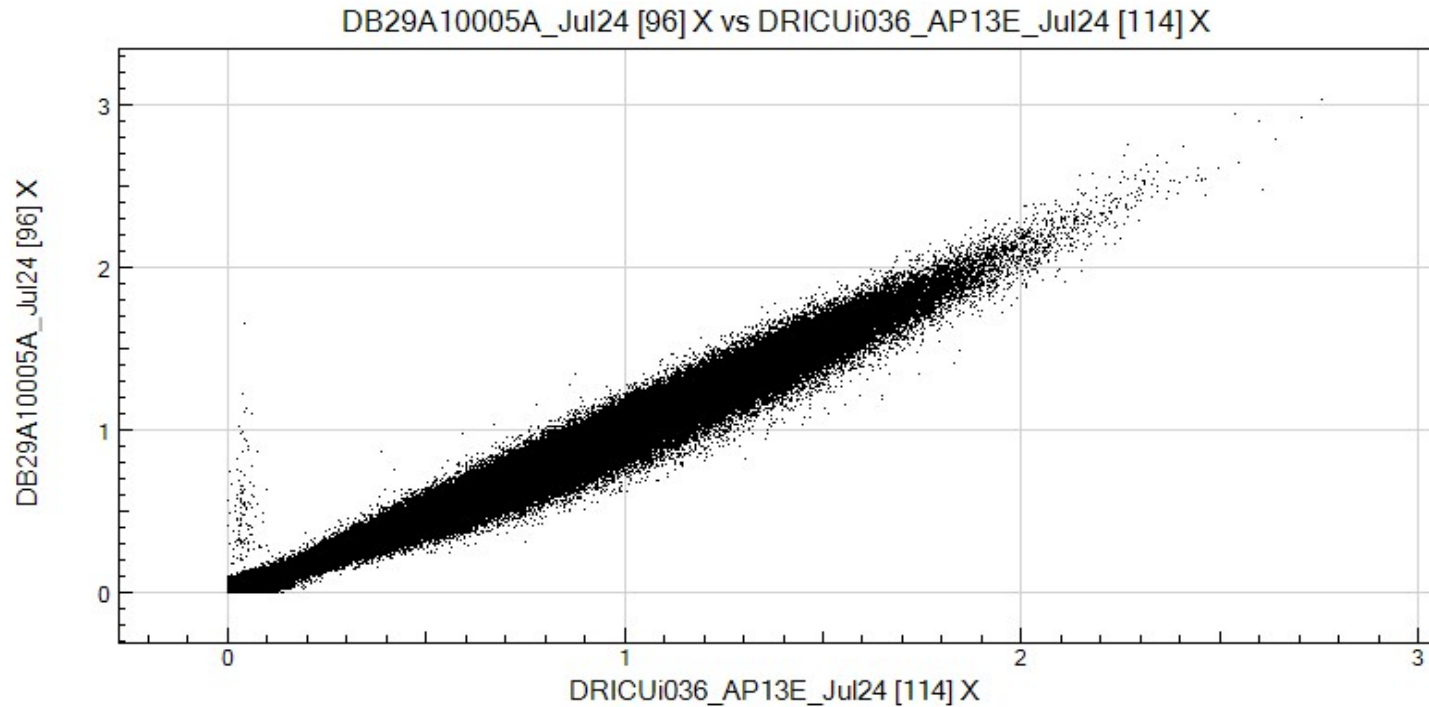
DRICUi036-A Nanog 99.4%



Illumina GSA SNP analysis according to JMSCFSOP16

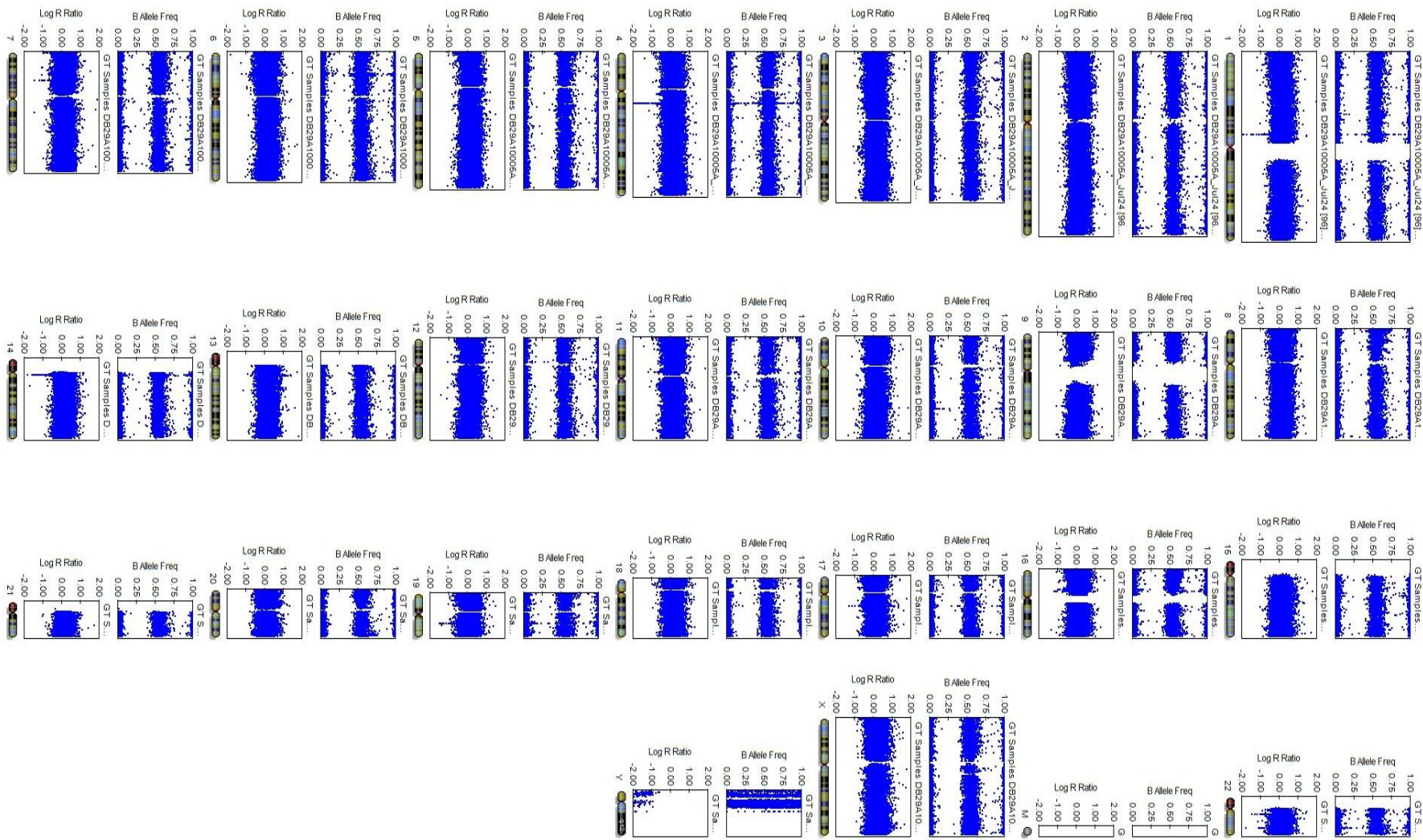
- Passage 13
- Identity to parent PBMC confirmed
- Karyotype abnormalities:
 - No gross abnormalities detected vs PBMC

Alignment of DB29A10005A PBMC SNPs with DRICUi036-A



Regression Coefficient R^2 : 0.9879

Karyogram DB29A10005A PBMC



Karyogram DRICUi036-A

