

# Certificate of analysis

SFC301-01-01

Signature: Chunbo Yang Date: 08.12.2015

Supervisor signature: Linda Lako

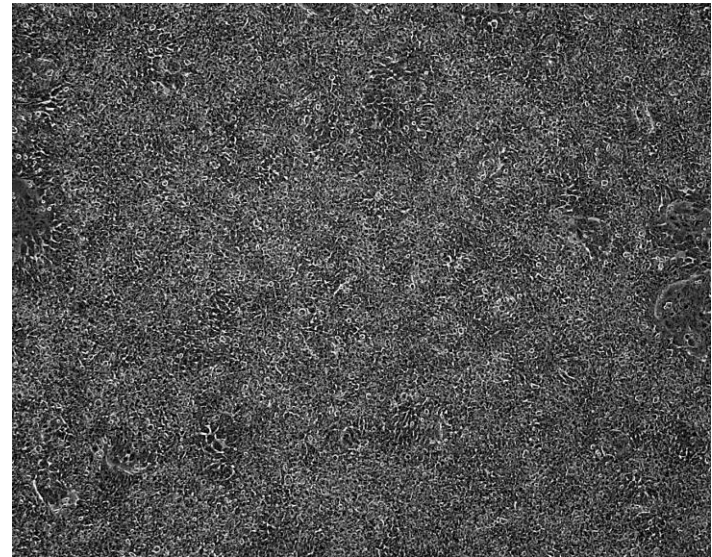
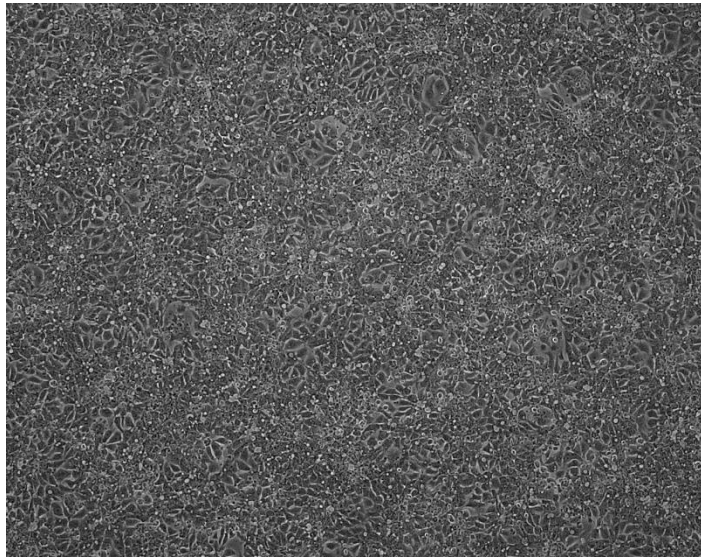
Date:17.12.2015

# Source of fibroblasts and reprogramming information

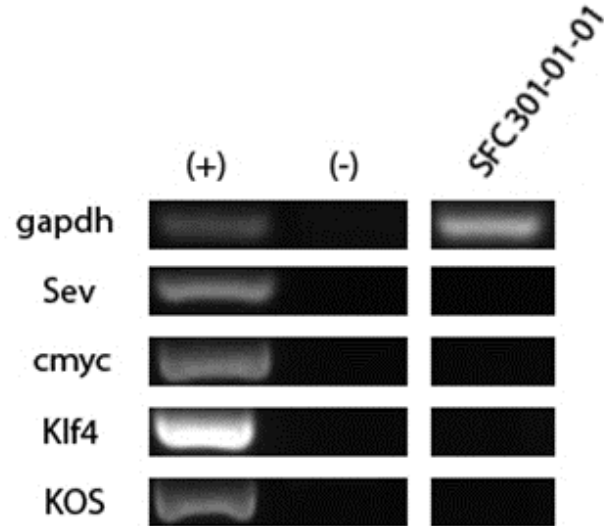
- SF301 from University of Cambridge
- Reprogrammed at UNEW
- Reprogrammed on 26/09/2015 at passage 7
- Cytotune 2

# Viability post-thaw and Morphology according to SOP19 passage 9

- Cell count immediately post-thaw  $1.6 \times 10^6$
- Viability immediately post-thaw 88%
- Photo at 24h and 72h post-thaw:






Sendai clearance:  
according to WP3 SOP15  
undetectable at passage 9



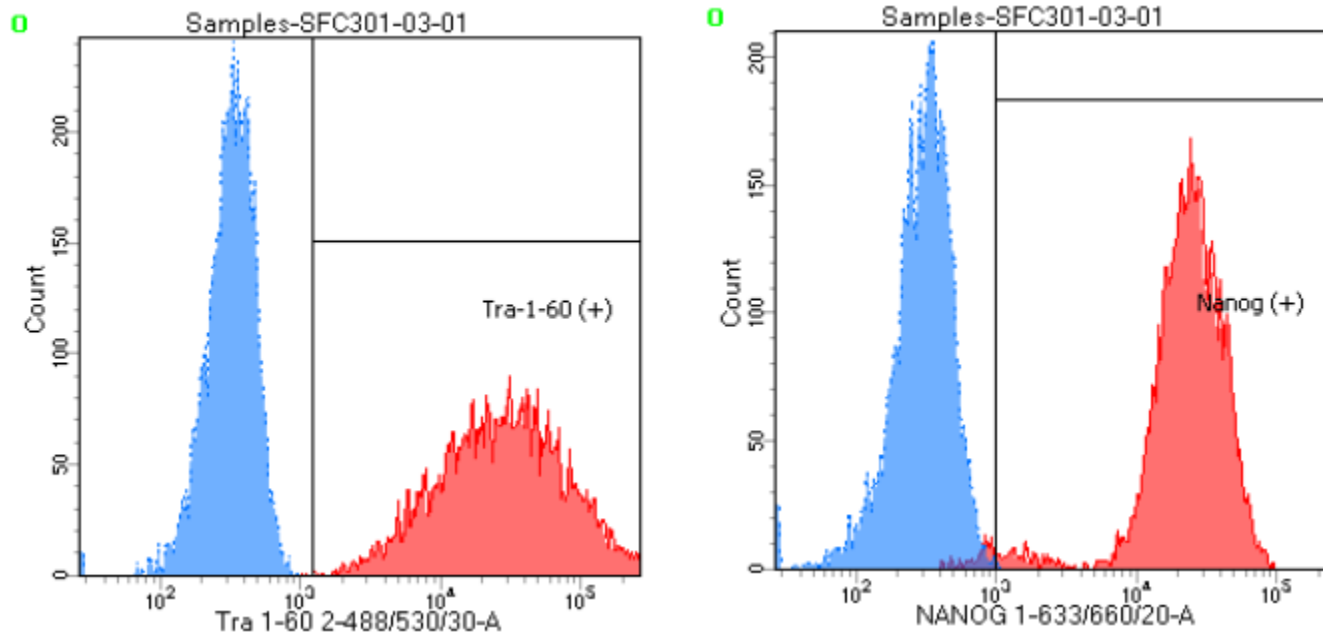
# Mycoplasma test:

## According to MycoAlert Lonza LT07-318

### Undetectable at passage 9

<b>Owner</b>	Cy				
<b>Date</b>	08/12/2015				
<b>Cell name</b>	SFC301				
<b>A</b>	0.0121				
<b>B</b>	0.0068				
<b>B/A</b>	0.561983471				
> 1.2		Mycoplasma Contaminated		Positive Control	Negative Control
0.9-1.2		Status Unknown - Retest within 24 hours		0.031	0.0439
0-0.9		Mycoplasma Free		1.434	0.0087
				46.25806452	0.198177677

# Flow cytometric analysis according to WP3 SOP 20 and 21 passage 8



Tube: SFC301-03-01

Population	#Events	%Parent	%Total
■ All Events	20,000	####	100.0
■ Cells	5,604	28.0	28.0
☒ Tra-1-60 (+)	5,590	99.8	28.0
☒ Nanog (+)	5,459	97.4	27.3
■ Samples/301/All Events	20,000	####	100.0
■ Samples/301/P1	5,752	28.8	28.8

# SNP analysis

according to WP3 SOP Preparation of DNA and RNA samples for Illumina arrays

- Identity to parent fibroblasts confirmed
- Karyotype abnormalities: Major Chr1 deletion, minor Chr6 deletion, both found in fibroblasts as well
- For details and raw data see StemDB
- Audited – 24.07.17