



Certificate of analysis

SFC866-03-06

Operator: Jane Vowles

Date: 08/09/2015

Supervisor: Sally Cowley

Date: 01.03.2016

Signature:

SACowley

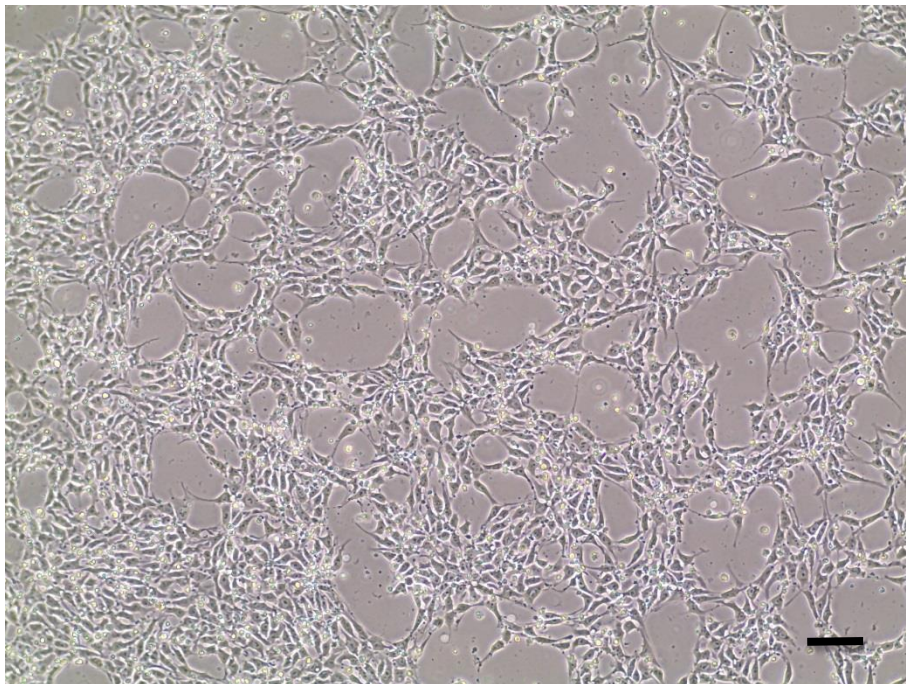
Source of fibroblasts and reprogramming information

- SF866 from UOXF
- Reprogrammed at UOXF JMSCF
- Reprogrammed on 02/10/2014 at passage 4
- Cytotune v2 WP3 SOP10

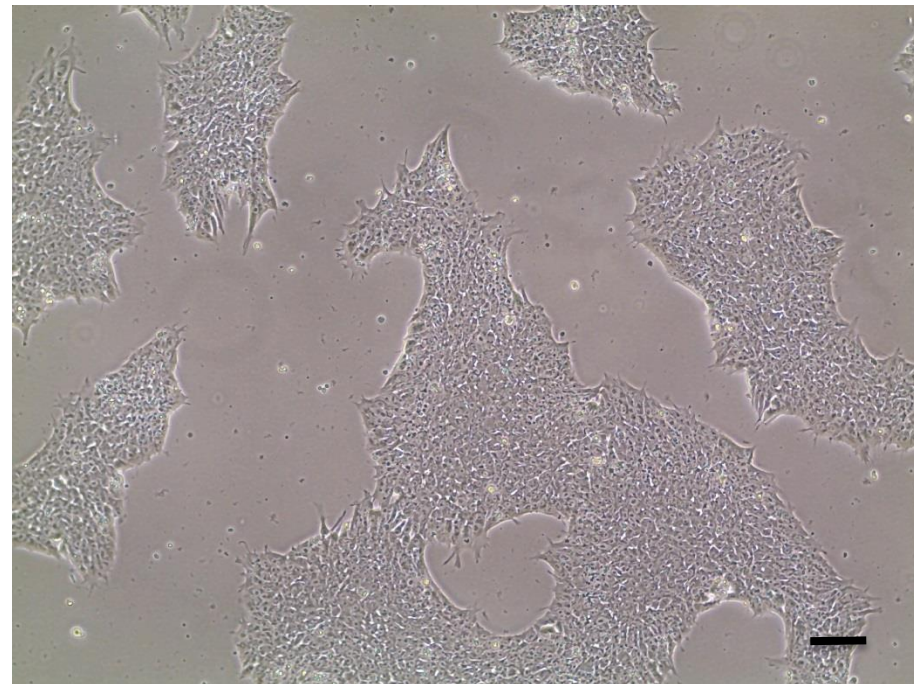
Viability post-thaw and Morphology according to SOP19 passage 16

- Cell count immediately post-thaw 2.3×10^6
- Viability immediately post-thaw 87%
- Photo post-thaw (scale bar = $100\mu\text{m}$):

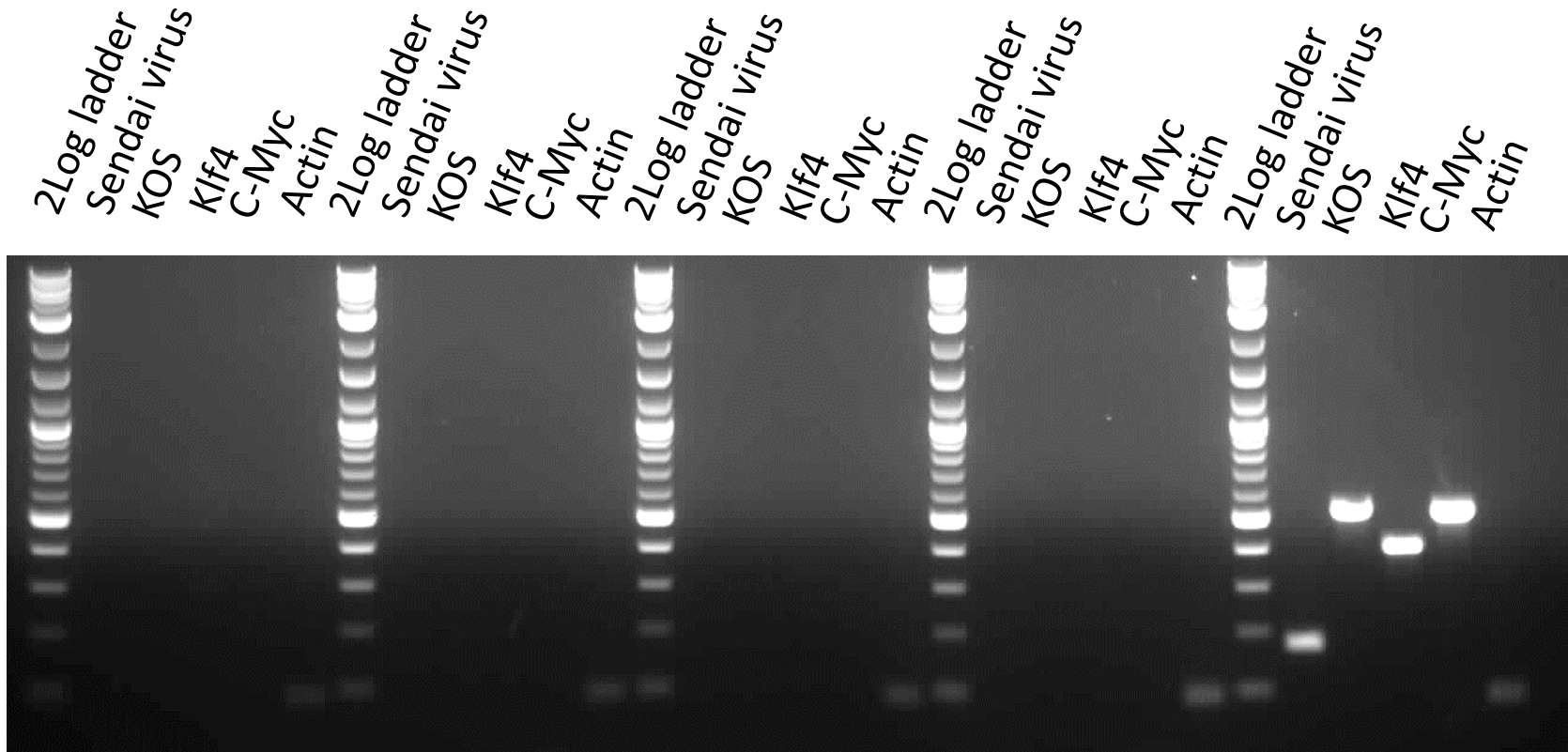
24 hour



Low density plating day 4



Sendai clearance: according to WP3 SOP15 undetectable at passage 16



SFC866-03-02

SFC866-03-06

SFC870-03-06

SFC870-03-08

+ control

Product sizes: SeV 181bp; KOS 528bp; SeV-Klf 410bp; SeV-Myc 532bp; Actin 92bp

Mycoplasma Test:

According to MycoAlert Lonza LT07-318 undetectable at passage 16

| Sample | Clone | Passage number | Initial | Reading 1 | Reading 2 | Ratio/Status |
|-------------|--------------|----------------|---------|-----------|-----------|--------------|
| +ve control | | | | 7.64 | 199.10 | 26.07 |
| -ve control | | | | 9.31 | 0.60 | 0.06 |
| 16 | SFC866-03-06 | p16 | JV | 5.25 | 2.26 | 0.43 |

Results mean

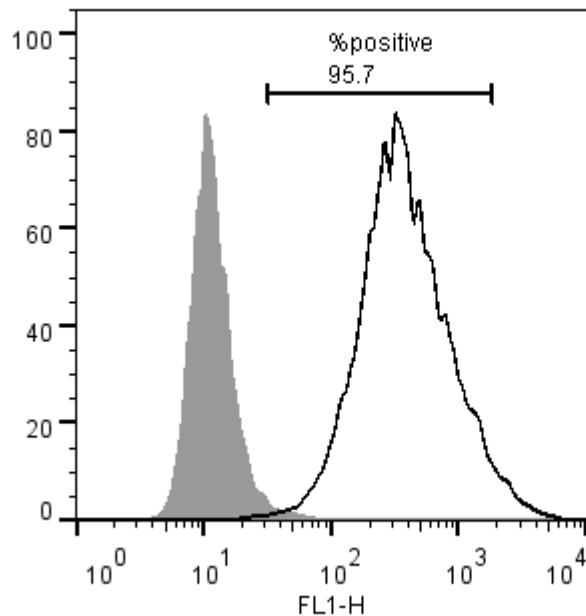
Ratio **0 - 0.999** negative for mycoplasma

Ratio **1 – 1.3** Borderline Result (retest required)

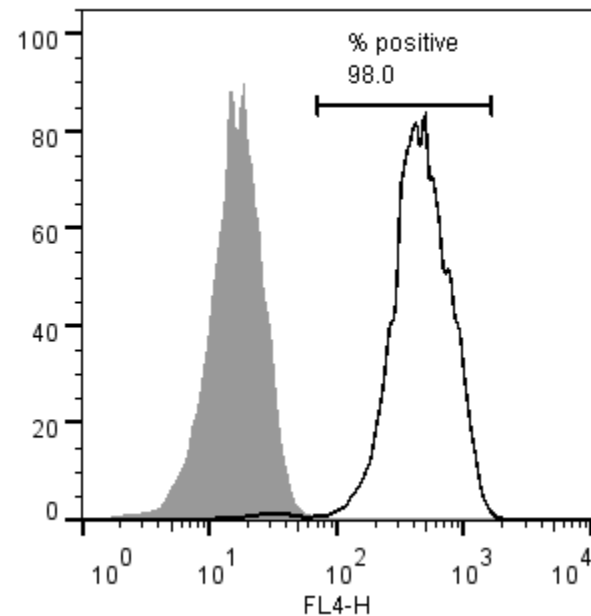
Ratio above **1.3** positive for mycoplasma

Flow cytometric analysis according to WP3 SOP 20 and 21 passage p16

Tra-1-60:



NANOG:



SNP analysis

according to WP3 SOP Preparation of DNA and RNA samples for Illumina arrays

- Passage 16
- Identity to parent fibroblasts confirmed
- Karyotype abnormalities: none detected
- For details and raw data see StemDB