

# Certificate of analysis

SFC247-03-01

# Viability post-thaw and Morphology according to SOP19 passage 10

- Cell count immediately post-thaw : 1M
- Viability immediately post-thaw: 80%

Photo at 48h post-thaw:

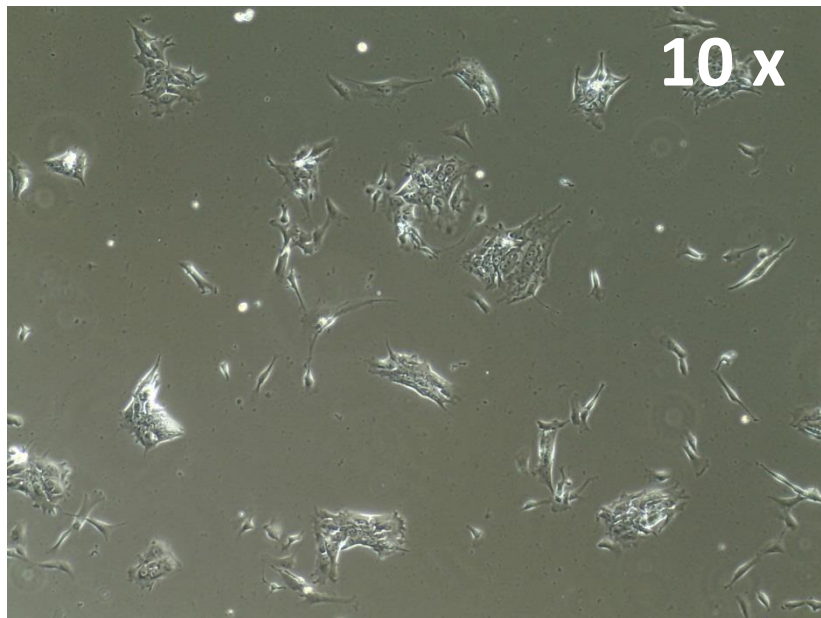
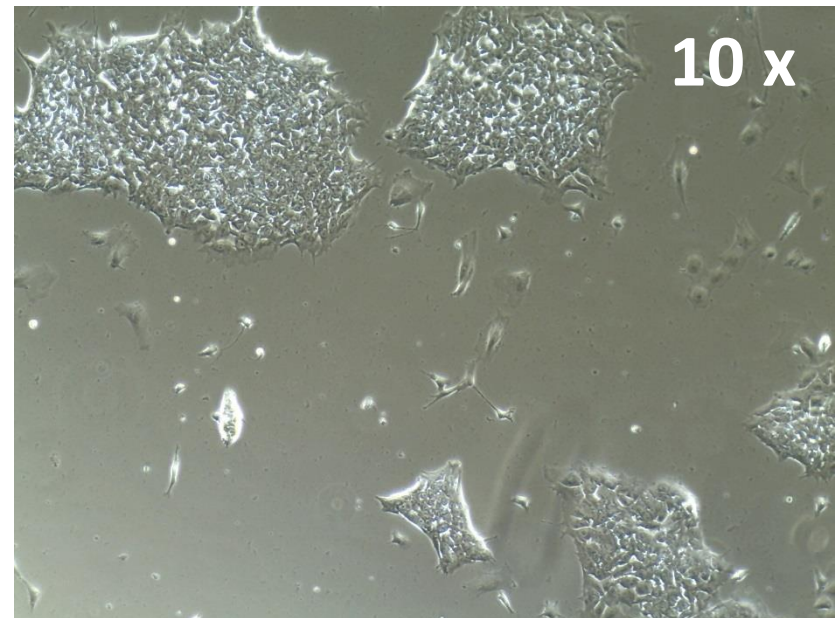


Photo at day 5 post-thaw:



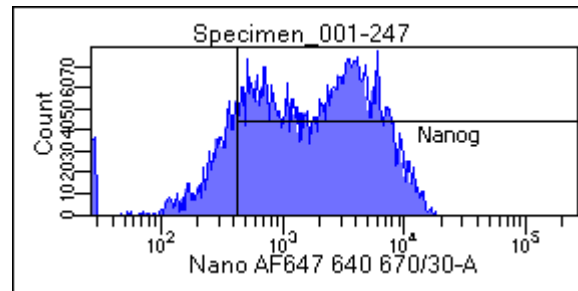
Sendai clearance  
according to WP3 SOP15:  
undetectable at passage 10

Mycoplasma test  
According to MycoAlert Lonza LT07-318:  
Undetectable at passage 10

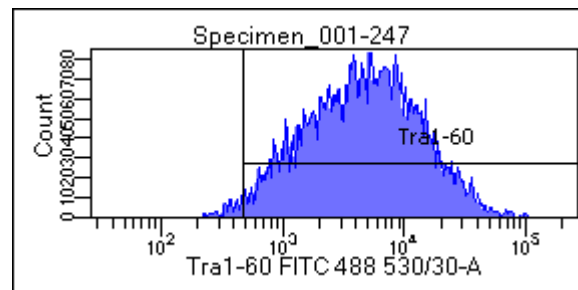
					<b>Date</b>	21/11/2017
> 1.2	<b>Mycoplasma Contaminated</b>		Positive Control	Negative Control	<b>Cell name</b>	SFC247-03-01
0.9-1.2	Status Unknown - Retest within 24 hours		2069	3338	<b>A</b>	1960
0-0.9	<b>Mycoplasma Free</b>		73060	602.4	<b>B</b>	809.8
			<b>35.3117448</b>	<b>0.180467346</b>	<b>B/A</b>	<b>0.413163265</b>

# Flow cytometric analysis according to WP3 SOP 20 and 21 passage 10

Nanog: 83.4%



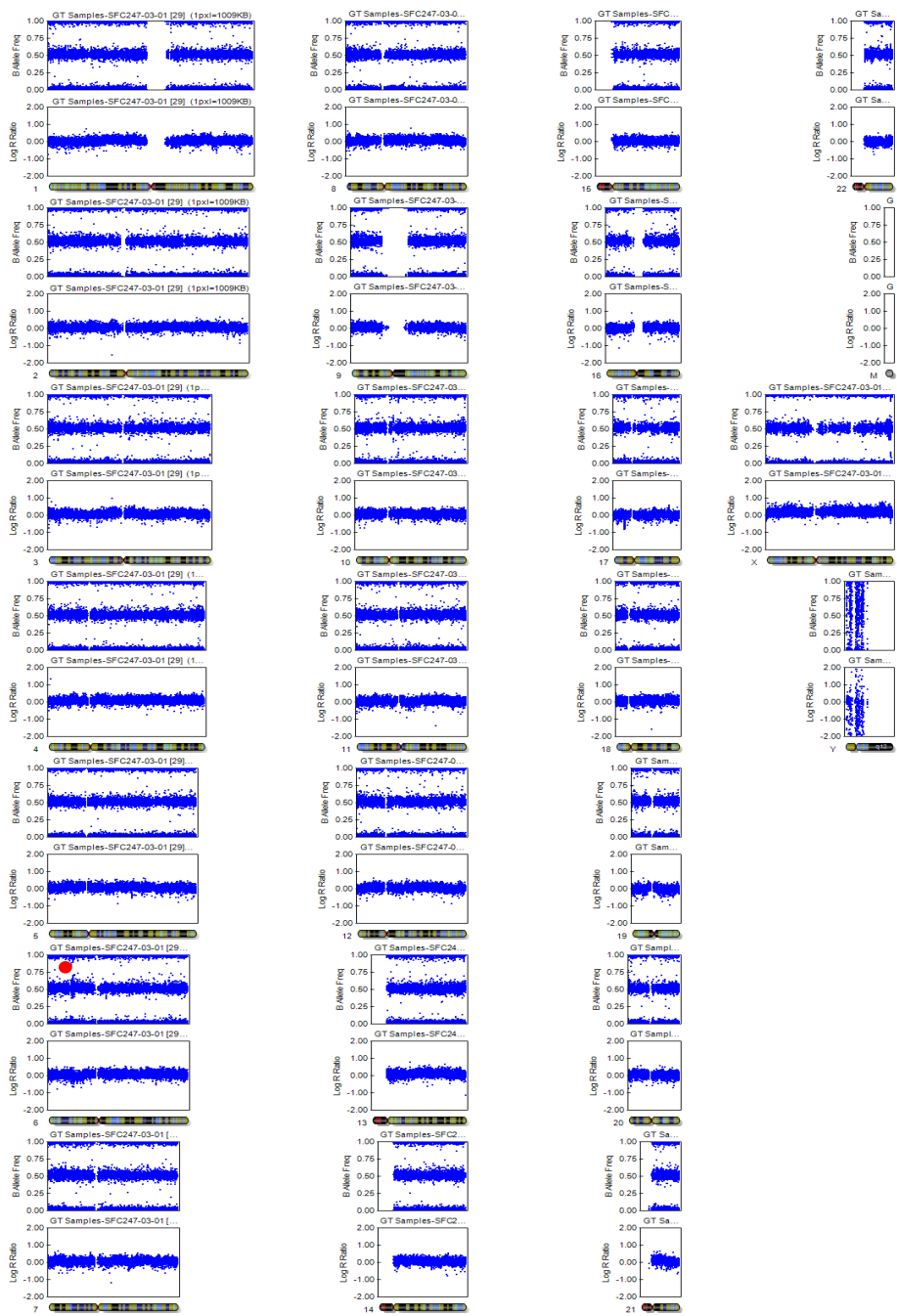
Tra1-60: 97.5%



# SNP analysis

according to WP3 SOP Preparation of DNA  
and RNA samples for Illumina arrays

- Passage 10



Red dot:  
Abnormality detected