



Certificate of analysis

SFC029-03-01

Operator: Jane Vowles Date: 03/03/15

Supervisor: Sally Cowley Date: 16.09.2015

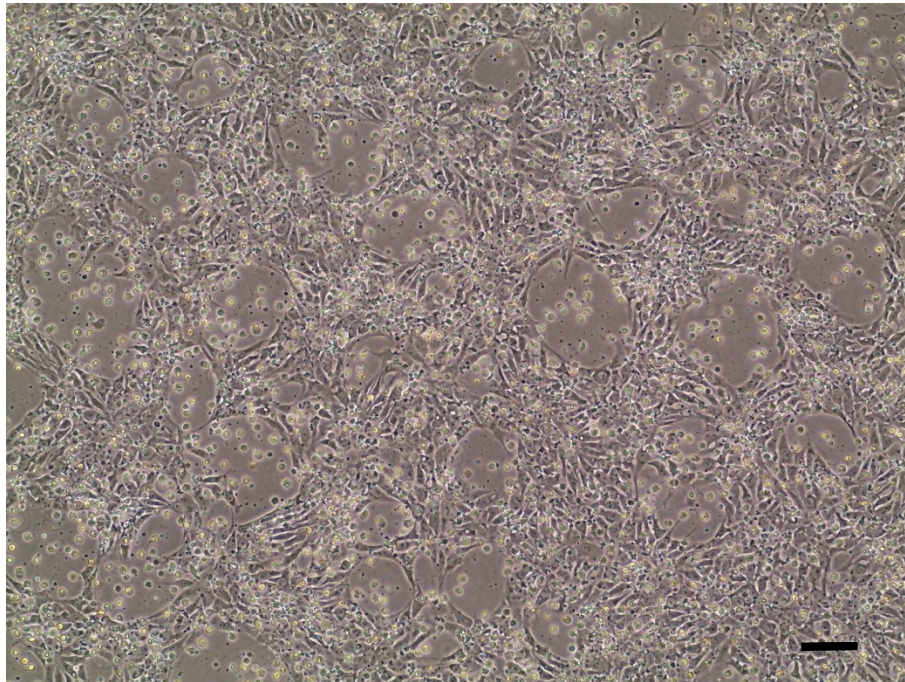
Signature: *SACowley*

Source of fibroblasts and reprogramming information

- SF029 from Luebeck
- Reprogrammed at UOXF JMSCF (JV)
- Reprogrammed on 05/06/14 at passage 3
- Cytotune v1 WP3 SOP10

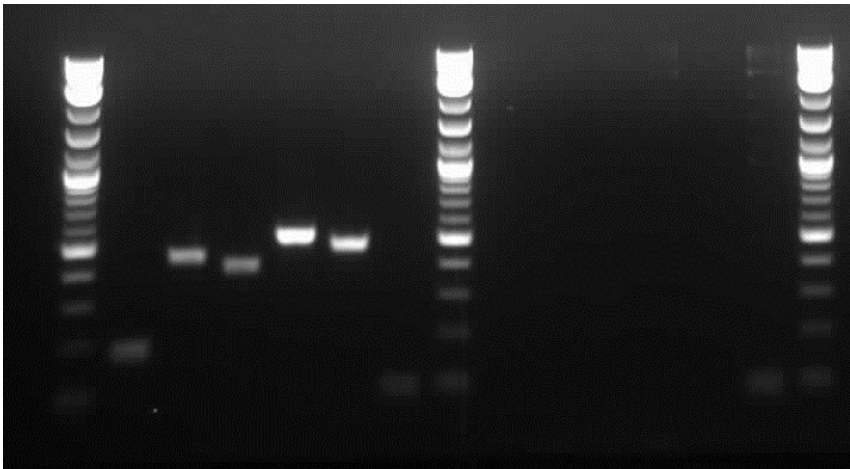
Viability post-thaw and Morphology according to SOP19 passage 23

- Cell count immediately post-thaw 4.47×10^6
- Viability immediately post-thaw 83.45%
- Photo at 24h post-thaw (scale bar = $100\mu\text{m}$):



Sendai clearance: according to WP3 SOP15 undetectable at passage 23

2Log ladder
Sendai virus
Sox2
Klf4
C-Myc
Oct3/4
Actin
Log2 ladder
Sendai virus
Sox2
Klf4
C-Myc
Oct3/4
Actin
2Log ladder



+ control

SFC029-03-01

Product sizes: SeV 181bp; SeV-Sox 451bp; SeV-Klf 410bp; SeV-Myc 532bp; SeV-Oct 483bp; Actin 92bp

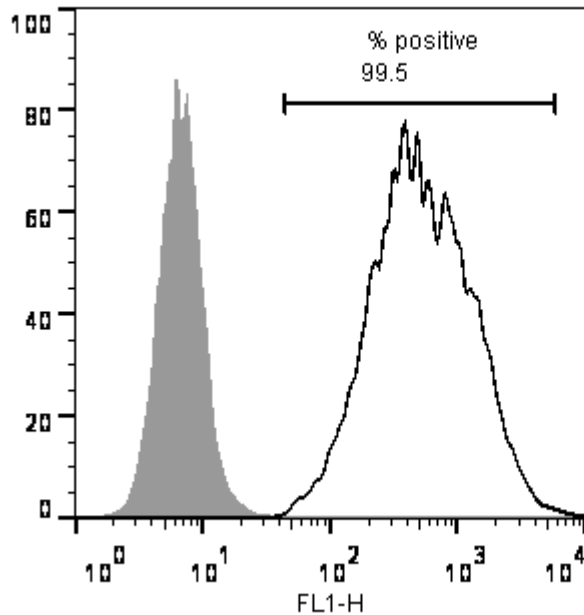
Mycoplasma Test:

According to MycoAlert Lonza LT07-318 undetectable at passage p23

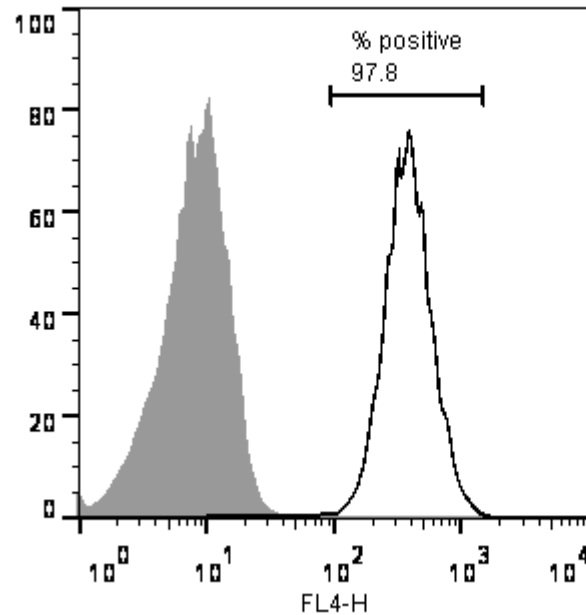
Sample	Clone	Passage number	Initial	Reading 1	Reading 2	Ratio/Status
+ve control				5.084	148.1	29.13
-ve control				4.485	0.531	0.12
1	SFC029-03-01	p17+6	CB	1.211	0.701	0.58
Results mean						
Ratio 0 - 0.999 negative for mycoplasma						
Ratio 1 – 1.3 Borderline Result (retest required)						
Ratio above 1.3 positive for mycoplasma						

Flow cytometric analysis according to WP3 SOP 20 and 21 passage p23

Tra-1-60:



NANOG:



SNP analysis

according to WP3 SOP Preparation of DNA and RNA samples for Illumina arrays

- Passage 23
- Identity to parent fibroblasts confirmed
- Karyotype abnormalities: none detected
- For details and raw data see StemDB