

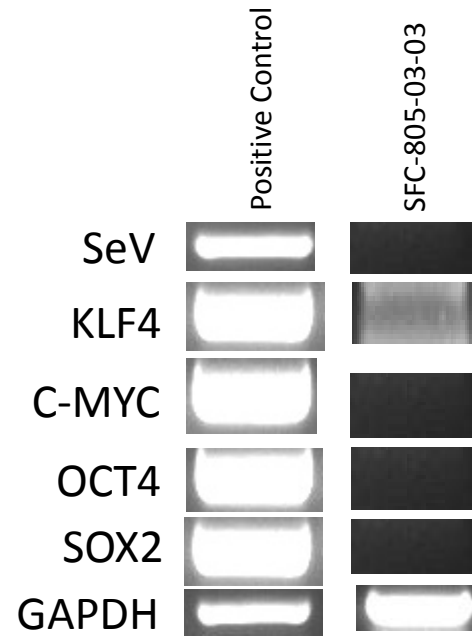
# Certificate of analysis

SFC-805-03-03

# Source of fibroblasts

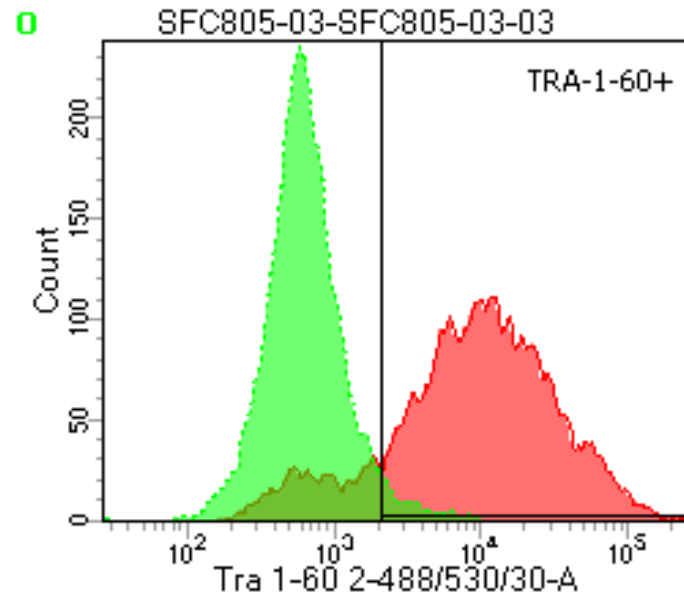
SF805 fibroblasts delivered from Oxford April 2013

# Sendai Clearance

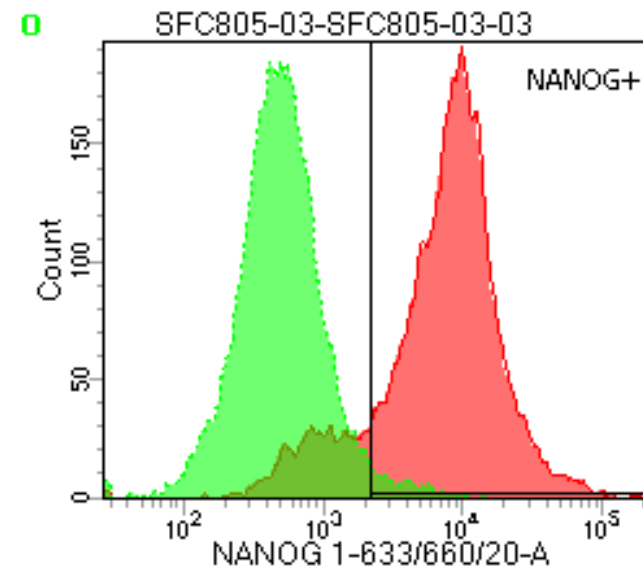


# Flow cytometric analysis

**TRA-1-60: 84.4%**



**NANOG: 84.1%**



# CytoSNP analysis

## **Identity to parent fibroblasts**

- Confirmed

## **Karyotype abnormalities**

- Pass: minor allelic imbalance Chr6 also present in parent fibroblasts

# Notes

- Frozen with EDTA
- Clone prone to differentiation if the well gets confluent
- Recommended for passage at day 4 of culture