

Certificate of analysis

Signature: Nuno Alcada

Supervisor Signature: Linda Lako

Date: 10.10.2014

SFC062-03-02

Source of fibroblasts and reprogramming information

- SF062 from Luebeck
- Reprogrammed at UNEW NA
- Reprogrammed on 15/05/2014 at passage 8
- Cytotune v2 WP3 SOP22

Viability post-thaw and Morphology according to SOP19 passage 14

- Cell count immediately post-thaw 1.23×10^6
- Viability immediately post-thaw 97%
- Photo at 24h post-thaw:

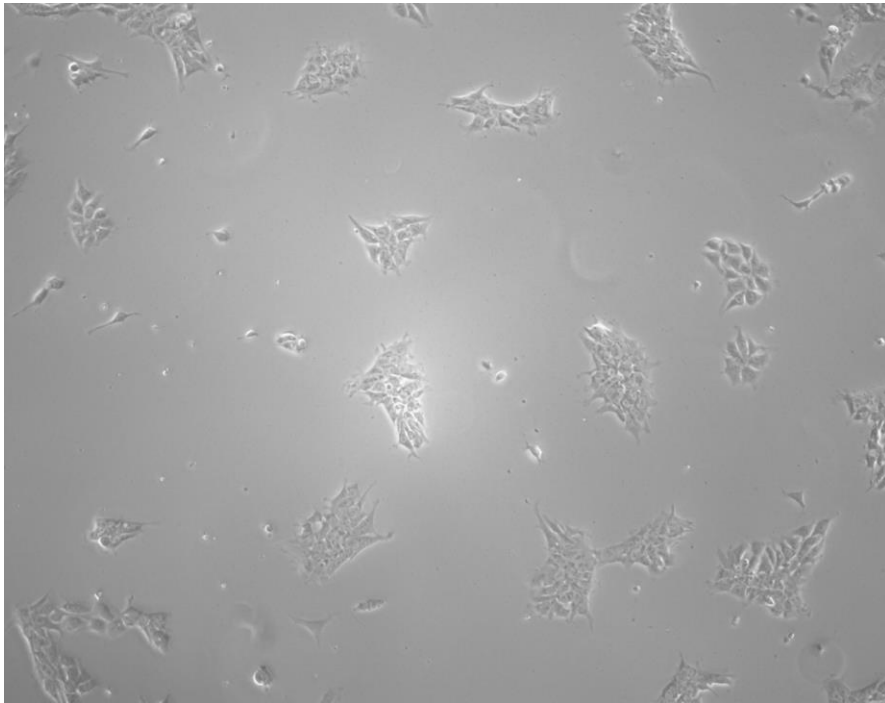
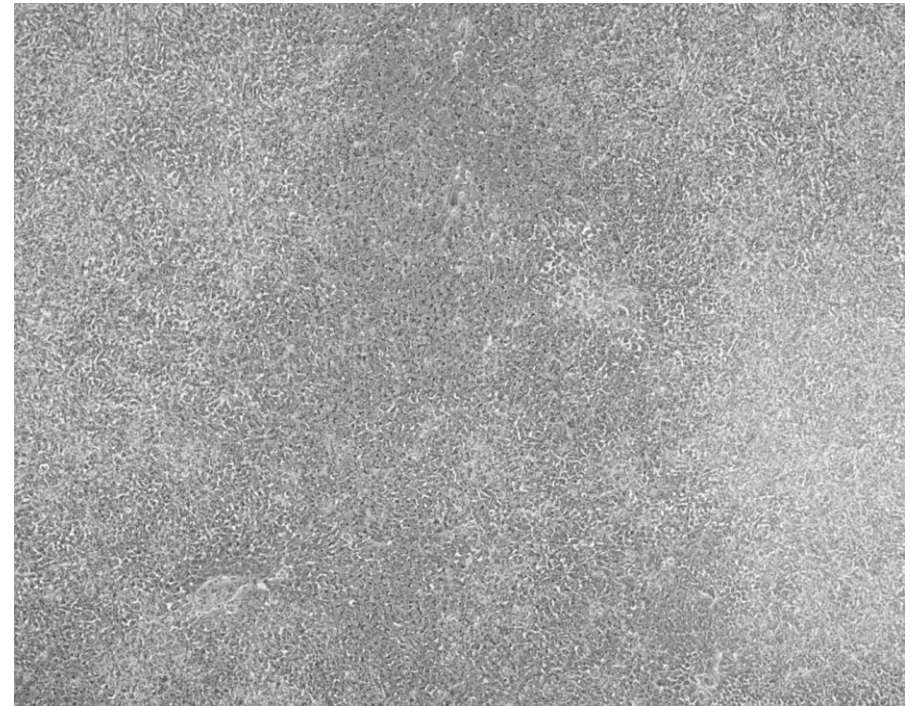
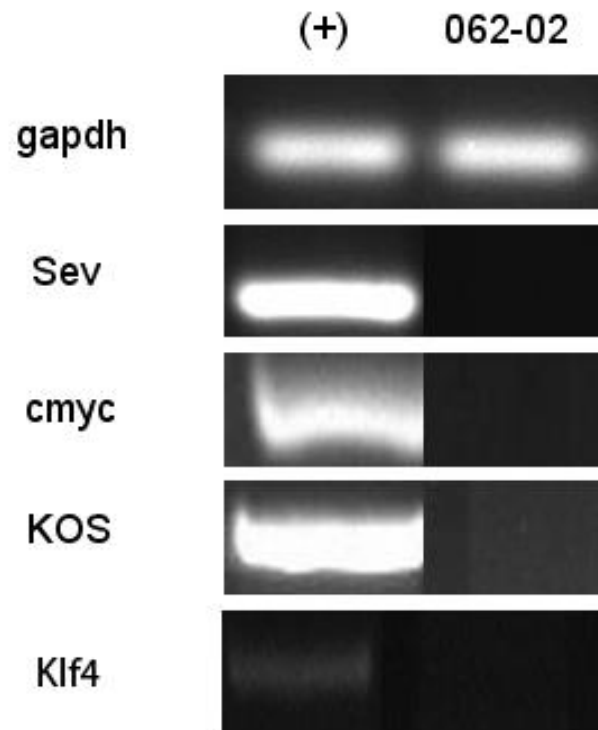


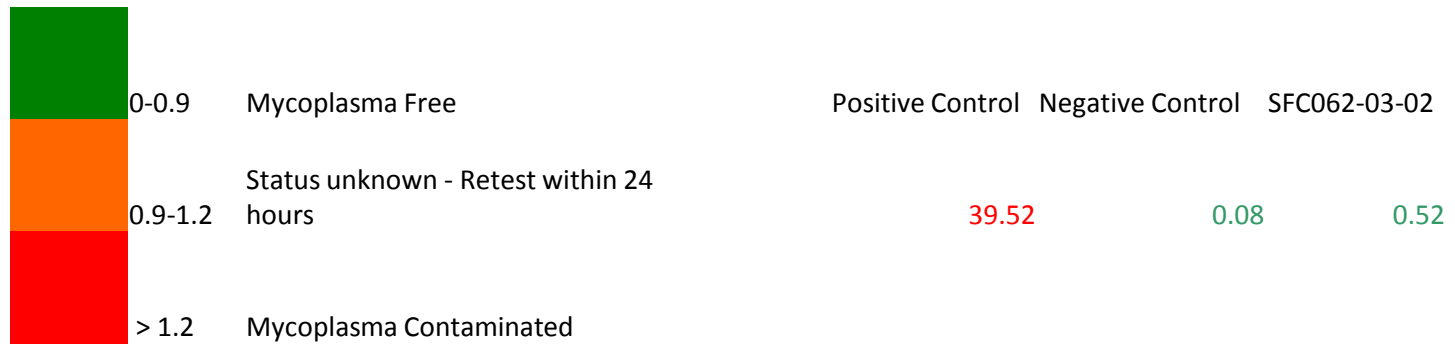
Photo at Confluence:



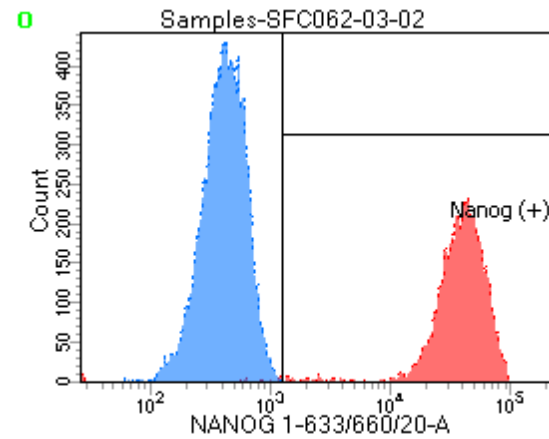
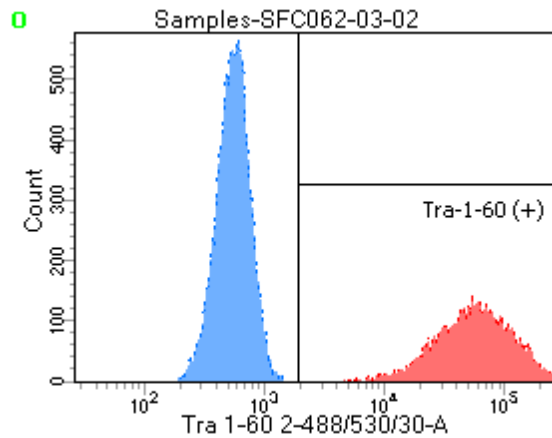
Sendai clearance: according to WP3 SOP15



Mycoplasma test: Undetectable at passage 14



Flow cytometric analysis according to WP3 SOP 20 and 21 passage 14



Tube: SFC062-03-02

Population	#Events	%Parent	%Total
■ All Events	20,000	####	100.0
■ Cells	6,784	33.9	33.9
☒ Tra-1-60 (+)	6,780	99.9	33.9
☒ Nanog (+)	6,641	97.9	33.2
■ Samples/KG uN/All Events	20,000	####	100.0
■ Samples/KG uN/P1	12,294	61.5	61.5

SNP analysis

according to WP3 SOP Preparation of DNA
and RNA samples for Illumina arrays

- Passage 14
- Identity to parent fibroblasts confirmed
- Karyotype abnormalities none
- For details and raw data see StemDB