



# Certificate of analysis

SFC249-03-06

Operator: C Browne

Date: 24/10/17

Supervisor: Sally Cowley

Date: 25/02/2018

Signature:

*SACowley*

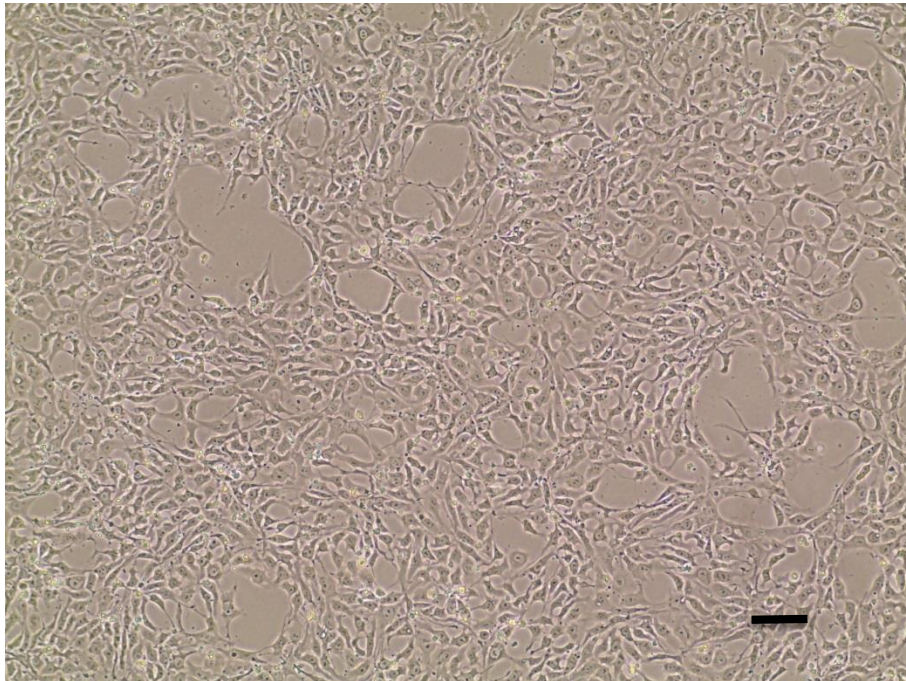
# Source of fibroblasts and reprogramming information

- SF246 from UOXF  
04/06/2015
- Reprogrammed at UOXF-S
- Reprogrammed on 12/05/2016 at passage 3  
OP
- Cytotune v2 WP3 SOP10

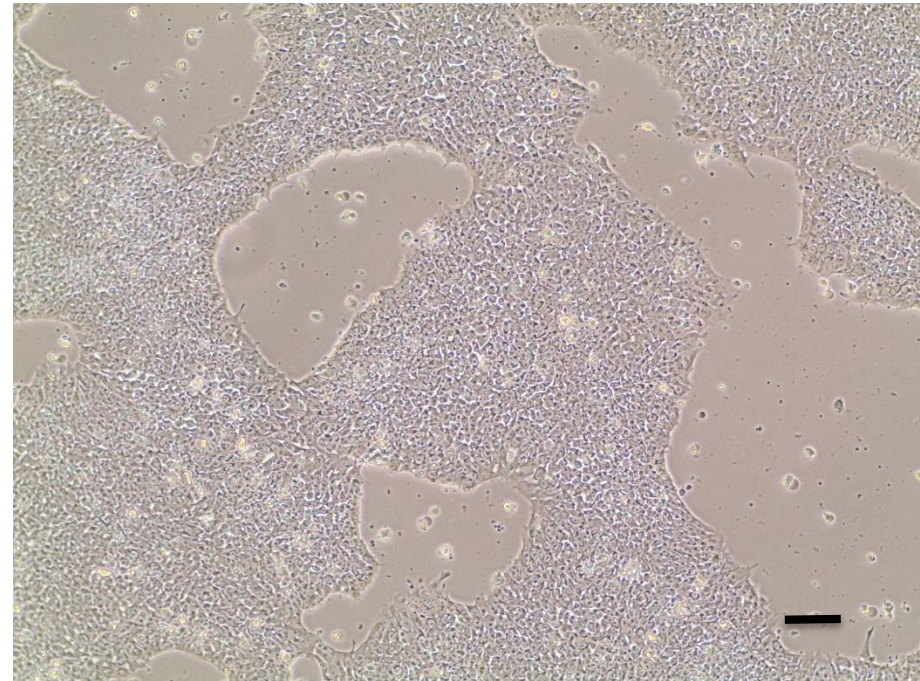
# Viability post-thaw and Morphology according to SOP19 passage 11

- Cell count immediately post-thaw  $2.75 \times 10^6$
- Viability immediately post-thaw 92.1%
- Photo at 24h and day 4 post-thaw (scale bar =  $100\mu\text{m}$ ):

24h post-thaw 80% plated

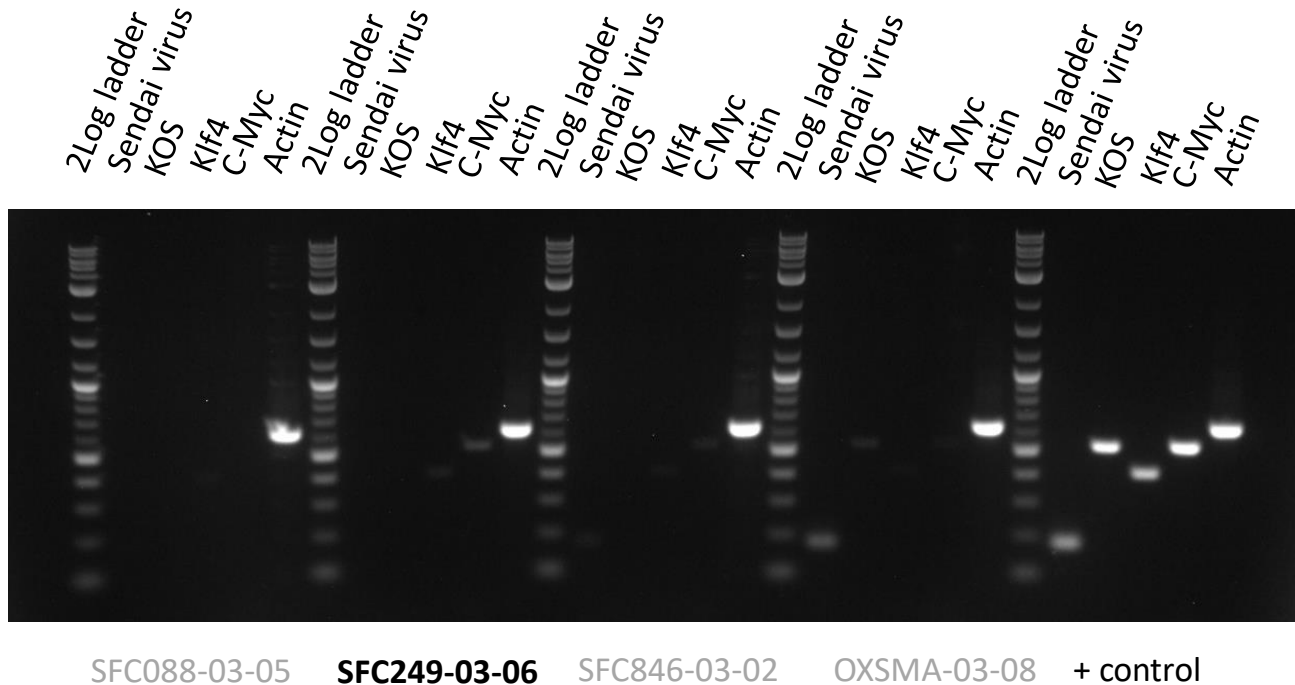


Day 4 post-thaw 20% plated



# Sendai Cytotune 2 clearance: according to WP3 SOP15

Low level of residual myc virus detected at passage 11  
– recommend passaging upon receipt and retesting at  
p14+



Product sizes: SeV 181bp; KOS 528bp; SeV-Klf 410bp; SeV-Myc 532bp; Actin 623bp

# Mycoplasma Test:

## According to MycoAlert Lonza LT07-318 undetectable at passage 11

Sample	Clone	Passage number	Initial	Reading 1	Reading 2	Ratio/Status
+ve control				2.857	78.45	27.46
-ve control				3.453	0.336	0.10
7	SFC249-03-06	p11	CB	1.14	0.87	0.76

Results mean

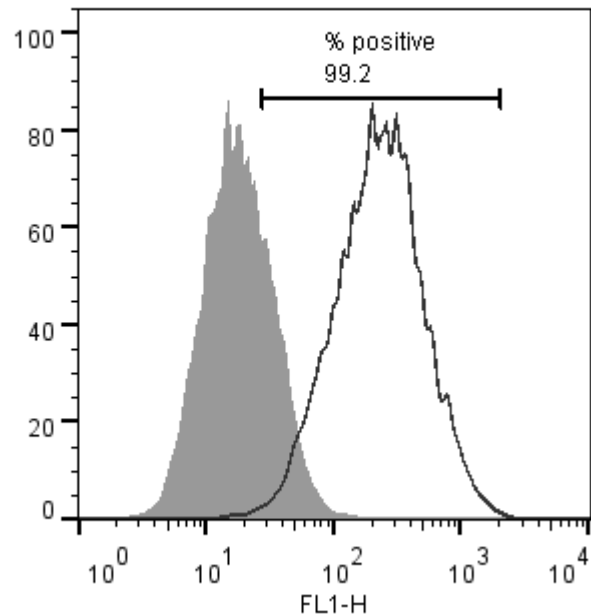
Ratio **0 - 0.999** negative for mycoplasma

Ratio **1 – 1.3** Borderline Result (retest required)

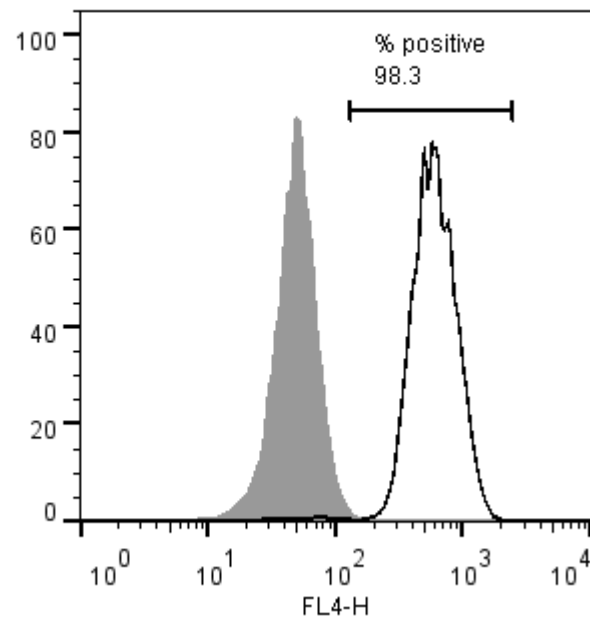
Ratio above **1.3** positive for mycoplasma

# Flow cytometric analysis according to WP3 SOP 20 and 21 passage 11

Tra-1-60:



NANOG:



# SNP analysis

according to WP3 SOP Preparation of DNA and RNA samples for Illumina arrays

- Passage 11
- Identity to parent fibroblasts confirmed by Genomestudio Scatterplot
- No gross karyotype abnormalities detected by Karyostudio

SF249 [832] X Raw vs SFC249-03-06 [917] X Raw

