

Certificate of analysis

SFC161-03-01

Viability post-thaw and Morphology according to SOP19 passage 10

- Cell count immediately post-thaw: 1.4M
- Viability immediately post-thaw: 84%

Photo at 24h post-thaw:

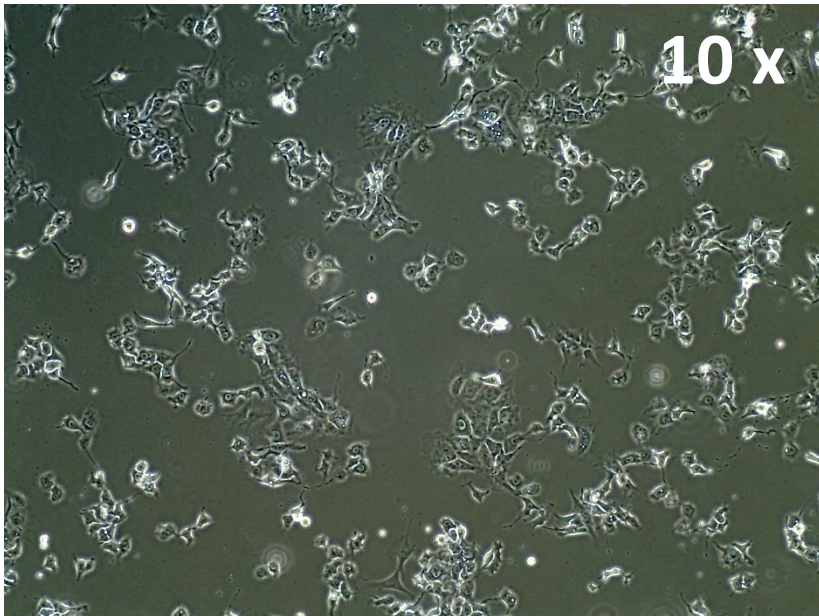
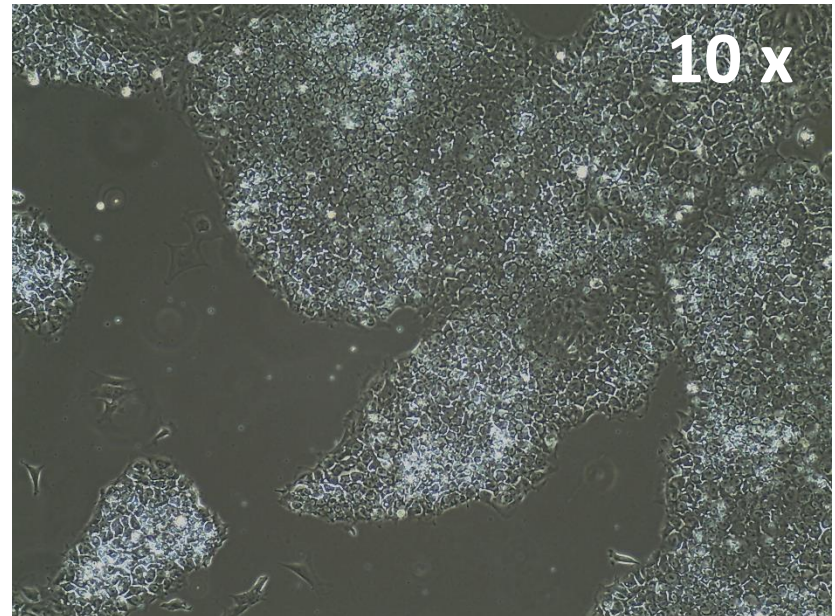


Photo at day 5 post-thaw:



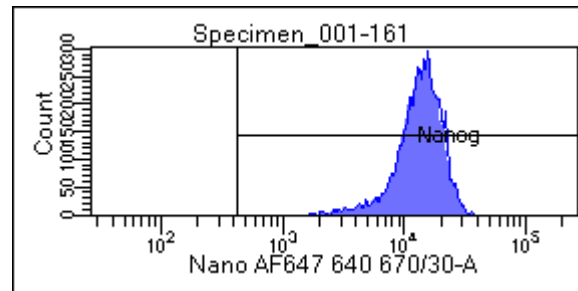
Sendai clearance
according to WP3 SOP15:
undetectable at passage 10

Mycoplasma test
According to MycoAlert Lonza LT07-318:
Undetectable at passage 10

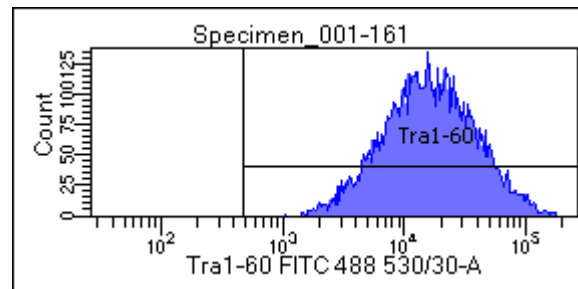
					Date	14/03/2018
> 1.2	Mycoplasma Contaminated	Positive Control	Negative Control		Cell name	SFC161
0.9-1.2	Status Unknown - Retest within 24 hours	2069	3338		A	911.3
0-0.9	Mycoplasma Free	73060	602.4		B	349.4
		35.3117448	0.180467346		B/A	0.383408318

Flow cytometric analysis according to WP3 SOP 20 and 21 passage 10

Nanog: 99.9%



Tra-1-60: 99.9%



SNP analysis

according to WP3 SOP Preparation of DNA
and RNA samples for Illumina arrays

- Passage 10
- Karyotype abnormalities to be confirmed