



Certificate of analysis

SFC872-03-05

Operator: Jane Vowles

Date: 11/12/2015

Supervisor: Sally Cowley

Date: 01.03.2016

Signature:

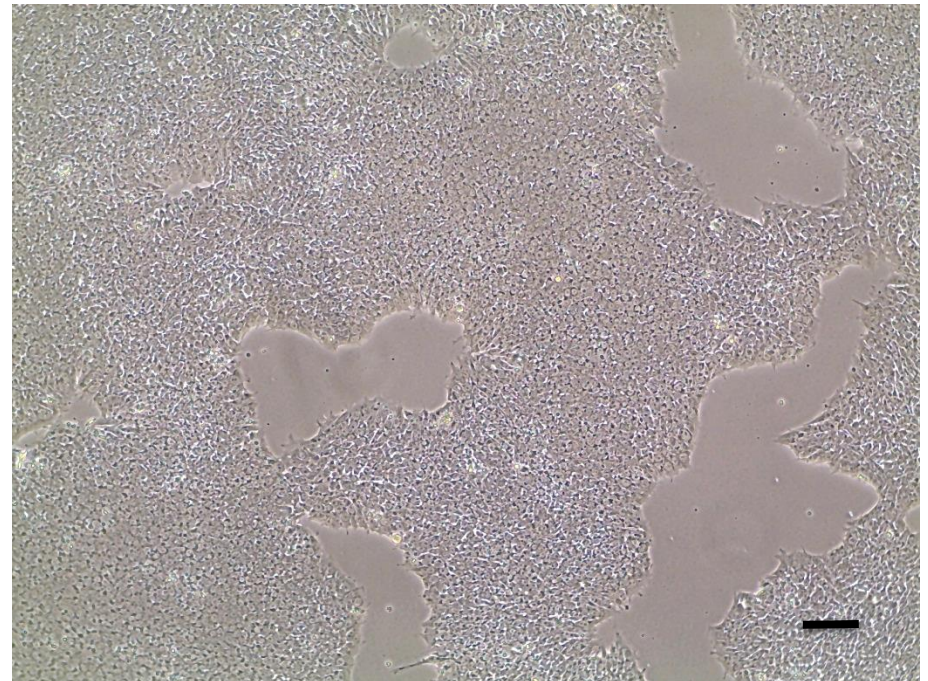
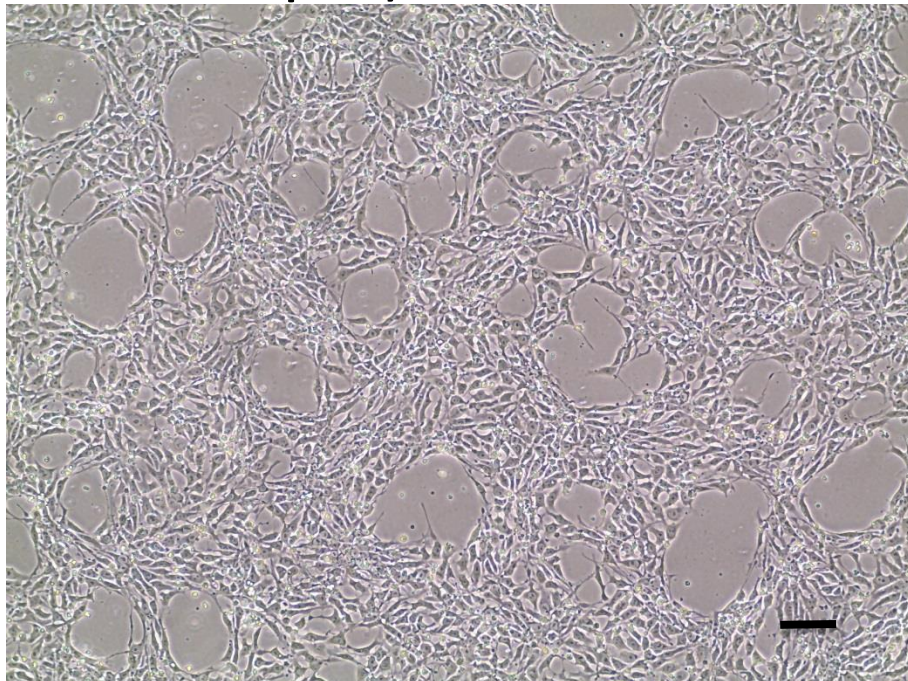
SACowley

Source of fibroblasts and reprogramming information

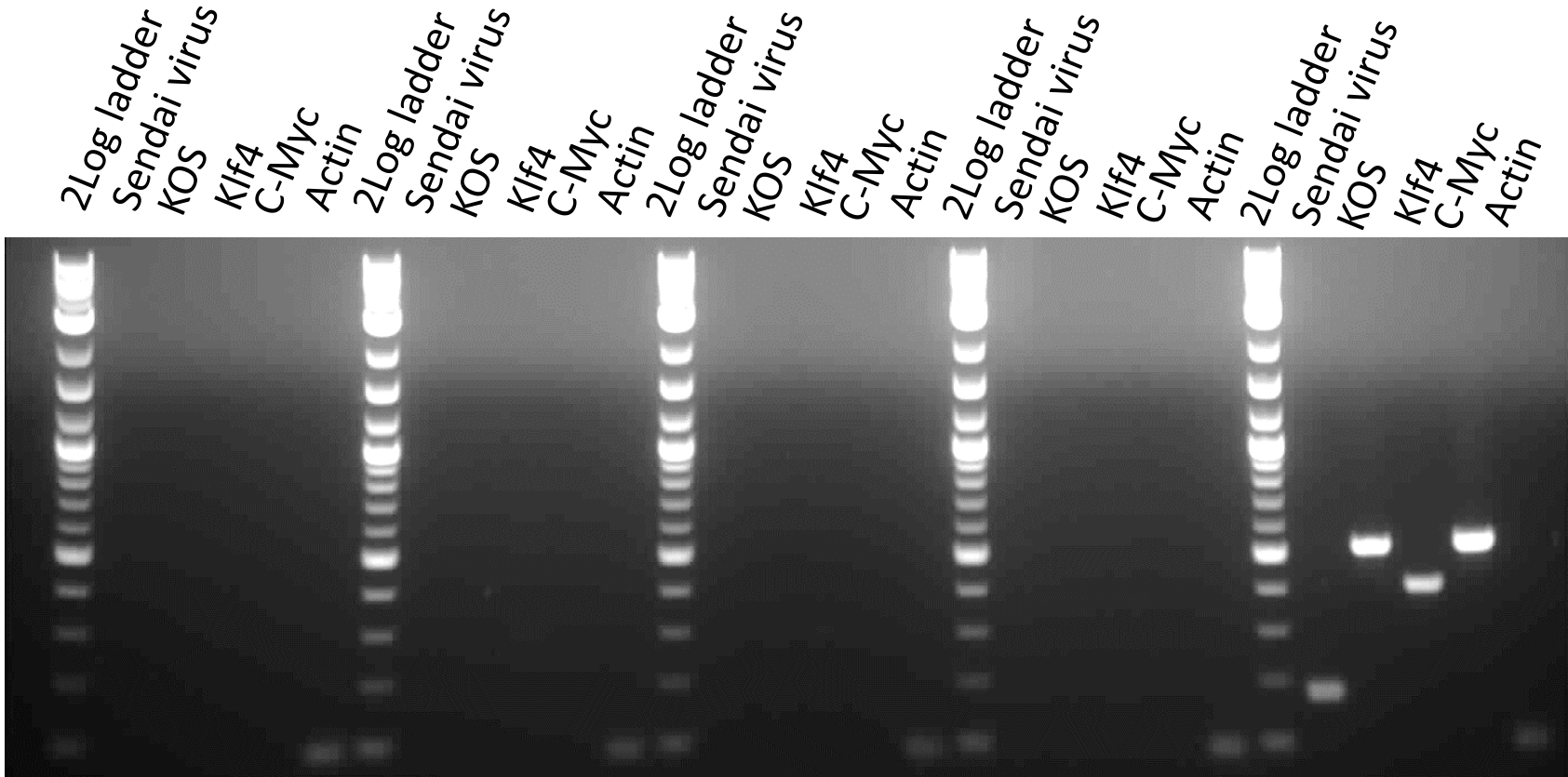
- SF872 from Oxford University Hospitals
- Reprogrammed at UOXF JMSCF
- Reprogrammed on 28/05/2015 at passage 4
- Cytotune v2 WP3 SOP10

Viability post-thaw and Morphology according to SOP19 passage 13

- Cell count immediately post-thaw 3.3×10^6
- Viability immediately post-thaw 90%
- Photo at 24h and day 4 post-thaw (scale bar = $100\mu\text{m}$):



Sendai clearance: according to WP3 SOP15 undetectable at passage 13



SFC870-03-05

SFC872-03-05

SFC872-03-02

SFC872-03-03

+ control

Product sizes: SeV 181bp; KOS 528bp; SeV-Klf 410bp; SeV-Myc 532bp; Actin 92bp

Mycoplasma Test:

According to MycoAlert Lonza LT07-318 undetectable at passage 13

Sample	Clone	Passage number	Initial	Reading 1	Reading 2	Ratio/Status
+ve control				8.20	284.00	34.65
-ve control				8.28	0.93	0.11
6	SFC872-03-05	p13	JV	0.97	0.90	0.93

Results mean

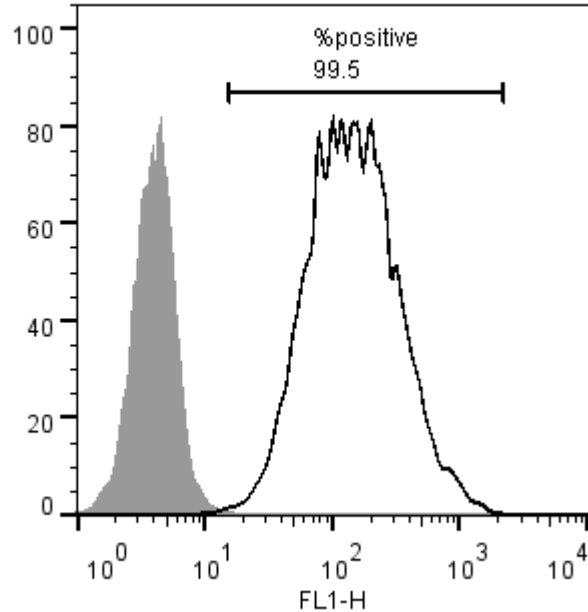
Ratio **0 - 0.999** negative for mycoplasma

Ratio **1 – 1.3** Borderline Result (retest required)

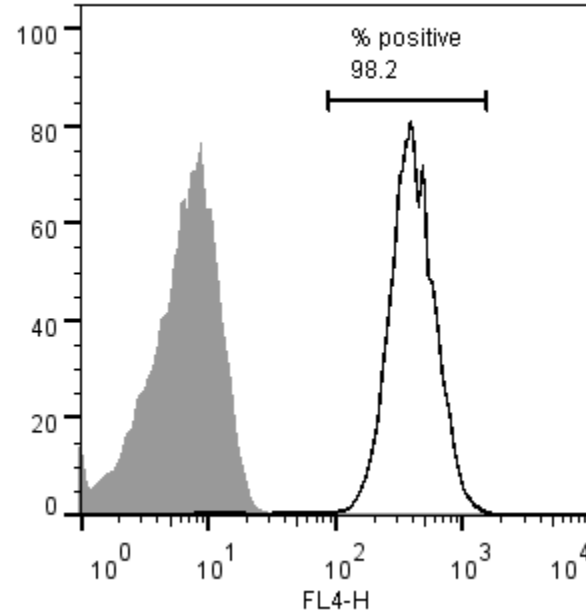
Ratio above **1.3** positive for mycoplasma

Flow cytometric analysis according to WP3 SOP 20 and 21 passage p13

Tra-1-60:



NANOG:



SNP analysis

according to WP3 SOP Preparation of DNA
and RNA samples for Illumina arrays

- Passage 13
- Identity to parent fibroblasts confirmed
- Karyotype abnormalities: none detected
- For details and raw data see StemDB