

Certificate of analysis

SFC194-03-01

Viability post-thaw and Morphology according to SOP19 passage 10

- Cell count immediately post-thaw: 1,5M
- Viability immediately post-thaw: 79%

Photo at 48h post-thaw:

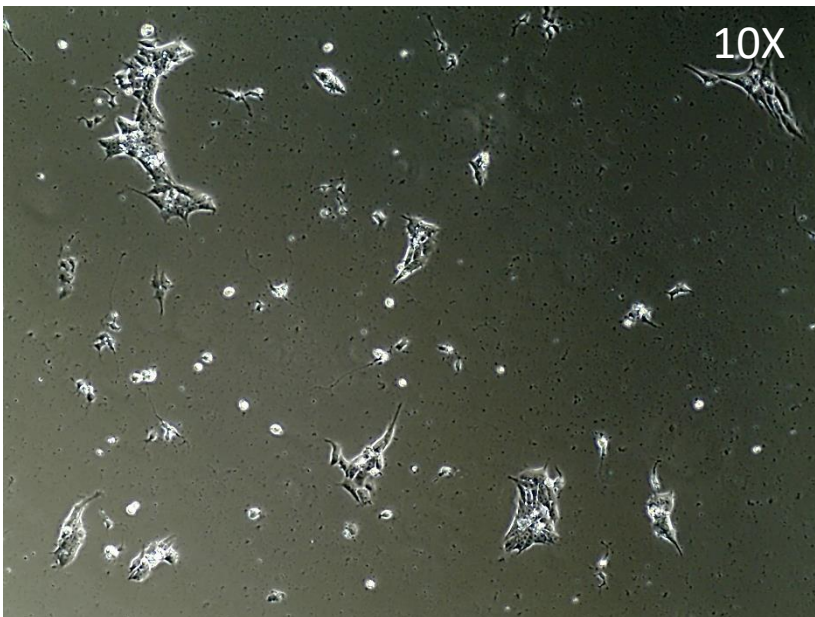
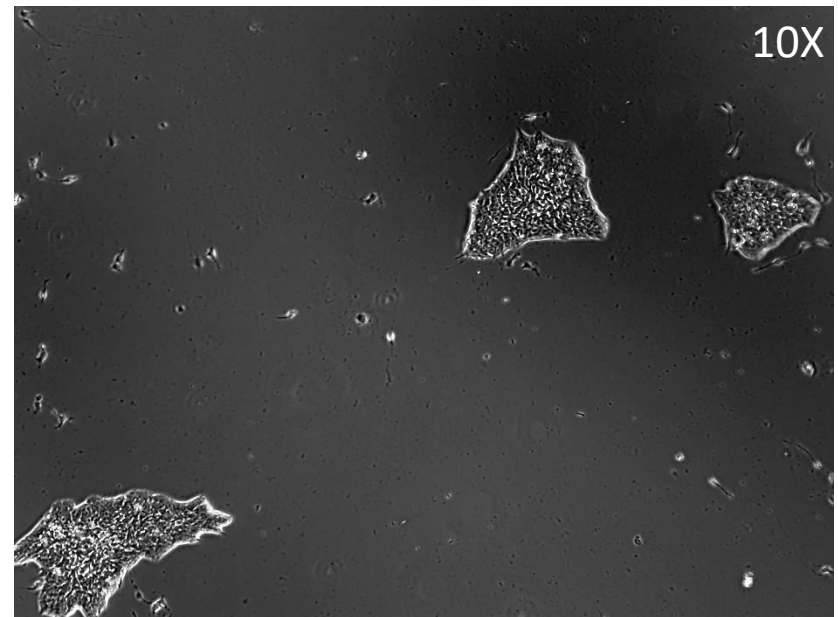


Photo at day 5 post-thaw:



Sendai clearance
according to WP3 SOP15:
undetectable at passage 10

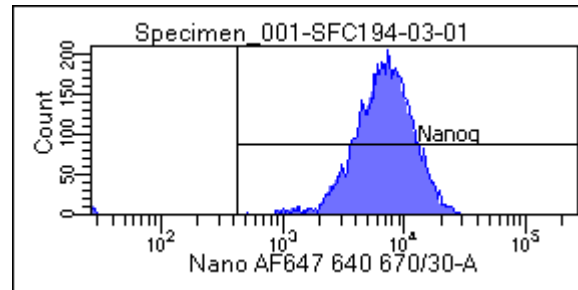
Mycoplasma test
According to MycoAlert Lonza LT07-318:
Undetectable at passage 10

> 1.2	Mycoplasma Contaminated		Positive Control	Negative Control
0.9-1.2	Status Unknown - Retest within 24 hours		2069	3338
0-0.9	Mycoplasma Free		73060	602.4
			35.3117448	0.180467346

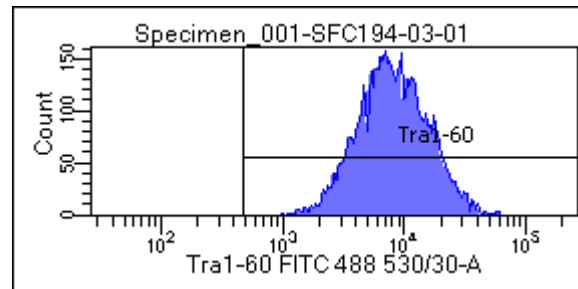
Date	21/02/2018
Cell name	SFC194
A	558.1
B	304.5
B/A	0.545601147

Flow cytometric analysis according to WP3 SOP 20 and 21 passage 10

Nanog: 99.6%



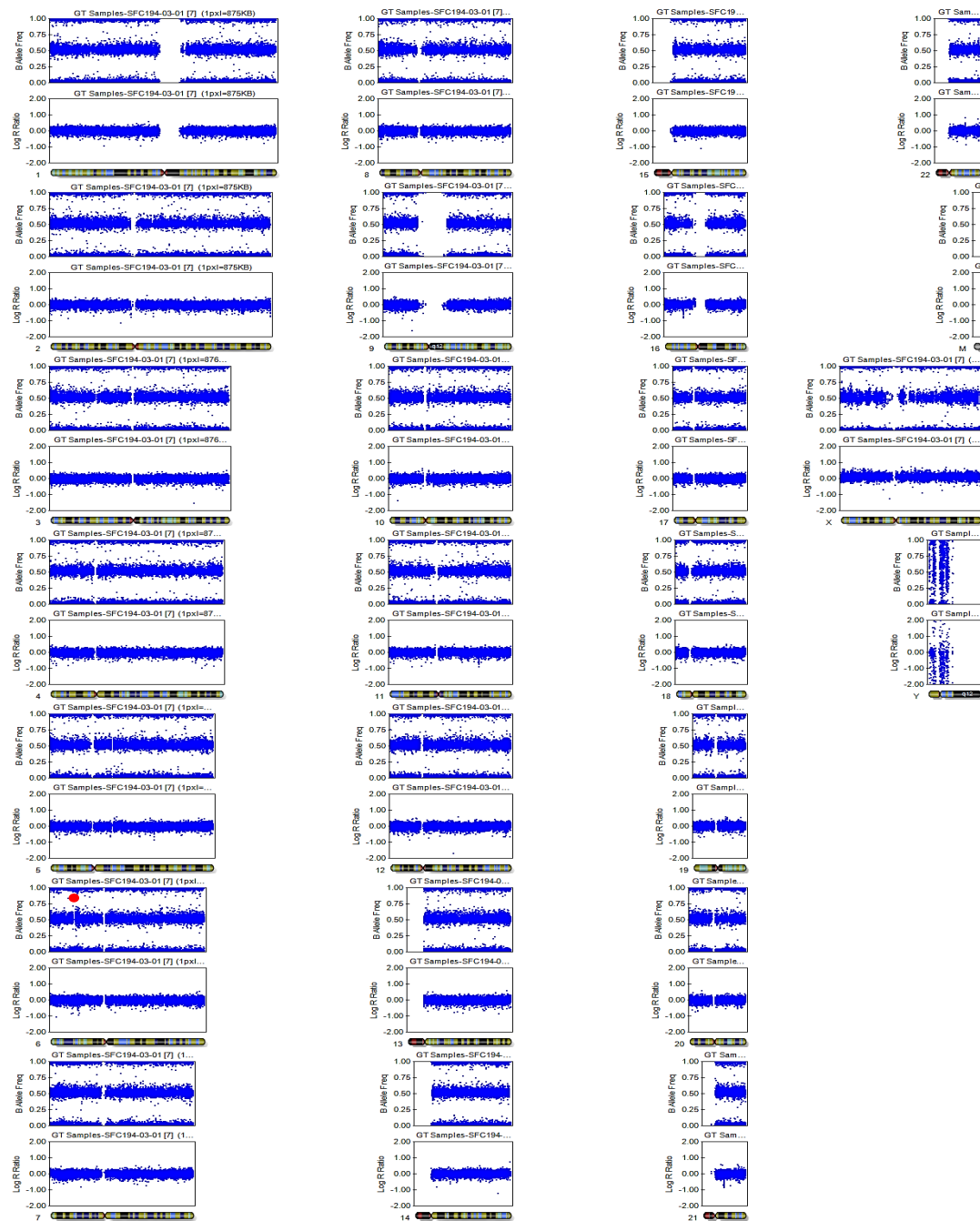
Tra-1-60: 99.9%



SNP analysis

according to WP3 SOP Preparation of DNA
and RNA samples for Illumina arrays

- Passage 10



Red dot:
Abnormality
detected
(insertion)