

Certificate of analysis

SFC165-03-01

Viability post-thaw and Morphology according to SOP19 passage 15

- Cell count immediately post-thaw: 1,2M
- Viability immediately post-thaw: 80%

Photo at 24h post-thaw:

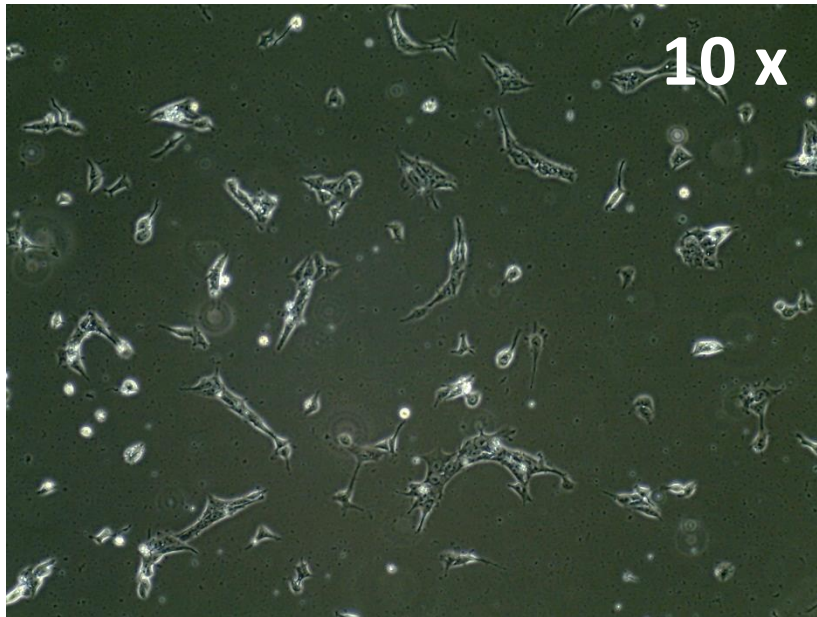
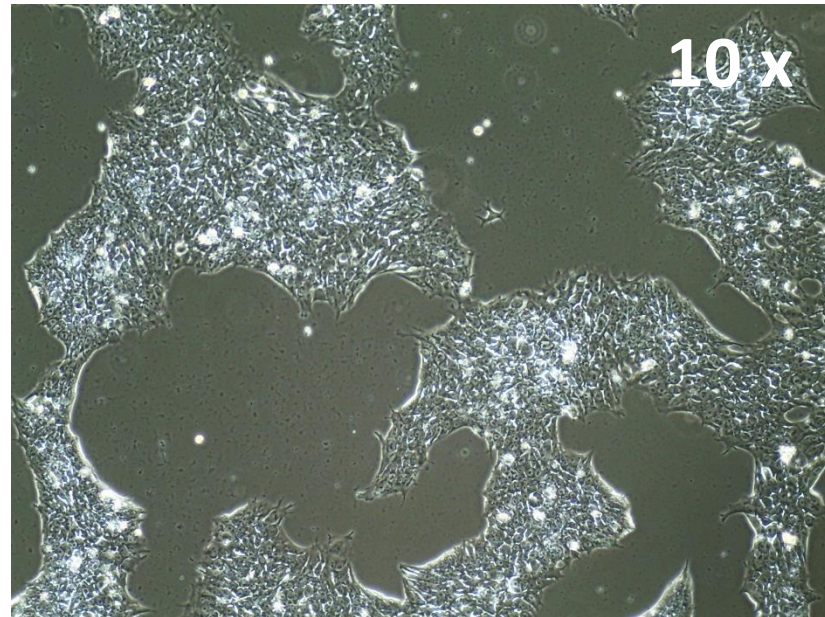


Photo at day 5 post-thaw:



Sendai clearance
according to WP3 SOP15:
undetectable at passage 15

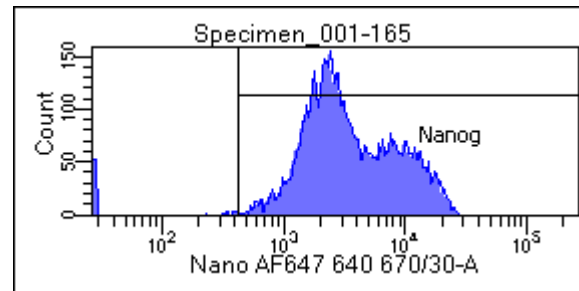
Mycoplasma test
According to MycoAlert Lonza LT07-318:
Undetectable at passage 15

> 1.2	Mycoplasma Contaminated	Positive Control	Negative Control
0.9-1.2	Status Unknown - Retest within 24 hours	2069	3338
0-0.9	Mycoplasma Free	73060	602.4
		35.3117448	0.180467346

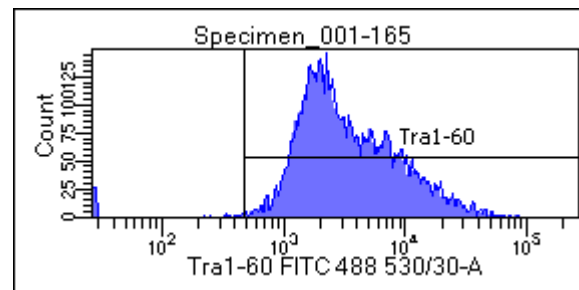
Date	21/11/2017
Cell name	SFC165-03-01
A	865.9
B	387.1
B/A	0.447049313

Flow cytometric analysis according to WP3 SOP 20 and 21 passage 15

Nanog: 98.1%



Tra1-60: 98.5%



SNP analysis

according to WP3 SOP Preparation of DNA
and RNA samples for Illumina arrays

- Passage 15
- Karyotype abnormalities to be confirmed