



# Certificate of analysis

SFC120-03-03

Operator: Jane Vowles      Date: 16/03/2015

Supervisor: Sally Cowley      Date: 16.09.2015

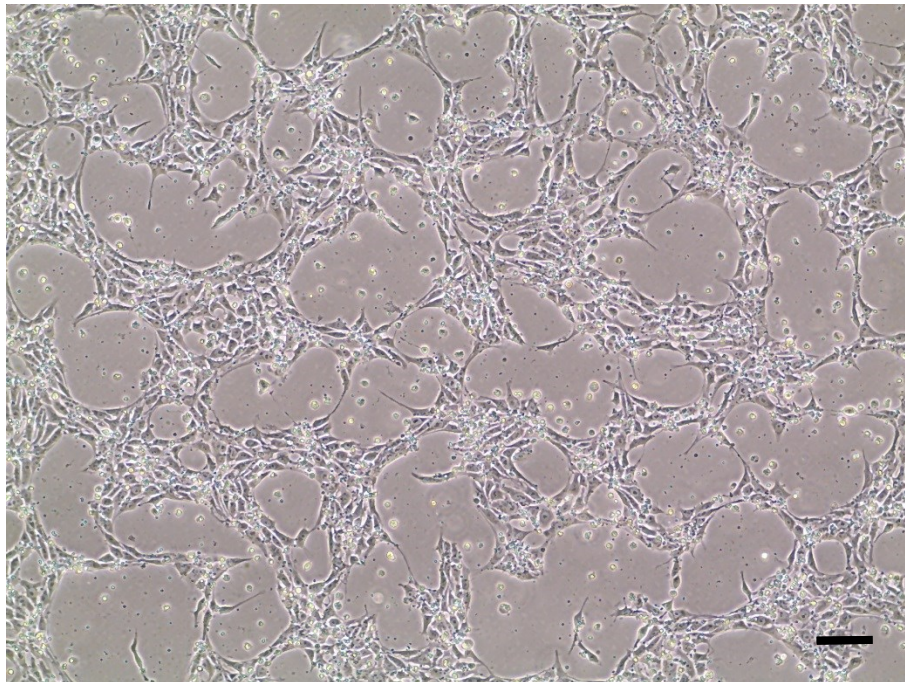
Signature: *SACowley*

# Source of fibroblasts and reprogramming information

- SF120 from University of Oxford 26/03/2014
- Reprogrammed at UOXF JMSCF
- Reprogrammed on 14/08/2014 at passage 4
- Cytotune v1 WP3 SOP10

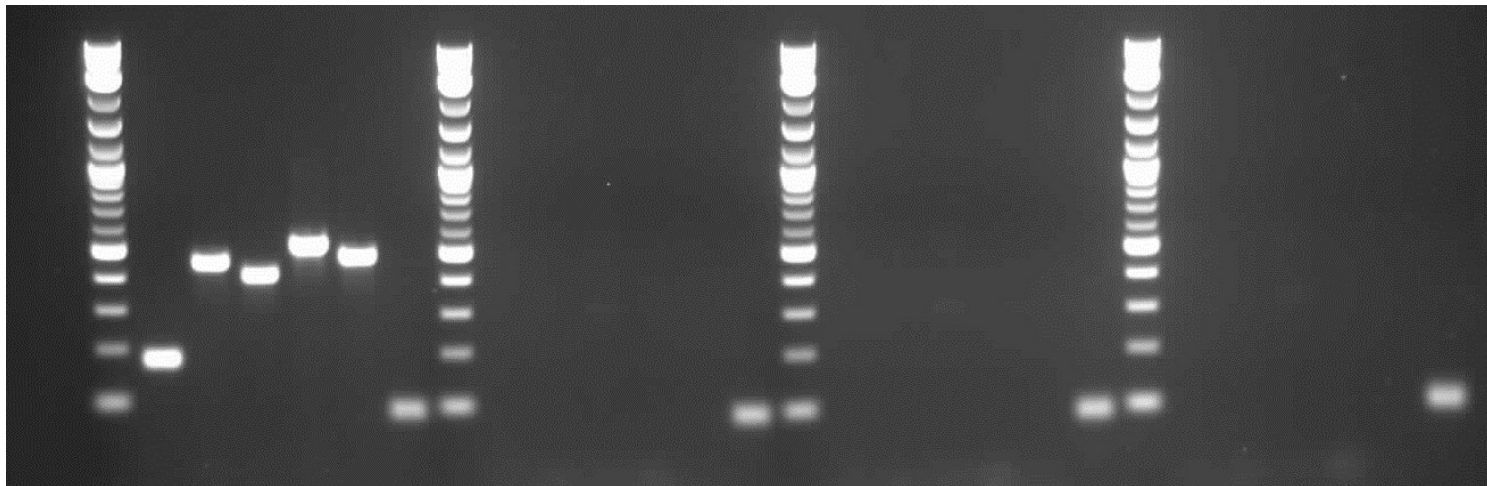
# Viability post-thaw and Morphology according to SOP19 passage no.16

- Cell count immediately post-thaw  $3.9 \times 10^6$
- Viability immediately post-thaw 79%
- Photo at 24h post-thaw (scale bar =  $100\mu\text{m}$ ):



# Sendai clearance: according to WP3 SOP15 undetectable at passage 16

2Log ladder  
Sendai virus  
Sox2  
Klf4  
C-Myc  
Oct3/4  
Actin  
Log2 ladder  
Sendai virus  
Sox2  
Klf4  
C-Myc  
Oct3/4  
Actin  
2Log ladder  
Sendai virus  
Sox2  
Klf4  
C-Myc  
Oct3/4  
Actin  
2Log ladder  
Sendai virus  
Sox2  
Klf4  
C-Myc  
Oct3/4  
Actin



+ control

SFC120-03-02

**SFC120-03-03**

SFC120-03-04

Product sizes: SeV 181bp; SeV-Sox 451bp; SeV-Klf 410bp; SeV-Myc 532bp; SeV-Oct 483bp; Actin 92bp

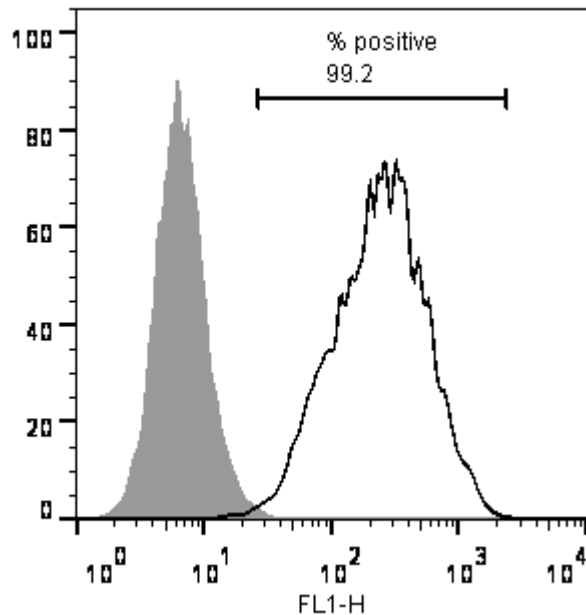
# Mycoplasma Test:

## According to MycoAlert Lonza LT07-318 undetectable at passage 17

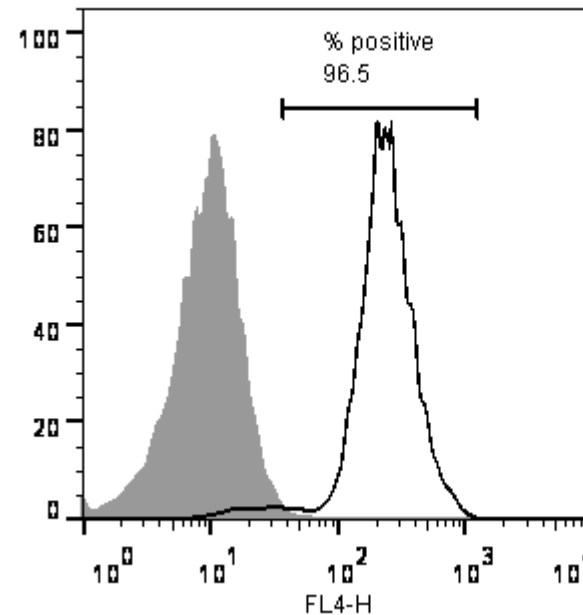
Sample	Clone	Passage number	Initial	Reading 1	Reading 2	Ratio/Status
+ve control				5.084	148.1	29.13
-ve control				4.485	0.531	0.12
	SFC120-03-03	p8+9	JV	1.191	0.913	0.77

# Flow cytometric analysis according to WP3 SOP 20 and 21 passage p18

Tra-1-60:



NANOG:



# SNP analysis

according to WP3 SOP Preparation of DNA and RNA samples for Illumina arrays

- Passage no. 16
- Identity to parent fibroblasts confirmed
- Karyotype abnormalities: none detected
- For details and raw data see StemDB