



Certificate of analysis

SFC083-07-10

Operator: C Browne

Date:01/08/2017

Supervisor: Sally Cowley

Date:25/02/2018

Signature: *SACowley*

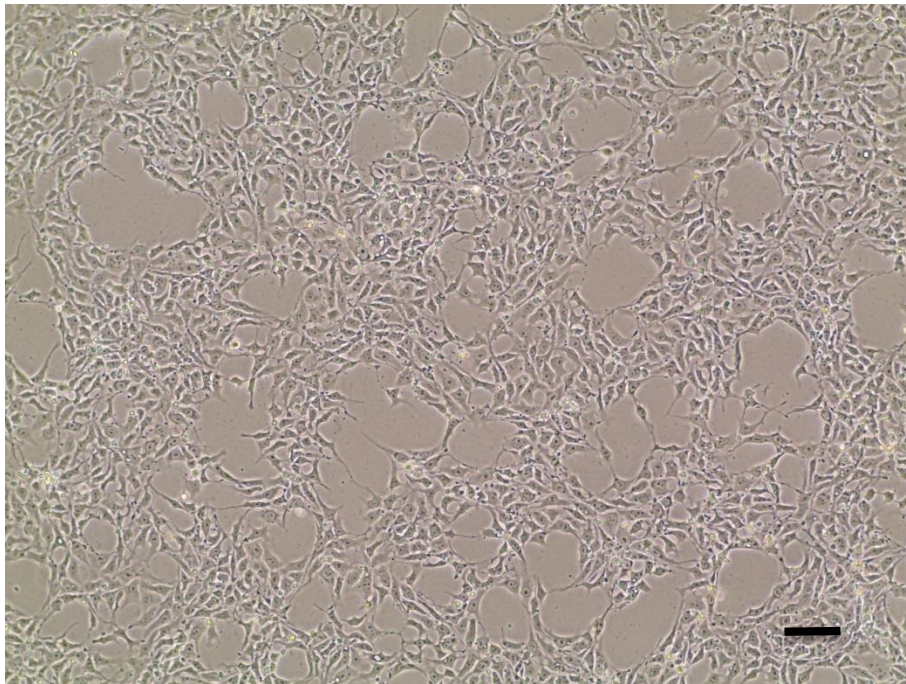
Source of fibroblasts and reprogramming information

- SF083 from Luebeck
20/09/2016
- Reprogrammed at UOXF-S
- Reprogrammed on 09/02/17 at passage 4/CB
- Cytotune v2 WP3 SOP10

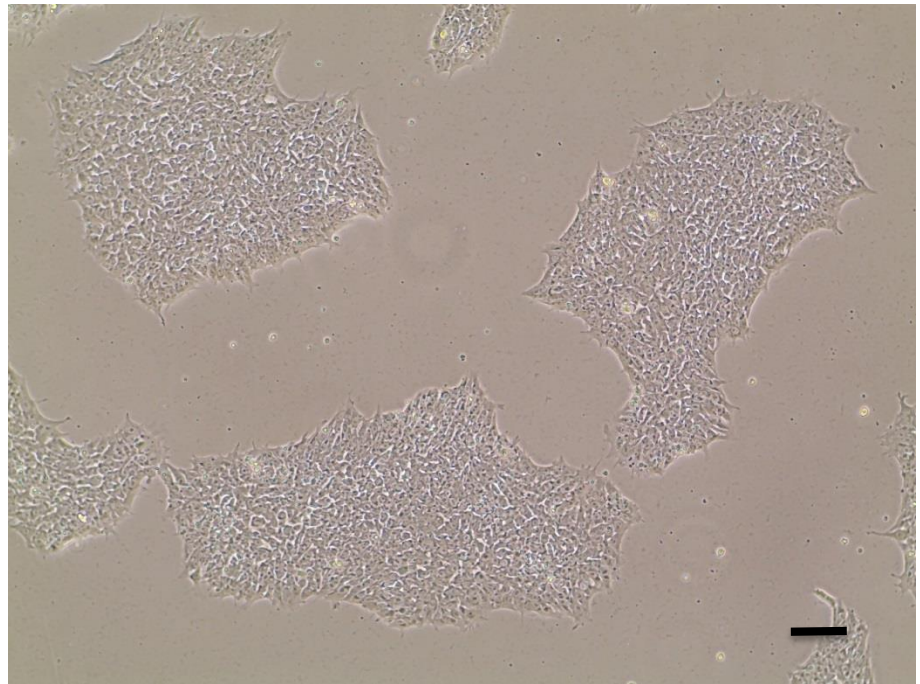
Viability post-thaw and Morphology according to SOP19 passage 10

- Cell count immediately post-thaw 79.7×10^6
- Viability immediately post-thaw 79.4%
- Photo at 24h and day 4 post-thaw (scale bar = $100\mu\text{m}$):

24h post-thaw 80% plated

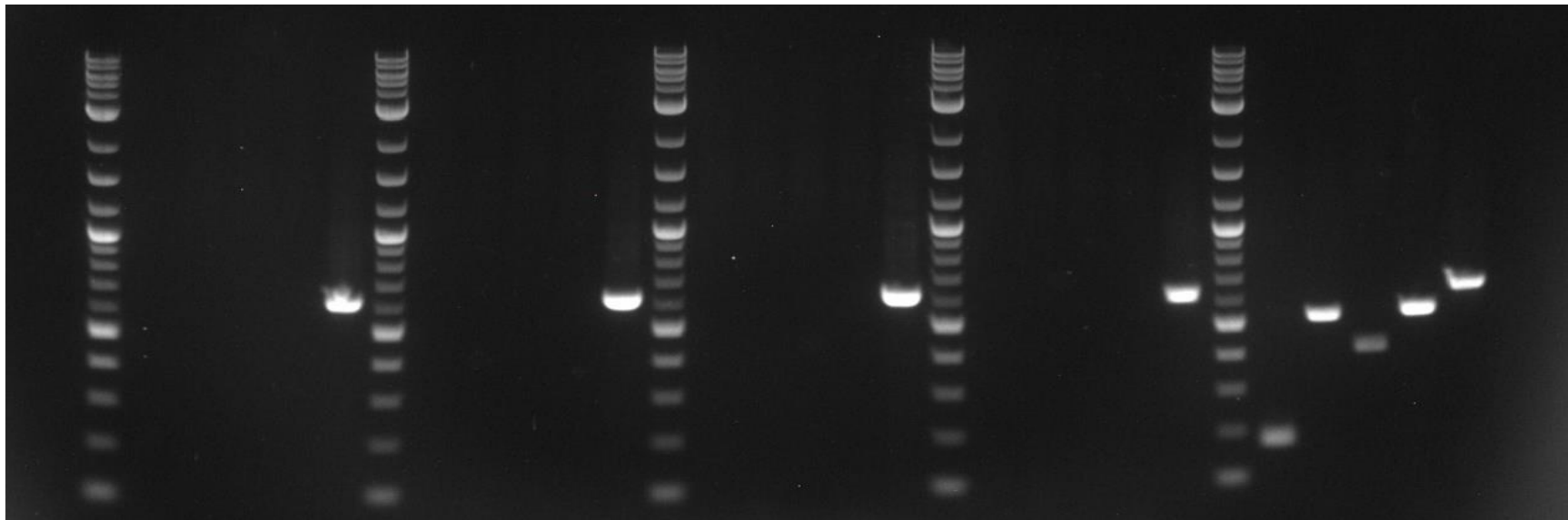


Day 4 post-thaw 20% plated



Sendai Cytotune 2 clearance: according to WP3 SOP15 undetectable at passage 10

2Log ladder
Sendai virus
KOS
Klf4
C-Myc
Actin
2Log ladder
Sendai virus
KOS
Klf4
C-Myc
Actin
2Log ladder
Sendai virus
KOS
Klf4
C-Myc
Actin
2Log ladder
Sendai virus
KOS
Klf4
C-Myc
Actin
2Log ladder
Sendai virus
KOS
Klf4
C-Myc
Actin



SFCxxx-yy-zz

SFCxxx-yy-zz

SFC083-07-10

SFCxxx-yy-zz

+ control

Product sizes: SeV 181bp; KOS 528bp; SeV-Klf 410bp; SeV-Myc 532bp; Actin 623bp

Mycoplasma Test:

According to MycoAlert Lonza LT07-318 undetectable at passage 10

Sample	Clone	Passage number	Initial	Reading 1	Reading 2	Ratio/Status
+ve control				6.0875	31.66	5.20
-ve control				11.13	1.821	0.16
3	SFC083-07-10	p10	CB	4.924	2.119	0.43

Results mean

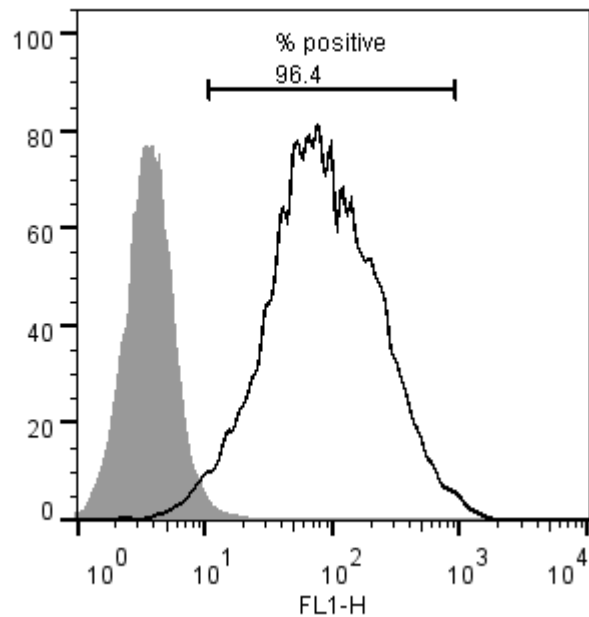
Ratio **0 - 0.999** negative for mycoplasma

Ratio **1 – 1.3** Borderline Result (retest required)

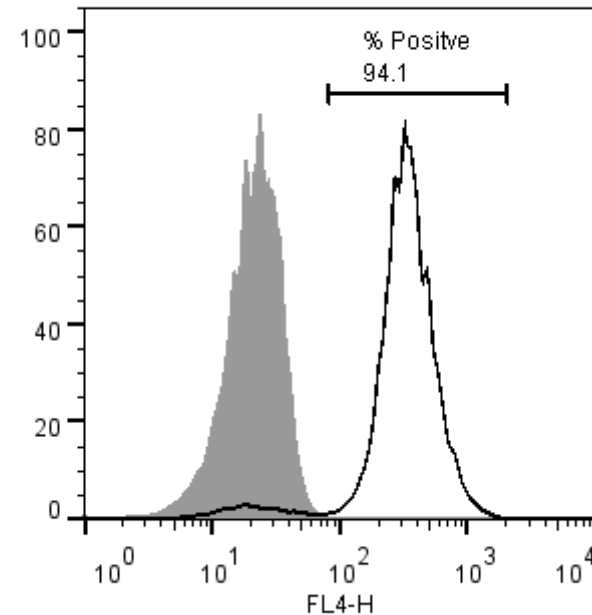
Ratio above **1.3** positive for mycoplasma

Flow cytometric analysis according to WP3 SOP 20 and 21 passage 10

Tra-1-60:



NANOG:



SNP analysis

according to WP3 SOP Preparation of DNA and RNA samples for Illumina arrays

- Passage 11
- Identity to parent fibroblasts confirmed by Genomestudio scatterplot
- No gross karyotype abnormalities detected by Karyostudio

