

# Certificate of analysis

SFC076-03-01

# Viability post-thaw and Morphology passage 10

- Cell count immediately post-thaw: 1,9 M
- Viability immediately post-thaw: 85%

Photo at 24h post-thaw:

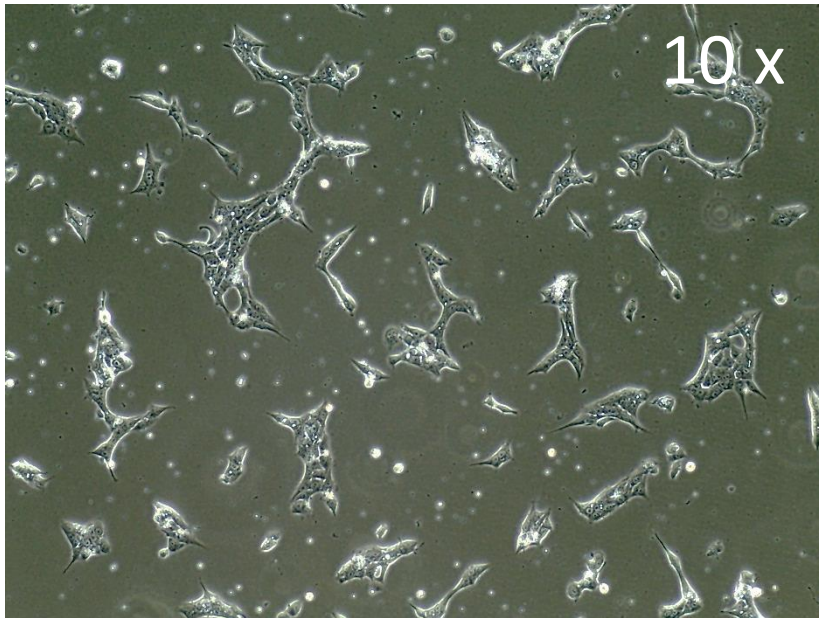
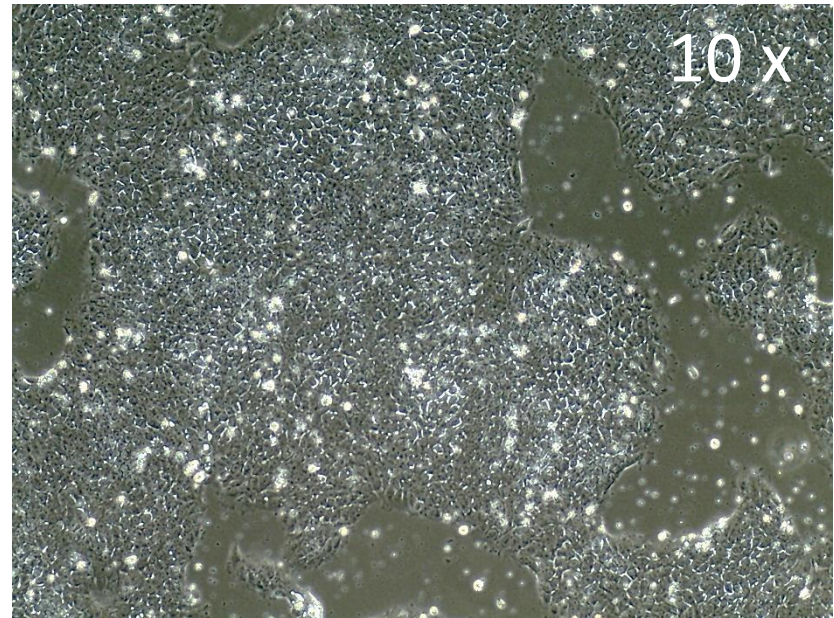


Photo at day 5 post-thaw:



Sendai clearance  
according to WP3 SOP15:  
undetectable at passage 10

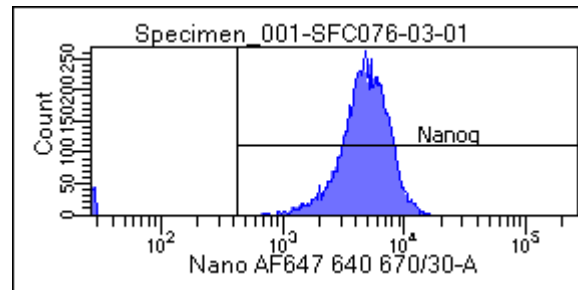
Mycoplasma test  
According to MycoAlert Lonza LT07-318:  
Undetectable at passage 10

| > 1.2   | <b>Mycoplasma Contaminated</b>             | Positive Control  | Negative Control   |
|---------|--|-------------------|--------------------|
| 0.9-1.2 | Status Unknown - Retest<br>within 24 hours | 2069              | 3338               |
| 0-0.9   | <b>Mycoplasma Free</b>                     | 73060             | 602.4              |
|         |  | <b>35.3117448</b> | <b>0.180467346</b> |

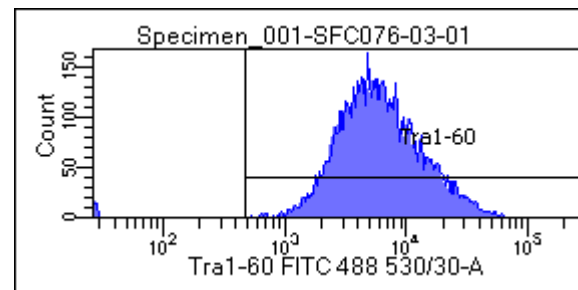
|           |                    |
|-----------|--------------------|
| Date      | 21/02/2018         |
| Cell name | SFC076             |
| A         | 632.5              |
| B         | 444.0              |
| B/A       | <b>0.701976285</b> |

# Flow cytometric analysis according to WP3 SOP 20 and 21 passage 10

Nanog: 98.6%



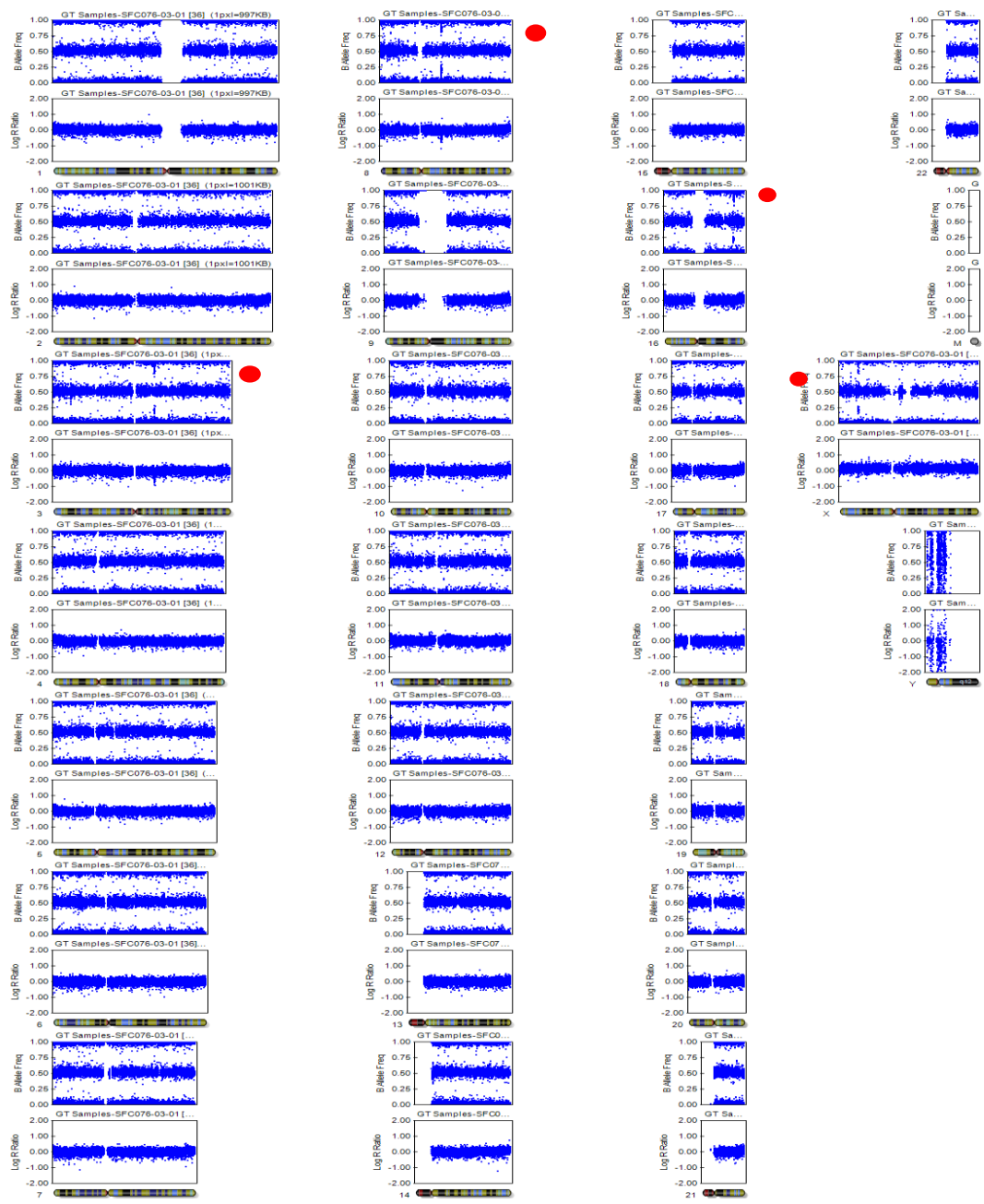
Tra-1-60: 99.5%



# SNP analysis

according to WP3 SOP Preparation of DNA  
and RNA samples for Illumina arrays

- Passage 10



Red dots: Small abnormalities detected