



IPMAR

IPSC Platform to Model Alzheimer's Disease Risk

Certificate of analysis

DRICUi039-A

Operators: J Winston/C Bridge/R O'Donoghue

Date: 03/06/2026

Supervisor: H Hall-Roberts

Date: 19/06/2026

Signature: *HCRoberts*

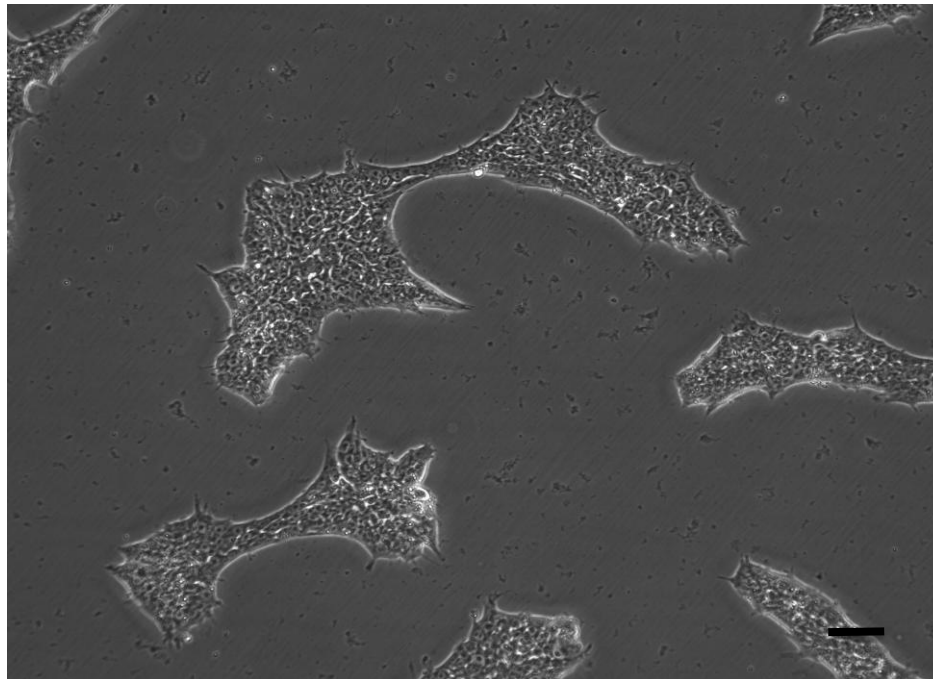
Source of cells and reprogramming information

- ADCAR24398UC T cells from Cardiff 26/10/22
- Reprogrammed at UOXF AKA IPMAR45
- Reprogrammed on 01/2023 Sally Cowley/
Sarah Ellwood (Oxford)
- Reprogramming system Cytotune v2
- Clone DRICUi039-A = IPMAR45A2
- Banked at p12, 07/05/25, Rachel
O'Donoghue/Jincy Winston (Cardiff)

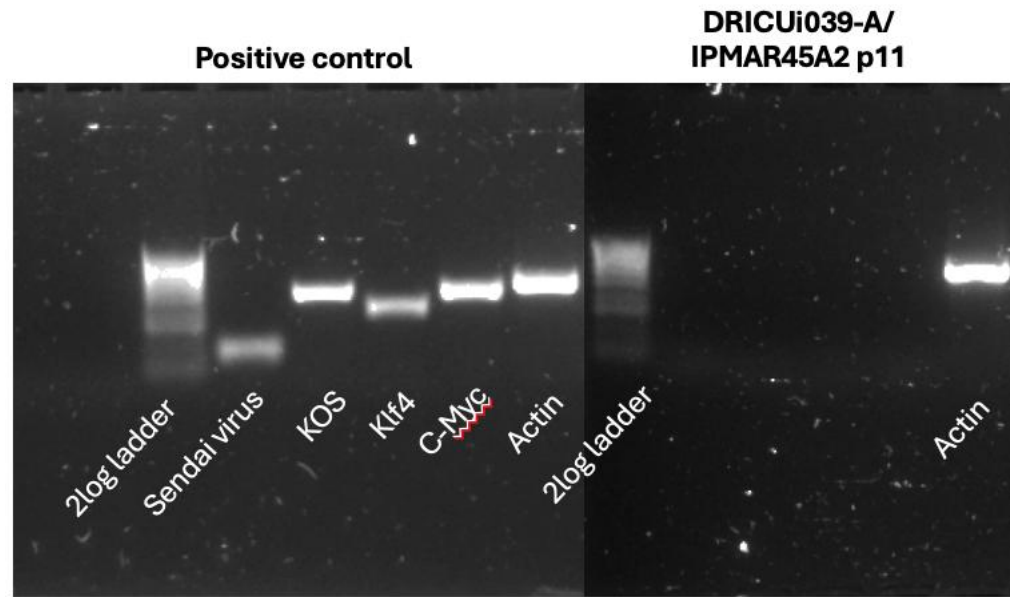
Viability post-thaw and Morphology according to JMSCFSOP19 passage 13

- Vial cell count immediately post-thaw 1.38×10^6
- Viability immediately post-thaw 95.8%
- Photo at day 2 post-thaw (scale bar = $100\mu\text{m}$):

Day 2 post-thaw, 25% plated to 1w.6wp



Sendai Cytotune 2 clearance: according to Cytotune manual Virus undetectable at passage 11



Product sizes: SeV 181bp; KOS 528bp; SeV-Klf 410bp; SeV-Myc 532bp; Actin 623bp

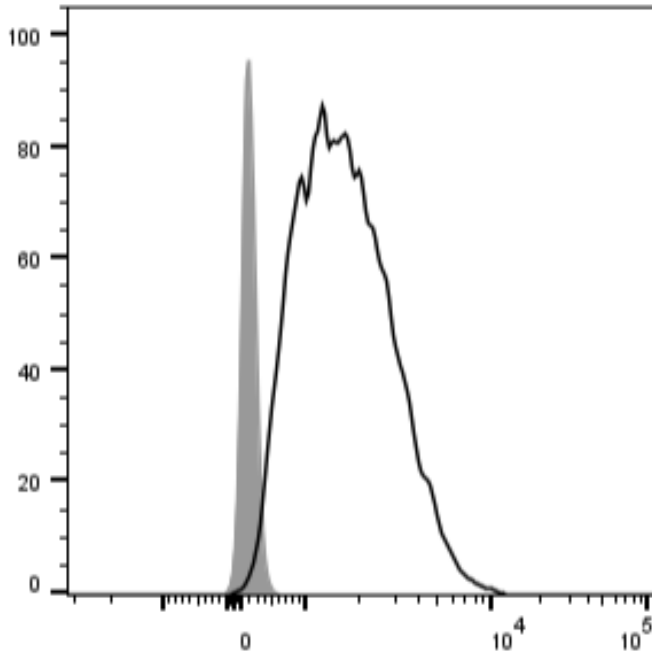
Sterility:

Mycoplasma test performed by Eurofins Genomics on 10/03/2026, undetectable at passage 15.

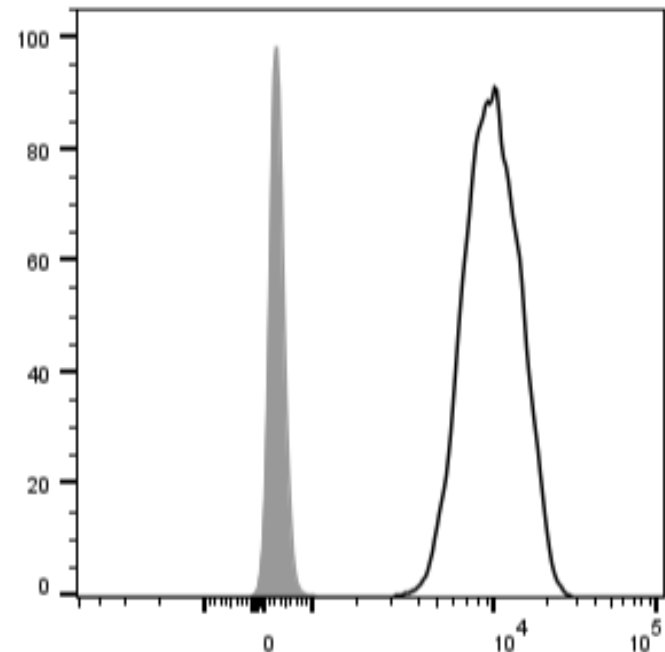
Visual inspection of thawed cells cultured without antibiotic/antimycotic for 4 days:
no evidence of bacteria, yeast or fungus.

Flow cytometric analysis according to JMSCFSOP05 passage 14

DRICUi039-A TRA-1-60 97.7%



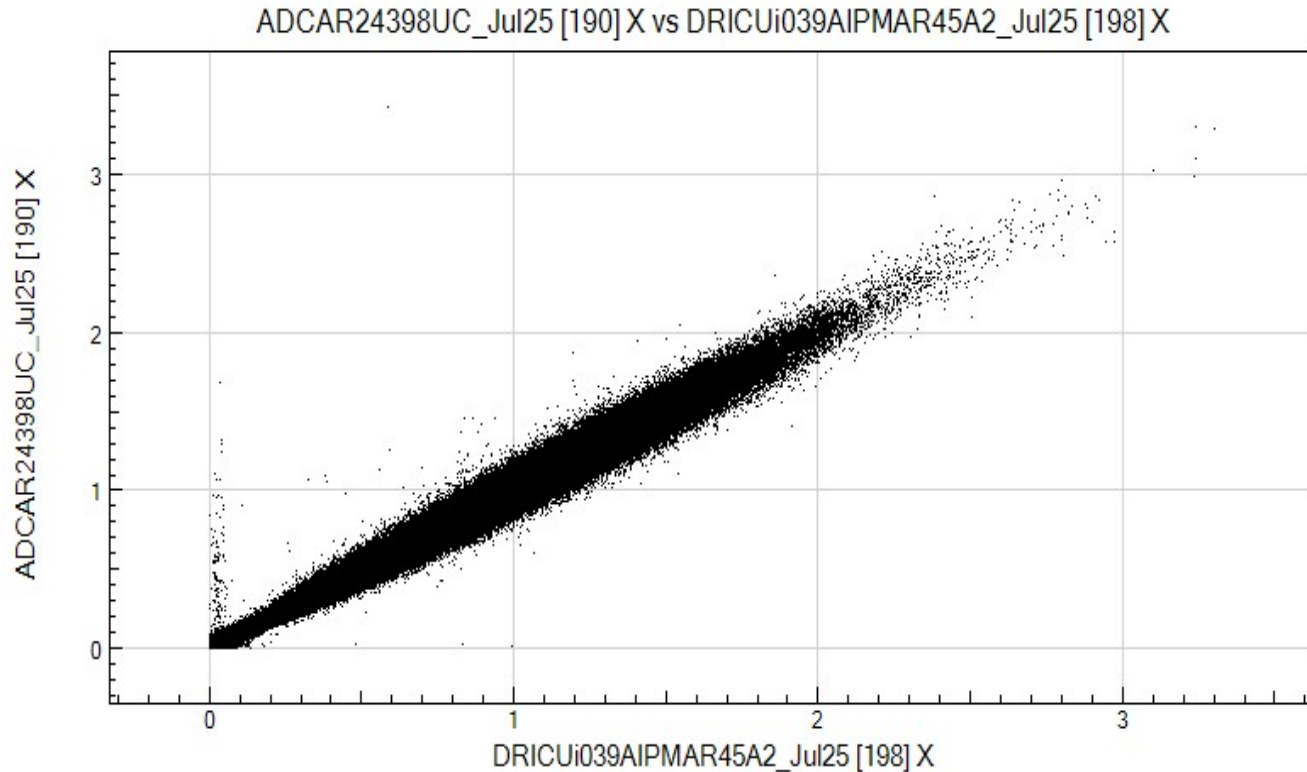
DRICUi039-A Nanog 99.7%



Illumina GSA SNP analysis according to JMSCFSOP16

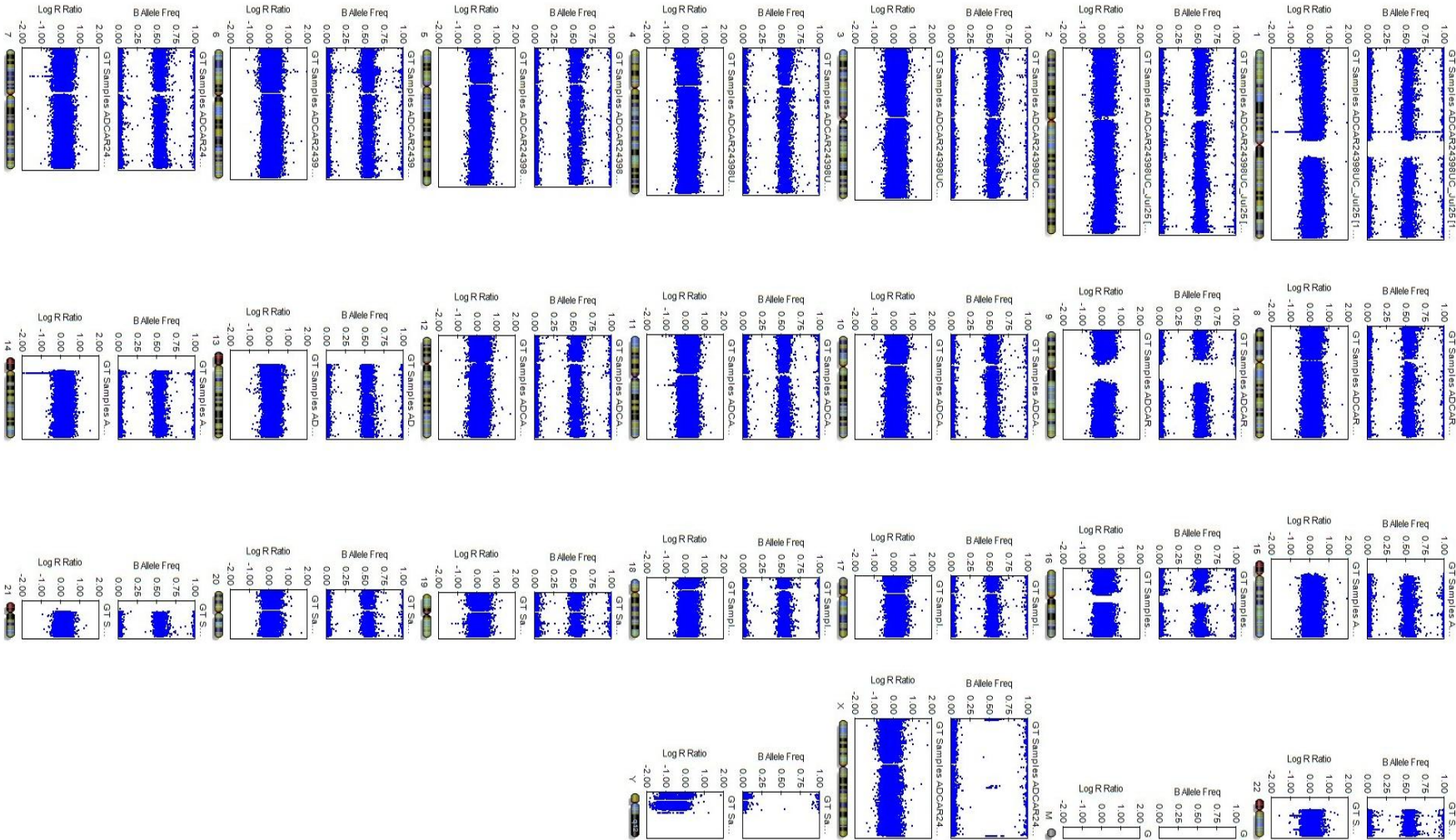
- Passage 12
- Identity to parent PBMC confirmed
- Karyotype abnormalities:
 - No gross abnormalities detected vs PBMC

Alignment of ADCAR24398UC PBMC SNPs with DRICUi039-A



Regression Coefficient R^2 : 0.9914

Karyogram ADCAR24398UC PBMC



Karyogram DRICUi039-A

