



IPMAR

IPSC Platform to Model Alzheimer's Disease Risk

Certificate of analysis

DRICUi043-A

Operators: C Bridge/J Winston/R O'Donoghue

Date: 03/06/2026

Supervisor: H Hall-Roberts

Date: 19/06/2026

Signature: *HCRoberts*

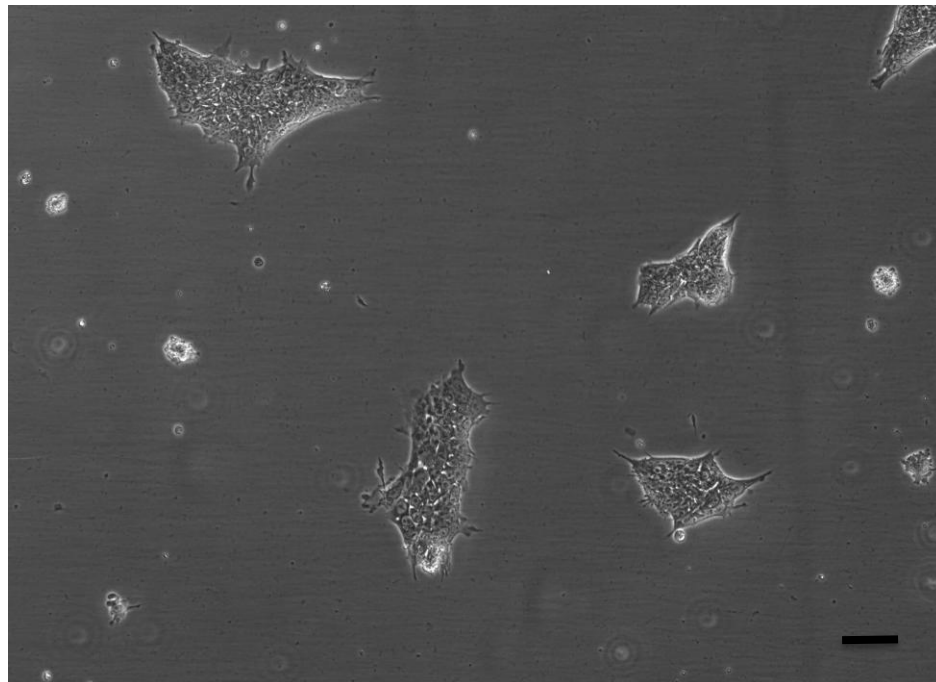
Source of cells and reprogramming information

- ADCAR20174CA T cells from Cardiff 21/02/23
- Reprogrammed at UOXF AKA IPMAR49
- Reprogrammed on 03/2023 Sally Cowley/
Sarah Ellwood (Oxford)
- Reprogramming system Cytotune v2
- Clone DRICUi043-A = IPMAR49A4
- Banked at P13, 11/07/23, Jincy Winston
(Cardiff)

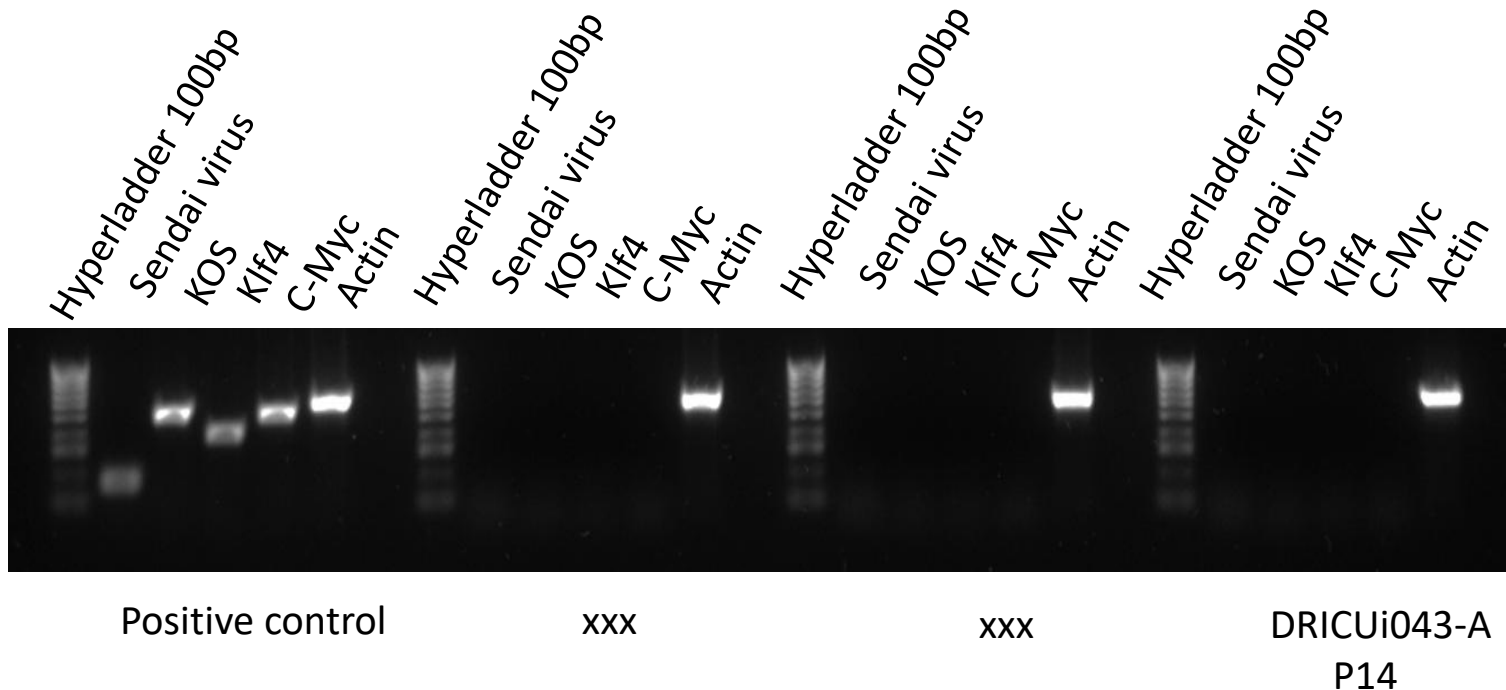
Viability post-thaw and Morphology according to JMSCFSOP19 passage 14

- Vial cell count immediately post-thaw 2.16×10^6
- Viability immediately post-thaw 85.2%
- Photo at day 2 post-thaw (scale bar = $100\mu\text{m}$):

Day 2 post-thaw, 25% plated to 1w.6wp



Sendai Cytotune 2 clearance: according to Cytotune manual Virus undetectable at passage 14



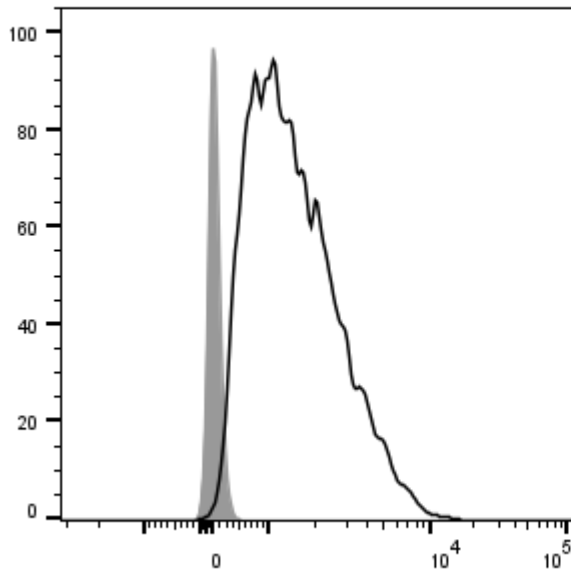
Sterility:

Mycoplasma test performed by Eurofins Genomics on 13/03/2025, undetectable at passage 15.

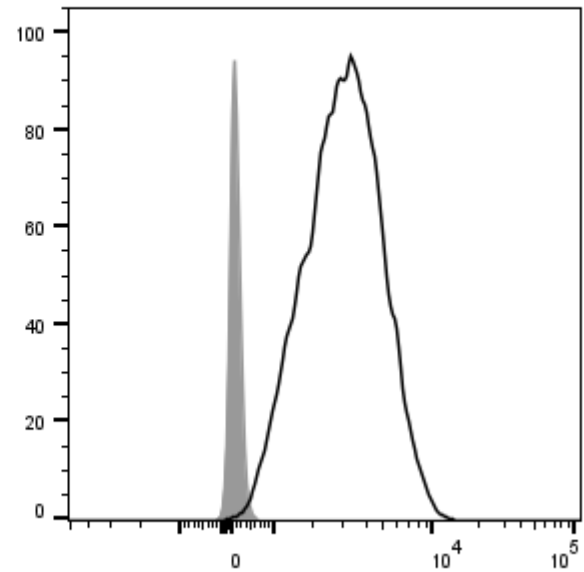
Visual inspection of thawed cells cultured without antibiotic/antimycotic for 4 days:
no evidence of bacteria, yeast or fungus.

Flow cytometric analysis according to JMSCFSOP05 passage 13

DRICUi043-A TRA-1-60 97.3%



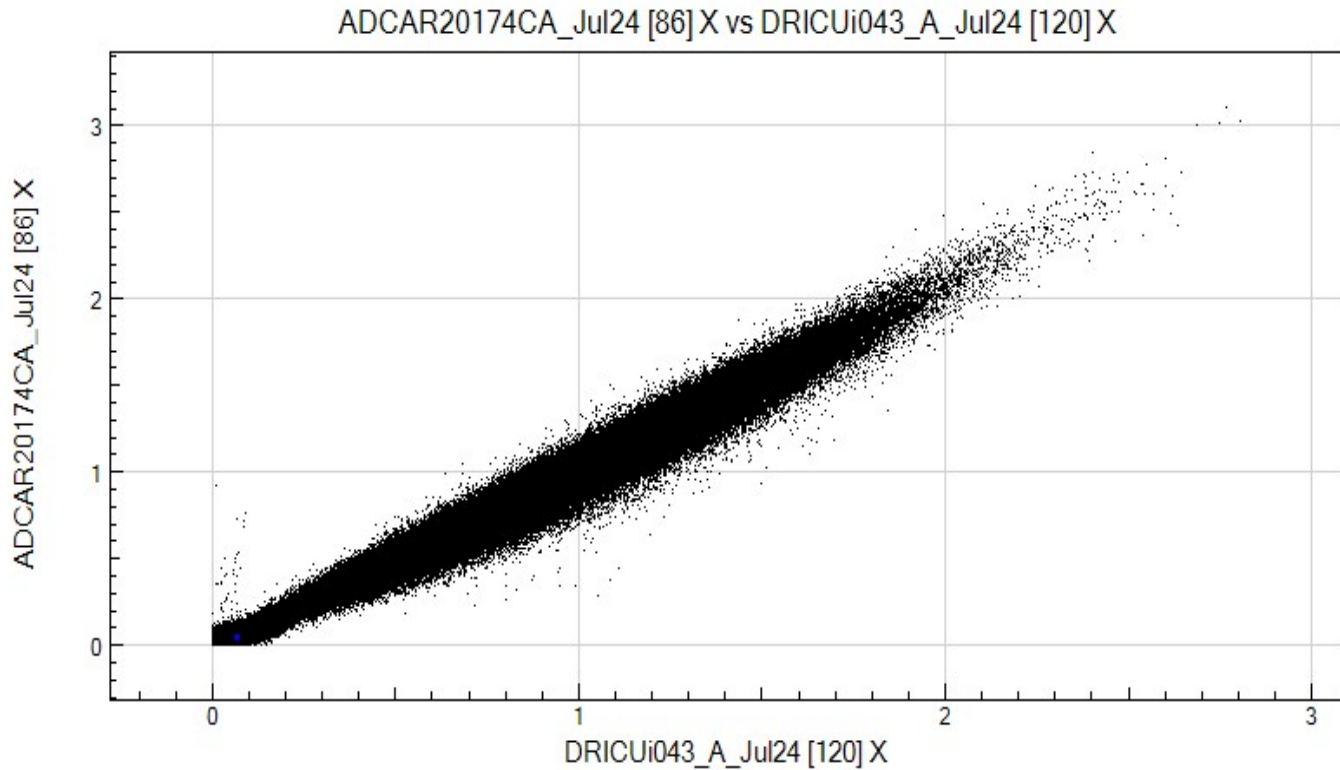
DRICUi043-A Nanog 99.6%



Illumina GSA SNP analysis according to JMSCFSOP16

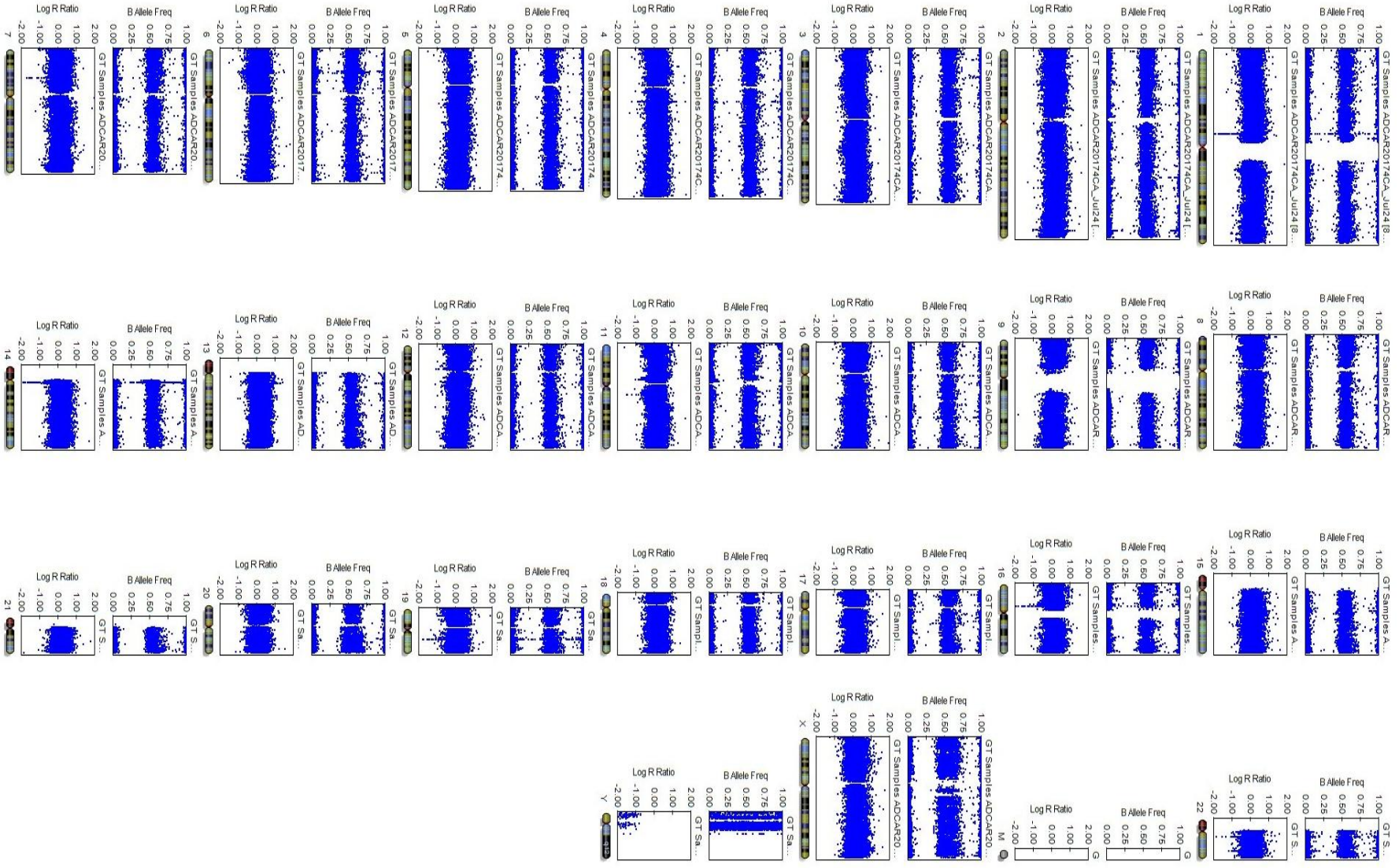
- Passage 13
- Identity to parent PBMC confirmed
- Karyotype abnormalities:
 - No gross abnormalities detected vs PBMC

Alignment of ADCAR20174CA PBMC SNPs with DRICUi043-A



Regression Coefficient R^2 : 0.9886

Karyogram ADCAR20174CA PBMC



Karyogram DRICUi043-A

