



# Certificate of analysis

SFC088-03-05

Operator: C Browne

Date: 10/08/17

Supervisor: Sally Cowley Date: 25/02/2018

Signature: *SACowley*

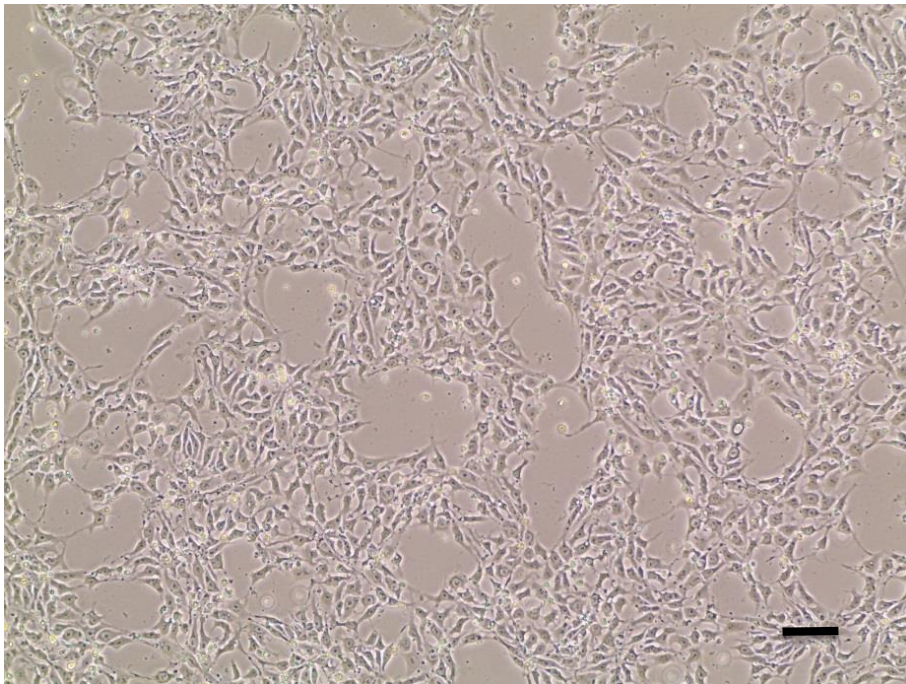
# Source of fibroblasts and reprogramming information

- SF088 from Luebeck
- Reprogrammed at UOXF-S
- Reprogrammed on 22/03/17 at passage 3/CB
- Cytotune v1 or v2 WP3 SOP10

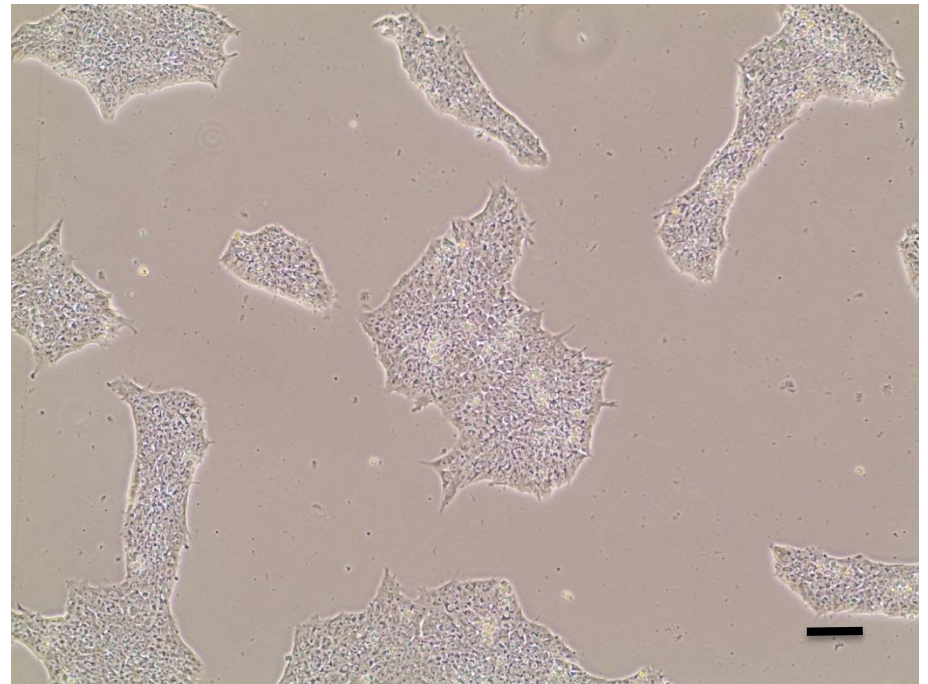
# Viability post-thaw and Morphology according to SOP19 passage p10

- Cell count immediately post-thaw  $2.45 \times 10^6$
- Viability immediately post-thaw 80.4%
- Photo at 24h and day 3 post-thaw (scale bar = 100 $\mu$ m):

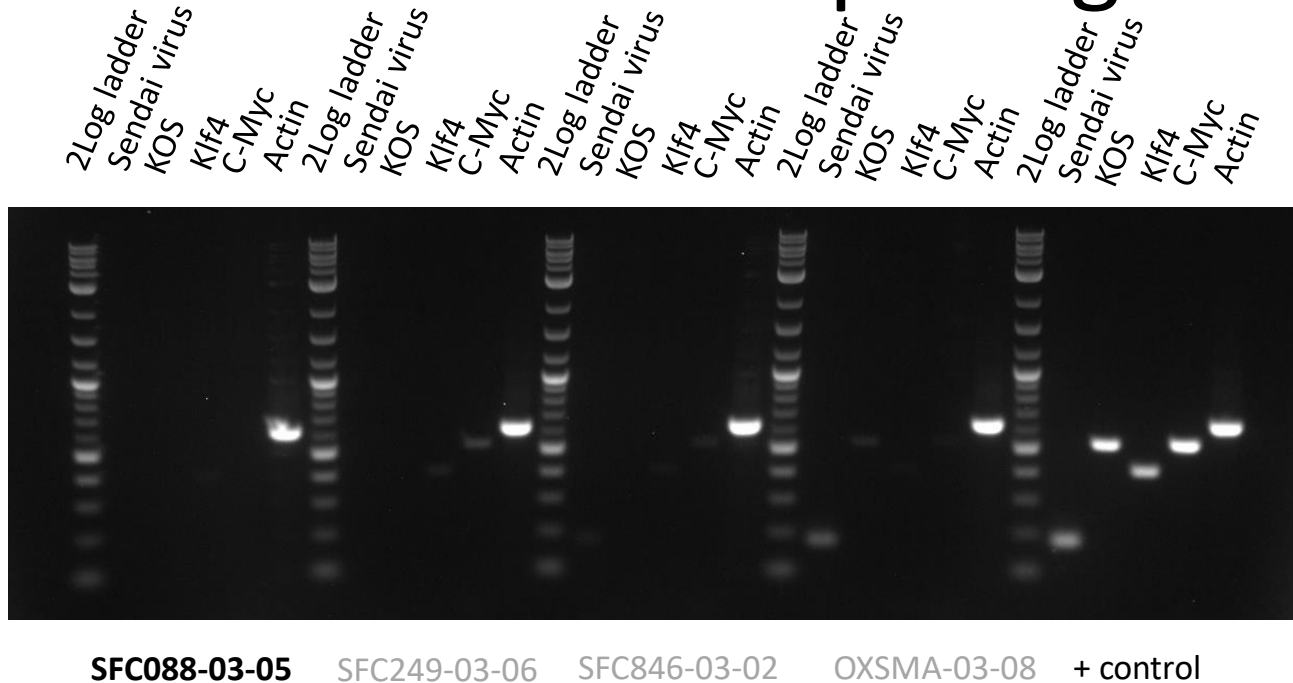
24h post-thaw 80% plated



Day 3 post-thaw 20% plated



# Sendai Cytotune 2 clearance: according to WP3 SOP15 undetectable at passage 10



Product sizes: SeV 181bp; KOS 528bp; SeV-Klf 410bp; SeV-Myc 532bp; Actin 623bp

# Mycoplasma Test:

## According to MycoAlert Lonza LT07-318 undetectable at passage 10

Sample	Clone	Passage number	Initial	Reading 1	Reading 2	Ratio/Status
+ve control				12.51	436.60	34.90
-ve control				5.54	0.30	0.05
1	SFC088-03-05	p10	CB	0.98	0.49	0.50

Results mean

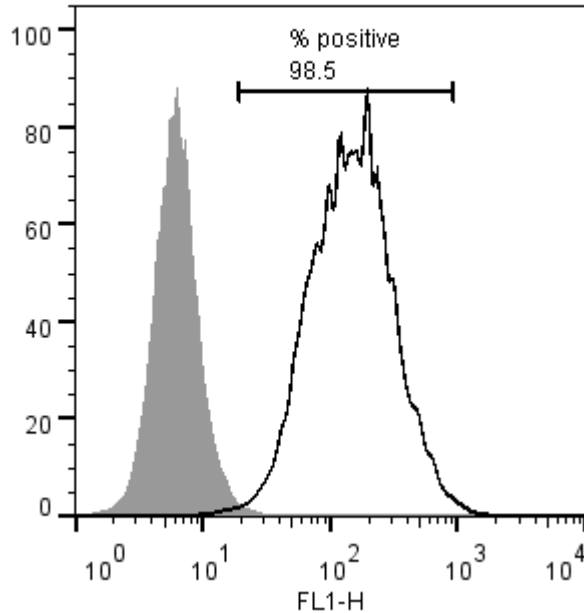
Ratio **0 - 0.999** negative for mycoplasma

Ratio **1 – 1.3** Borderline Result (retest required)

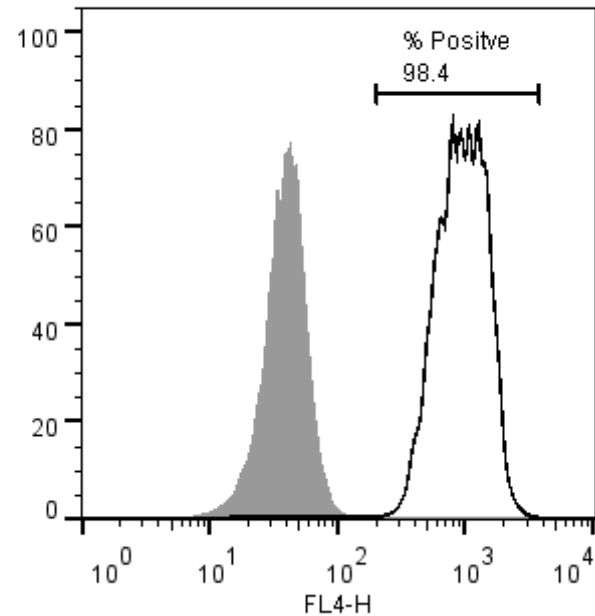
Ratio above **1.3** positive for mycoplasma

# Flow cytometric analysis according to WP3 SOP 20 and 21 passage 10

Tra-1-60:



NANOG:



# SNP analysis

according to WP3 SOP Preparation of DNA and RNA samples for Illumina arrays

- Passage 10
- Identity to parent fibroblasts confirmed by Genomestudio scatterplot
- No gross karyotype abnormalities detected by Karyostudio

