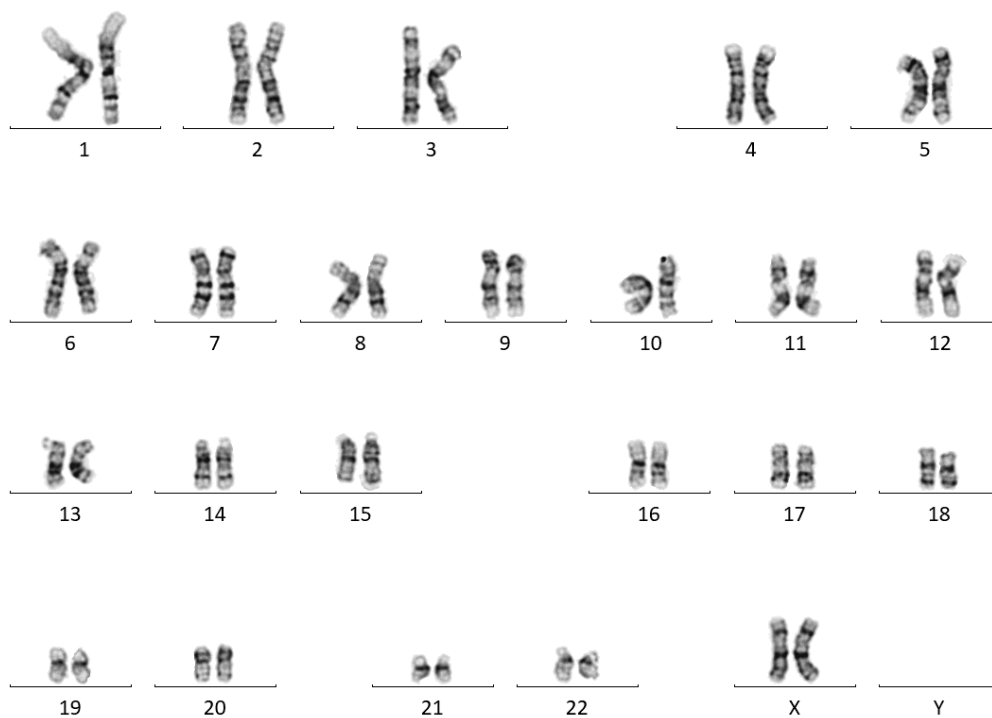
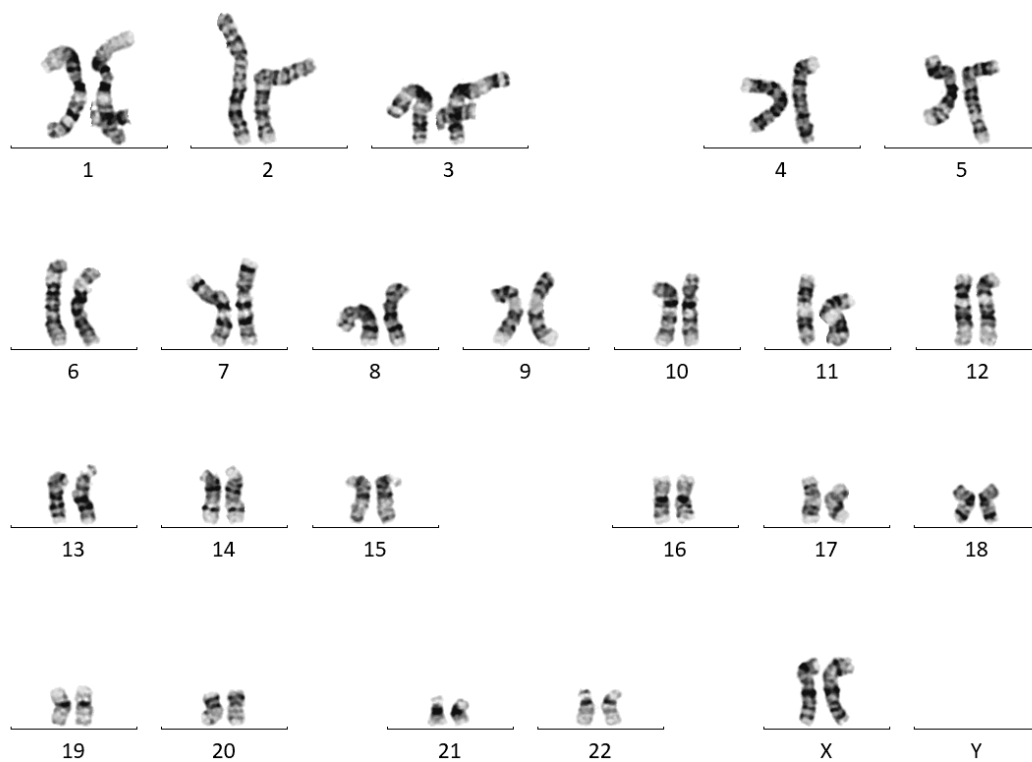


MS_0009.1 and MS_0009.2

IPSC CL MS9.1p16: 46,XX



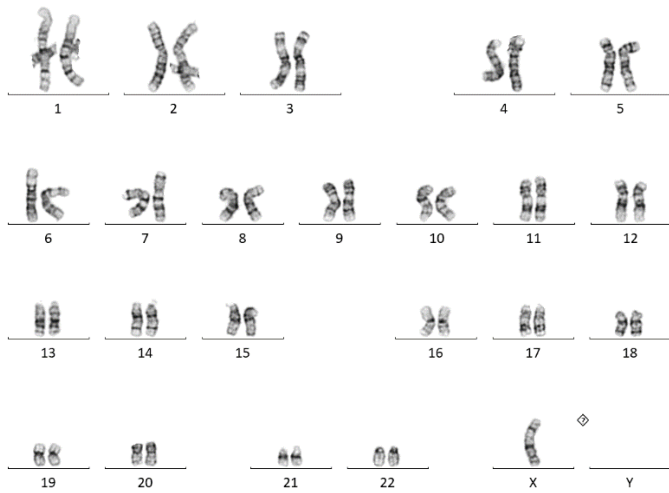
IPSC CL MS9.2p14: 46,XX



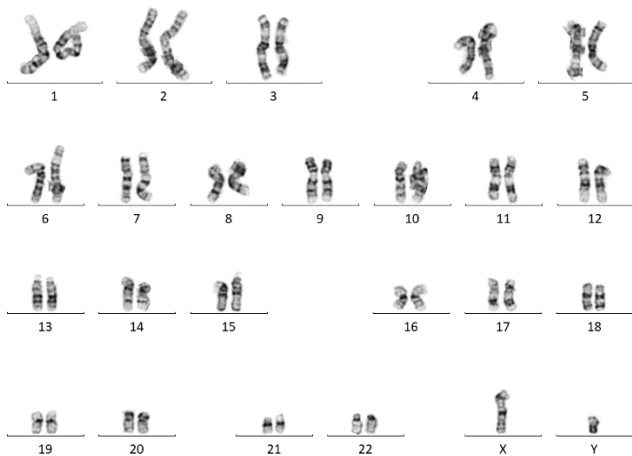
MS_0015.1, MS_0015.2 and MS_0015.3

Please note MS_0015.1 has lost its Y chromosome.

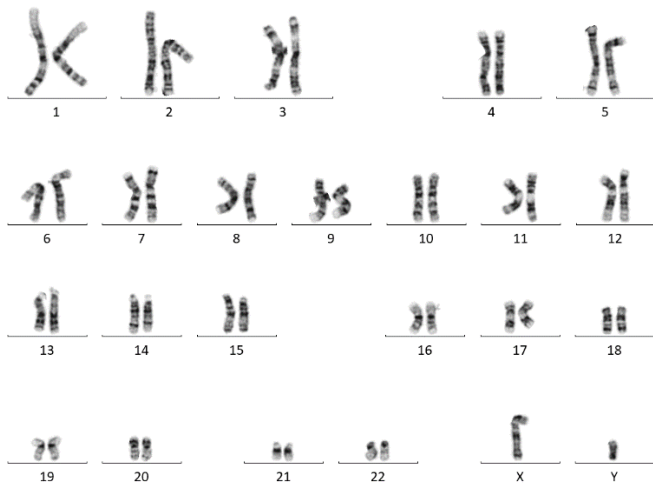
IPSC CL MS15.1p16: 45,X



IPSC CL MS15.2p16: 46,XY

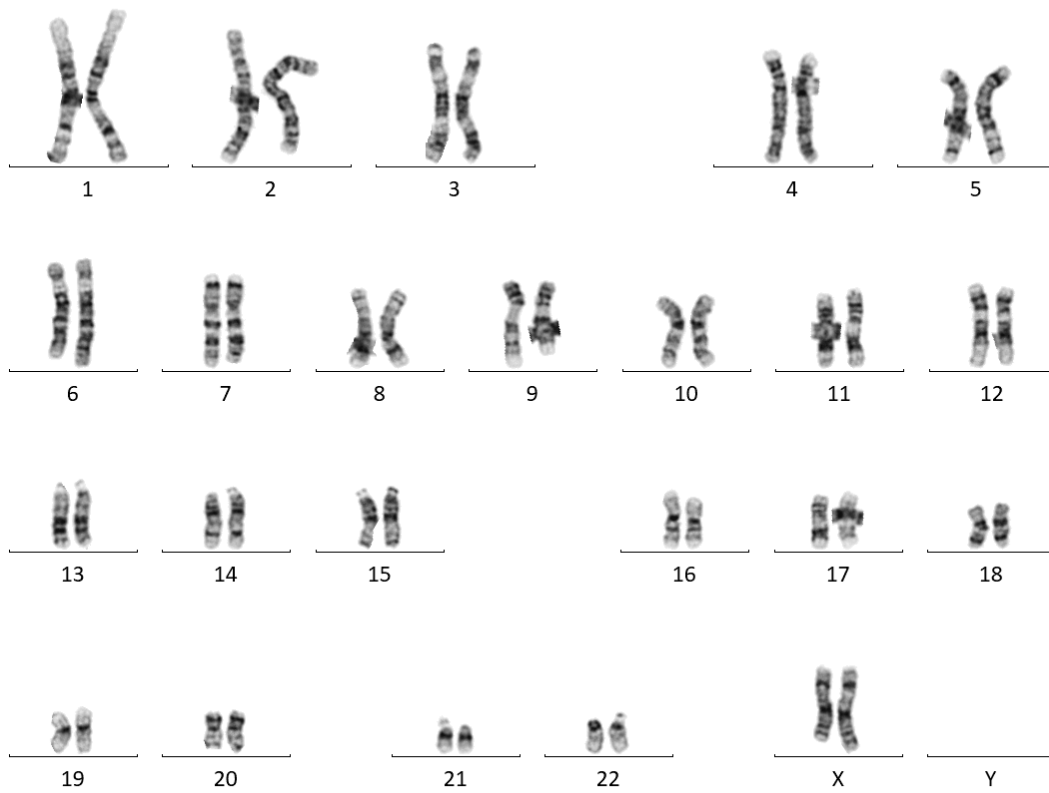


IPSC - CL MS15.3p14: 46,XY

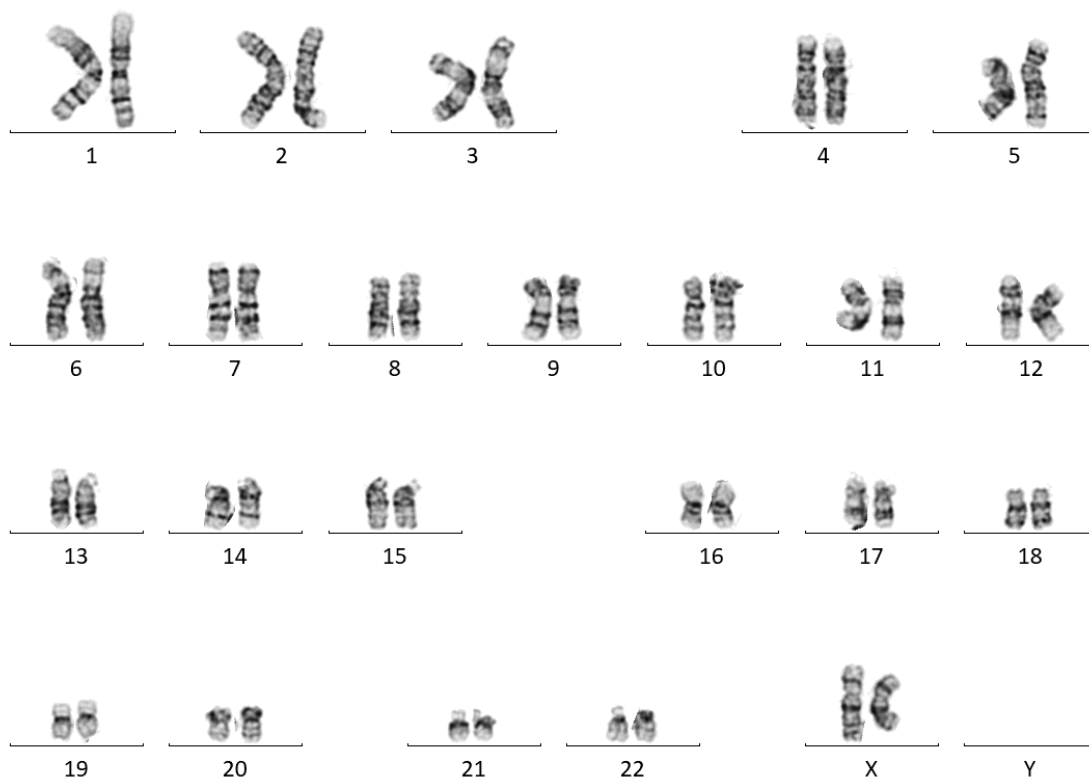


MS_0020.1 and MS_0020.2

IPSC CL MS20.1p14: 46,XX

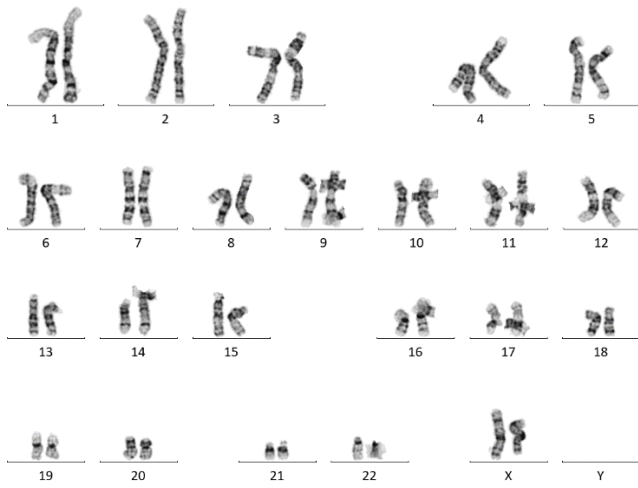


iPSC CL MS20.2p16: 46,XX

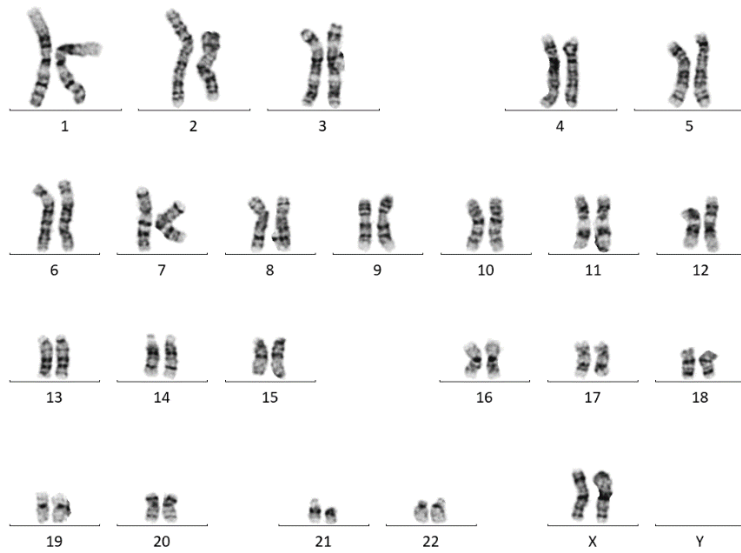


MS_0029.1, MS29.2 and MS_0029.3

IPSC - CL MS29.1p13: 46,XX



IPSC CL MS29.2: 46,XX



IPSC CL MS29.3p13: 46,XX

