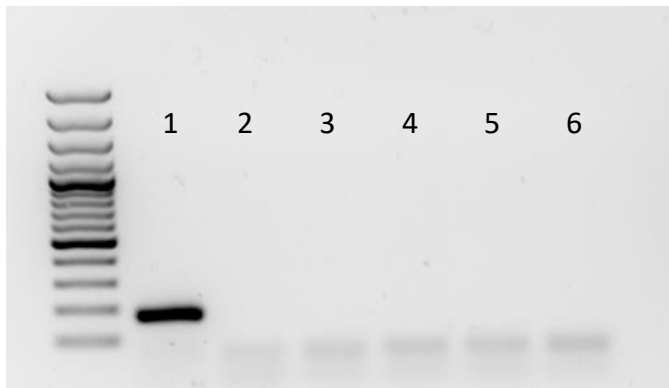


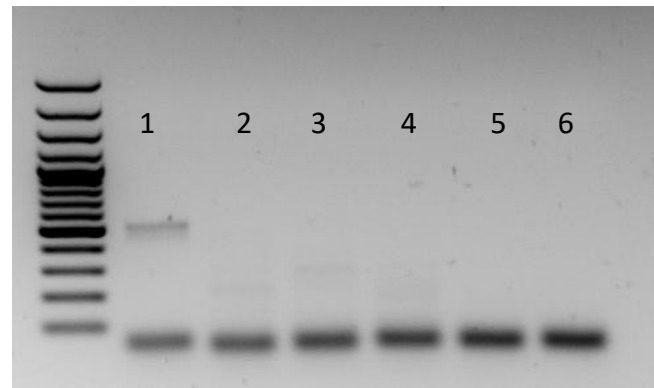
RT-PCR SENDAI 31/05/2019

1. Sendai infected CT2-PBMCs, 0,15M, 08.03.19 (positive control)
2. CT PBiPS2 Sv4F-1, P10, 24.05.19
3. CT PBiPS2 Sv4F-2, P10, 23.05.19
4. CT PBiPS2 Sv4F-6, P8, 24.05.19
5. Sample 3 without RT
6. H2O

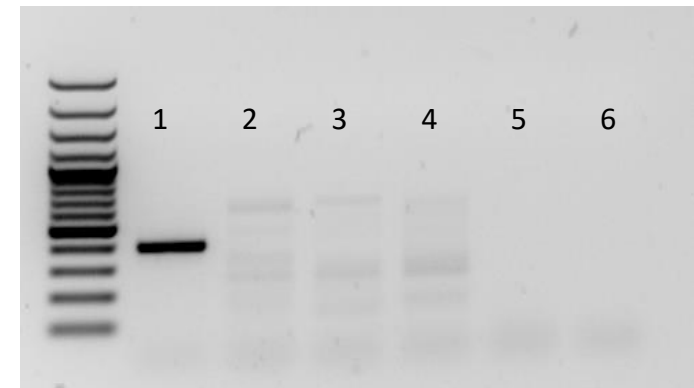
SeV (181pb)



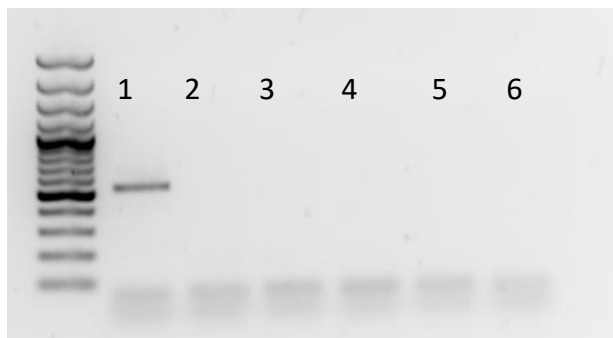
KOS (528 pb)



Klf4 (410 pb)



C-Myc (532 pb)



GAPDH

