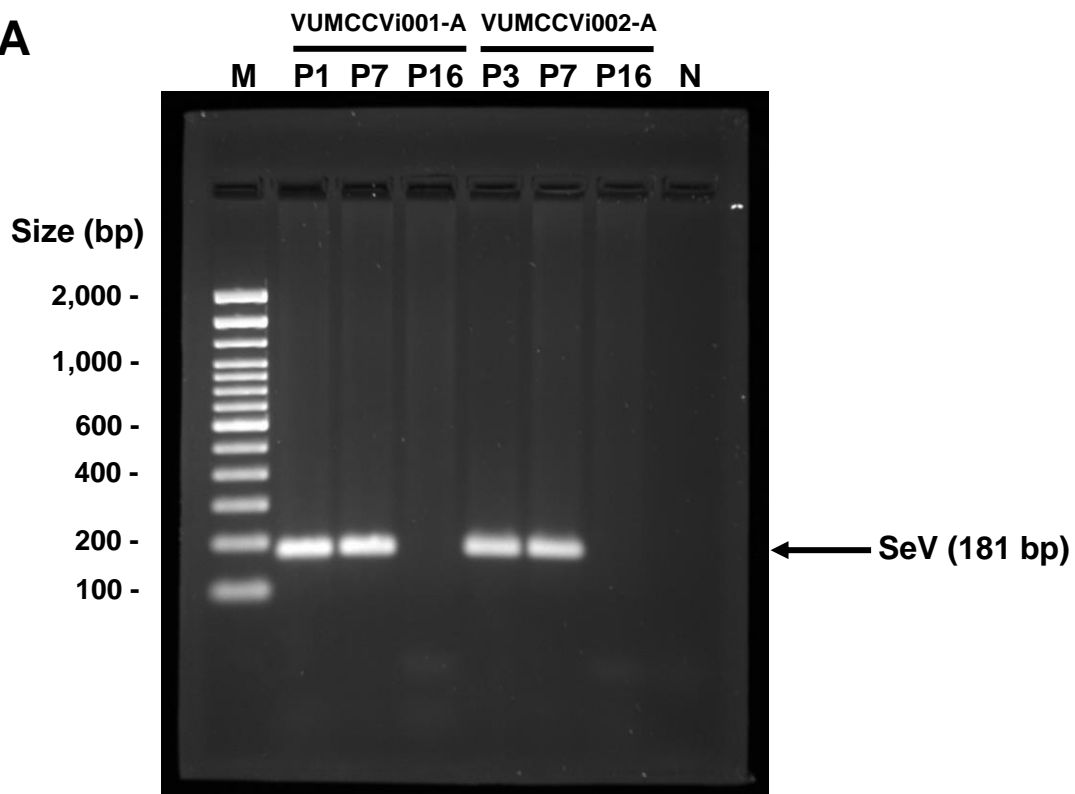
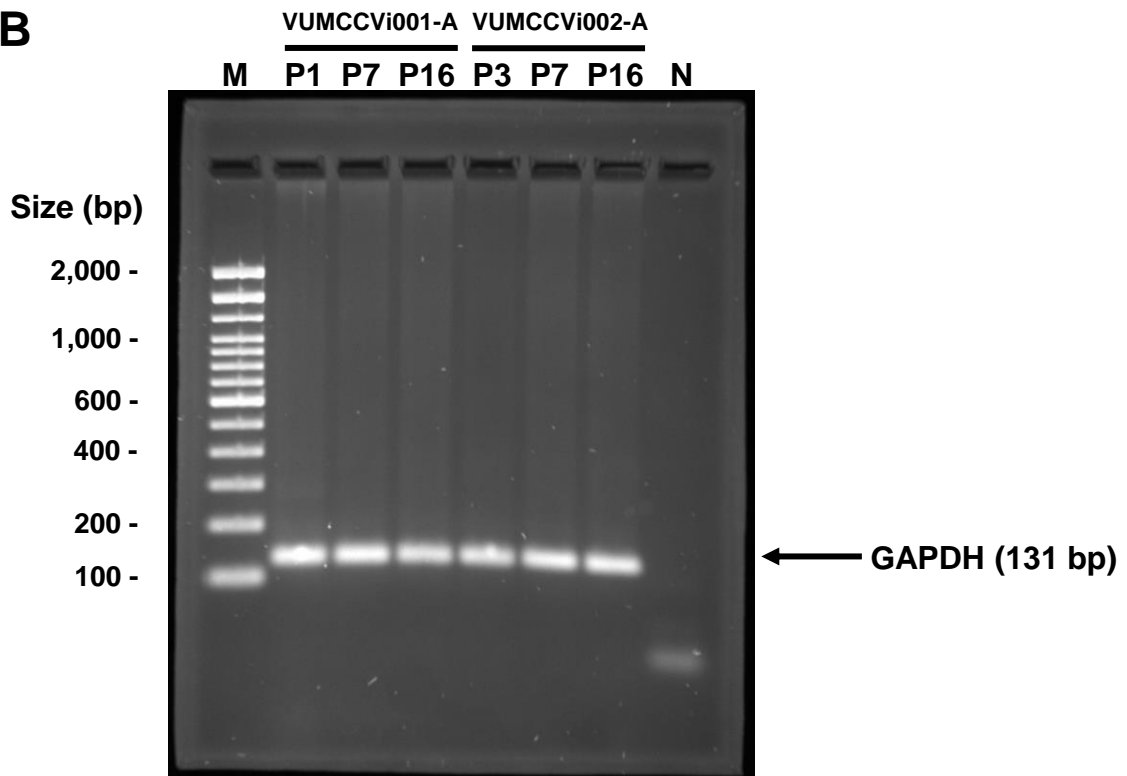


A**B**

Supplementary Figure 1. Loss of reprogramming vectors in two hiPSC lines VUMCCVi001-A and VUMCCVi002-A from young and older donors. RNAs extracted from the indicated hiPSC lines at different passages (P1, P3, P7 or P16) were subjected to RT-PCR using reprogramming vector Sendai virus (SeV)-specific primers. The housekeeping gene, glyceraldehyde 3-phosphate dehydrogenase (GAPDH), served as an internal control. Primers are listed in Table 2. RT-PCR products were resolved on 2.0% agarose gel. Lane M: 100 bp DNA Ladder (Invitrogen™, Cat# 15628019); Lane N: No template control.