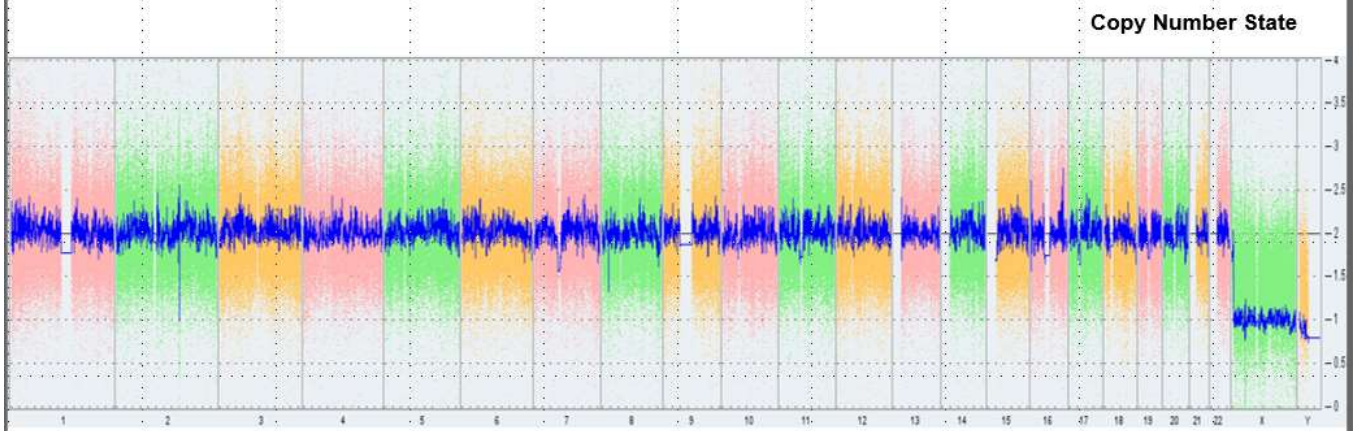


# KaryoStat+ Results: NCHi006-A

1. KaryoStat+ analysis of NCHi006-A revealed the sample originated from a male individual
2. No chromosomal aberrations were found when comparing against the reference dataset (Figure 3)



**Figure 3: Whole genome view.** The whole genome view displays all somatic and sex chromosomes in one frame with high level copy number. The smooth signal plot (right y-axis) is the smoothing of the log<sub>2</sub> ratios which depict the signal intensities of probes on the microarray. A value of 2 represents a normal copy number state (CN = 2). A value of 3 represents chromosomal gain (CN = 3). A value of 1 represents a chromosomal loss (CN = 1). The pink, green and yellow colors indicate the raw signal for each individual chromosome probe, while the blue signal represents the normalized probe signal which is used to identify copy number and aberrations (if any).\*

*Disclaimer: This assay was conducted solely for the listed investigator/institution. The results of this assay are for research use only.*

