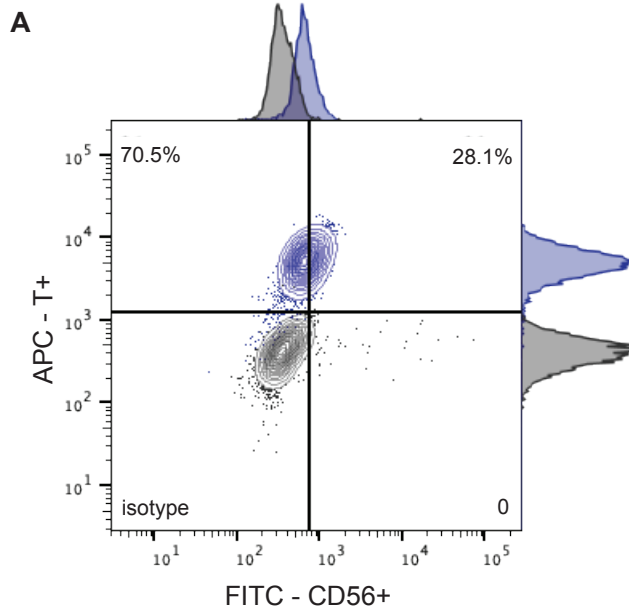
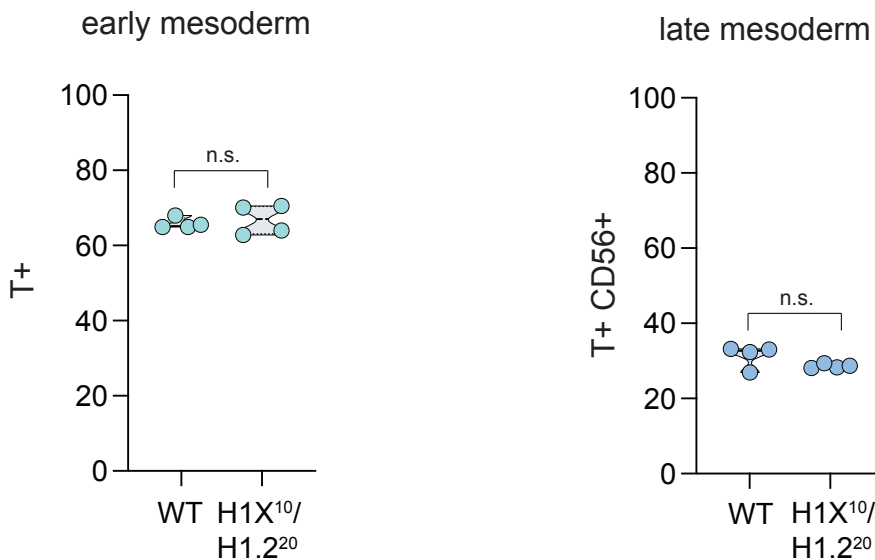


H1X¹⁰/H1.2²⁰ mesoderm FACS analysis



B



Flow cytometry analysis of direct mesodermal differentiation of linker histones H1X/H1.2 hESC double knockout cells (clones 10/20: H1X¹⁰/H1.2²⁰).

(A) Contour plot of the population distribution and percentage of cells positive for brachyury (T+) and CD56+. Isotype staining was performed as control. Result of a representative experiment is shown.

(B) Quantification of cell populations from (A) with T+ cells representing early mesoderm (left) and T+/CD56+ cells representing late mesoderm (right). Truncated violin plot is shown. n=4 corresponding to two independent biological replicates (independent cell differentiation) and two technical replicates (FACS analysis). Black line denotes the mean; the p-values were determined by two tailed unpaired t-test * p<0.05, ** p<0.01, *** p<0.001.