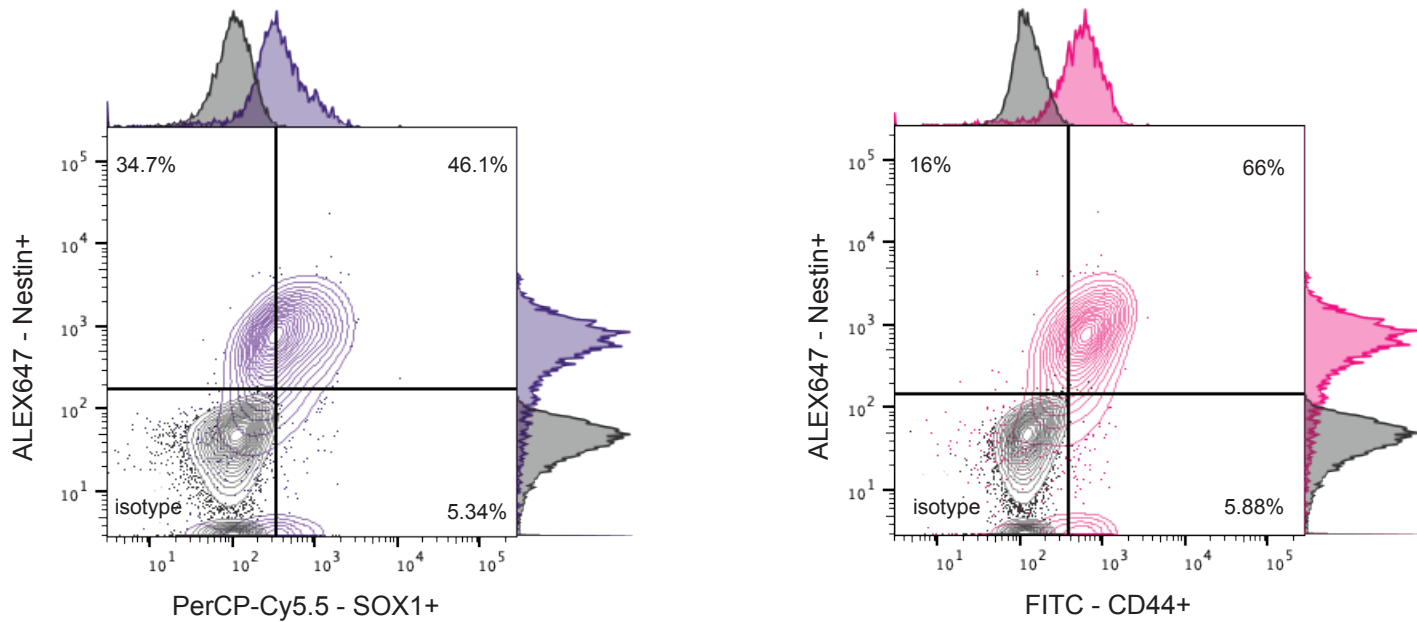
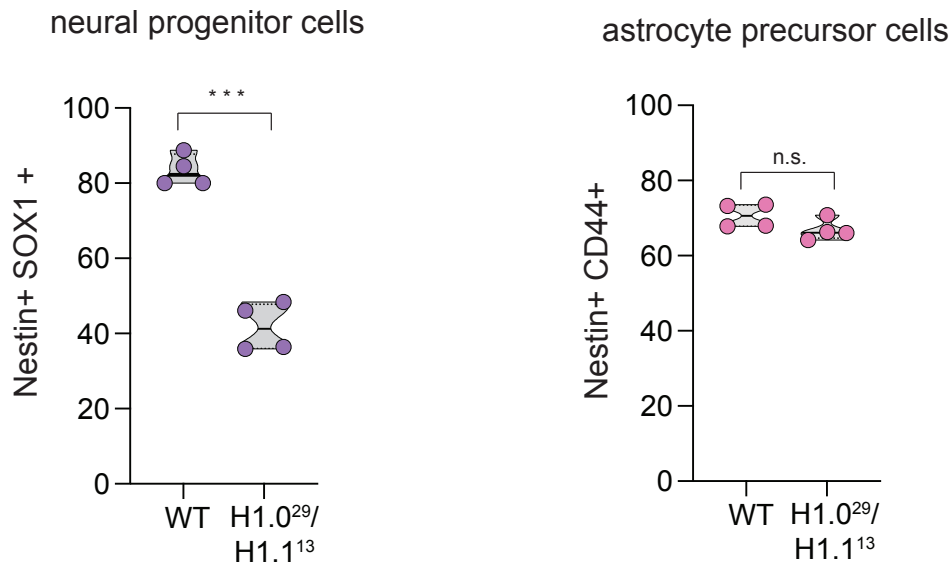


## H1.0<sup>29</sup>/H1.1<sup>13</sup> ectoderm FACS analysis

**A**



**B**



## Flow cytometry analysis of direct ectodermal differentiation of linker histones H1.0/H1.1 hESC double knockout cells (clone 29/13: H1.0<sup>29</sup>/H1.1<sup>13</sup>).

**(A)** Contour plot of the population distribution and percentage of Nestin+/SOX1+ (left) and Nestin+/CD44+ cells (right). Isotype staining was performed as control. Result of a representative experiment is shown.

**(B)** Quantification of cell populations from (A) with Nestin+/SOX1+ cells representing neural progenitor cells (left) and Nestin+/CD44+ representing astrocyte precursor cells (right). Truncated violin plot is shown. n=4 corresponding to two independent biological replicates (independent cell differentiation) and two technical replicates (FACS analysis). Black line denotes the mean; the p-values were determined by two-tailed unpaired t-test \* p < 0.05, \*\* p < 0.01, \*\*\* p < 0.001.