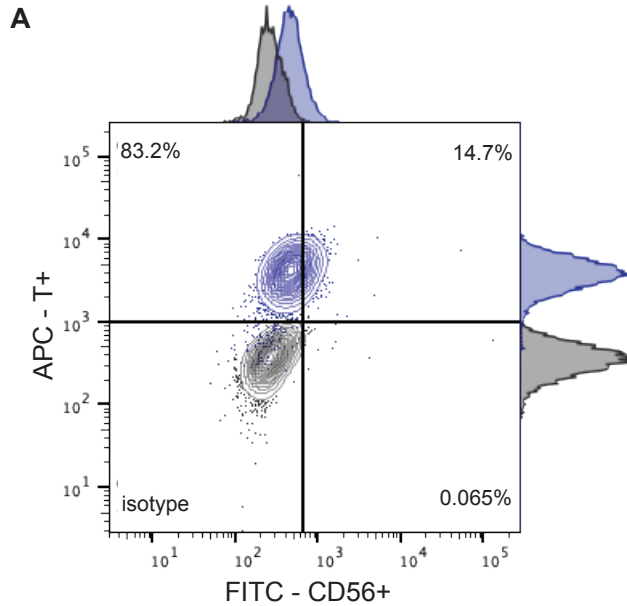
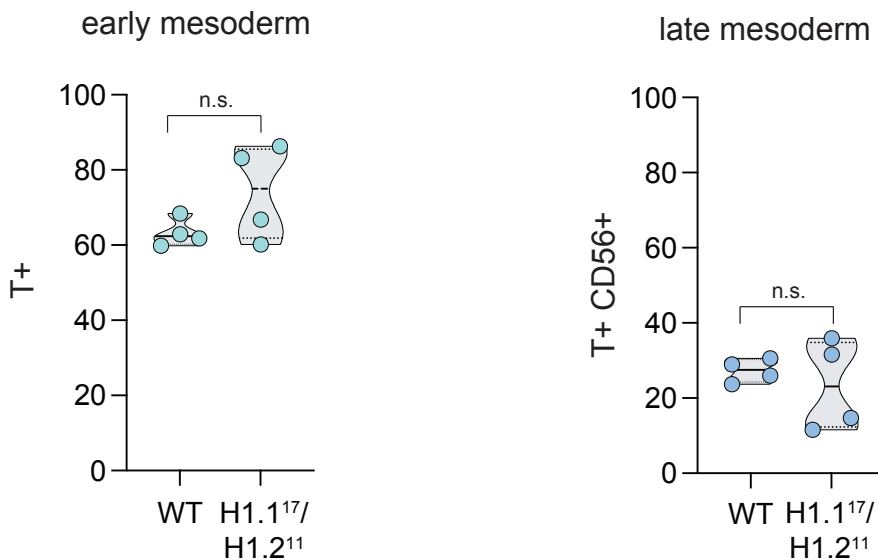


## H1.1<sup>17</sup>/H1.2<sup>11</sup> mesoderm FACS analysis



**B**



### Flow cytometry analysis of direct mesodermal differentiation of linker histones H1.1/H1.2 hESC double knockout cells (clone 17/11: H1.1<sup>17</sup>/H1.2<sup>11</sup>).

(A) Contour plot of the population distribution and percentage of cells positive for brachyury (T+) and CD56+. Isotype staining was performed as control. Result of a representative experiment is shown.

(B) Quantification of cell populations from (A) with T+ cells representing early mesoderm (left) and T+/CD56+ cells representing late mesoderm (right). Truncated violin plot is shown. n=4 corresponding to two independent biological replicates (independent cell differentiation) and two technical replicates (FACS analysis). Black line denotes the mean; the p-values were determined by two tailed unpaired t-test \* p<0.05, \*\* p<0.01, \*\*\* p<0.001.