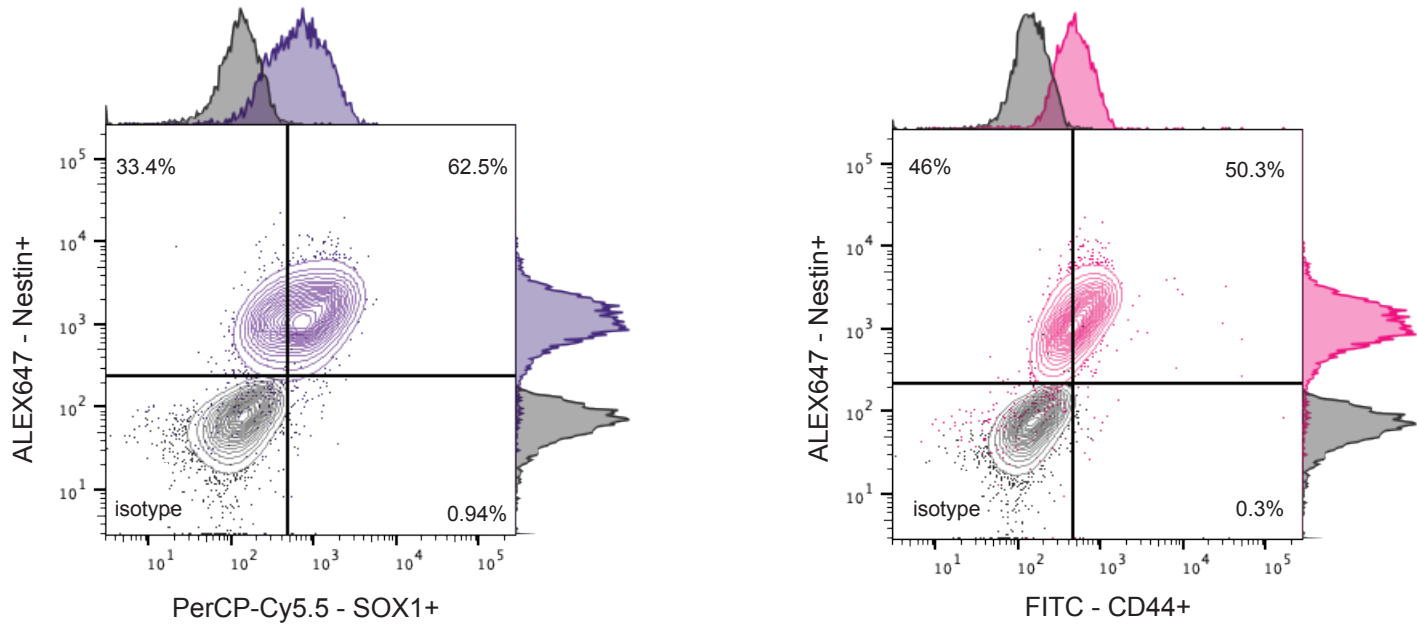
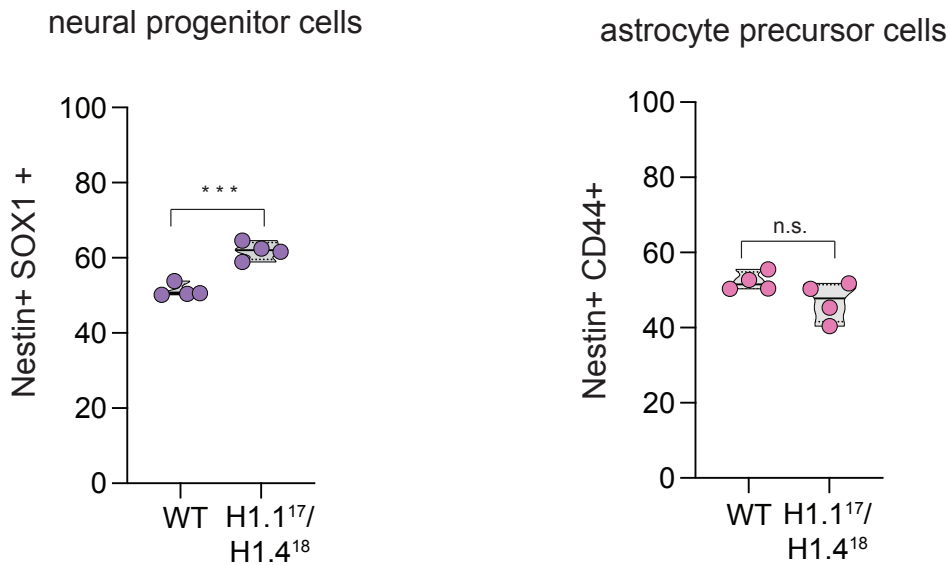


## H1.1<sup>17</sup>/H1.4<sup>18</sup> ectoderm FACS analysis

**A**



**B**



### Flow cytometry analysis of direct ectodermal differentiation of linker histones H1.1/H1.4 hESC double knockout cells (clone 17/18: H1.1<sup>17</sup>/H1.4<sup>18</sup>).

**(A)** Contour plot of the population distribution and percentage of Nestin+/SOX1+ (left) and Nestin+/CD44+ cells (right). Isotype staining was performed as control. Result of a representative experiment is shown.

**(B)** Quantification of cell populations from (A) with Nestin+/SOX1+ cells representing neural progenitor cells (left) and Nestin+/CD44+ representing astrocyte precursor cells (right). Truncated violin plot is shown. n=4 corresponding to two independent biological replicates (independent cell differentiation) and two technical replicates (FACS analysis). Black line denotes the mean; the p-values were determined by two tailed unpaired t-test \* p<0.05, \*\* p<0.01, \*\*\* p<0.001.