

SCVi075A

SCVi076A

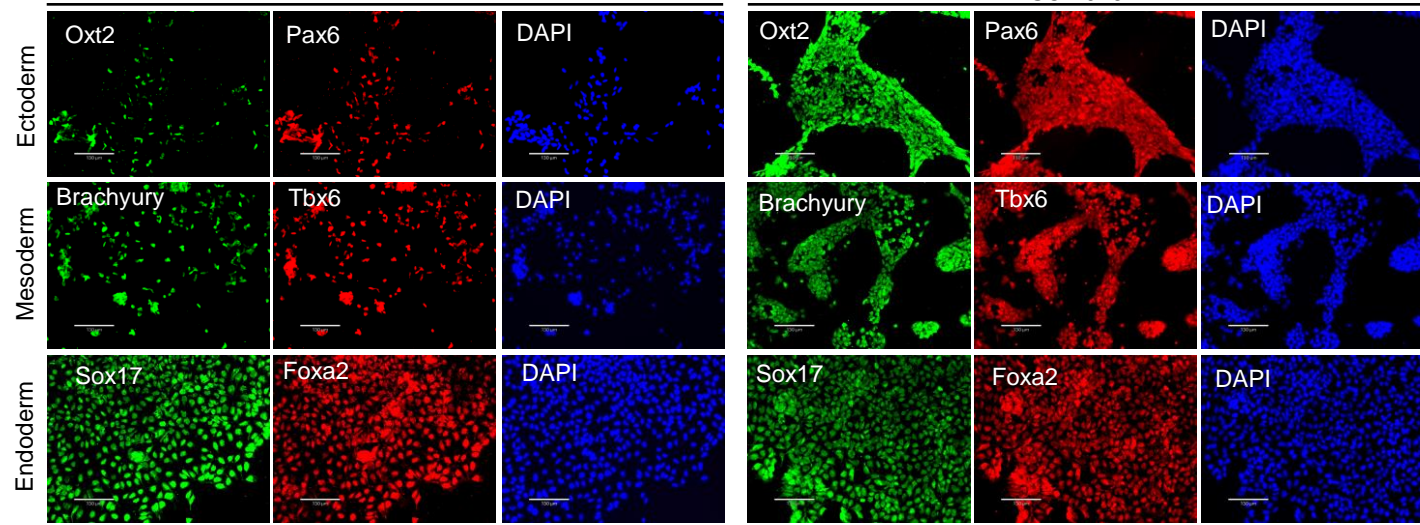


Figure legend: Endoderm differentiation from iPSCs were induced with the StemDiff™ Definitive Endoderm Differentiation Kit (STEMCELL™ Technologies, Cat# 05110). Ectoderm differentiation was induced with the Human Pluripotent Stem Cell Functional Identification Kit (R&D Systems, Cat# SC027B). Mesoderm differentiation was induced by adding 6  $\mu$ M CHIR (Selleck Chemicals, Cat# S2924) dissolved in RPMI media supplemented with B27 supplement Minus Insulin (Gibco, Cat# 11875-085 and Cat# A18956-01) for 48 hr. Then the cells were stained by specific markers, Oxt2 and Pax6 (Ectoderm), Brachyury and Tbx6 (Mesoderm), Sox17 and Foxa2 (Endoderm). Nuclei were stained by DAPI.