

Characterization of RUCDRi002-A-63 for stemness by RT-PCR, Immunocytochemistry and FACS

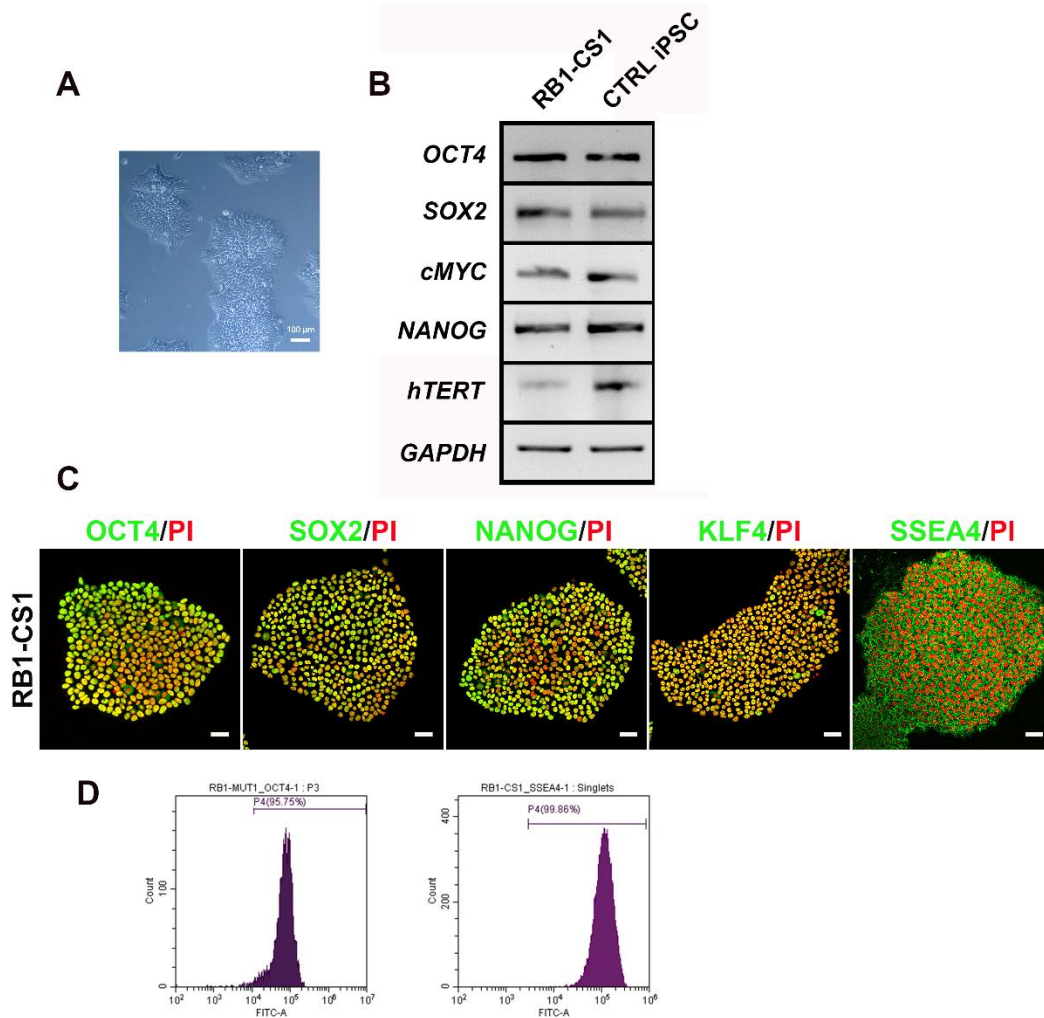


Figure: Characterization of RUCDRi002-A-63 for stemness: (A) Phase contrast image of well-established iPSC clonal line, RUCDRi002-A-63 at passage 10; (B) RT-PCR profiles of endogenous gene specific amplicons confirmed the expression of stemness promoting gene transcripts namely, *OCT4*, *SOX2*, *cMYC*, *NANOG* and *hTERT*, at levels comparable to that of control iPSC line, RUCDRi002-A; (C) Confocal images of the immunolabelled iPSCs showing the expression of stemness markers OCT4, SOX2, NANOG, KLF4 and SSEA4 (in green). The cells are counterstained with DAPI (in blue); Scale bar: 50 μ m. (D) FACS analysis confirmed that >95% of cells were positive for stemness marker OCT4 and >99% of cells were positive for SSEA4 in the iPSC line RUCDRi002-A-63.