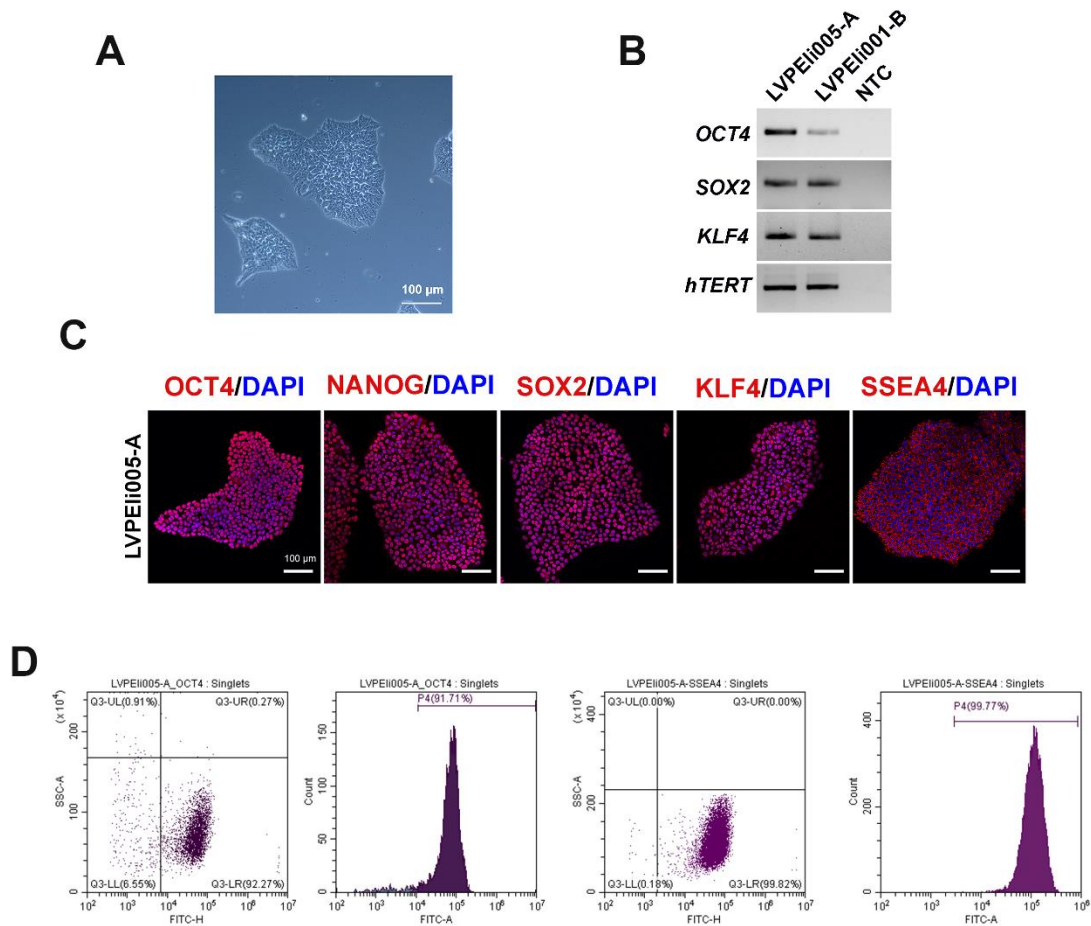


## Characterization of LVPEIi005-A for stemness by RT-PCR, Immunocytochemistry and FACS



**Figure: Characterization of LVPEIi005-A for stemness:** (A) Phase contrast image of well-established iPSC clonal line, LVPEIi005-A at passage 10; (B) RT-PCR profiles of endogenous gene specific amplicons confirmed the expression of stemness promoting gene transcripts namely, *OCT4*, *SOX2*, *KLF4* and *hTERT*, at levels comparable to that of control iPSC line, LVPEIi002-B; (C) Confocal images of the immunolabelled iPSCs showing the expression of stemness markers *OCT4*, *SOX2*, *NANOG*, *KLF4* and *SSEA4* (in red). The cells are counterstained with *DAPI* (in blue); Scale bar: 100  $\mu$ m. (D) FACS analysis confirmed that >91% of cells are positive for stemness marker *OCT4* and >99% for *SSEA4* in the iPSC line LVPEIi005-A.