

# LUMC0195iFOXC

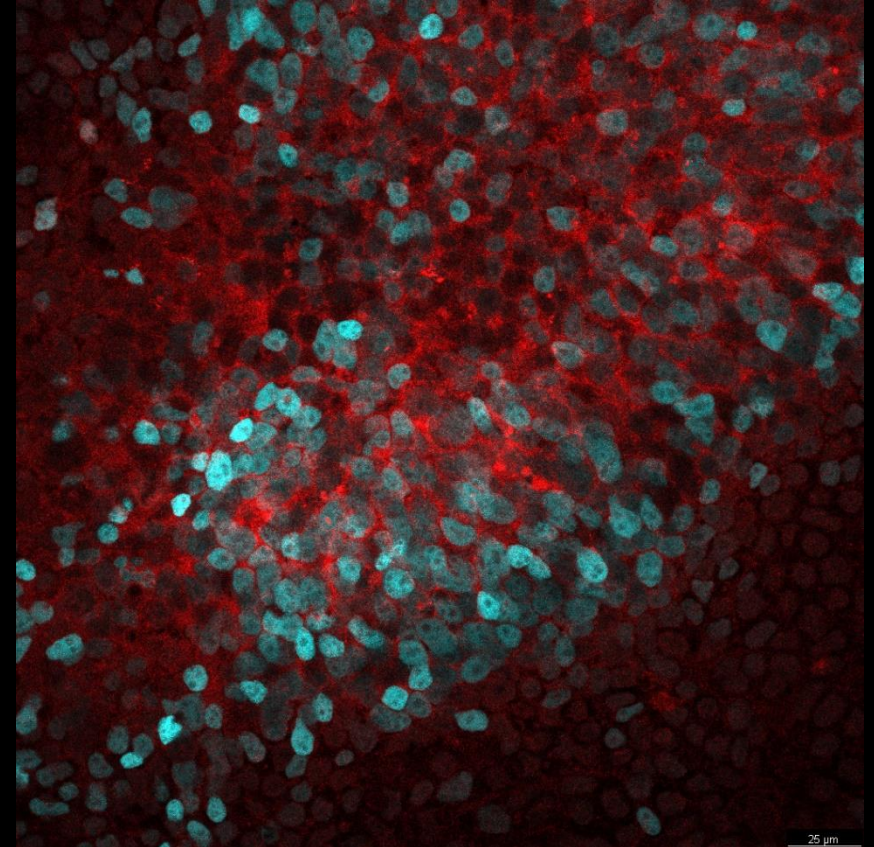
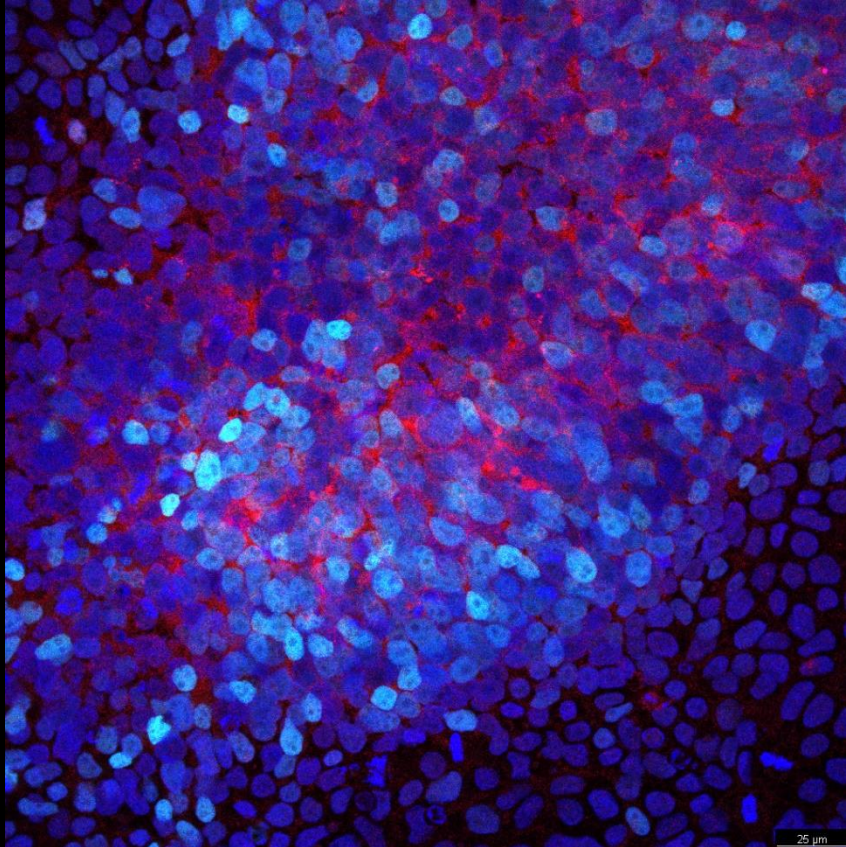
Differentiation staining(at p5) and  
Pluripotency FACS(at p5)

# LUMC0195iFOXC01

Ectoderm

FABP7 PAX6 DAPI

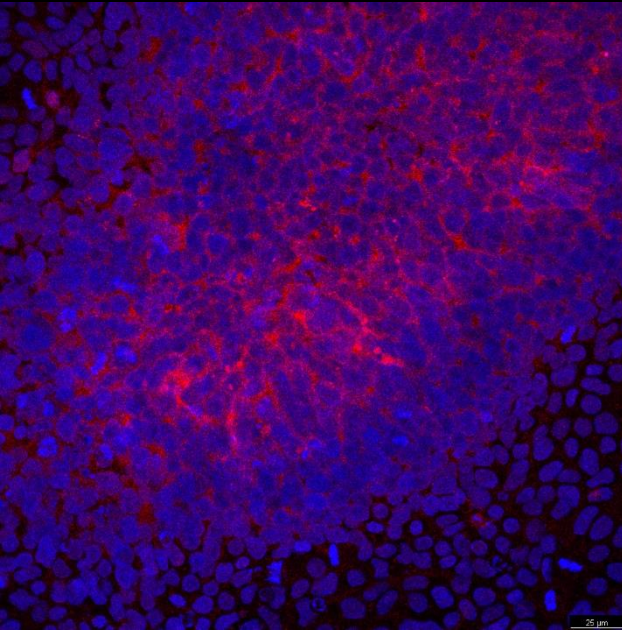
FABP7 PAX6



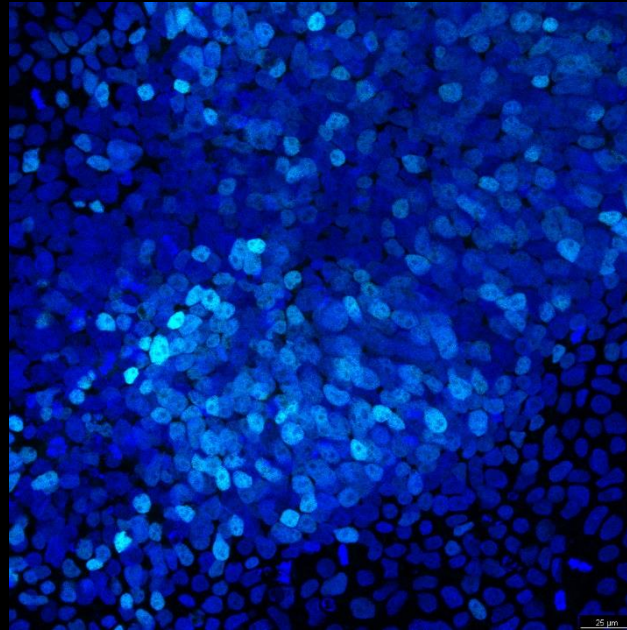
# LUMC0195iFOXC01

Ectoderm

FABP7 DAPI



PAX6 DAPI

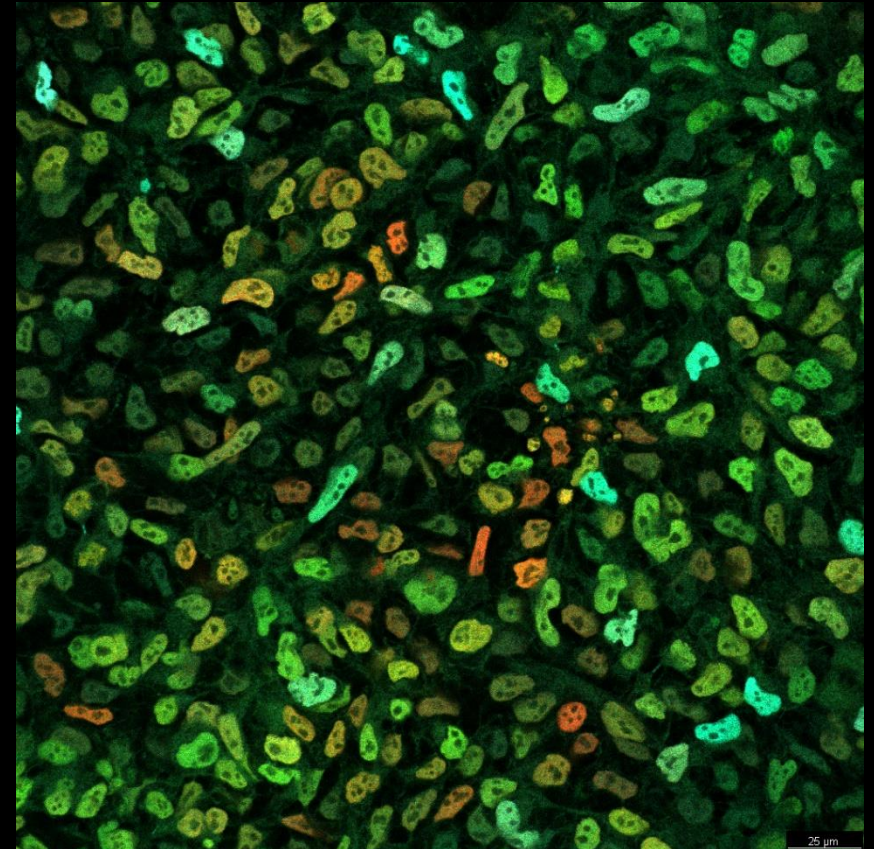
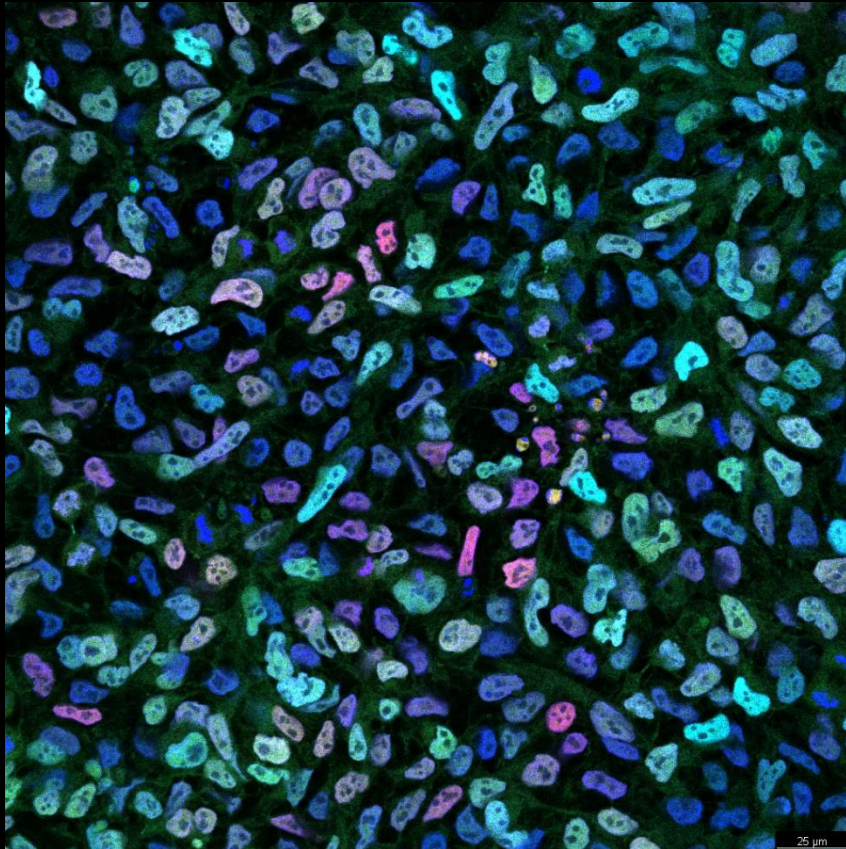


# LUMC0195iFOXC01

Endoderm

Eomes FOXA2 GATA4 DAPI

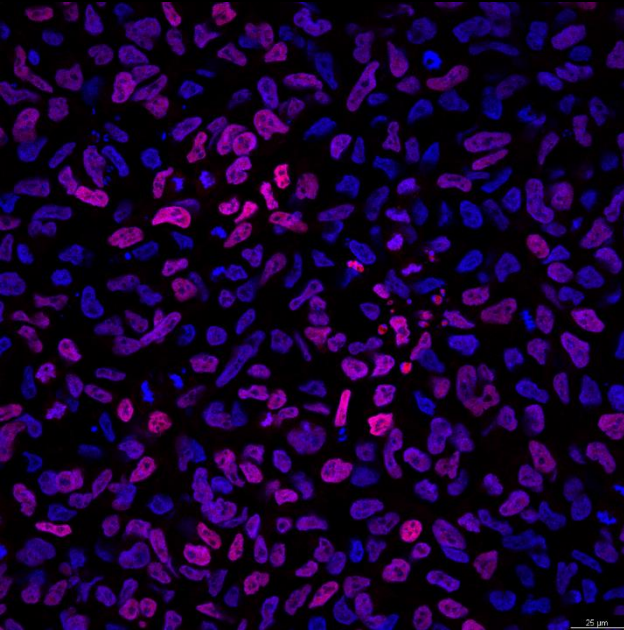
Eomes FOXA2 GATA4



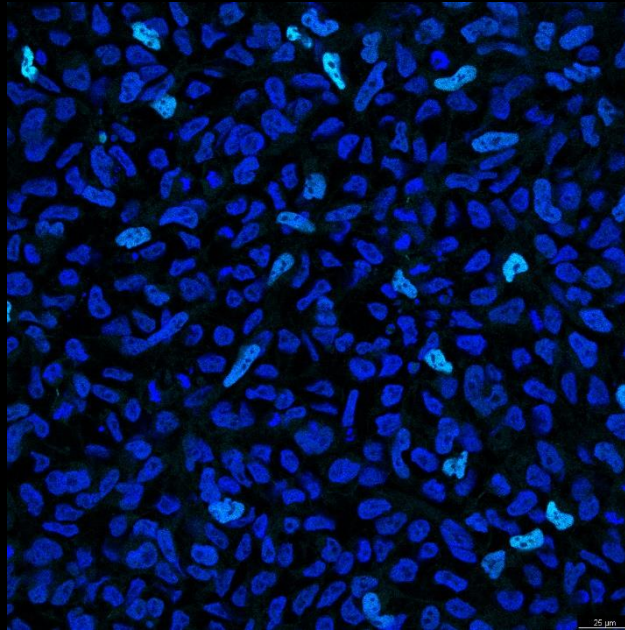
# LUMC0195iFOXC01

Endoderm

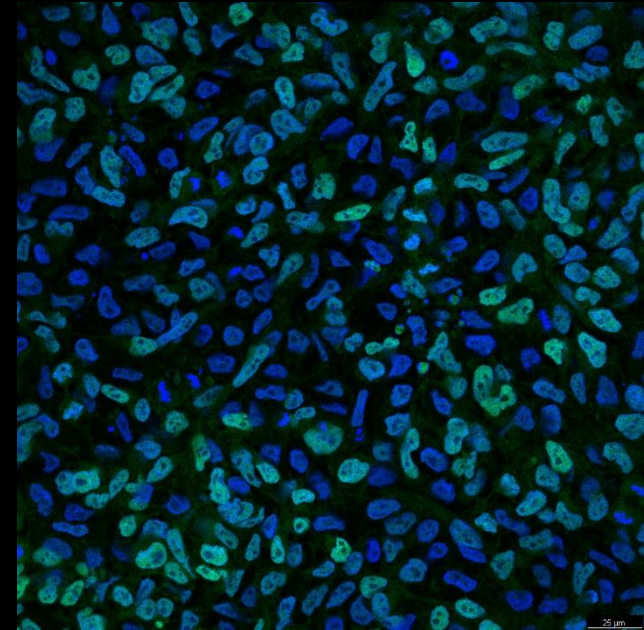
FOXA2 DAPI



GATA4 DAPI



Eomes DAPI

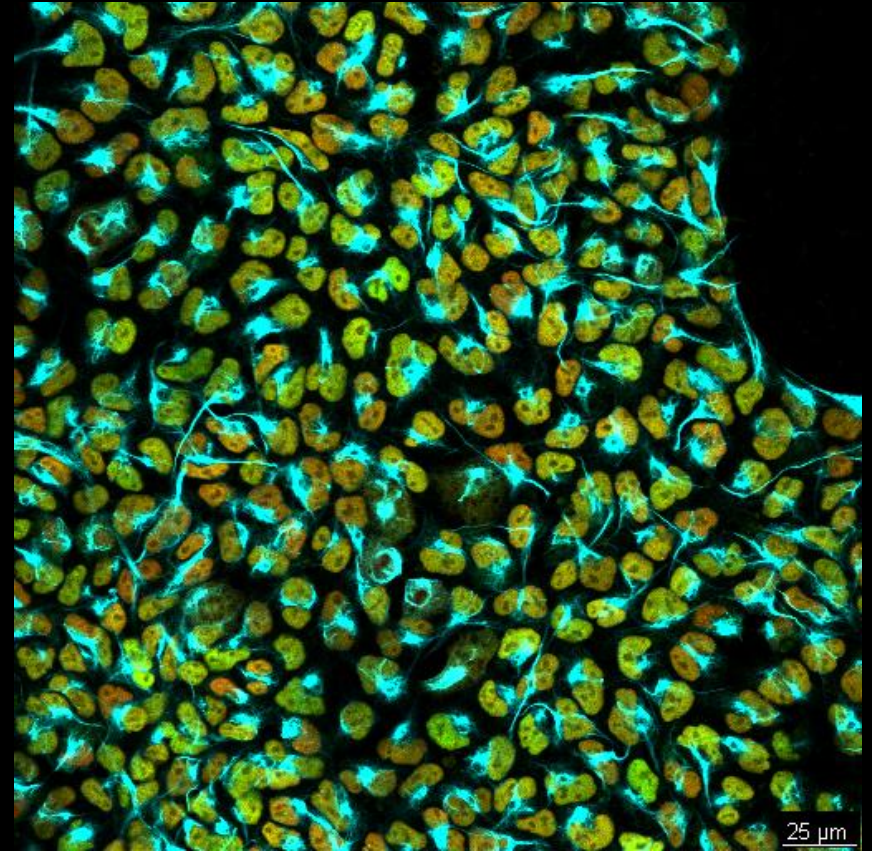
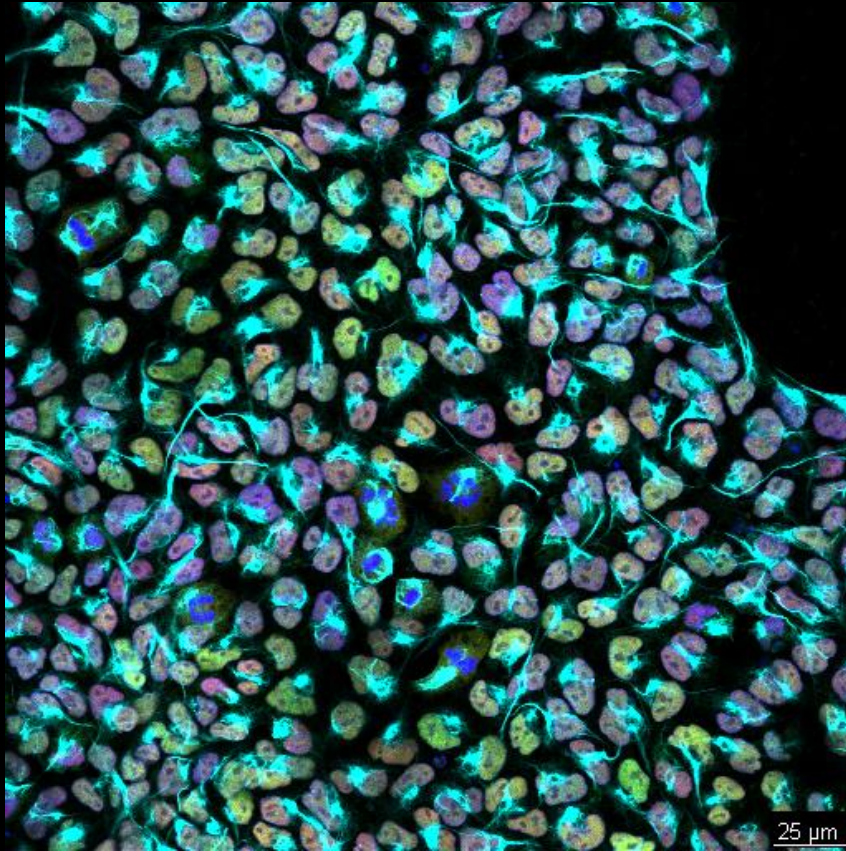


# LUMC0195iFOXC01

Mesoderm

Brachyury CDX2 Vimentin DAPI

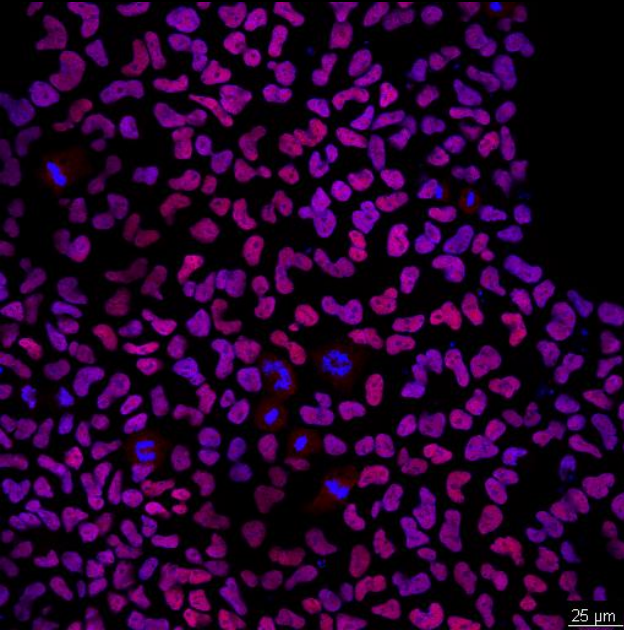
Brachyury CDX2 Vimentin



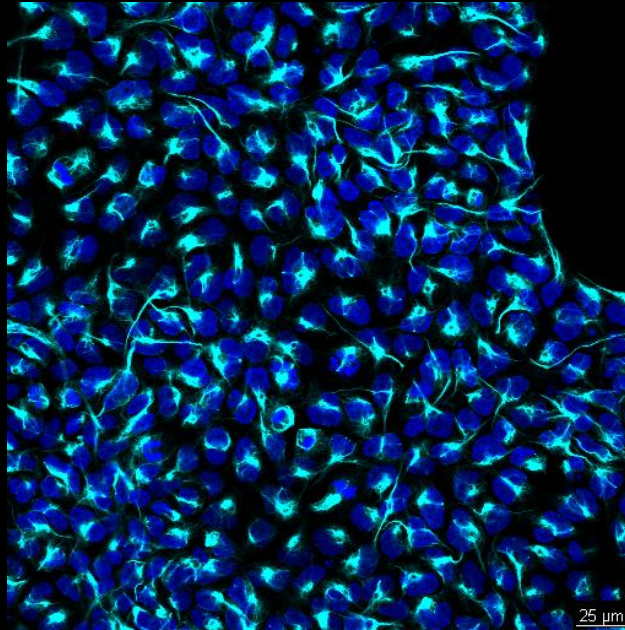
# LUMC0195iFOXC01

Mesoderm

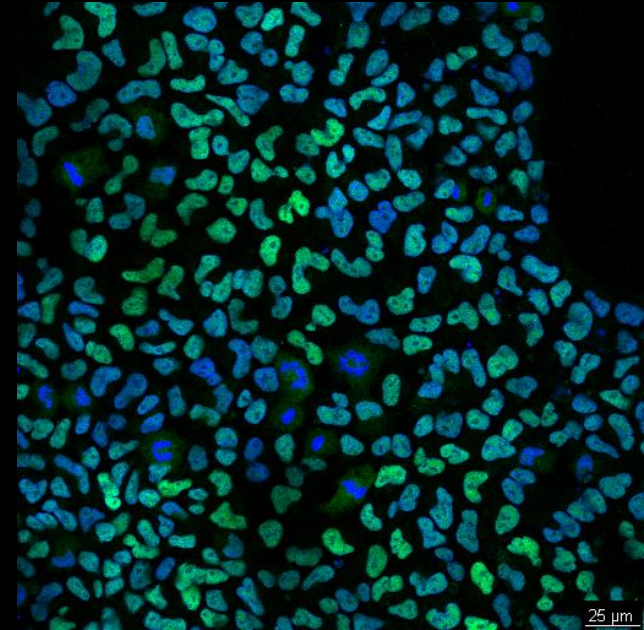
CDX2 DAPI



Vimentin DAPI



Brachyury DAPI

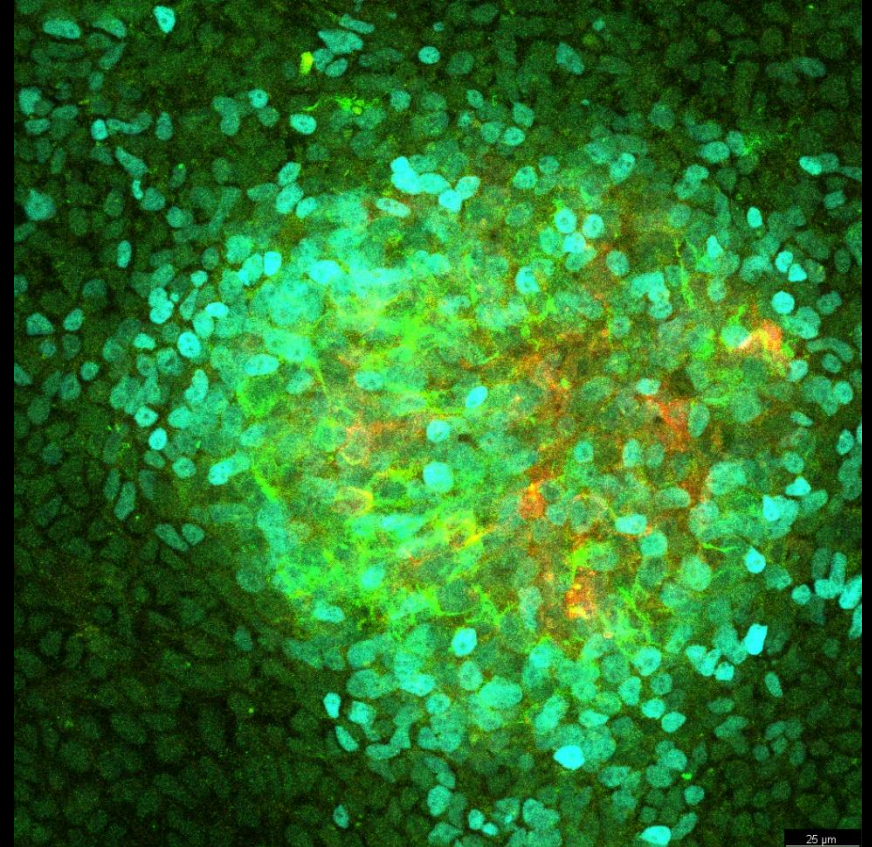
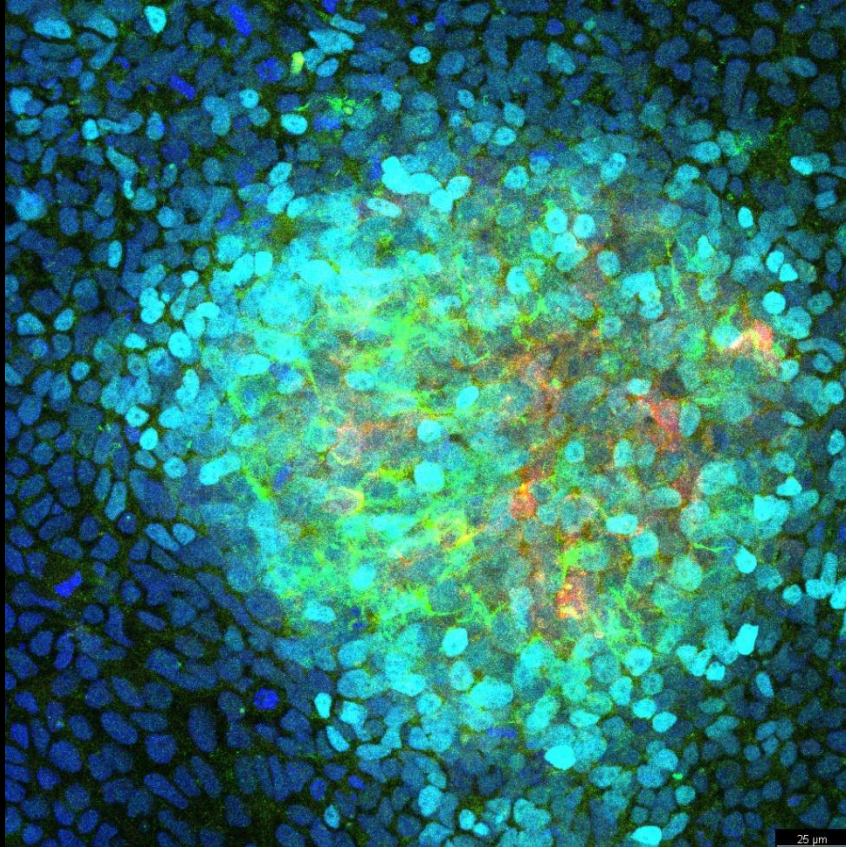


# LUMC0195iFOXC03

Ectoderm

FABP7 Nestin PAX6 DAPI

FABP7 Nestin PAX6

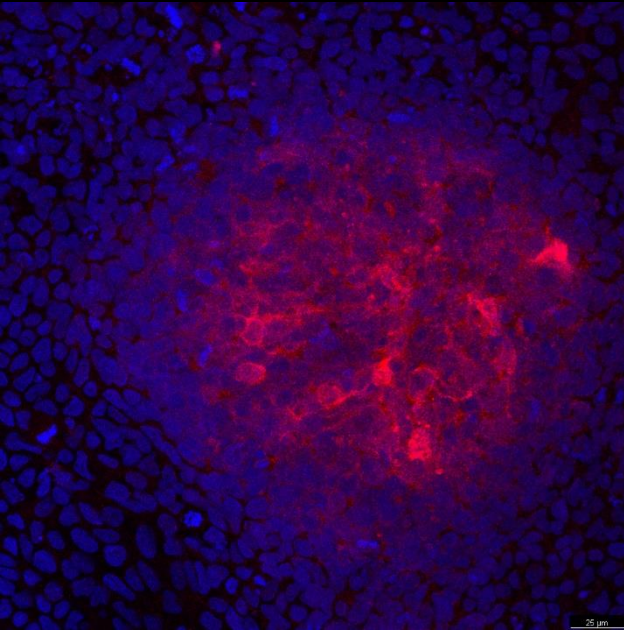




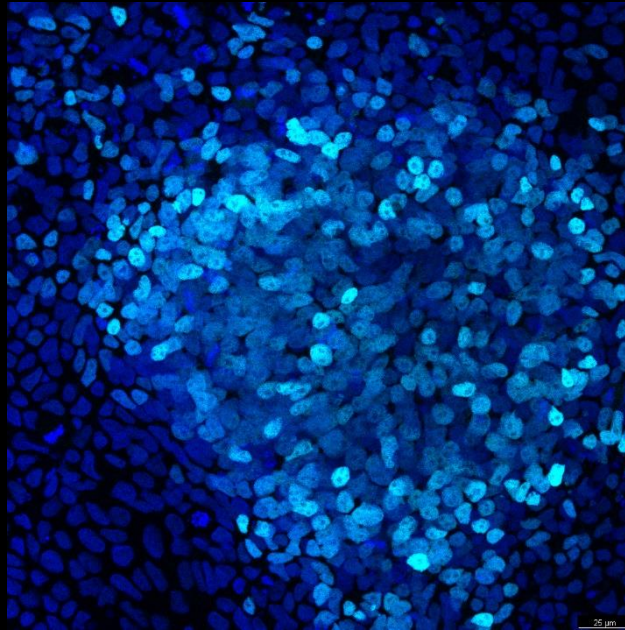
# LUMC0195iFOXC03

Ectoderm

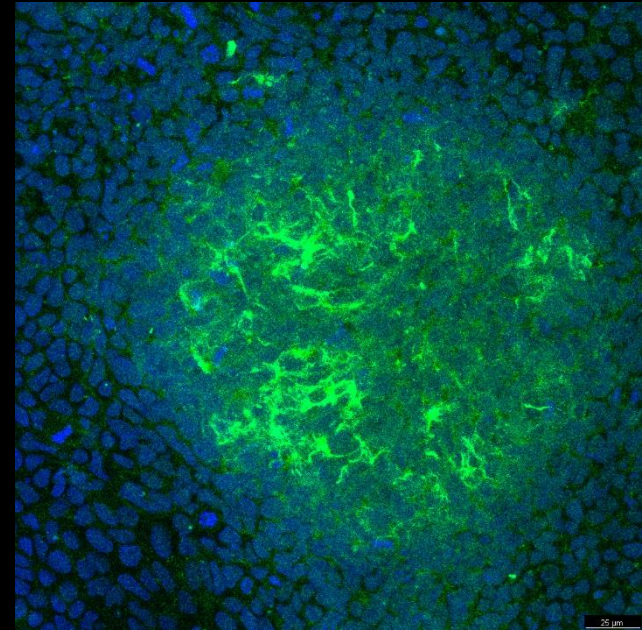
FABP7 DAPI



PAX6 DAPI



Nestin DAPI

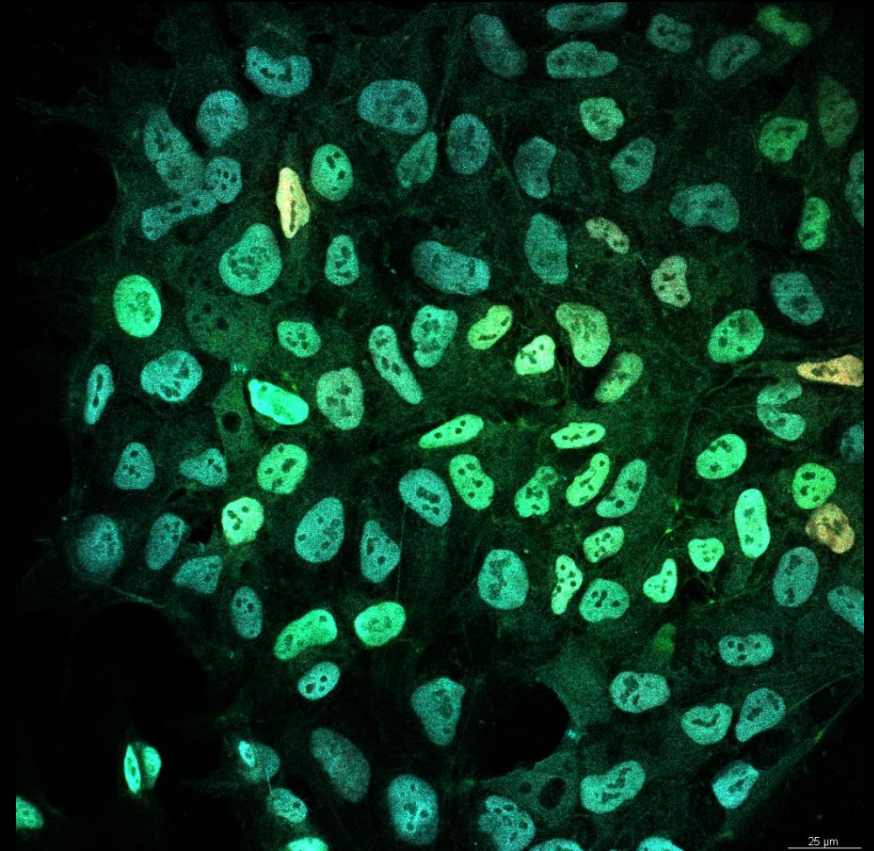
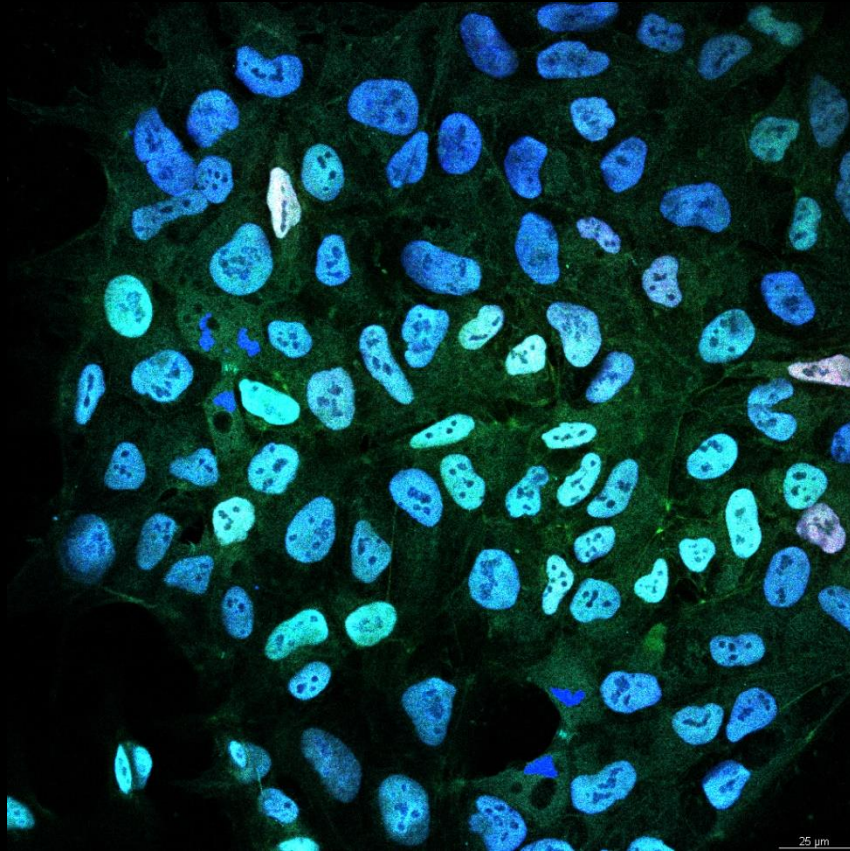


# LUMC0195iFOXC03

Endoderm

Eomes FOXA2 GATA4 DAPI

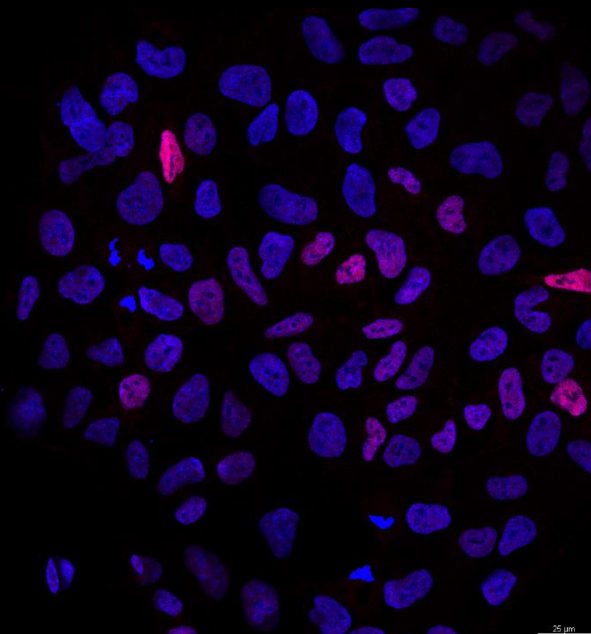
Eomes FOXA2 GATA4



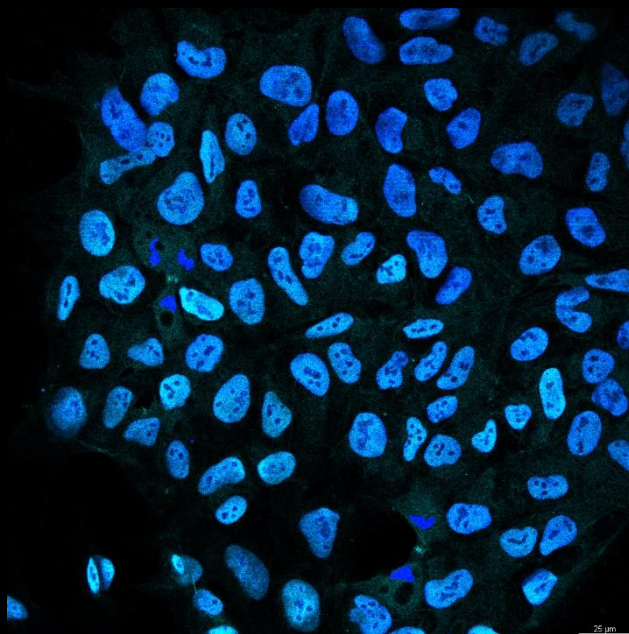
# LUMC0195iFOXC03

Endoderm

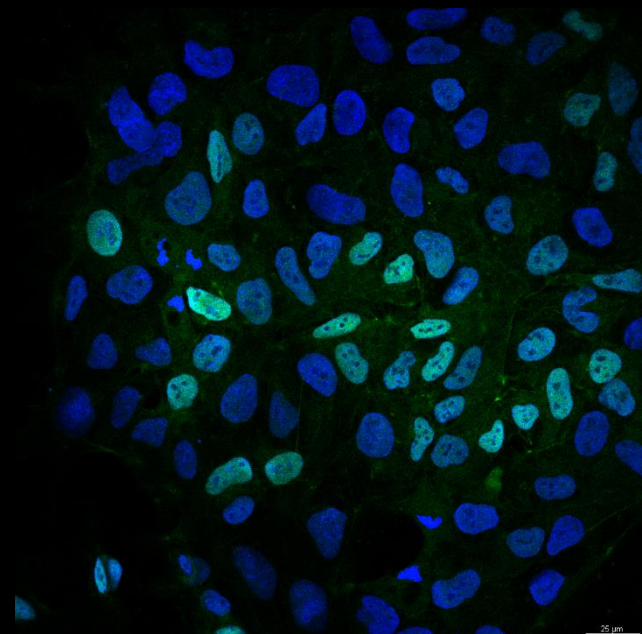
FOXA2 DAPI



GATA4 DAPI



Eomes DAPI

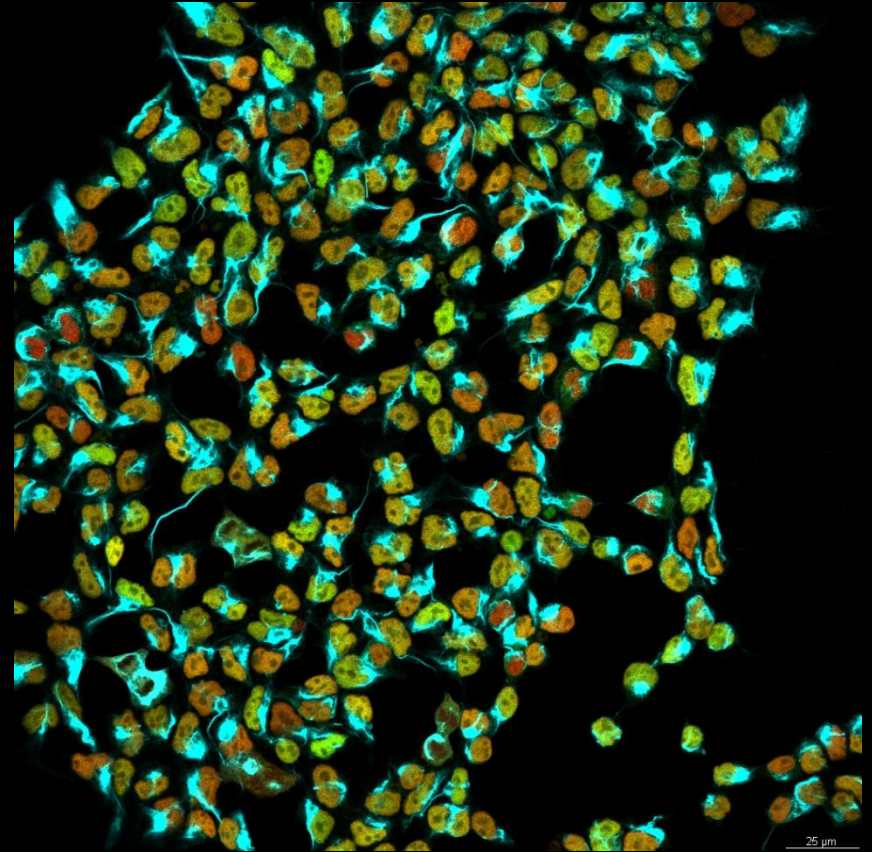
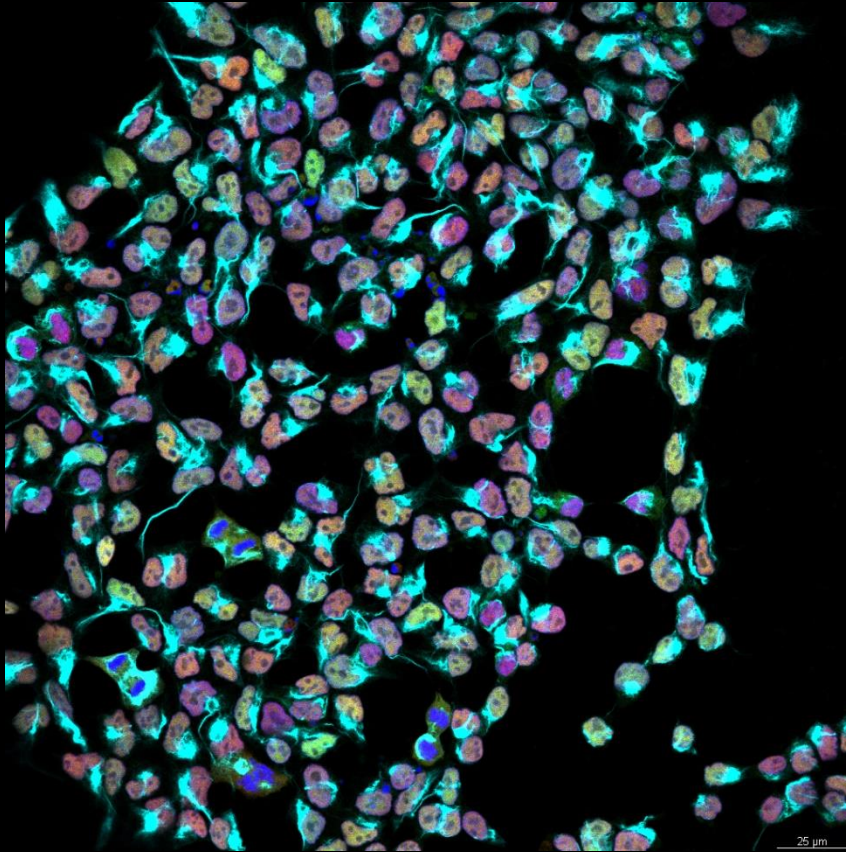


# LUMC0195iFOXC03

Mesoderm

Brachyury CDX2 Vimentin DAPI

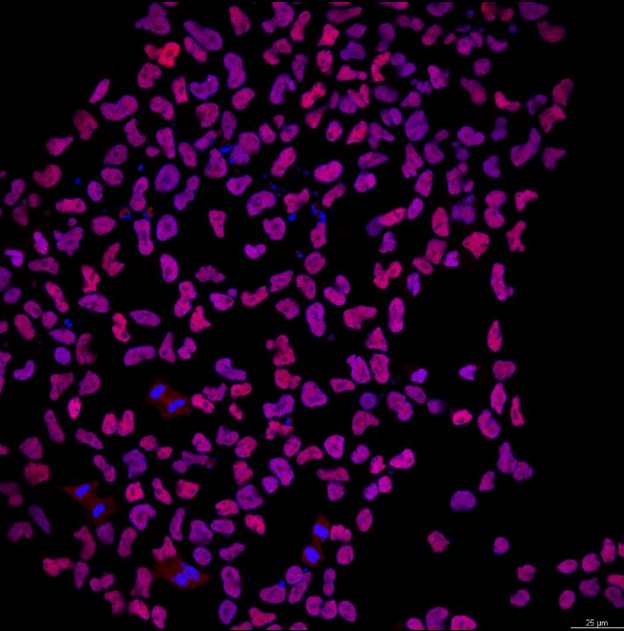
Brachyury CDX2 Vimentin



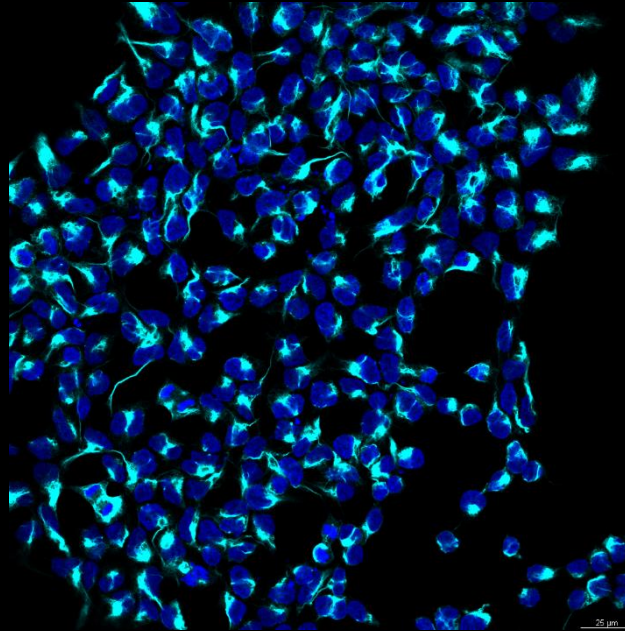
# LUMC0195iFOXC03

Mesoderm

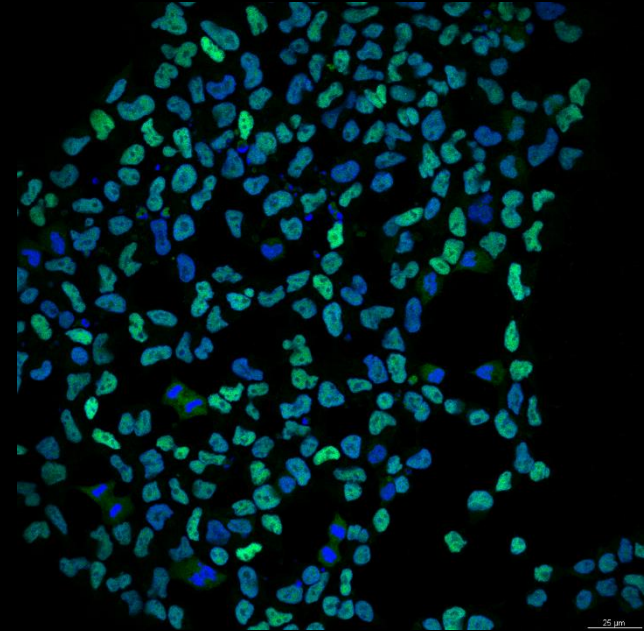
CDX2 DAPI



Vimentin DAPI



Brachyury DAPI

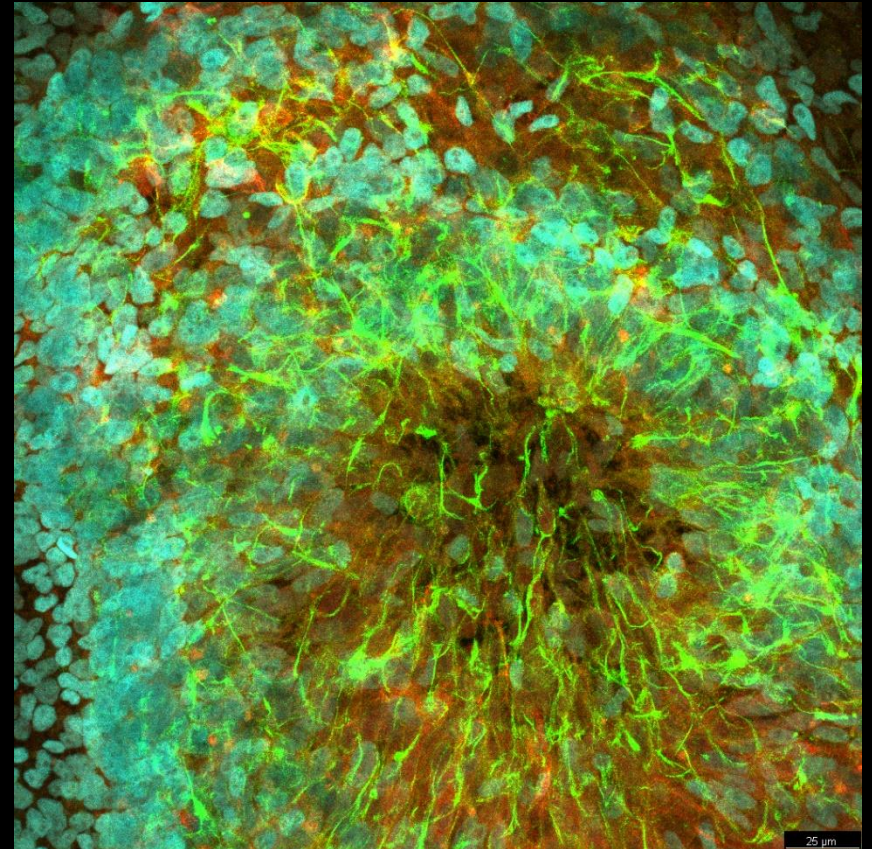
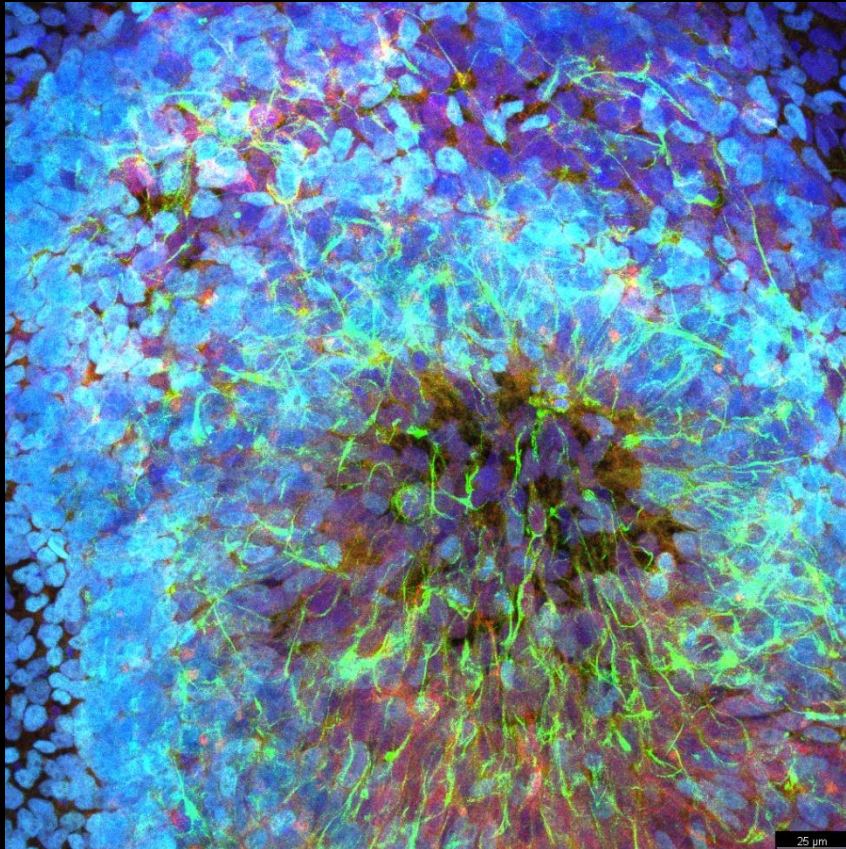


# LUMC0195iFOXC04

Ectoderm

FABP7 Nestin PAX6 DAPI

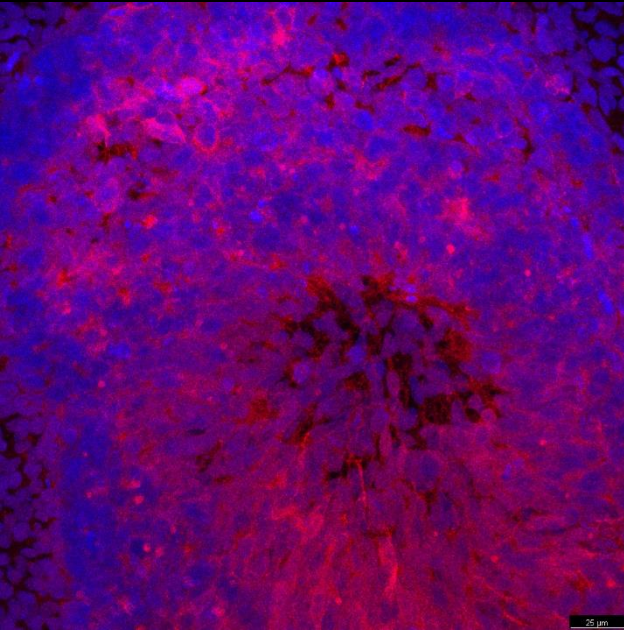
FABP7 Nestin PAX6



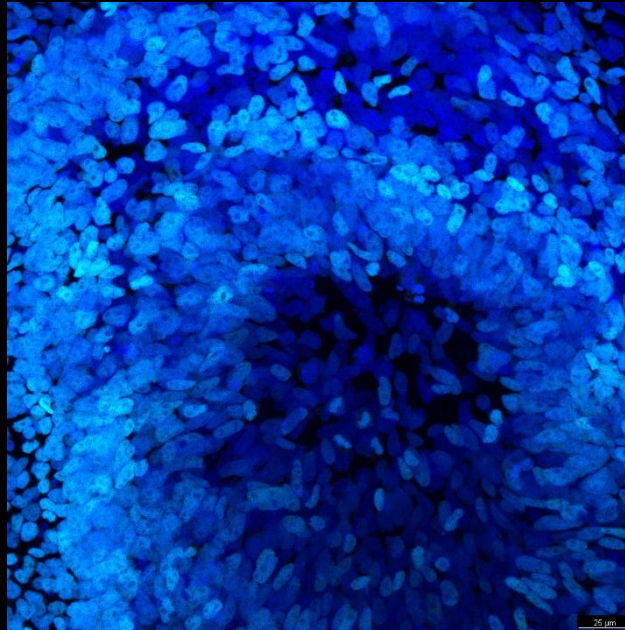
# LUMC0195iFOXC04

Ectoderm

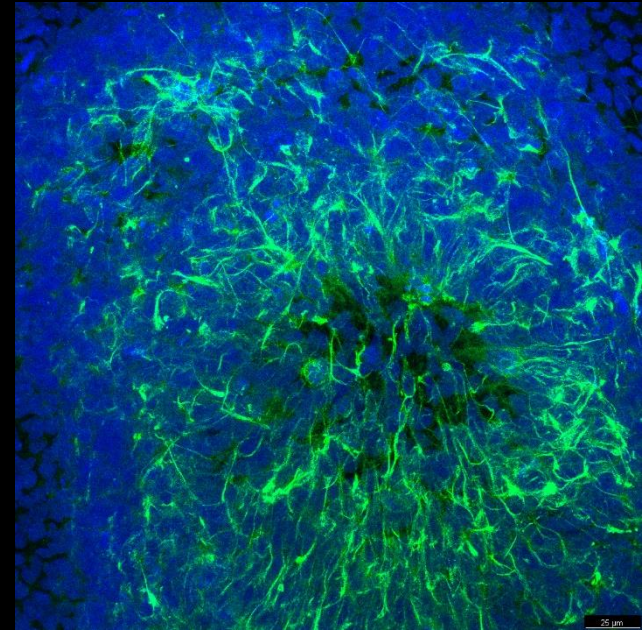
FABP7 DAPI



PAX6 DAPI



Nestin DAPI

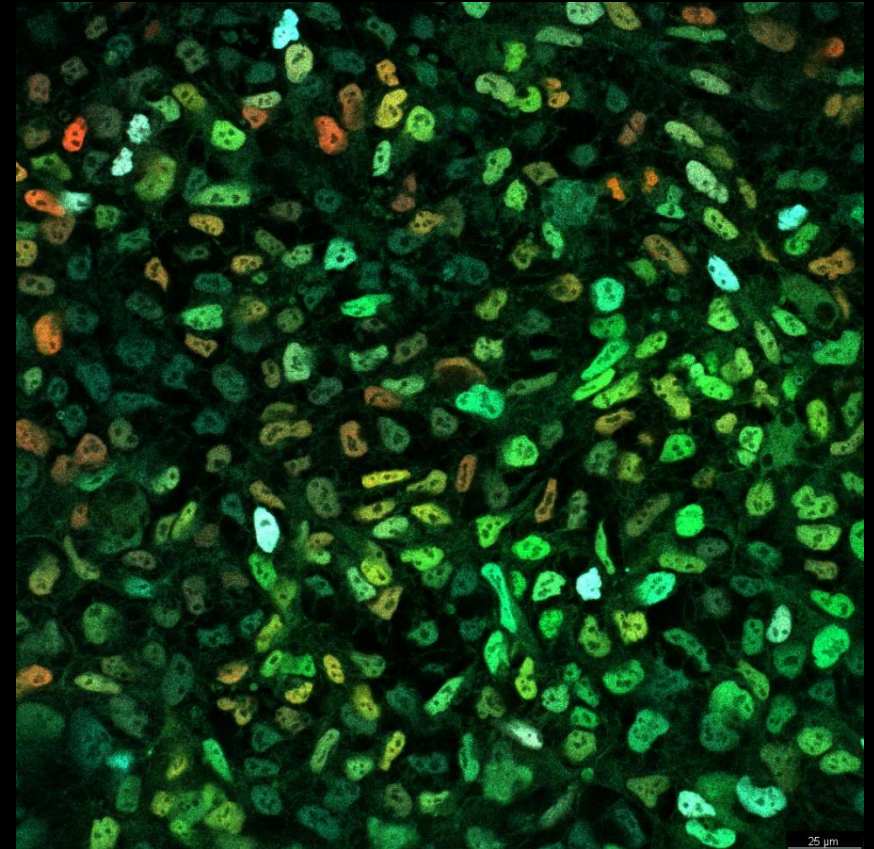
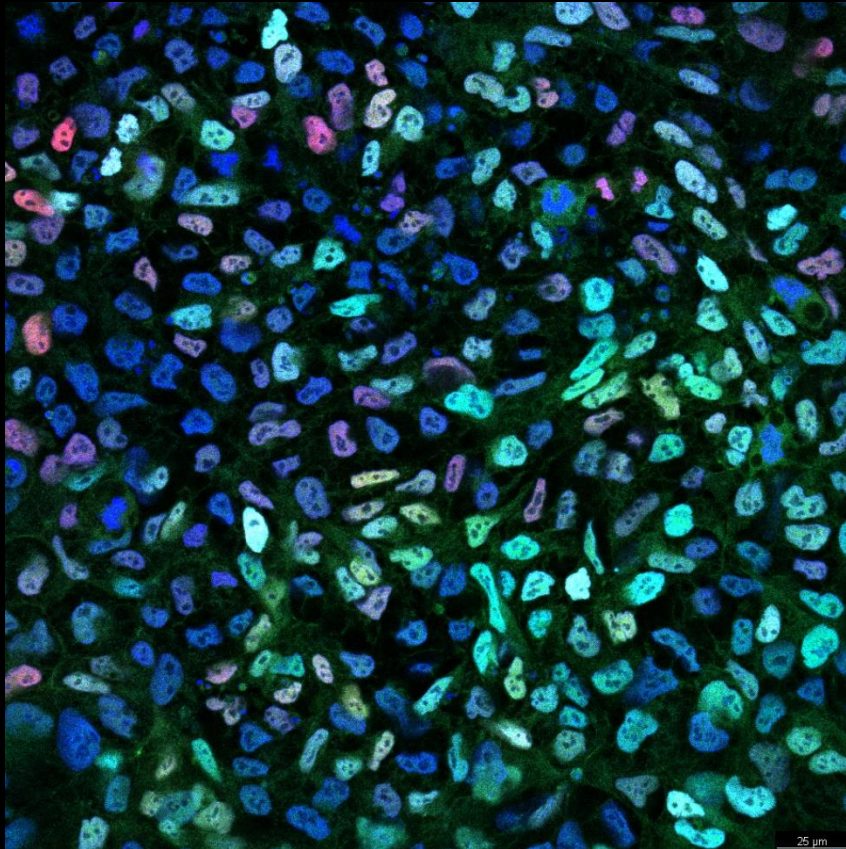


# LUMC0195iFOXC04

Endoderm

Eomes FOXA2 GATA4 DAPI

Eomes FOXA2 GATA4

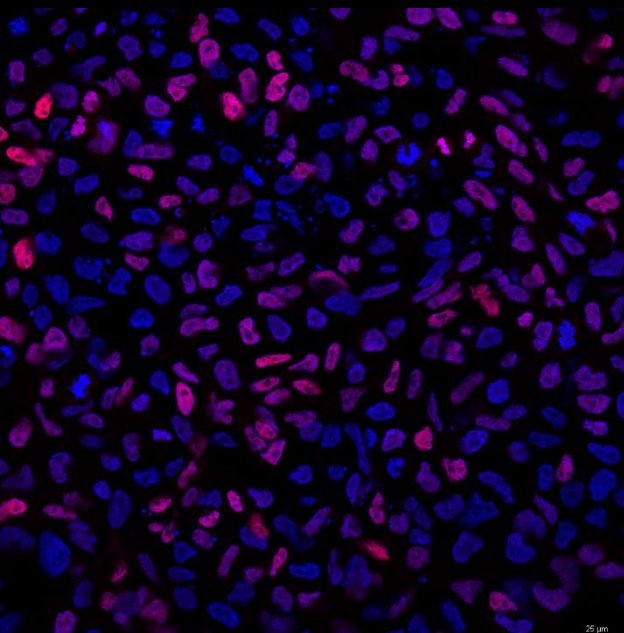




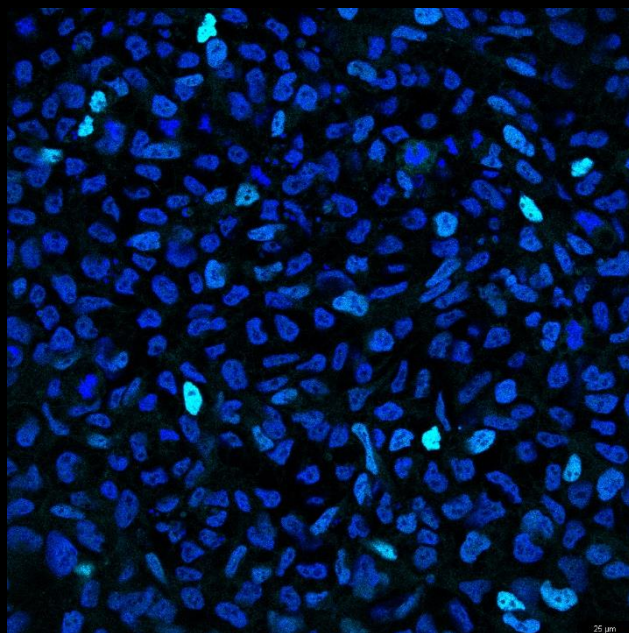
# LUMC0195iFOXC04

Endoderm

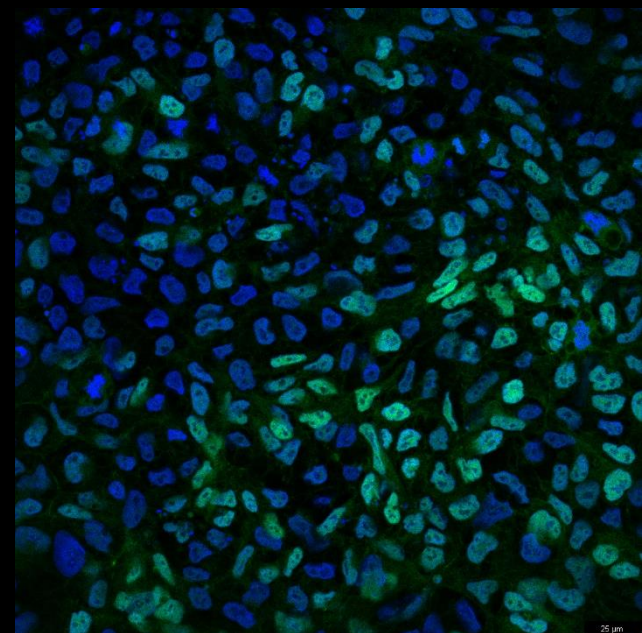
FOXA2 DAPI



GATA4 DAPI



Eomes DAPI

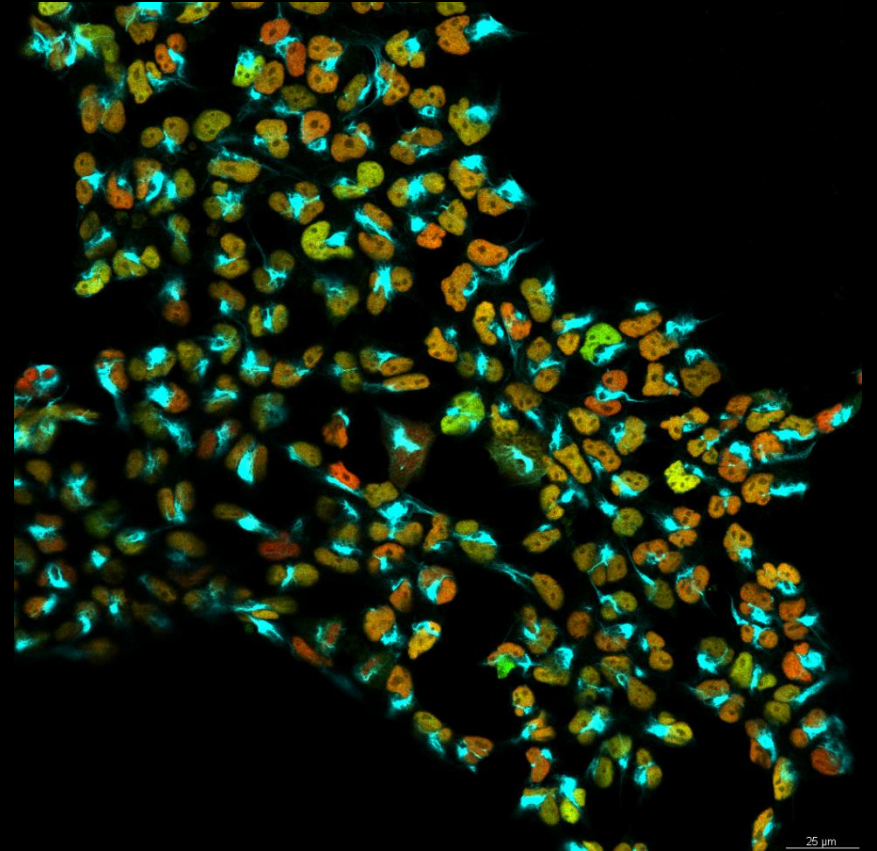
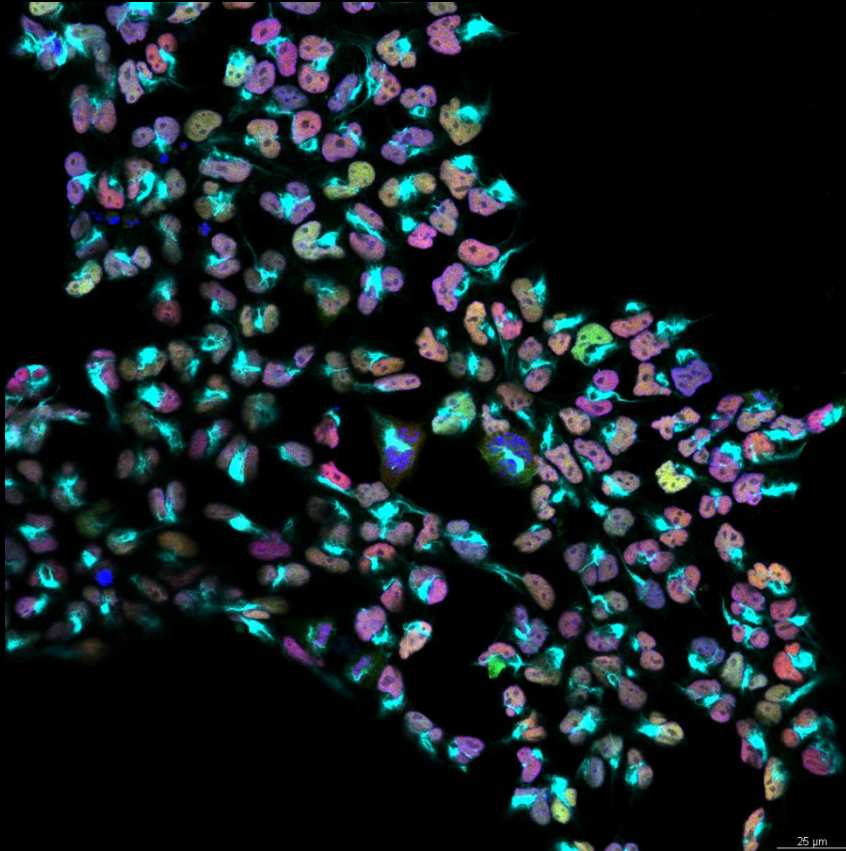


# LUMC00195iFOXC04

Mesoderm

Brachyury CDX2 Vimentin DAPI

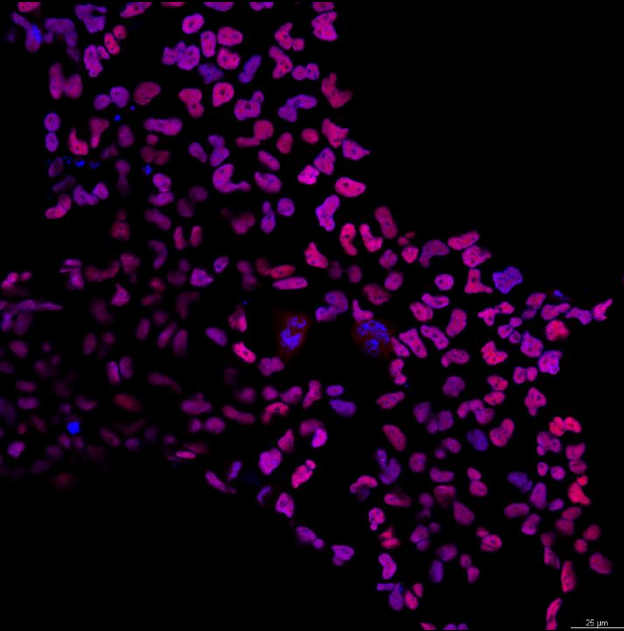
Brachyury CDX2 Vimentin



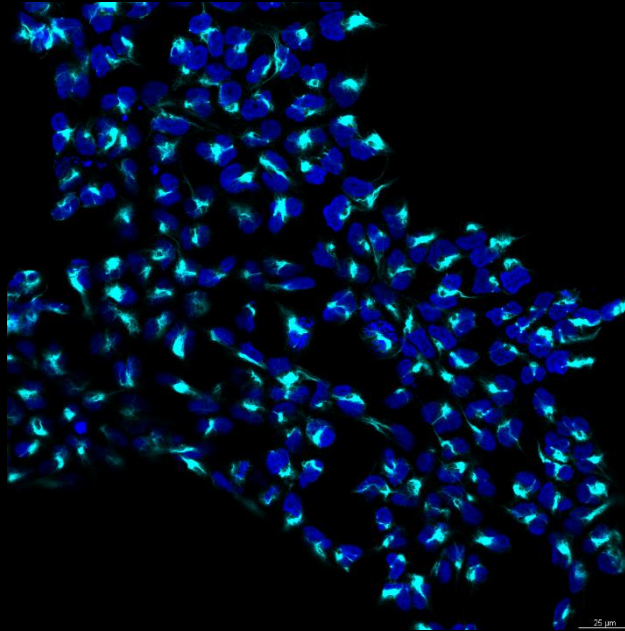
# LUMC0195iFOXC04

Mesoderm

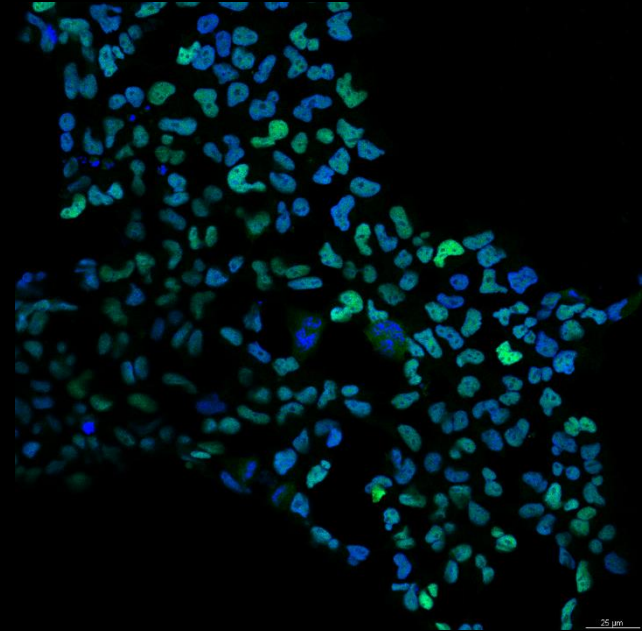
CDX2 DAPI



Vimentin DAPI



Brachyury DAPI



# Conclusion

Clone	Ectoderm	Endoderm	Mesoderm
01	V	V	V
03	V	V	V
04	V	V	V

# Pluripotency FACS results

Clone	OCT 3/4	NANOG	SSEA4
01	>90%	>90%	>90%
03	>85%	>90%	>85%
04	>90%	>95%	>95%

Pluripotent stem cell: >75% positive