

### Pluripotent RT-PCR

markers: Oct4, Nanog and Sox2

iPSC lines (at passage 6):

1 – MS30.1; 2 – MS30.2; 3 – MS30.3 ; 4 – MS31.1; 5 – MS31.2; 6 – MS31.3

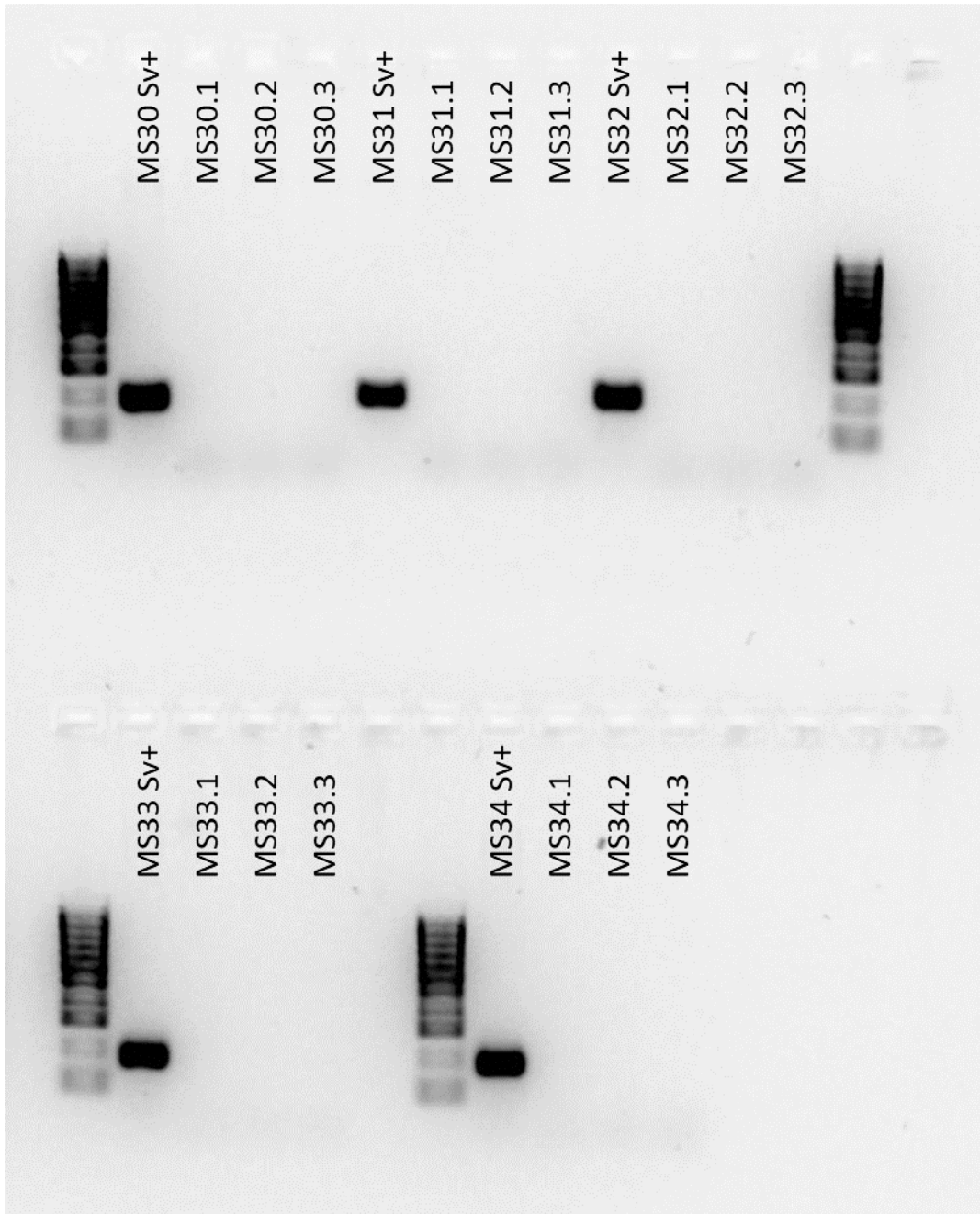
7 – MS32.1; 8 – MS32.2; 9 – MS32.3; 10 – MS33.1; 11 – MS33.2; 12 – MS33.3

13 – MS34.1; 14 – MS34.2; 15 – MS34.3; 16 – No template control



### Germ layers RT-PCR

markers (in red)	Embryoid bodies from iPSC lines (in blue)
1) Nes – ectoderm	1 – MS30.1
2) Pax6 - ectoderm	2 – MS30.2
3) T – mesoderm	3 – MS30.3
4) Mesp1 – mesoderm	4 – MS31.1
5) GATA-4 – meso/endo	5 – MS31.2
6) NHF4a – endoderm	6 – MS31.3
7)GAPDH – control	7 – MS32.1
	8 – MS32.2
	9 – MS32.3
	10 – MS33.1
	11 – MS33.2
	12 – MS33.3
	13 – MS34.1
	14 – MS34.2
	15 – MS34.3



### Sendai virus RT-PCR

Sendai virus positive samples from passage 1 - just after clone selection. All other samples (negative for Sendai virus) are from the iPSC lines at passage 14.