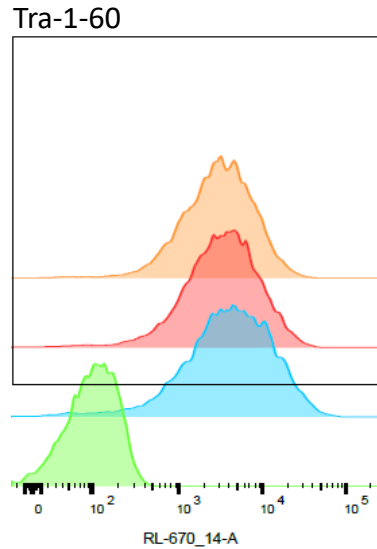
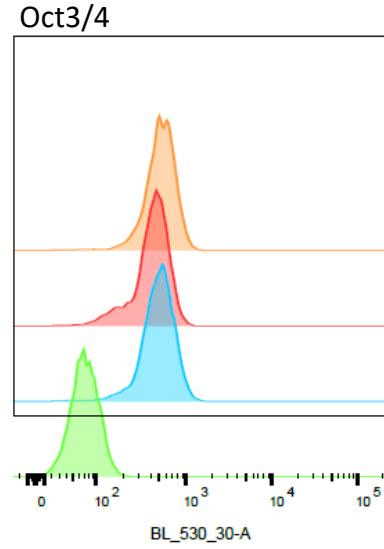


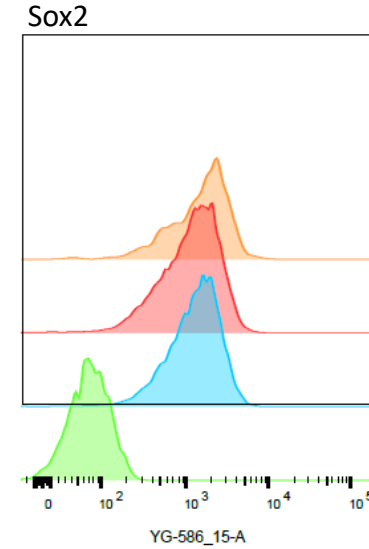
KiTZ-iPSC-001
 Clones C30/ C89/ C102
 08.08.2022



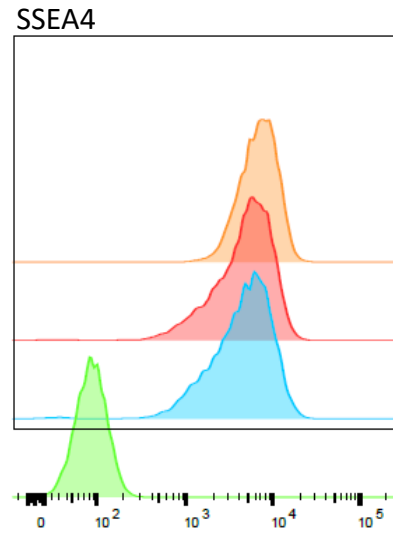
Sample Name	Subset Name	Count
Specimen_001_C30 Tra-1-60.fcs	Single Cells - SSC	8589
Specimen_001_C102 Tra-1-60.fcs	Single Cells - SSC	8652
Specimen_001_C89 Tra-1-60.fcs	Single Cells - SSC	8352
Specimen_001_Blank.fcs	Single Cells - SSC	8788



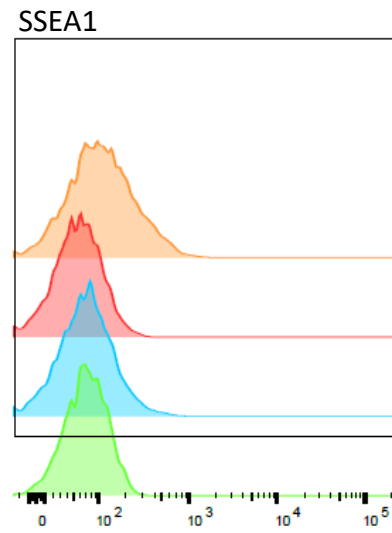
Sample Name	Subset Name	Count
Specimen_001_C30 Oct3,7c,4.fcs	Single Cells - SSC	2893
Specimen_001_C102 Oct3,7c,4.fcs	Single Cells - SSC	9120
Specimen_001_C89 Oct3,7c,4.fcs	Single Cells - SSC	8664
Specimen_001_Blank.fcs	Single Cells - SSC	8788



Sample Name	Subset Name	Count
Specimen_001_C30 Sox2.fcs	Single Cells - SSC	553
Specimen_001_C102 Sox2.fcs	Single Cells - SSC	9187
Specimen_001_C89 Sox2.fcs	Single Cells - SSC	9008
Specimen_001_Blank.fcs	Single Cells - SSC	8788



Sample Name	Subset Name	Count
Specimen_001_C30 SSEA4.fcs	Single Cells - SSC	8485
Specimen_001_C102 SSEA4.fcs	Single Cells - SSC	8522
Specimen_001_C89 SSEA4.fcs	Single Cells - SSC	8513
Specimen_001_Blank.fcs	Single Cells - SSC	8788



Sample Name	Subset Name	Count
Specimen_001_C30 SSEA1.fcs	Single Cells - SSC	8507
Specimen_001_C102 SSEA1.fcs	Single Cells - SSC	8355
Specimen_001_C89 SSEA1.fcs	Single Cells - SSC	8549
Specimen_001_Blank.fcs	Single Cells - SSC	8788

	C.102	C.89	C.30
SSEA4	99	98,7	99,4
SSEA1	0,3	2,8	11,8
Sox2	93,2	95,8	93,5
Oct3/4	89,6	95,6	96,7
Tra-1-60	95,8	94,9	97,9