

LUMC0181iXLRs

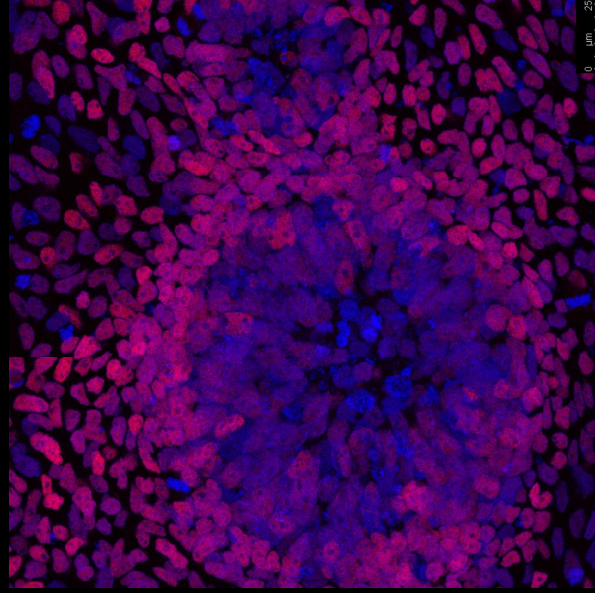
Differentiation staining and
Pluripotency FACS

31-05-2019

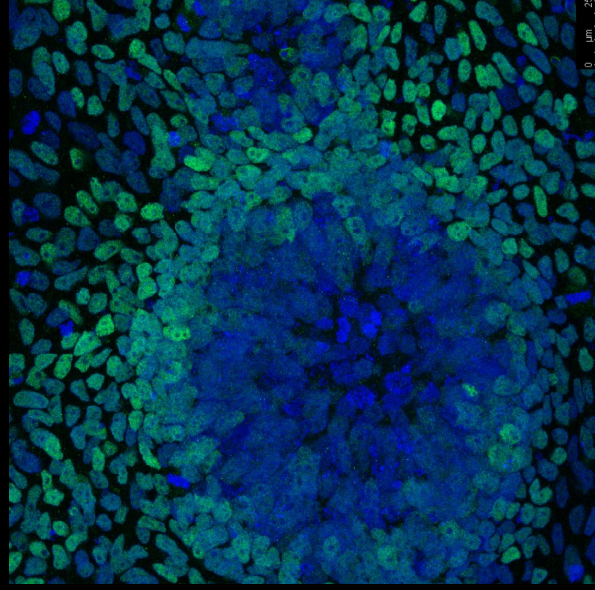
LUMC0181iXLRs01

Ectoderm

PAX6 DAPI



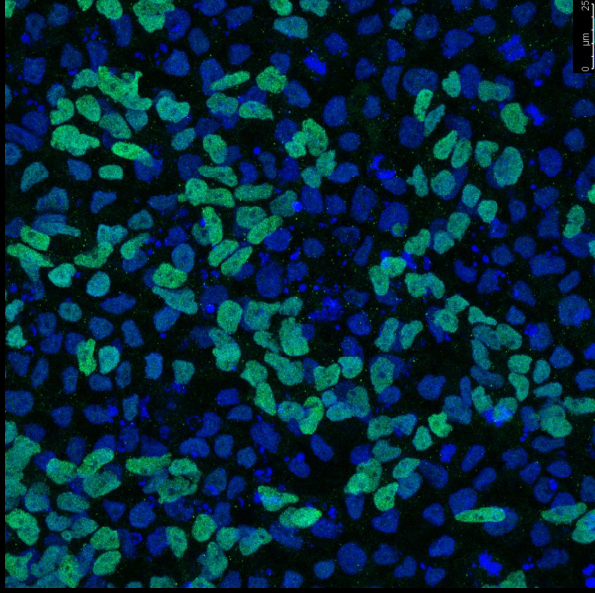
SOX1 DAPI



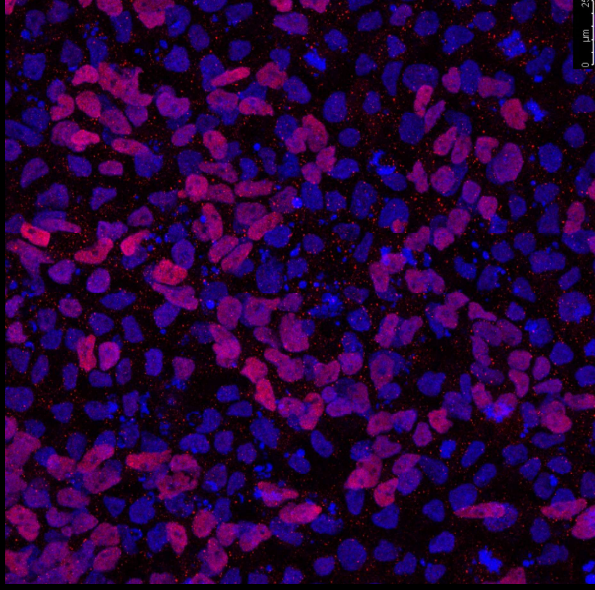
LUMC0181iXLR01

Endoderm

FOXA2 DAPI



SOX17 DAPI

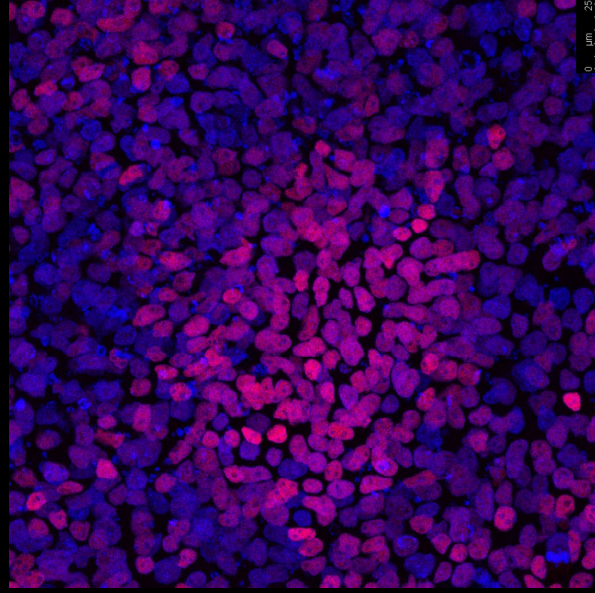


400x

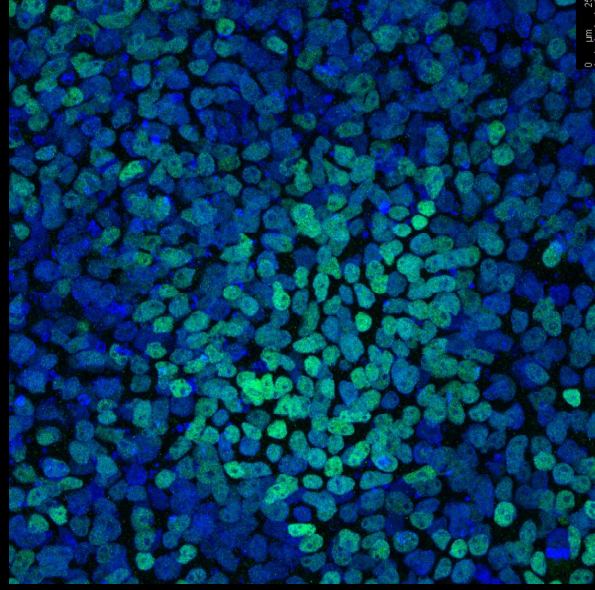
LUMC0181iXLR02

Ectoderm

PAX6 DAPI



SOX1 DAPI

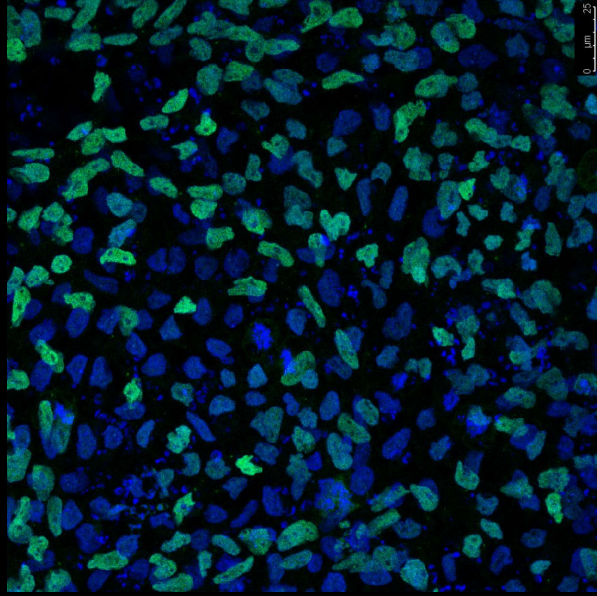


400x

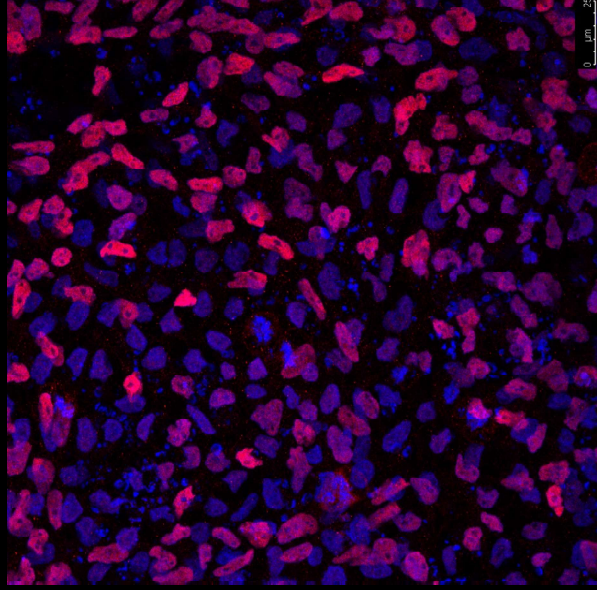
LUMC0181iXLRs02

Endoderm

FOXA2 DAPI



SOX17 DAPI

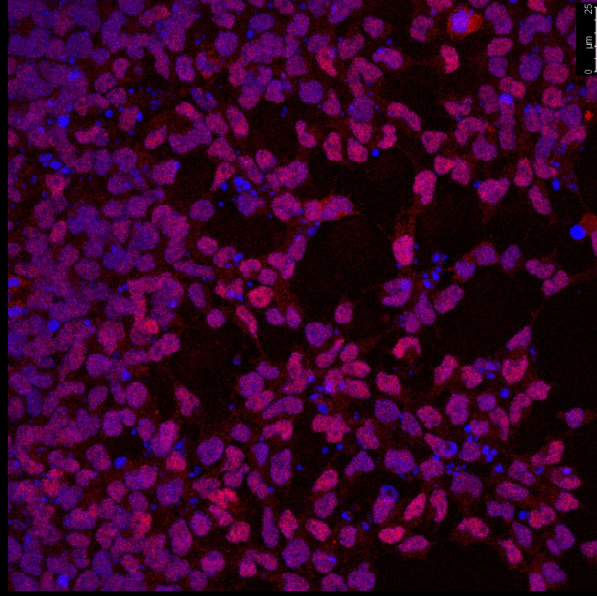


400x

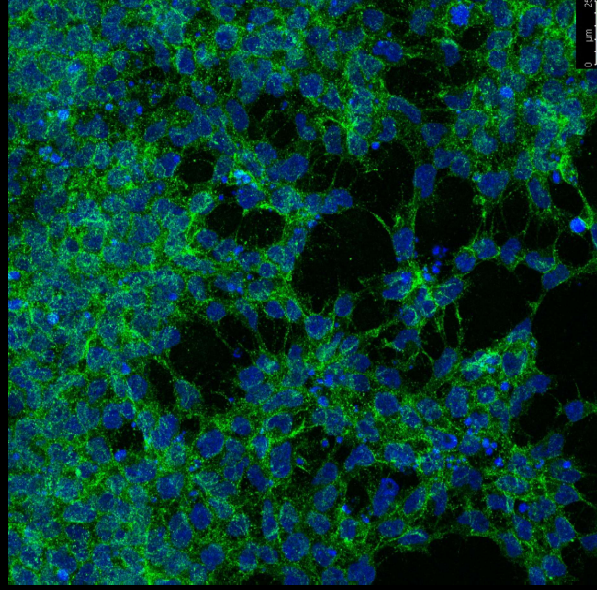
LUMC0181iXLRs02

Mesoderm

Brachyury DAPI



NCAM DAPI

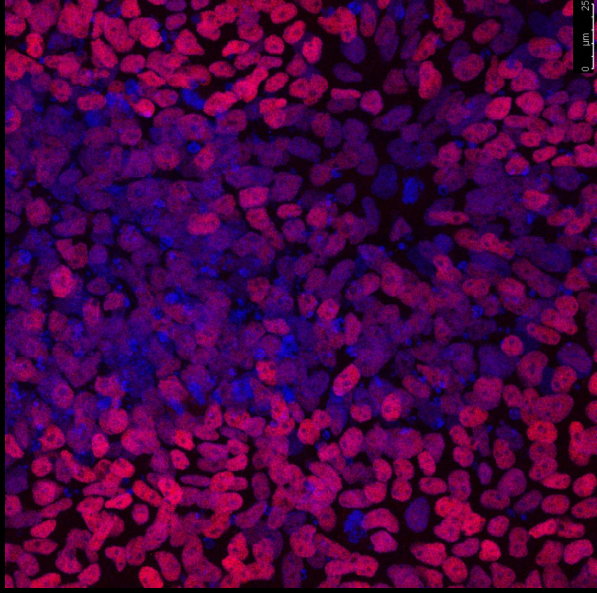


400x

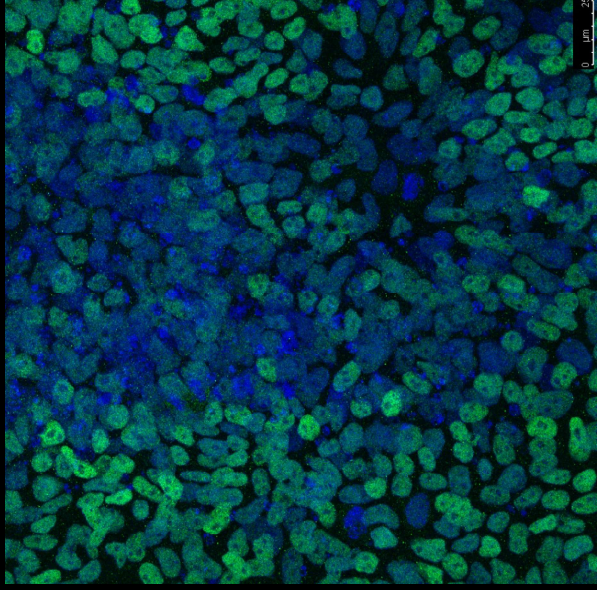
LUMC0181iXLR06

Ectoderm

PAX6 DAPI



SOX1 DAPI

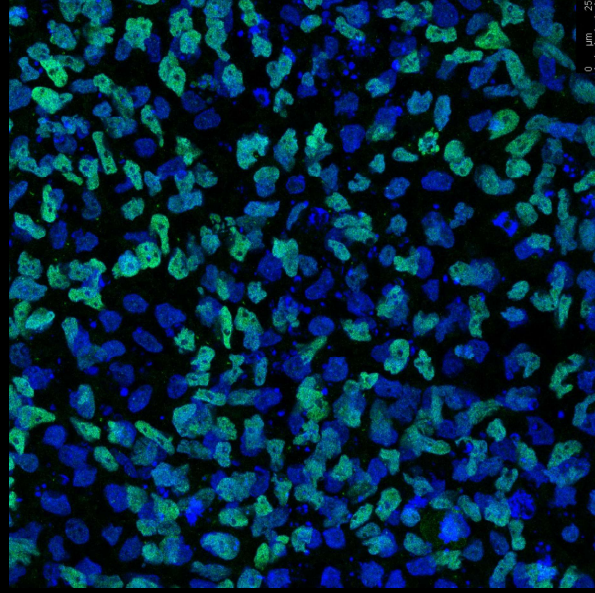


400x

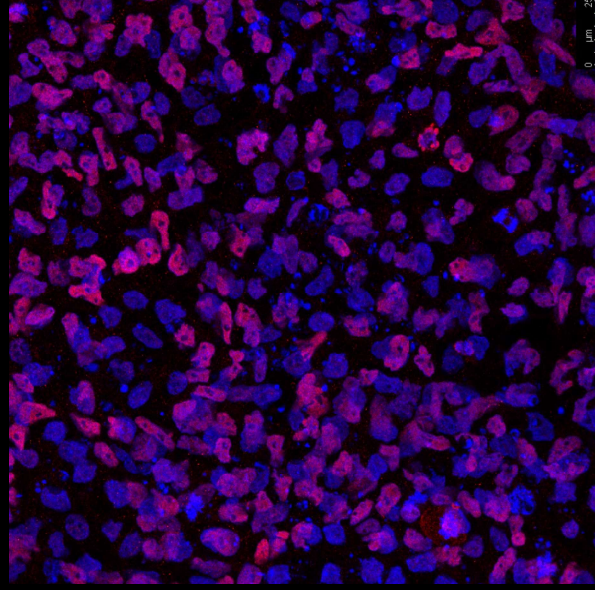
LUMC0181iXLR06

Endoderm

FOXA2 DAPI



SOX17 DAPI

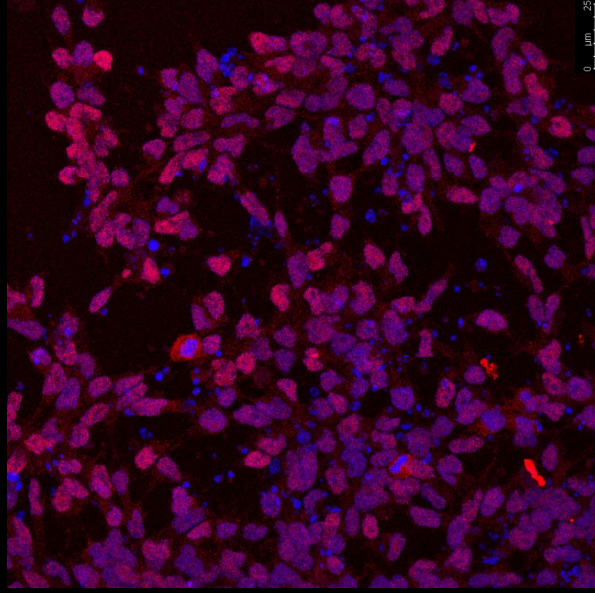


400x

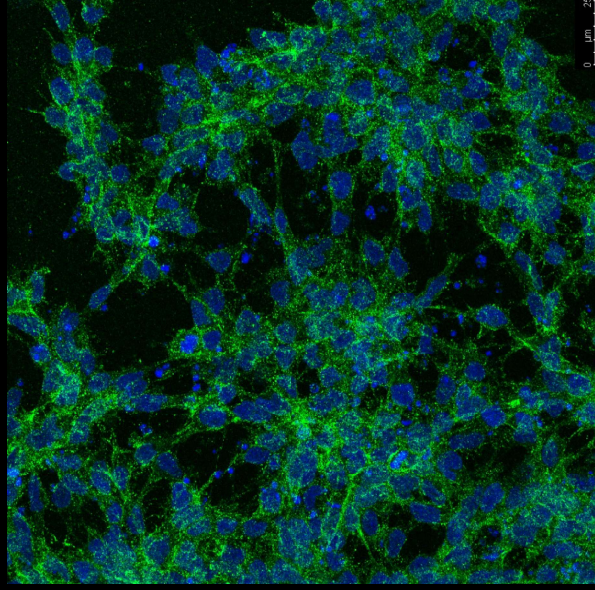
LUMC0181iXLRs06

Mesoderm

Brachyury DAPI



NCAM DAPI



400x

Conclusion

Clone	Ectoderm	Endoderm	Mesoderm
01	V	V	V
02	V	V	V
06	V	V	V

Pluripotency FACS results

Clone	OCT 3/4	NANOG	SSEA4
01	97,0%	99,5%	99,1%
02	94,2%	98,6%	97,9%
06	97,3%	99,2%	99,2%