

# LUMC0182iXLRs

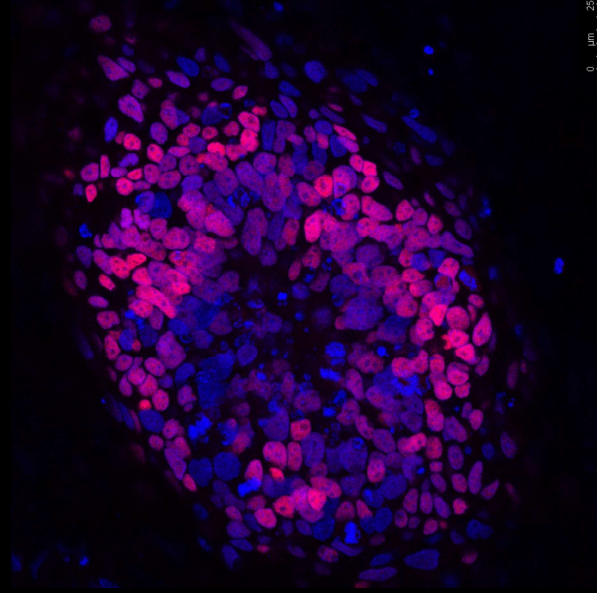
Differentiation staining and  
Pluripotency FACS

31-05-2019

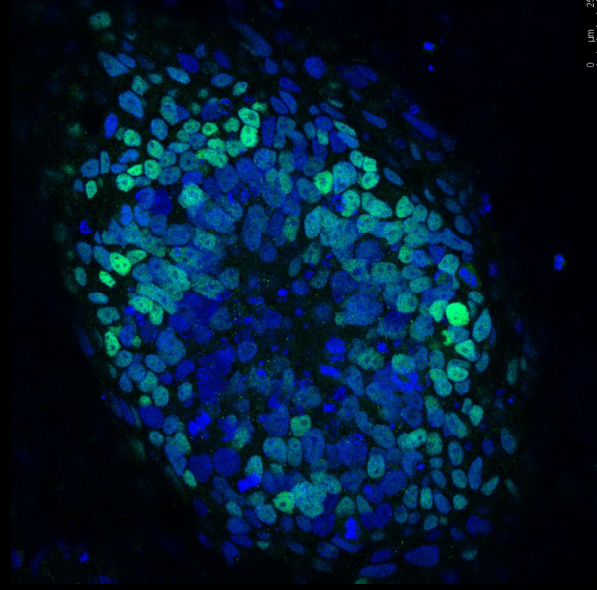
## LUMC0182iXLRs01

Ectoderm

PAX6 DAPI



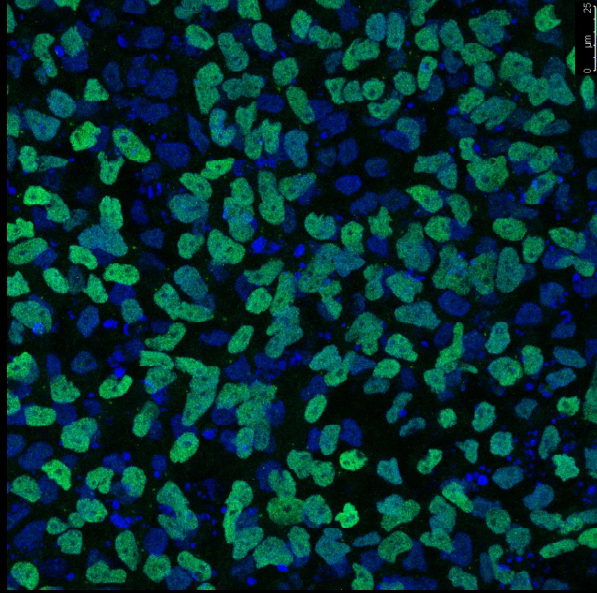
SOX1 DAPI



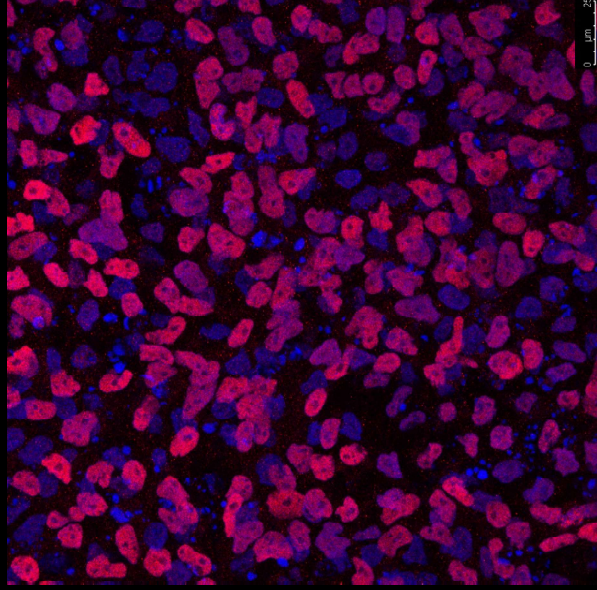
# LUMC0182iXLRs01

Endoderm

FOXA2 DAPI



SOX17 DAPI

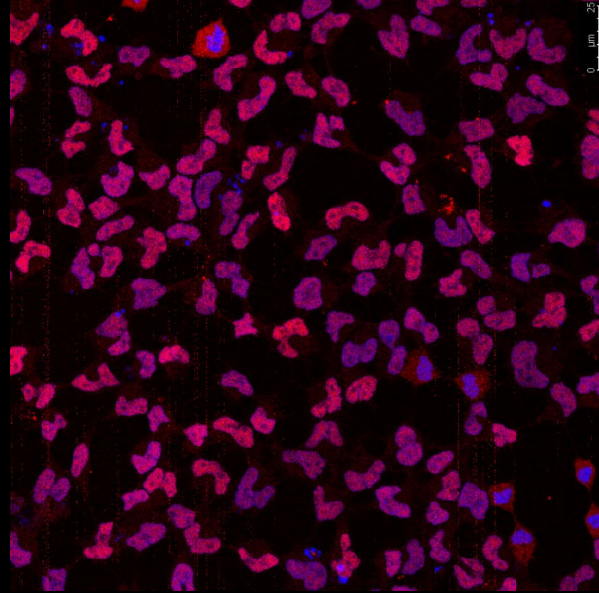


400x

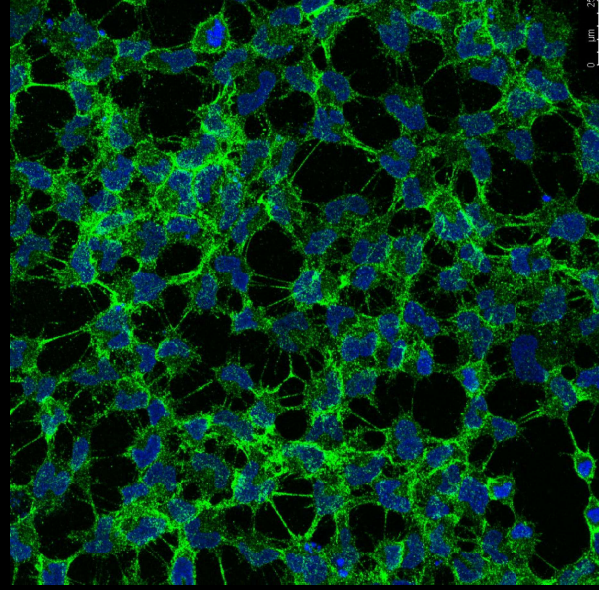
# LUMC0182iXLRs01

Mesoderm

Brachury DAPI



NCAM DAPI

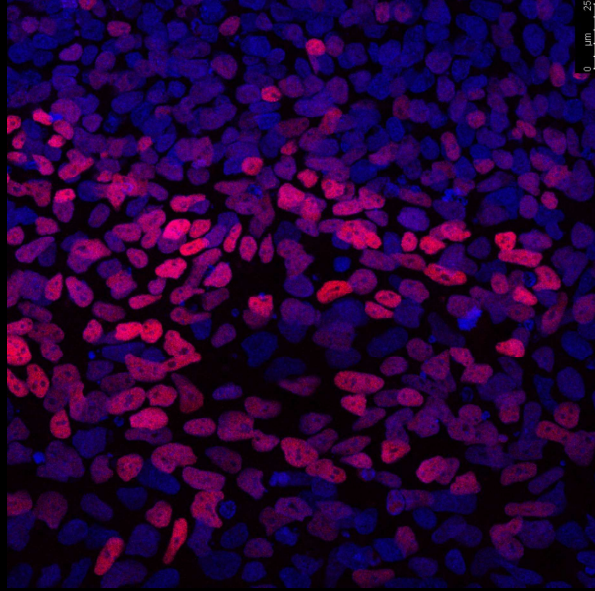


400x

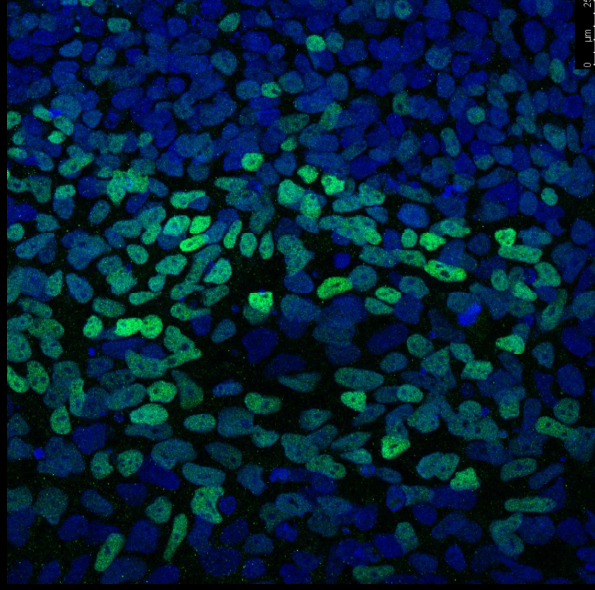
# LUMC0182iXLRs02

Ectoderm

PAX6 DAPI



SOX1 DAPI

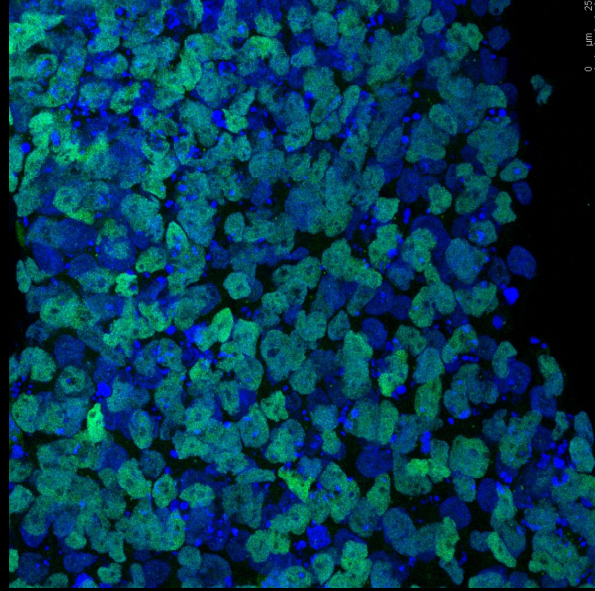


400x

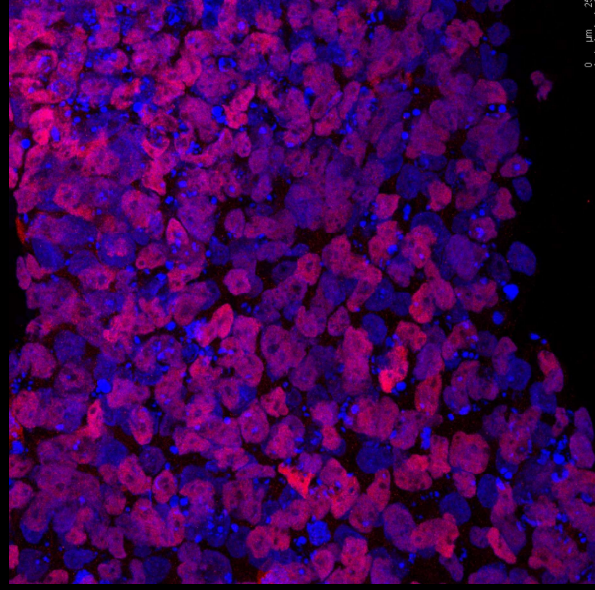
# LUMC0182iXLRs02

Endoderm

FOXA2 DAPI



SOX17 DAPI

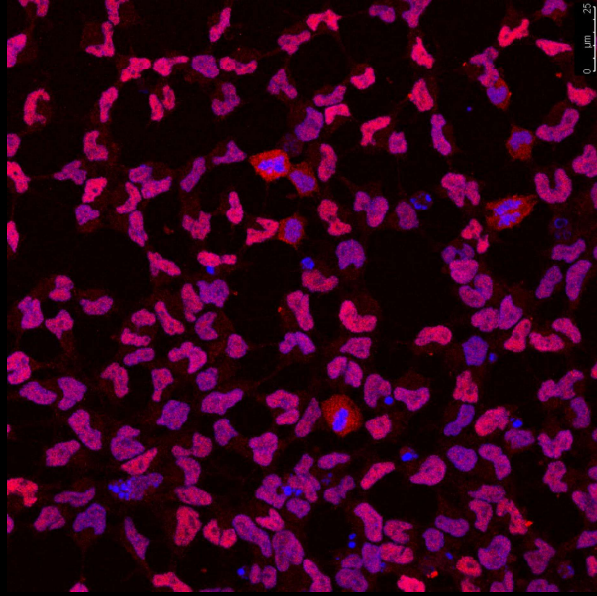


400x

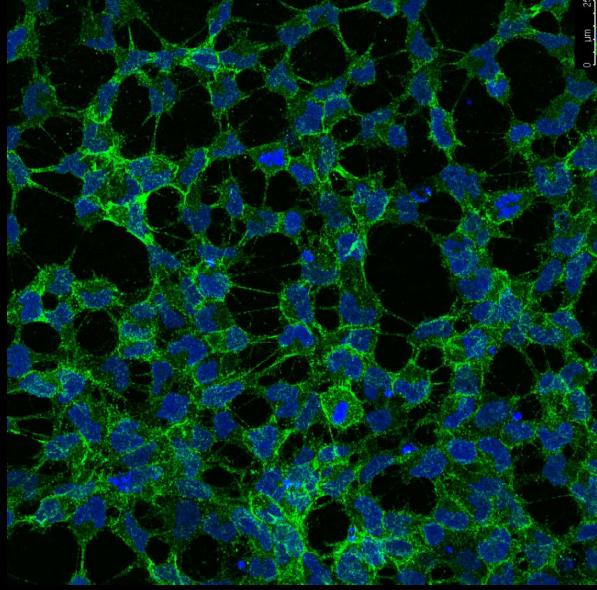
# LUMC0182iXLR02

Mesoderm

Brachyury DAPI



NCAM DAPI

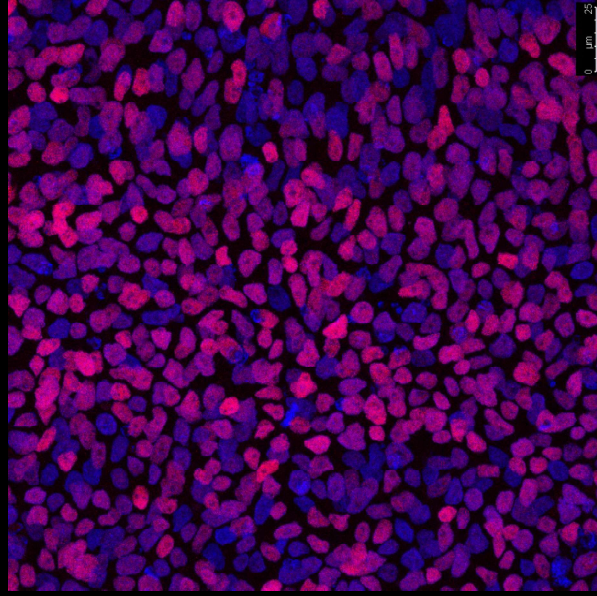


400x

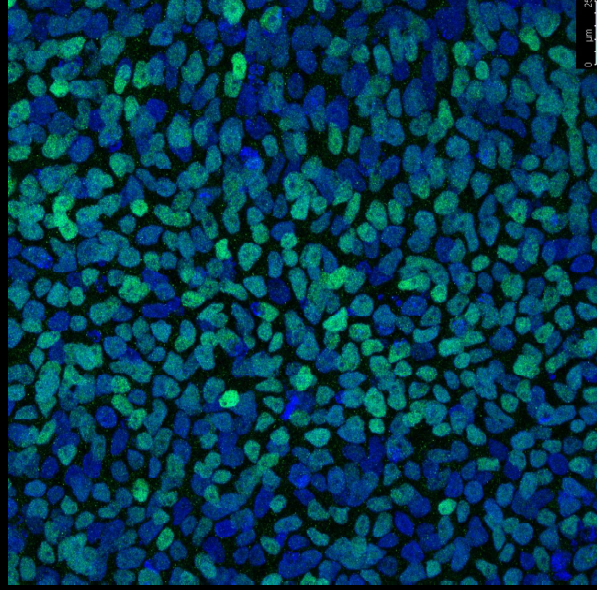
# LUMC0182iXLR03

Ectoderm

PAX6 DAPI



SOX1 DAPI

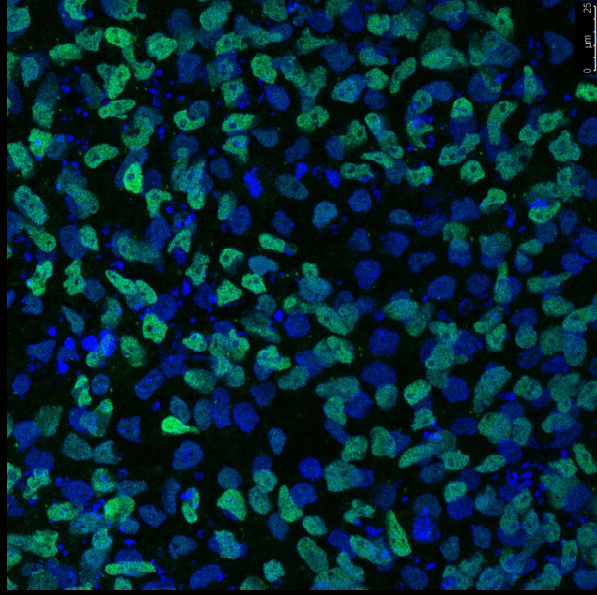


400x

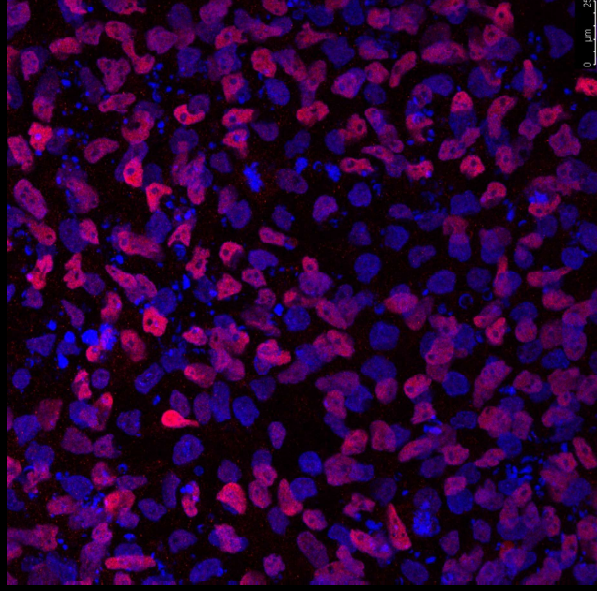
# LUMC0182iXLRs03

Endoderm

FOXA2 DAPI



SOX17 DAPI

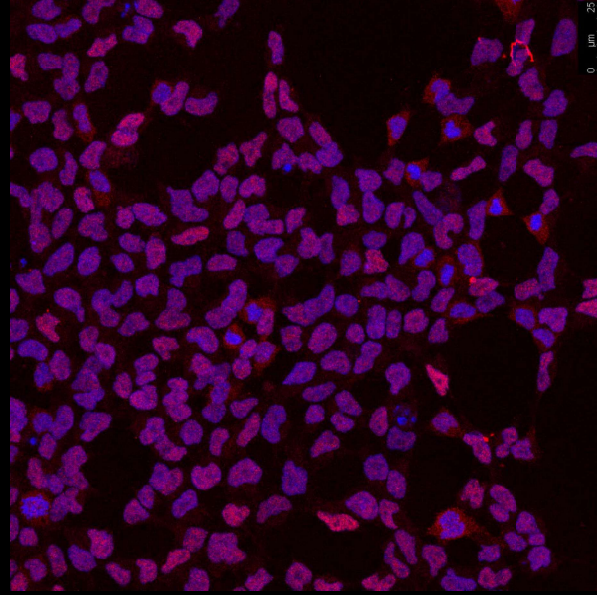


400x

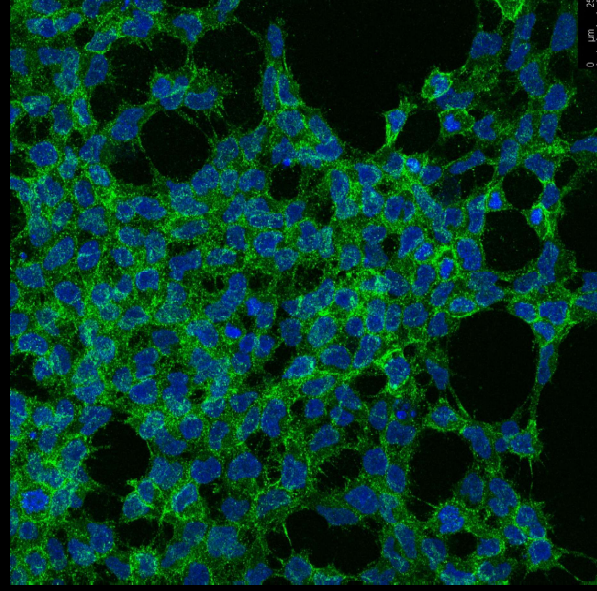
# LUMC0182iXLRs03

Mesoderm

Brachyury DAPI



NCAM DAPI



400x

# Conclusion

Clone	Ectoderm	Endoderm	Mesoderm
01	V	V	V
02	V	V	V
03	V	V	V

\\wf-mcb-research-archive\mcb-research-archive\$\Facilities\IPSC\IPs\Lines organised to disease\XLRs (AMC, A. ten Asbroek)\LUMC0182\XLRs

# Pluripotency FACS results

Clone	OCT 3/4	NANOG	SSEA4
01	94,8%	95,1%	98,8%
02	95,7%	97,4%	99,2%
03	94,7%	96,2%	98,7%