

isoLUMC0128iCRB01

Pluripotency & Trilineage differentiation

01-07-2020/01-09-2020

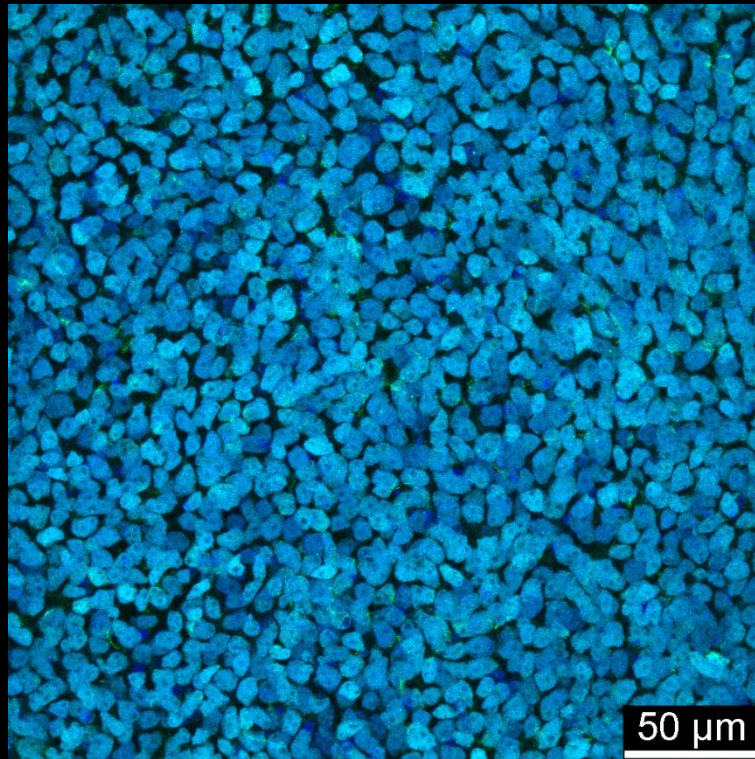
Flow cytometry results pluripotency markers

Clone	OCT 3/4	NANOG	SSEA4
01	96,5%	94,0%	99,2%
02	82,3%	83,5%	85,8%
03	98,7%	97,6%	99,3%

iso01LUMC0128iCRB01

Ectoderm

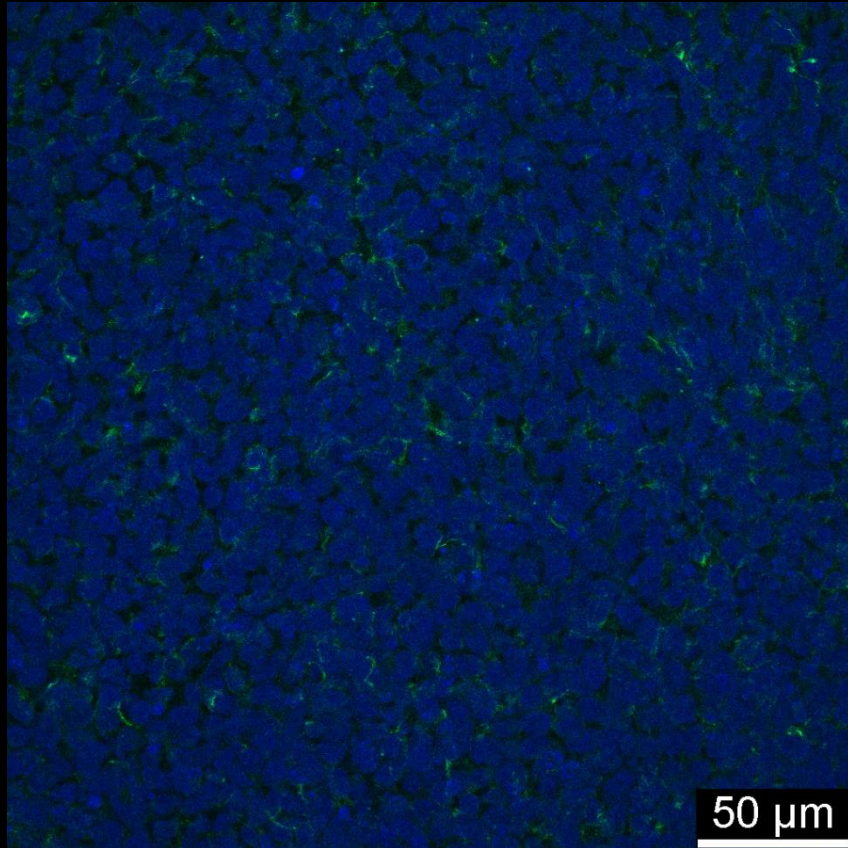
PAX6 Nestin DAPI



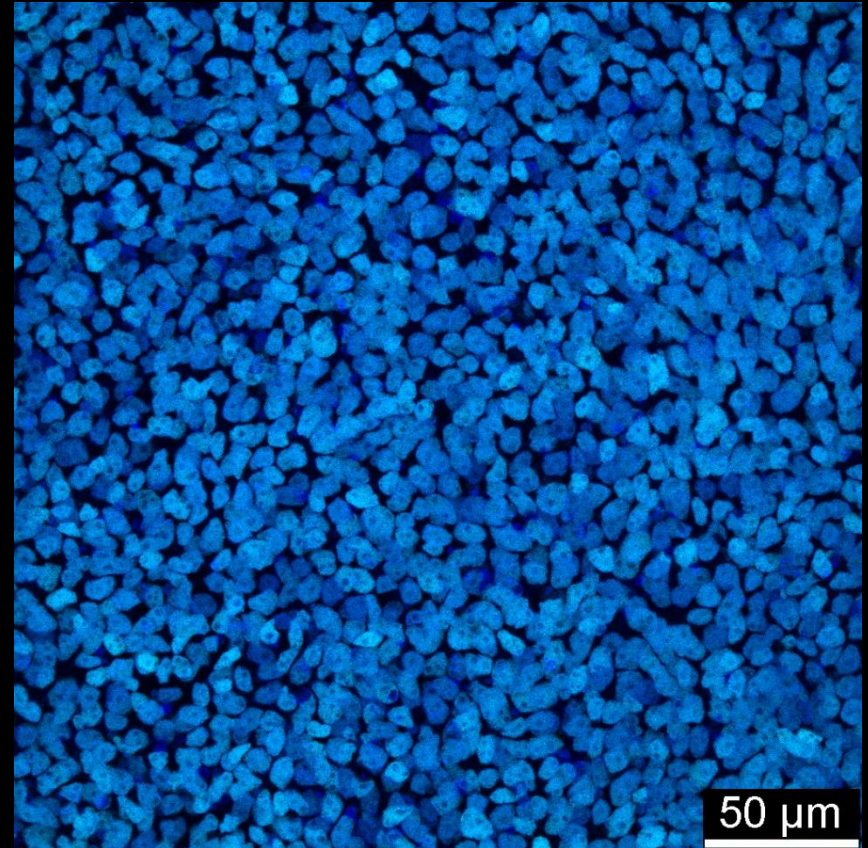
iso01LUMC0128iCRB01

Ectoderm

Nestin DAPI

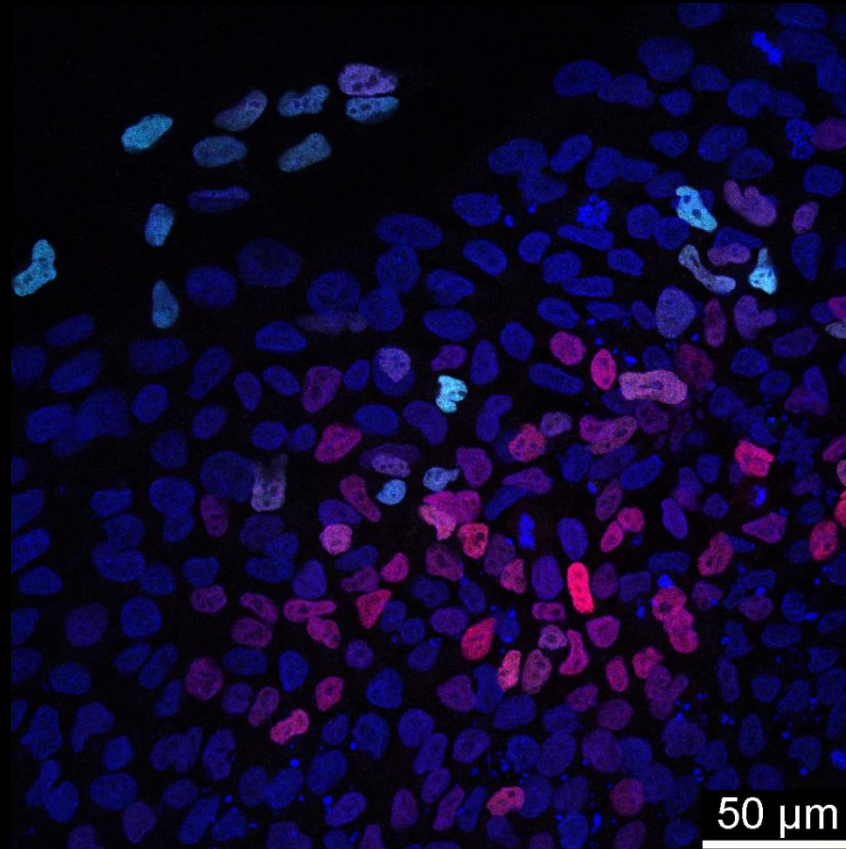


Pax6 Dapi



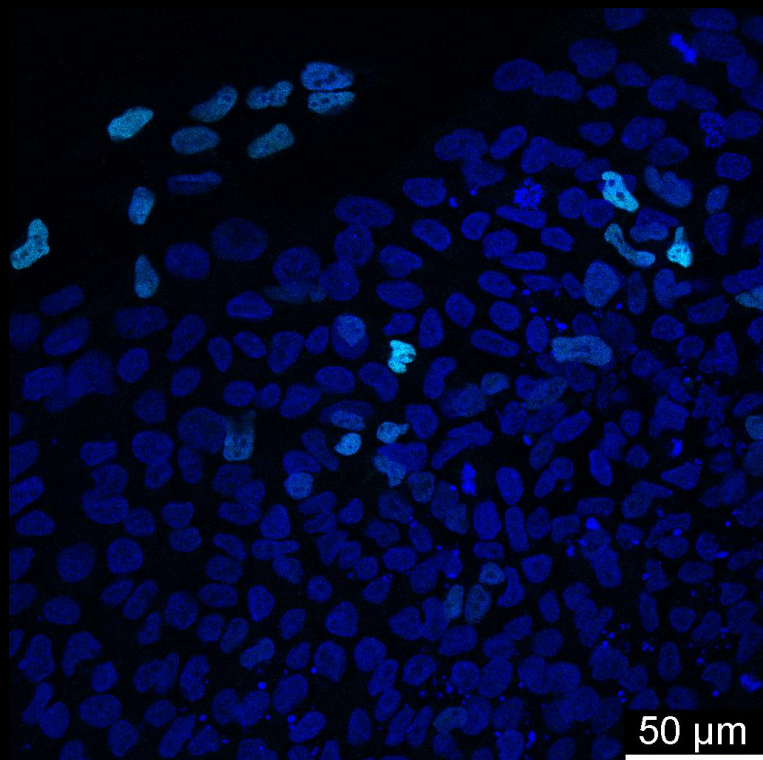
iso01LUMC0128iCRB01 Endoderm

GATA4 FOXA2 Dapi

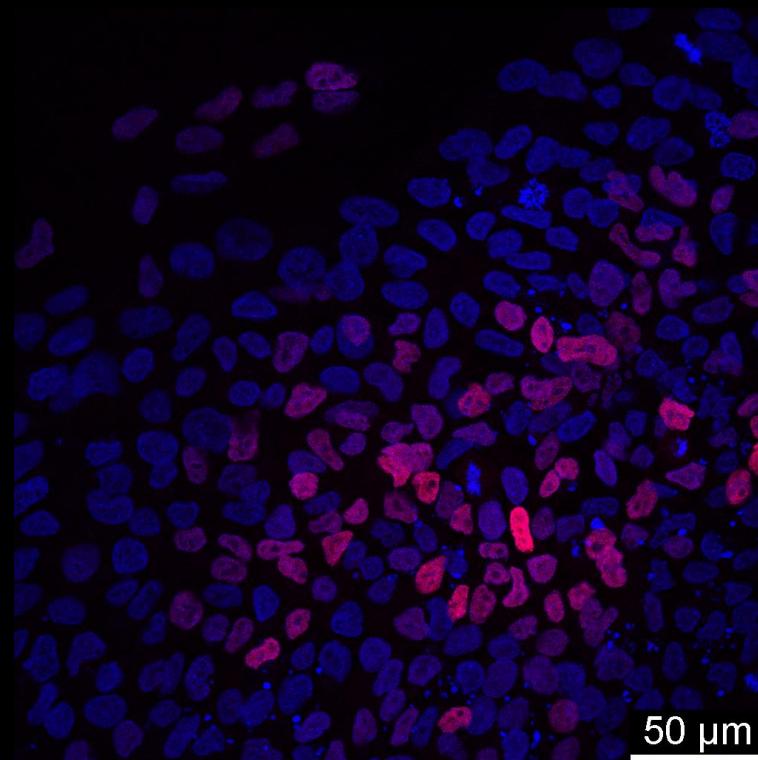


iso01LUMC0128iCRB01 Endoderm

GATA4 Dapi

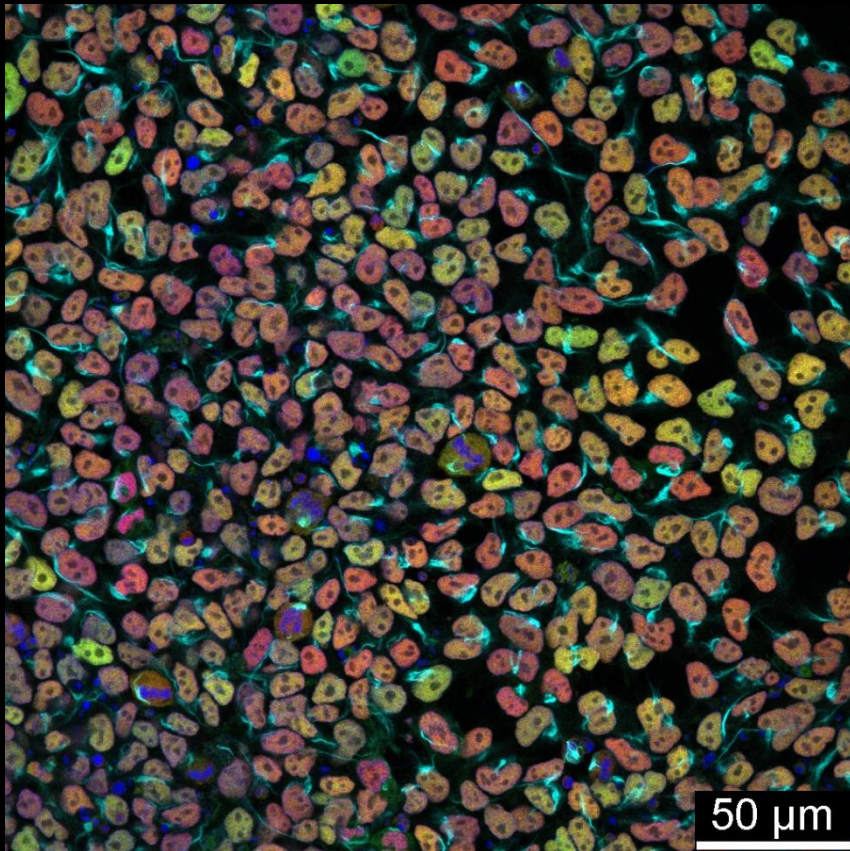


FOXA2 Dapi

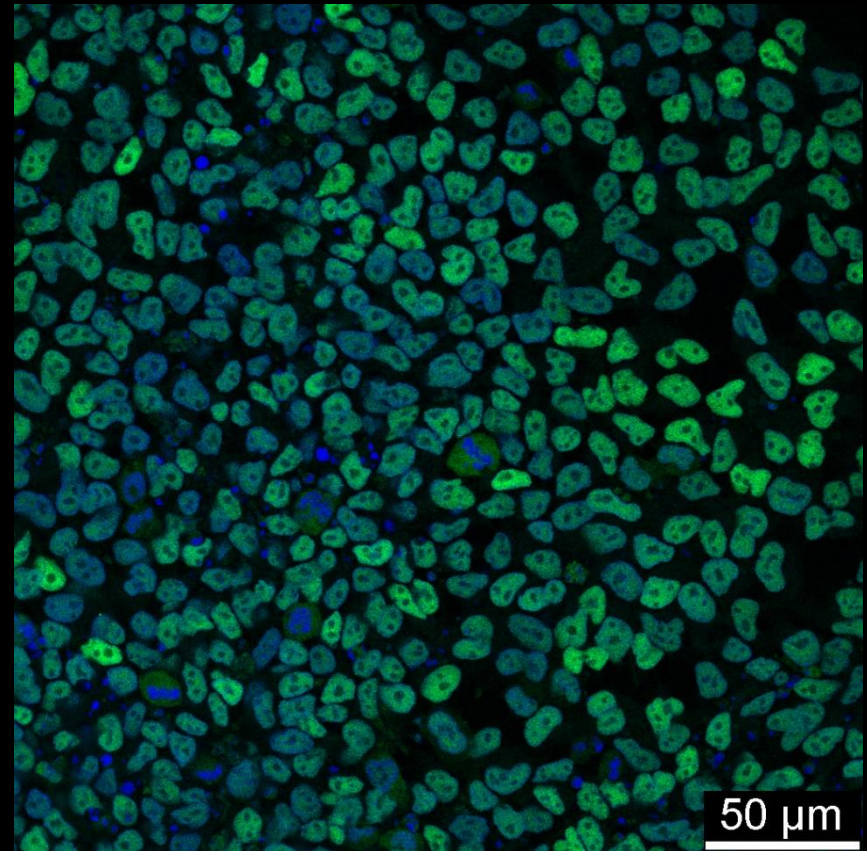


iso01LUMC0128iCRB01 Mesoderm

Brachyury CDX2 Vimentin Dapi

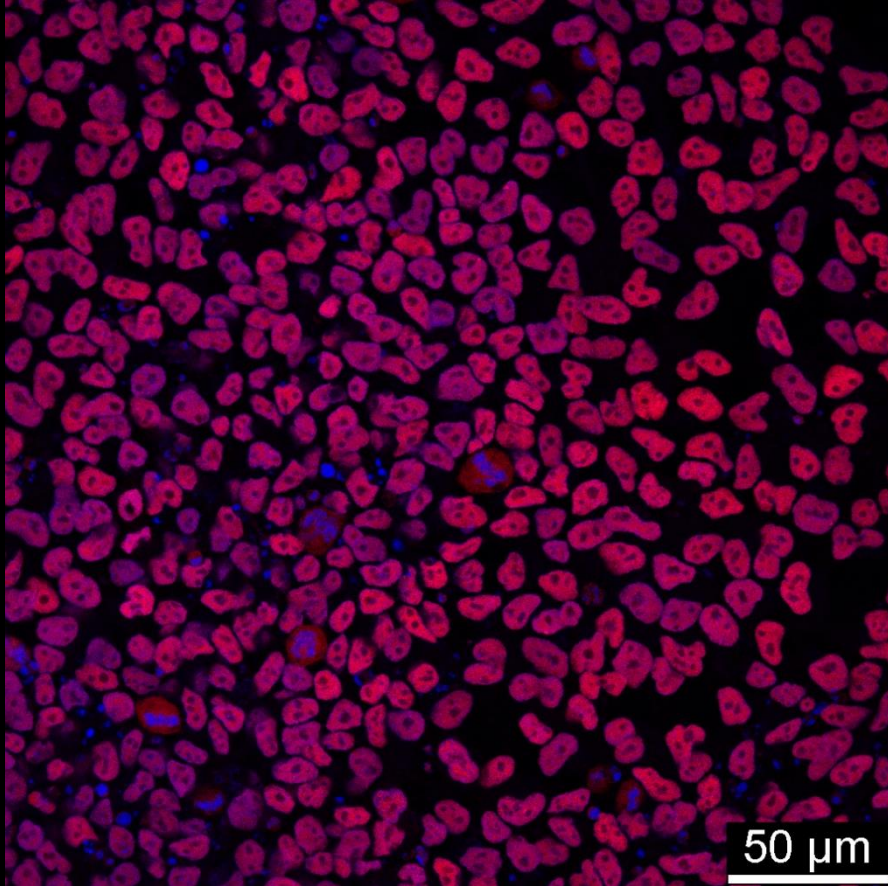


Brachyury Dapi

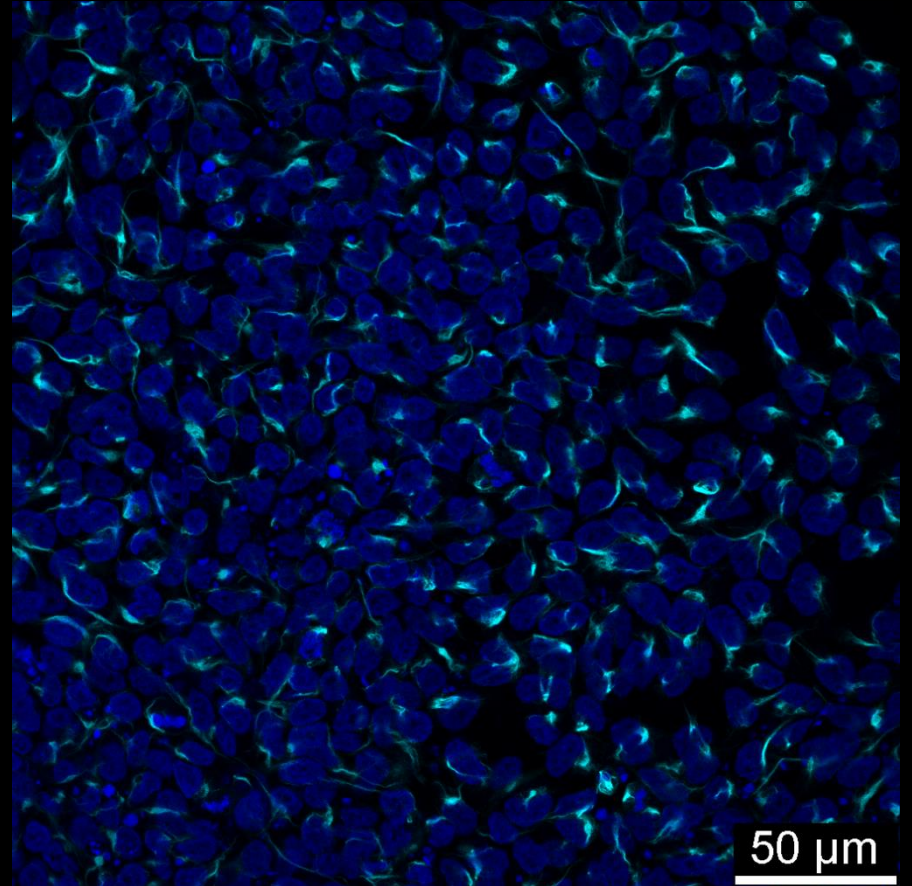


iso01LUMC0128iCRB01 Mesoderm

CDX2 Dapi



Vimentin Dapi

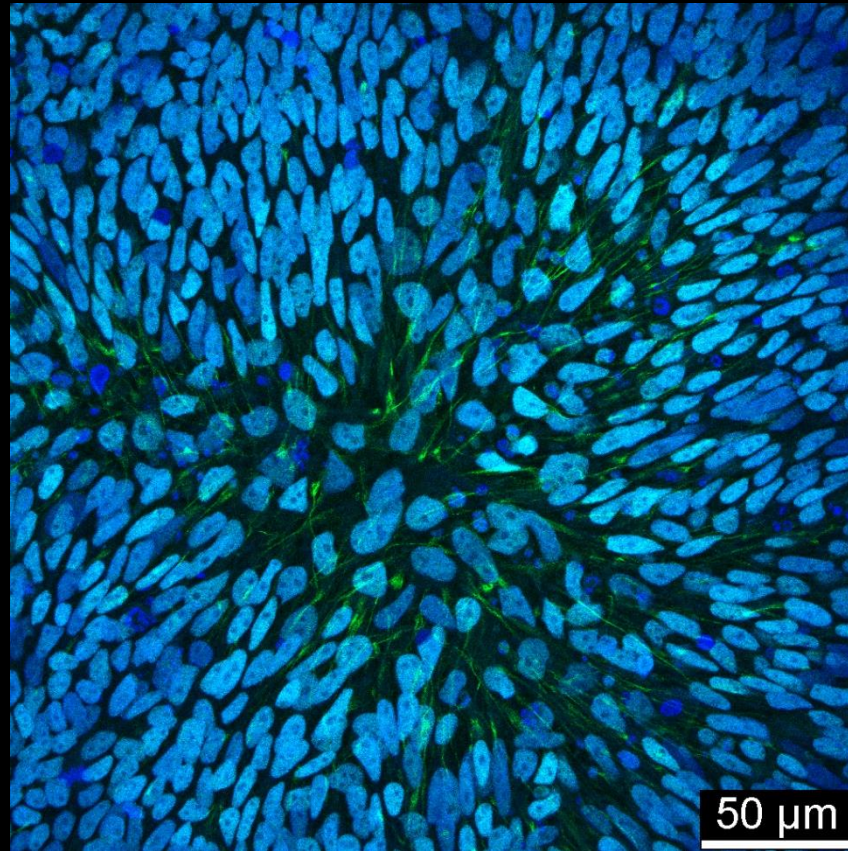


400x

iso02LUMC0128iCRB01

Ectoderm

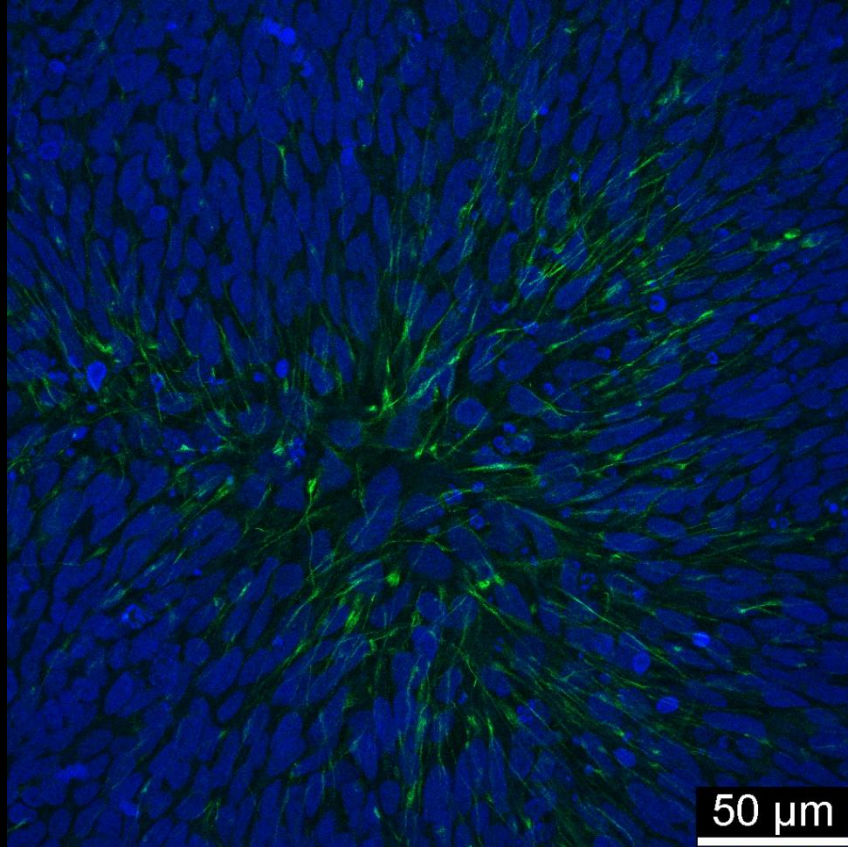
PAX6 Nestin DAPI



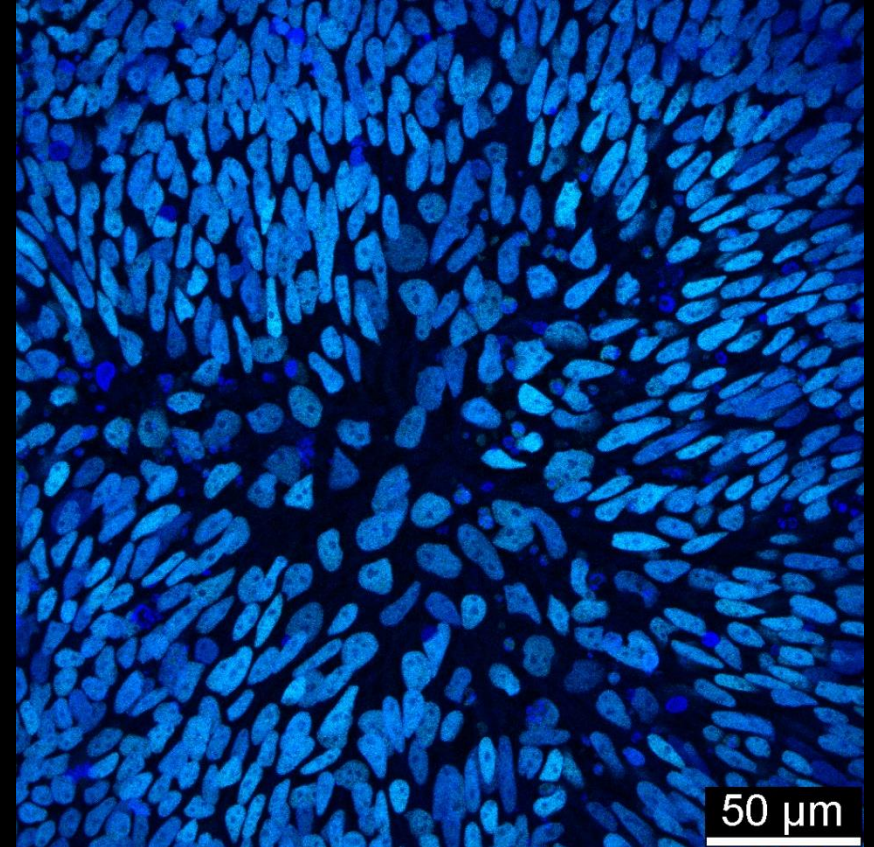
iso02LUMC0128iCRB01

Ectoderm

Nestin DAPI

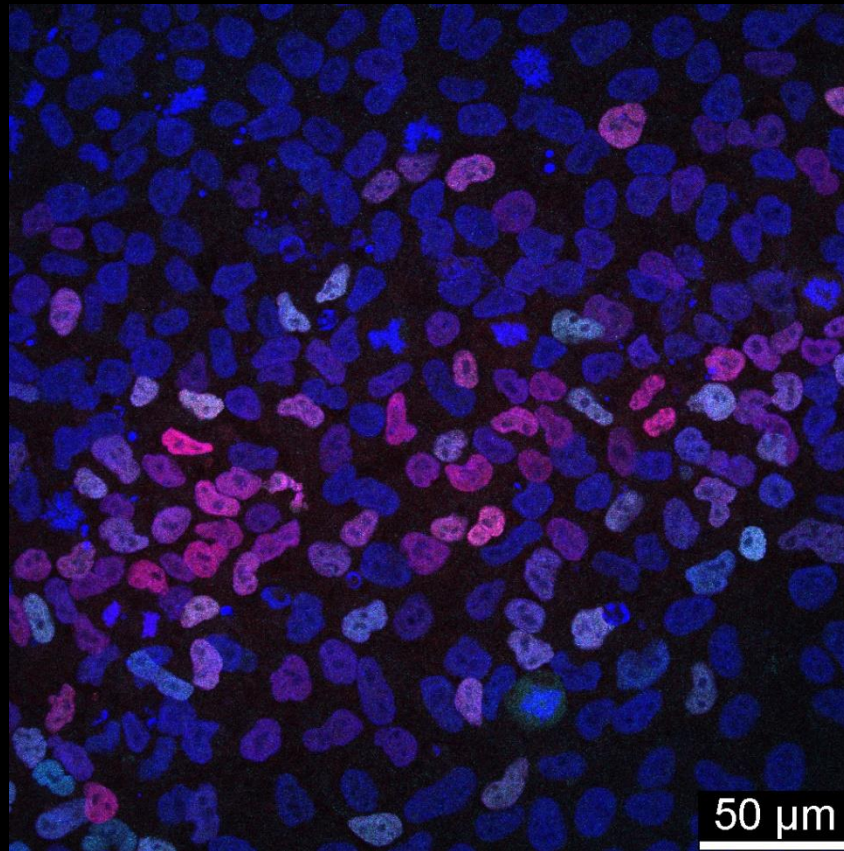


PAX6 Dapi



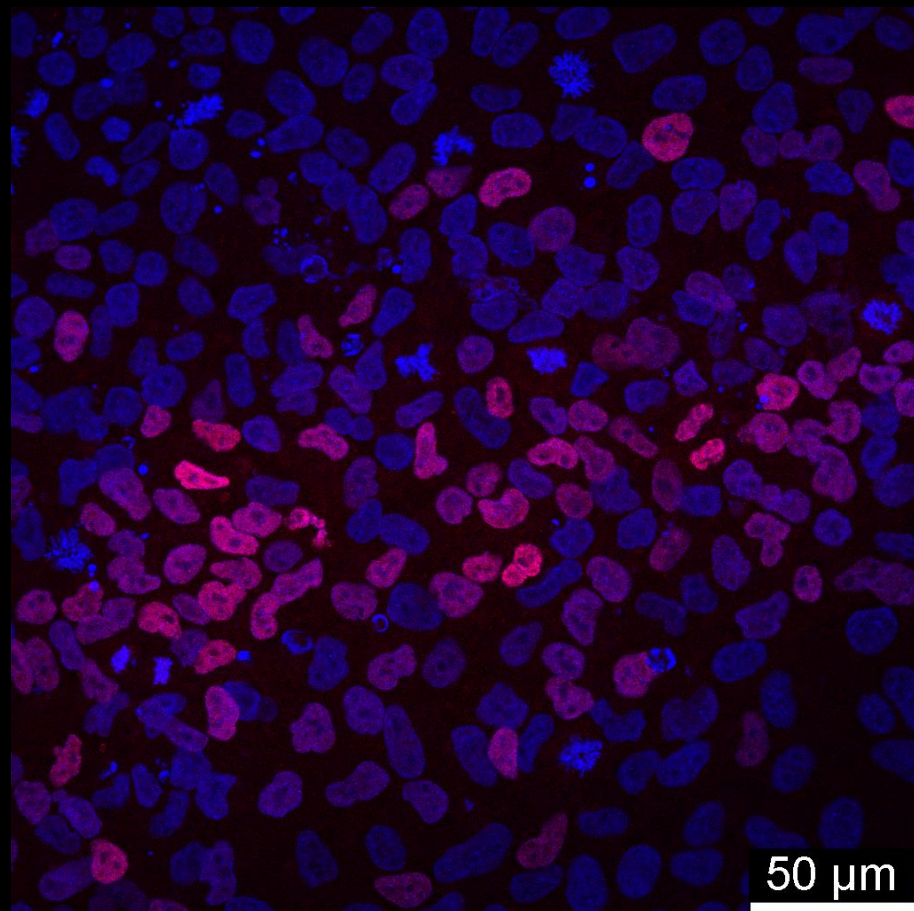
iso02LUMC0128iCRB01 Endoderm

FOXA2 GATA4 Dapi

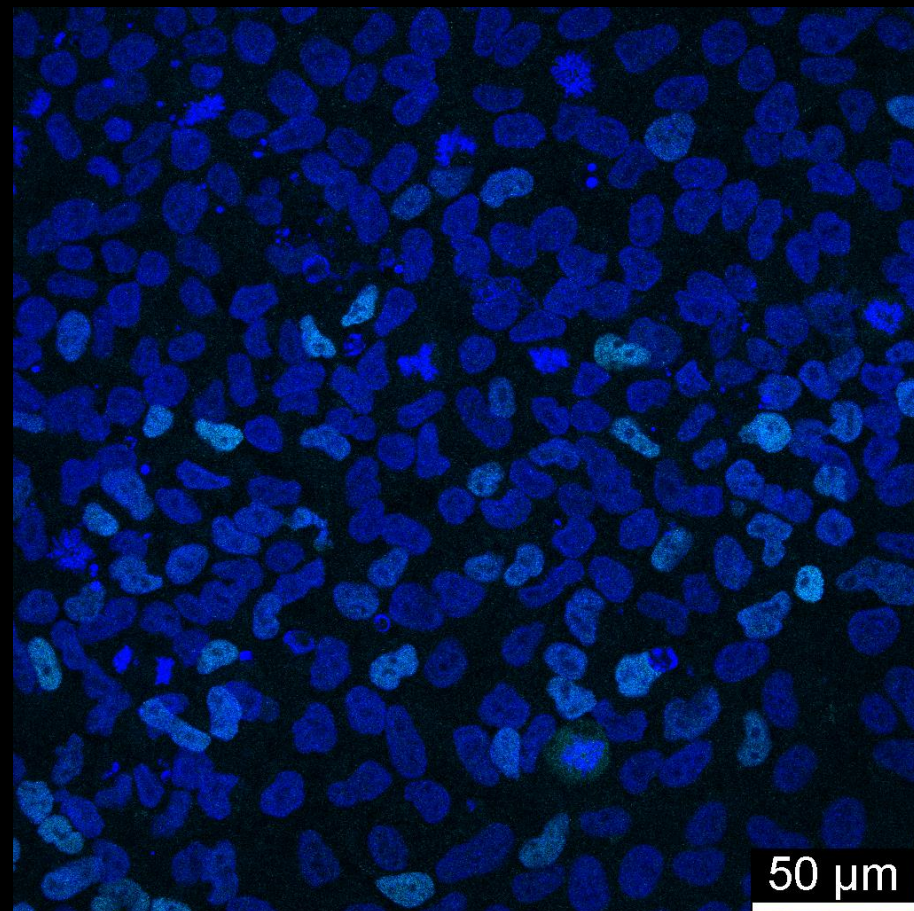


iso02LUMC0128iCRB01 Endoderm

FOXA2 Dapi

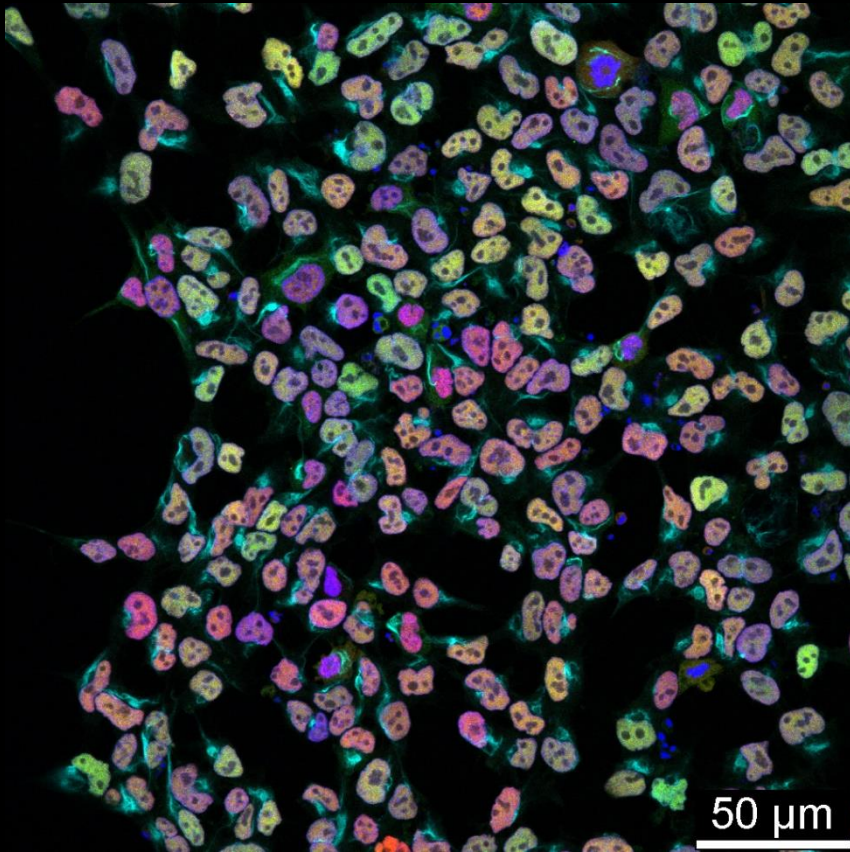


GATA4 Dapi

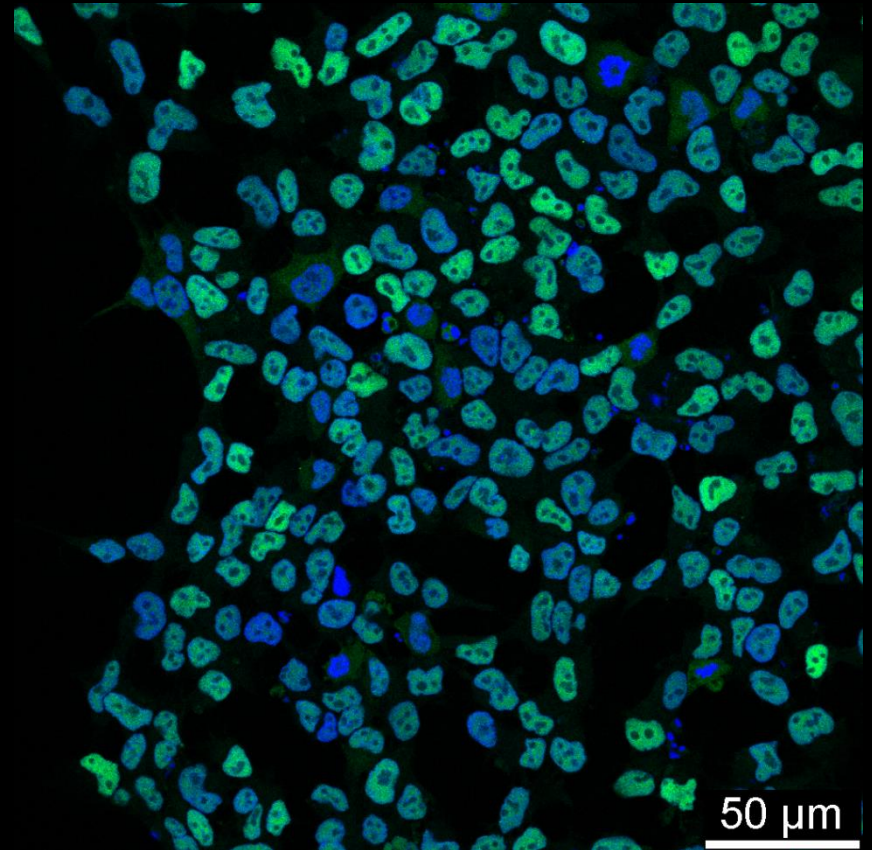


iso02LUMC0128iCRB01 Mesoderm

Brachyury CDX2 Vimentin Dapi

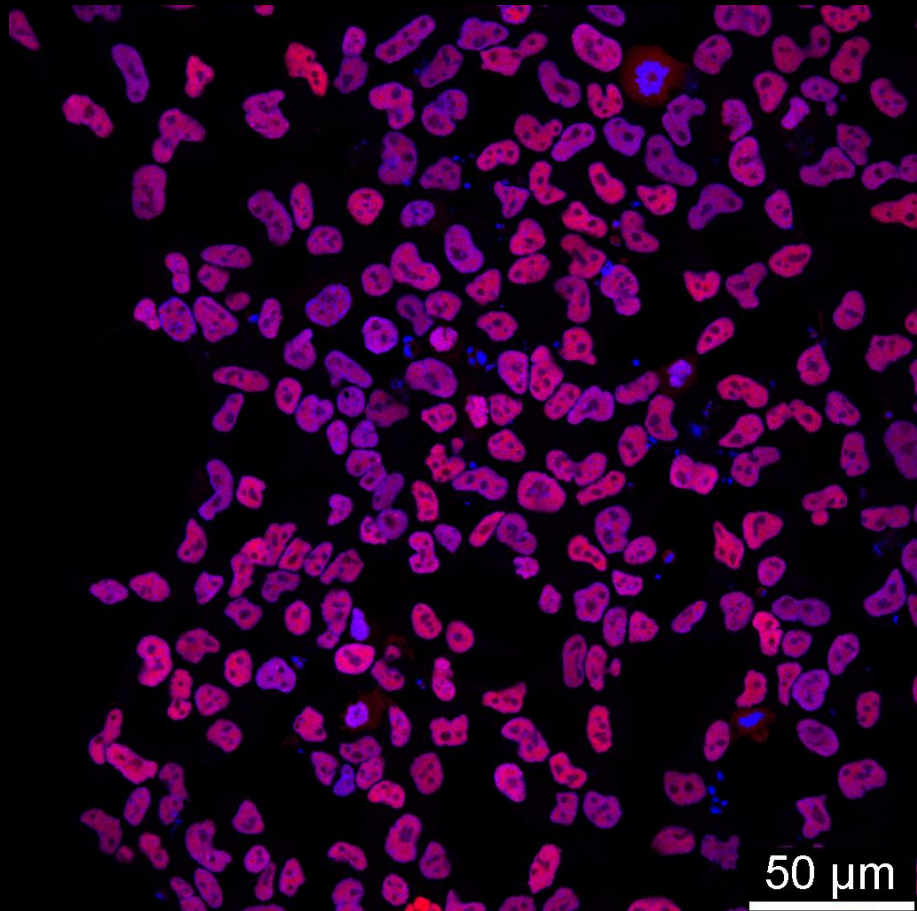


Brachyury Dapi

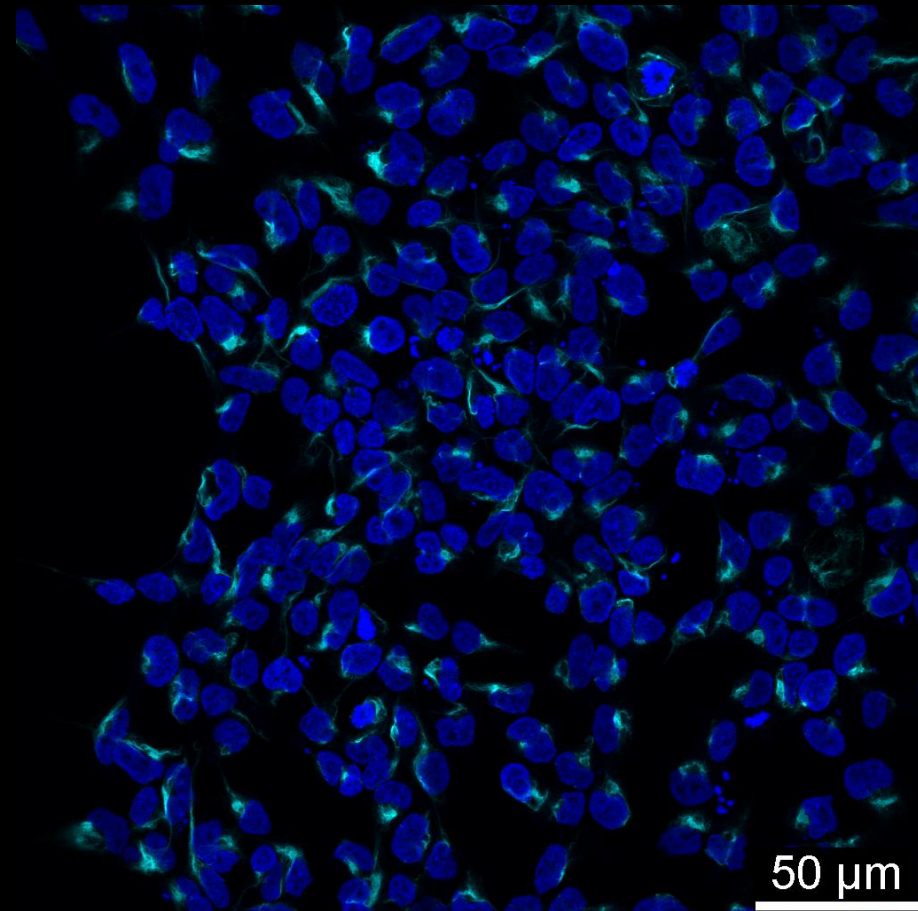


iso02LUMC0128iCRB01 Mesoderm

CDX1 Dapi



Vimentin Dapi

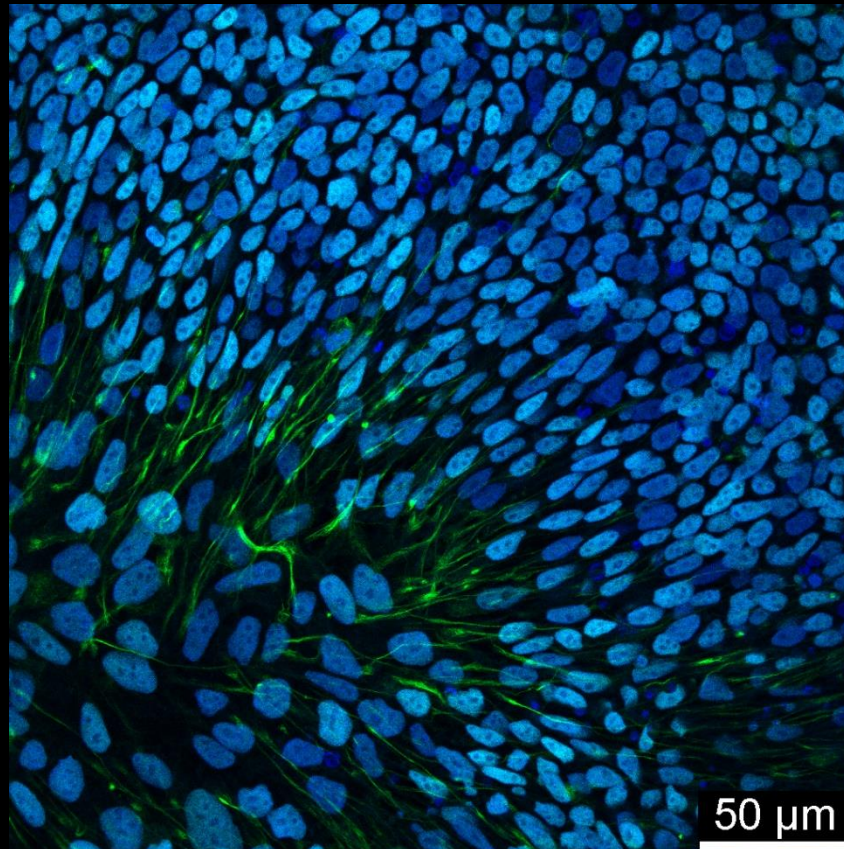


400x

iso05LUMC0128iCRB01

Ectoderm

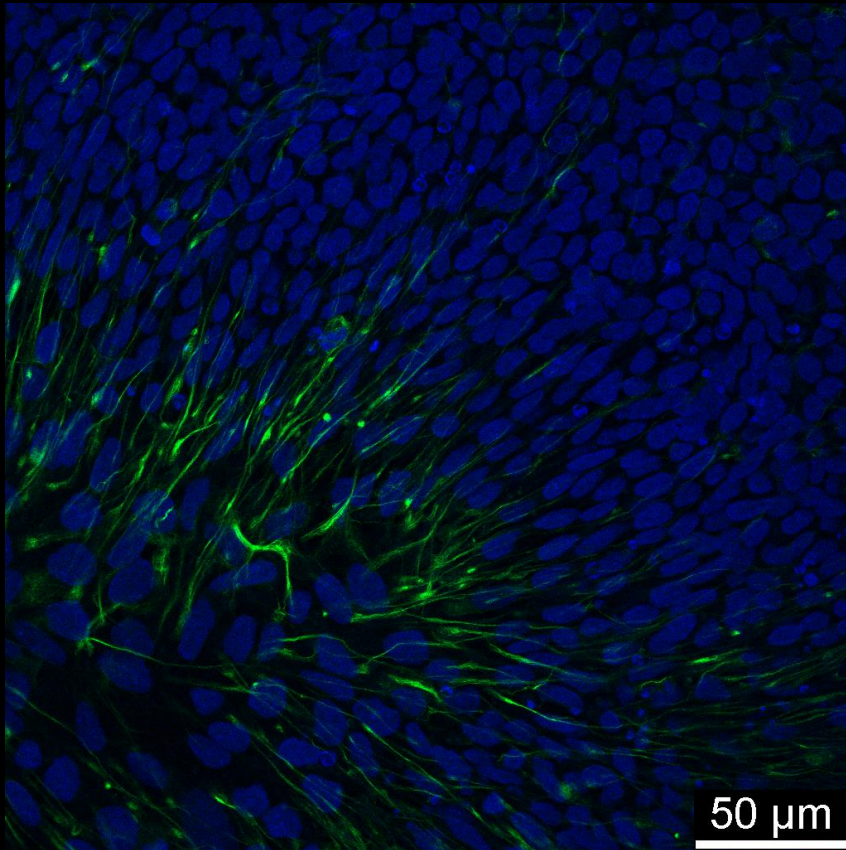
PAX6 Nestin DAPI



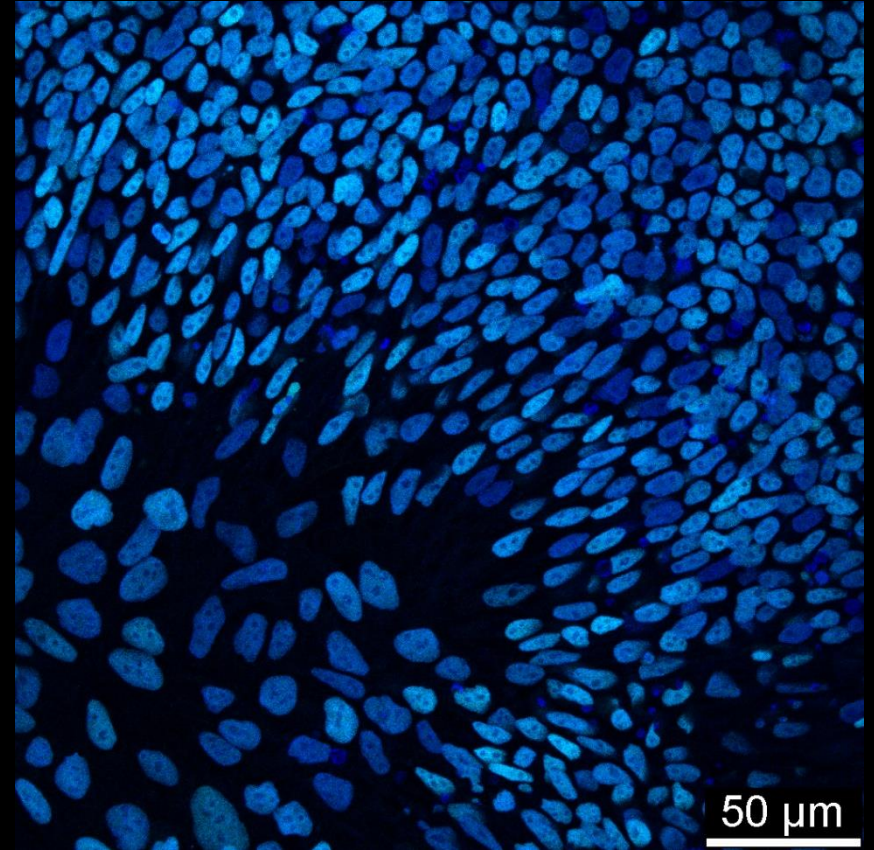
iso05LUMC0128iCRB01

Ectoderm

Nestin DAPI

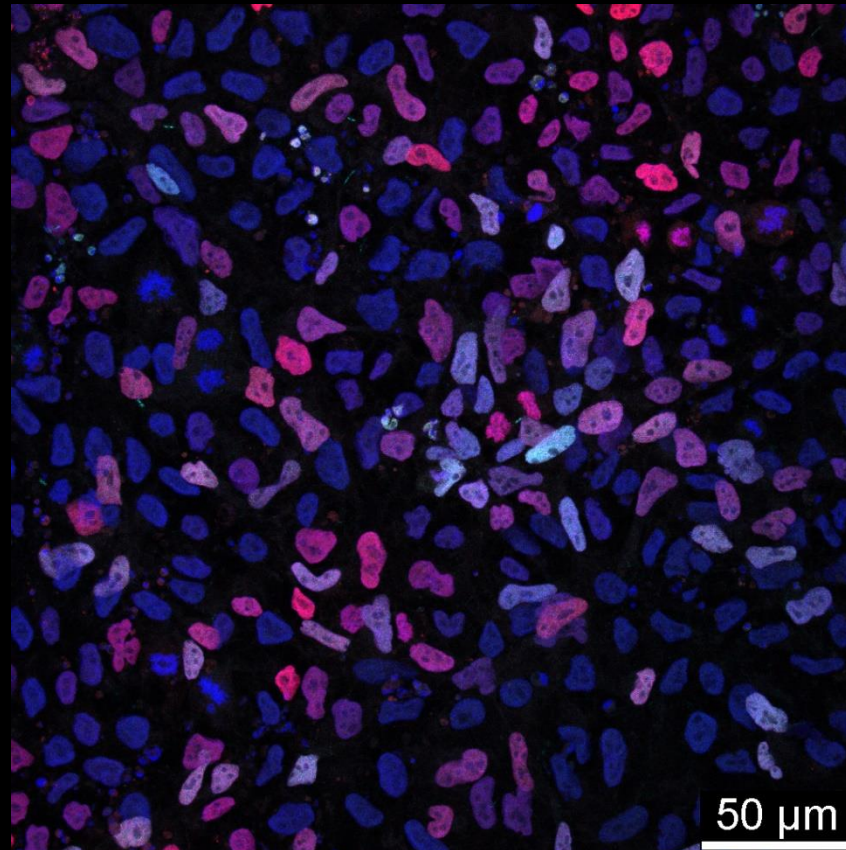


PAX6 Dapi



iso05LUMC0128iCRB01 Endoderm

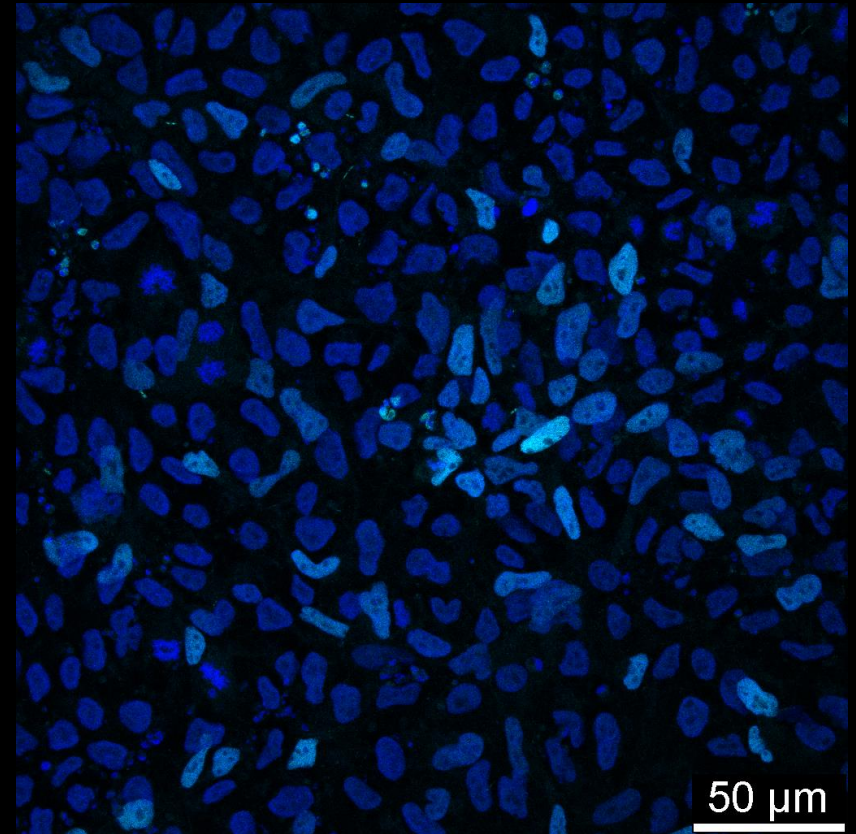
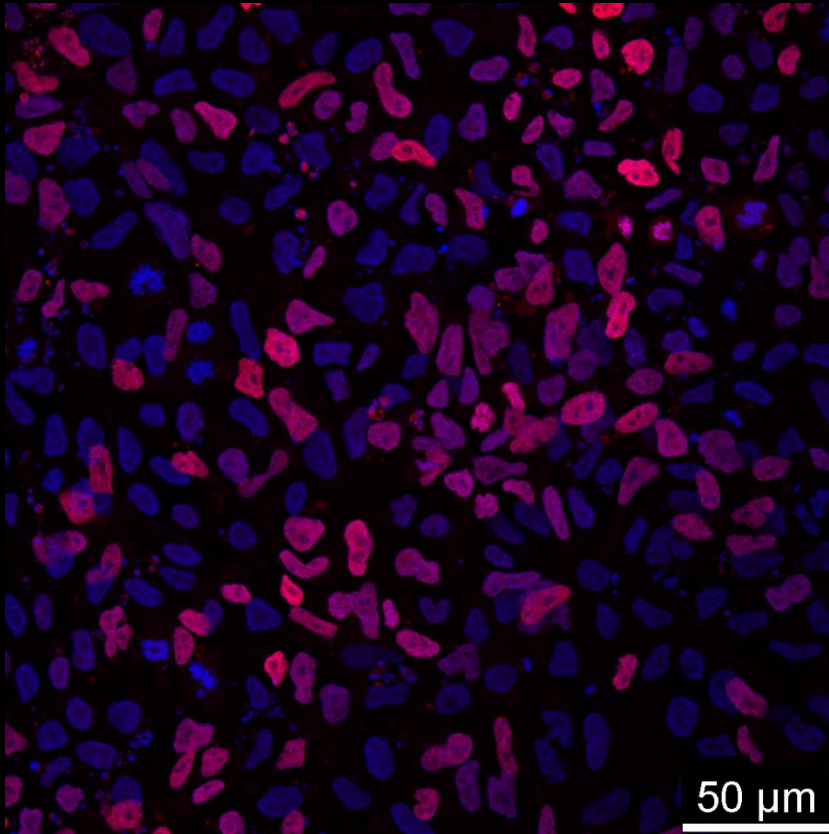
FOXA2 GATA4 Dapi



iso05LUMC0128iCRB01 Endoderm

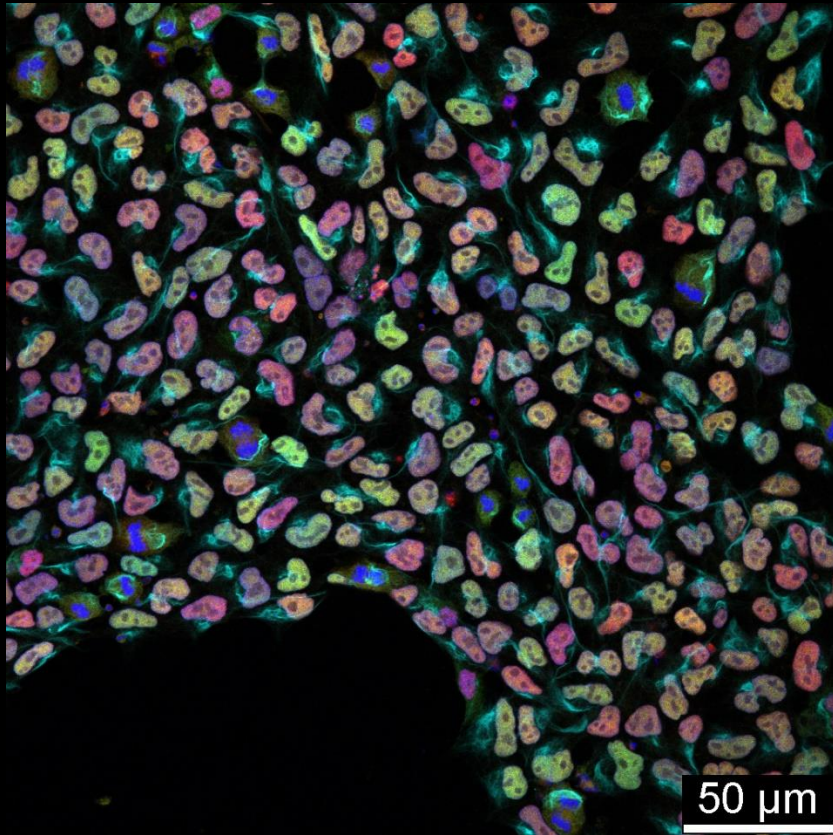
FOXA2 Dapi

GATA4 Dapi

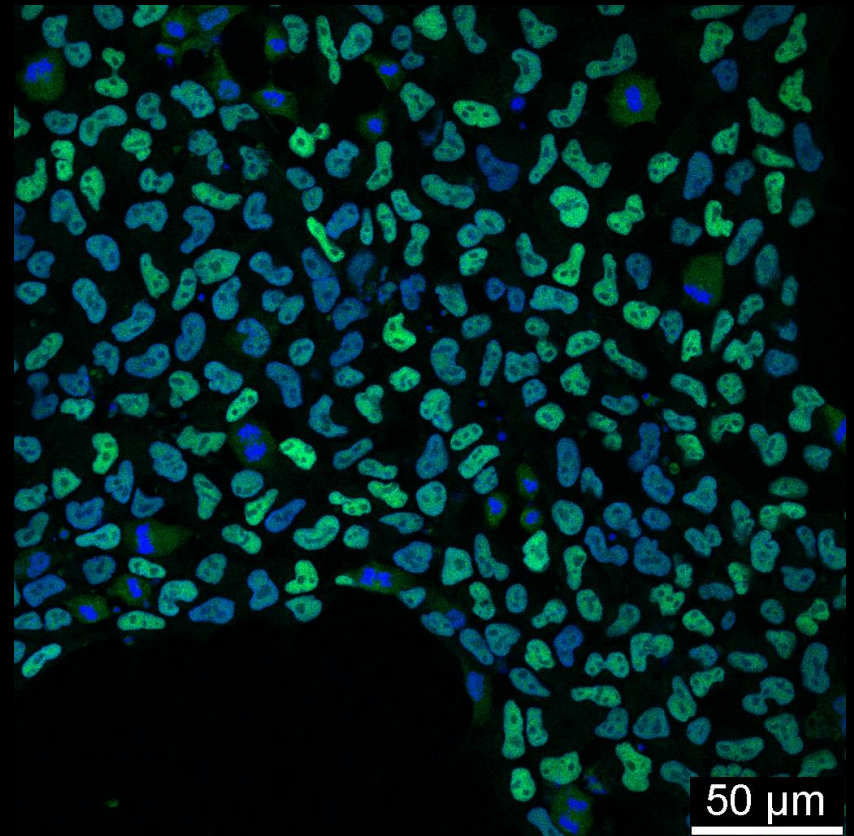


iso05LUMC0128iCRB01 Mesoderm

Brachyury CDX2 Vimentin Dapi

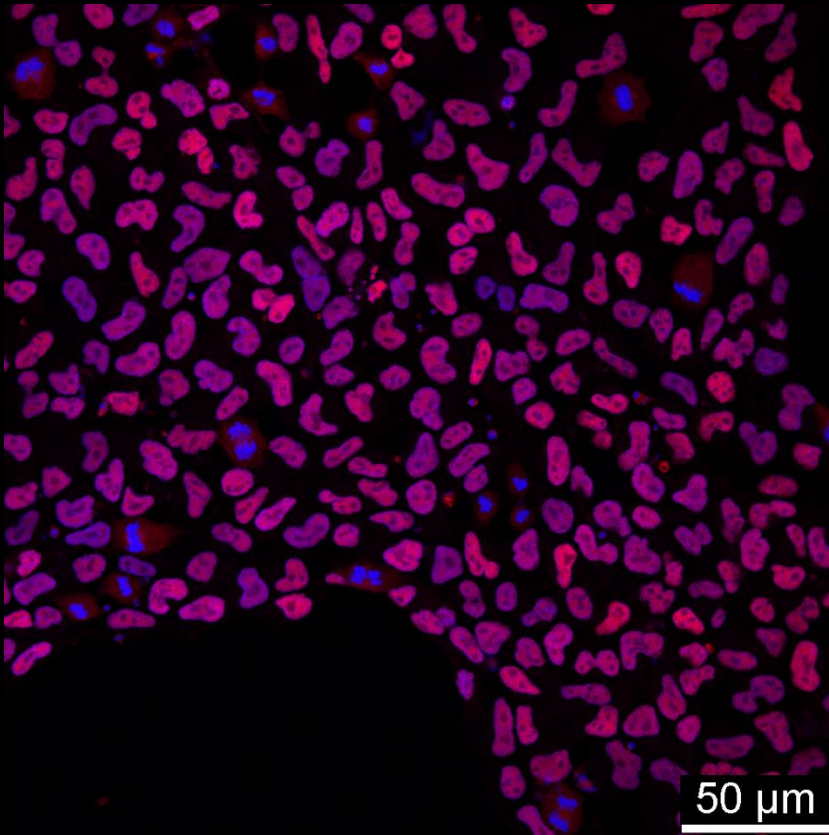


Brachyury Dapi

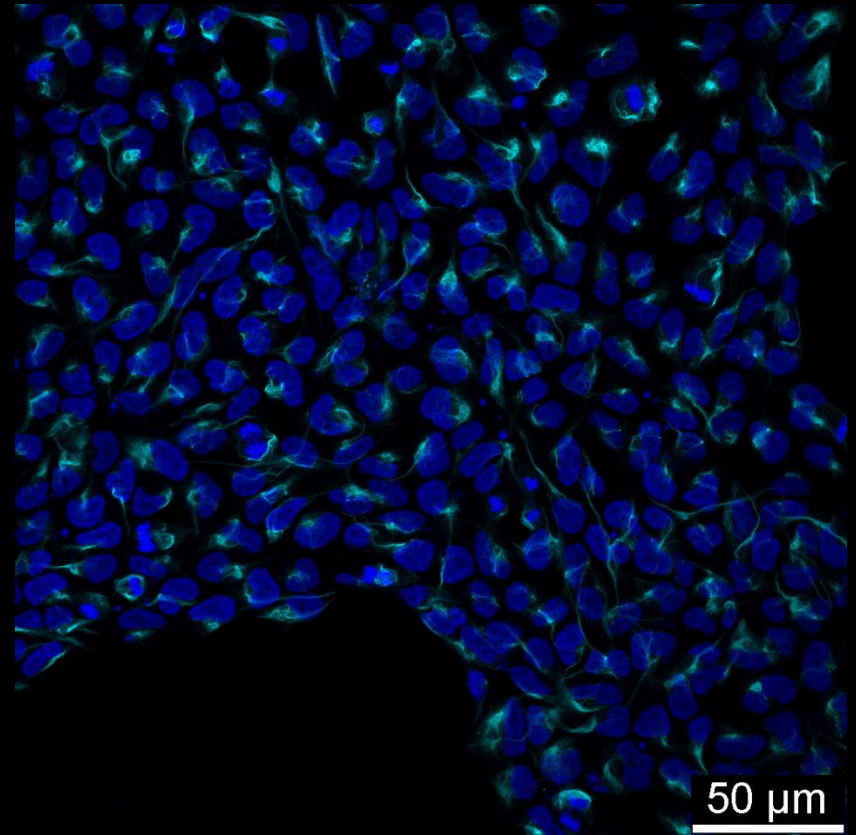


iso05LUMC0128iCRB01 Mesoderm

CDX1 Dapi



Vimentin Dapi



400x

Conclusion

Clone	Pluripotency markers (>75% OCT4/SSEA4/Nanog)	Ectoderm	Endoderm	Mesoderm
01	✓	✓*	✓	✓
02	✓	✓	✓	✓
05	✓	✓	✓	✓

* No clear Nestin signal seen for this clone.