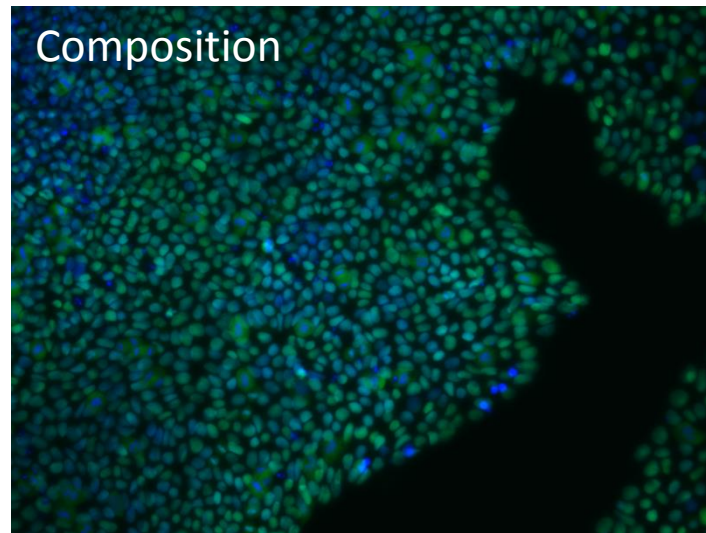
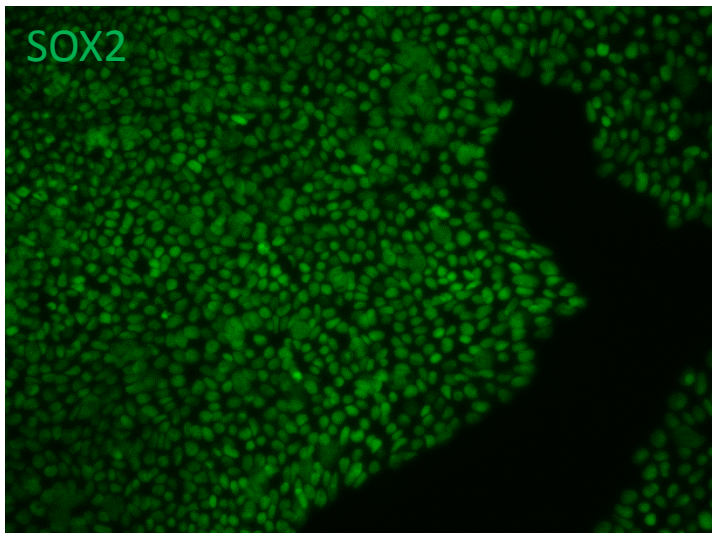
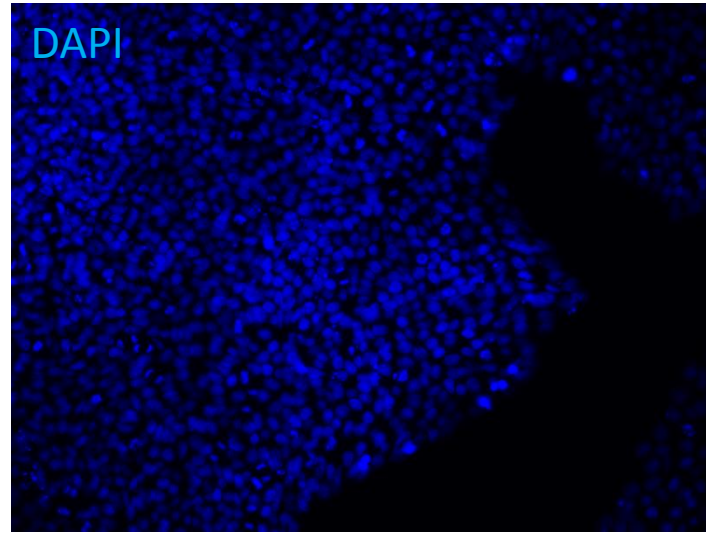
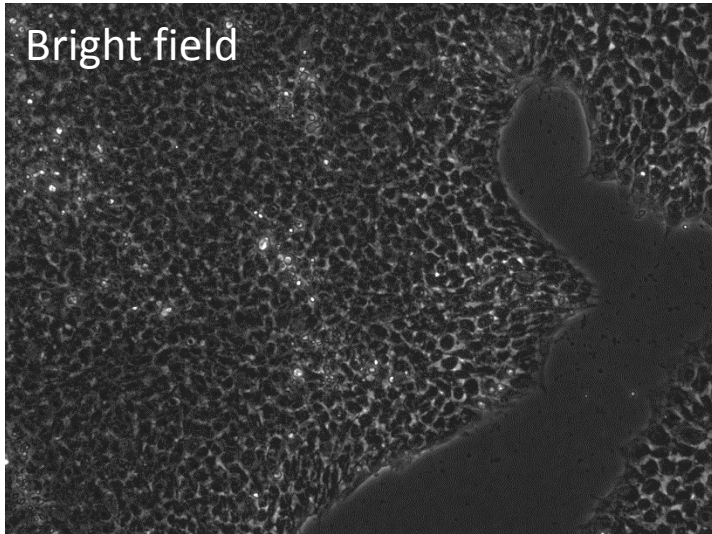


ULEIi001-A Sox2

Sox2 Cell Signaling 3579 rabbit monoclonal IgG

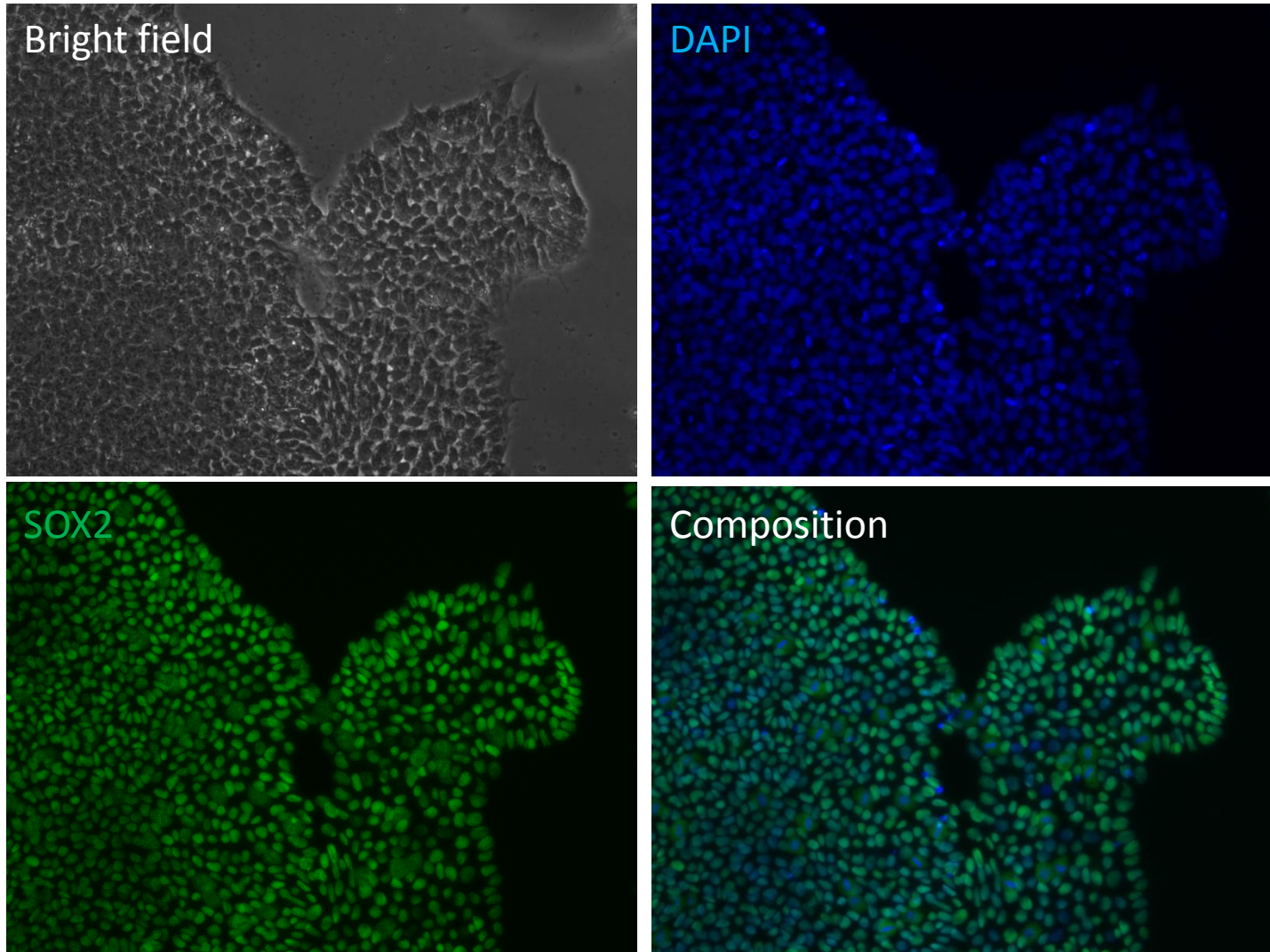
Secondary antibody Thermo Scientific goat anti-rabbit AF 488



ULEI001-A Sox2

Sox2 Cell Signaling 3579 rabbit monoclonal IgG

Secondary antibody Thermo Scientific goat anti-rabbit AF 488

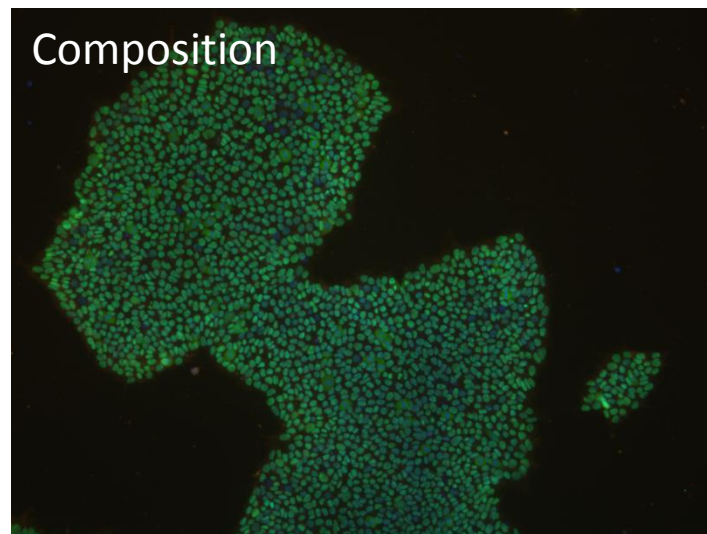
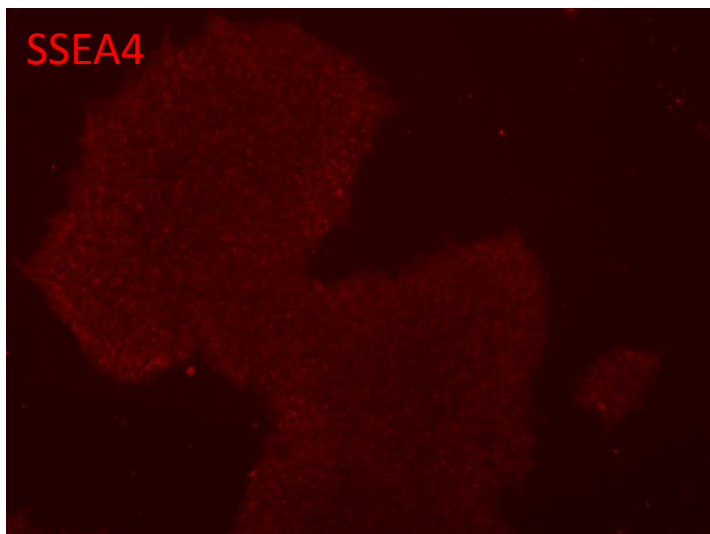
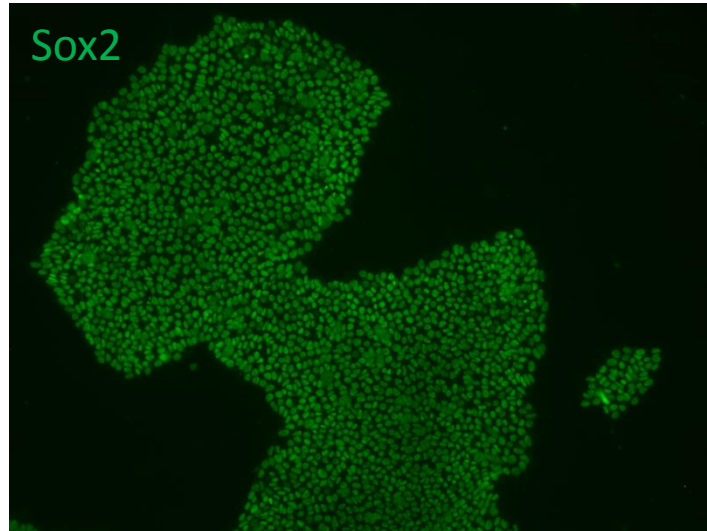
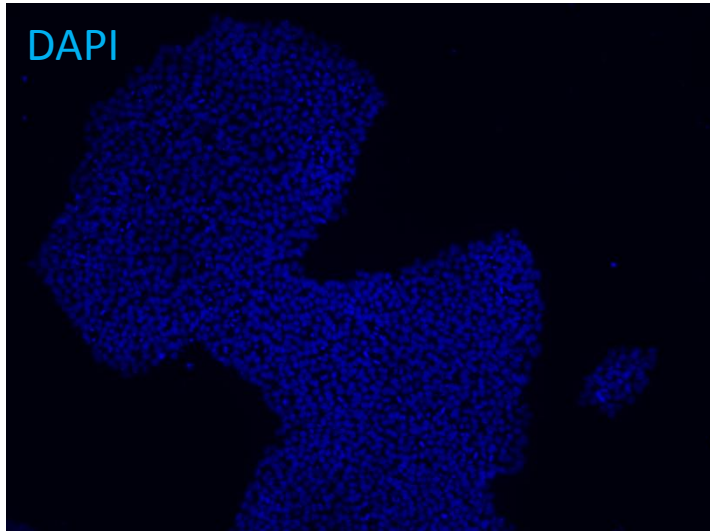


ULEI001-A Sox2

Sox2 Cell Signaling 3579 rabbit monoclonal IgG

SSEA4 Thermo Scientific MA1-21 mouse monoclonal IGG 3

Secondary antibody Thermo Scientific goat anti-rabbit AF 488, goat anti-mouse AF 633



Staining procedure

- Negative control – human skin fibroblasts
- Positive control – commercial iPS cell line Gibco Episomal hiPSC line (**A18945 Life Technologies**)
- Fixation 4% of paraformaldehyde
- Permeabilization 0,01% saponin
- Blocking 0,1% BSA
- Primary antibody incubation overnight (dilution 1:400), secondary antibody incubation 1h (dilution 1:1000)

Immunochemical stains were performed by MS Aniela Skrzypczyk