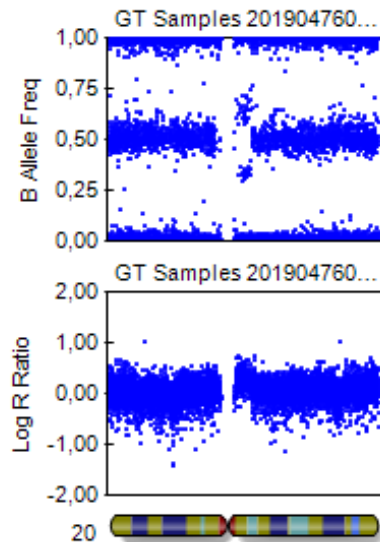


STBCi006-A3 [WS3]: Chromosome 20



- Gain on chromosome 20q

- Approx. 2 MB
- 11.21 – 11.22 region

- Affected genes:

- | | | | |
|-------------|-----------------|-------------|--------------|
| • ACSS2 | • CCM2L | • GGT2 | • PLAGL2 |
| • AHCY | • CDK5RAP1 | • HCK | • POFUT1 |
| • ASIP | • CHMP4B | • HM13 | • PXMP4 |
| • ASXL1 | • COMMD7 | • ID1 | • RALY |
| • BCL2L1 | • COX4I2 | • ITCH | • RALY-AS1 |
| • BPIFA1 | • DEFB116 | • KIF3B | • REM1 |
| • BPIFA2 | • DEFB119 | • LOC149950 | • SNTA1 |
| • BPIFA3 | • DEFB122 | • MACROD2 | • SUN5 |
| • BPIFA4P | • DEFB123 | • MAP1LC3A | • TM9SF4 |
| • BPIFB1 | • DEFB124 | • MAPRE1 | • TPX2 |
| • BPIFB2 | • DNMT3B | • MYLK2 | • TSPY26P |
| • BPIFB3 | • DUSP15 | • NCOA6 | • TTLL9 |
| • BPIFB4 | • DYNLLRB1 | • NECB3 | • XKR7 |
| • BPIFB6 | • E2F1 | • NOL4L | • ZNF341 |
| • C20orf203 | • EIF2S2 | • PDRG1 | • ZNF341-AS1 |
| • CBFA2T2 | • FRG1BP | • PIGU | |

- Mutation is found in all isogenic lines