

Post-Thaw Cell Viability

One distribution lot vial of the cell line was thawed and placed in culture. Cultures were observed daily. Colonies were photographed upon first appearance, then 4 days later. Colonies must double in diameter within 5 days. The area for 5 colonies was measured using CellSens software on the Olympus IX50 microscope at 40x magnification. The average area is reported here.

Day	Average area (μm^2)
1	7,648
5	242,155

Colony area increased by 32 fold.

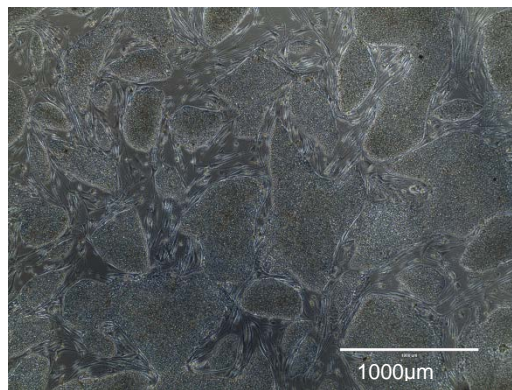
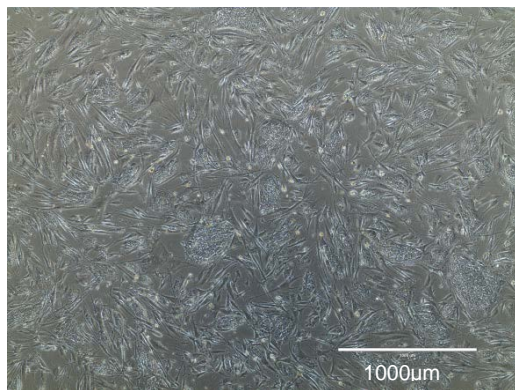


Figure 1A. Colonies post thaw (Day 1)

Figure 1B. Colonies 4 days after first observation (Day 5)

Alkaline Phosphatase Staining

Cells were stained using the StemTAG™ Alkaline Phosphatase Staining Kit from CellBiolabs, Inc.

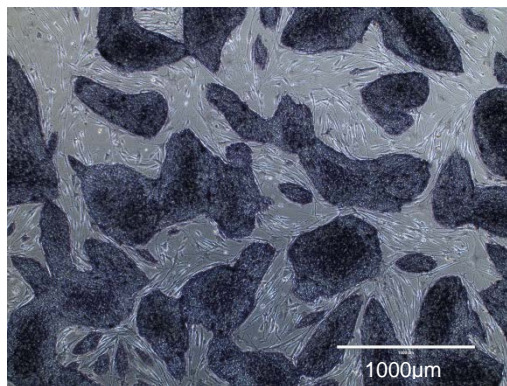


Figure 2. iPSC colonies showing alkaline phosphatase activity