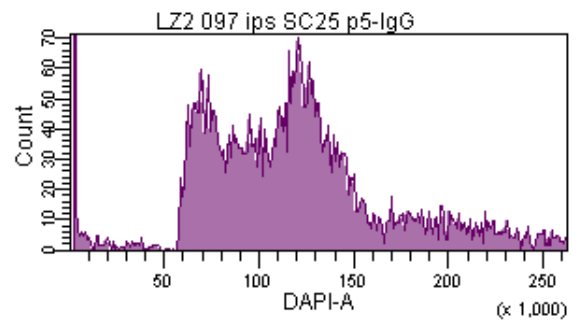
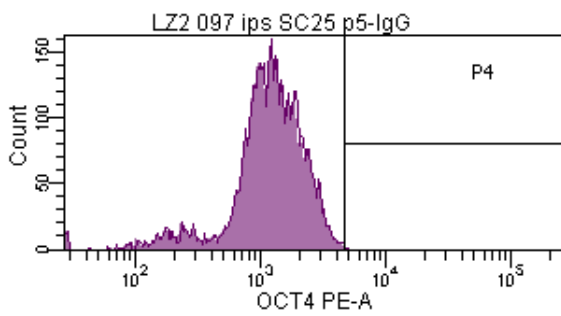
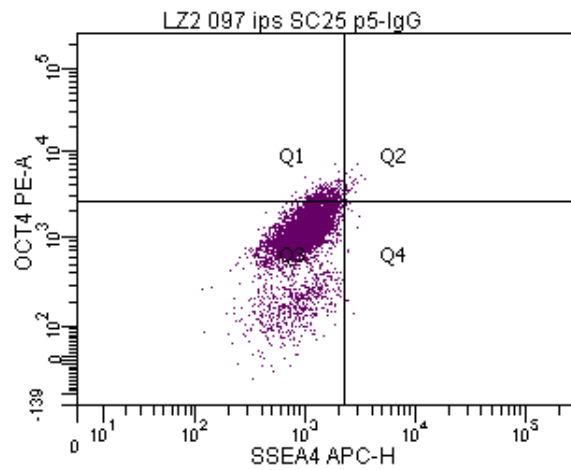
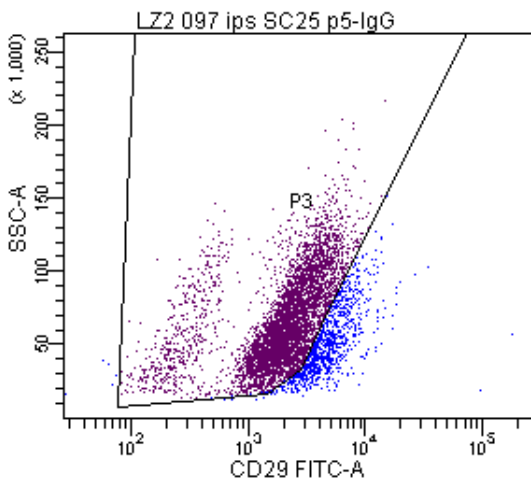
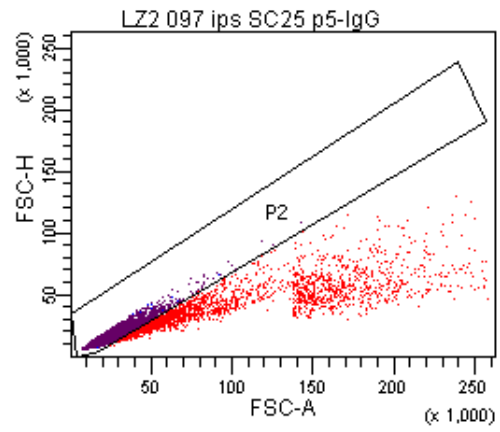
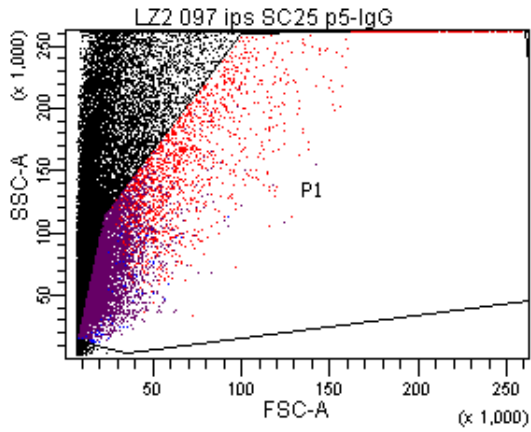


LZ02 097iPS-Sc25 p5 IgG Control

BD FACSDiva 8.0.1

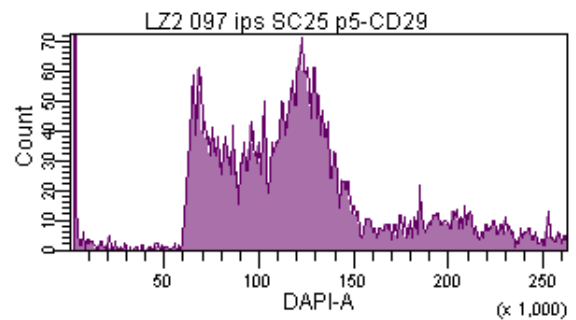
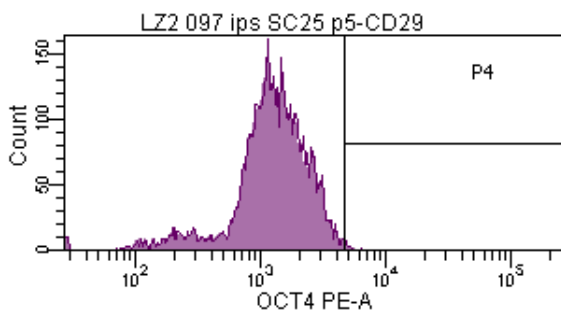
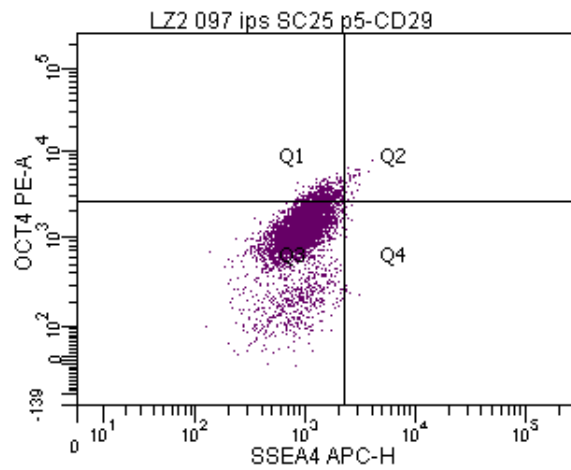
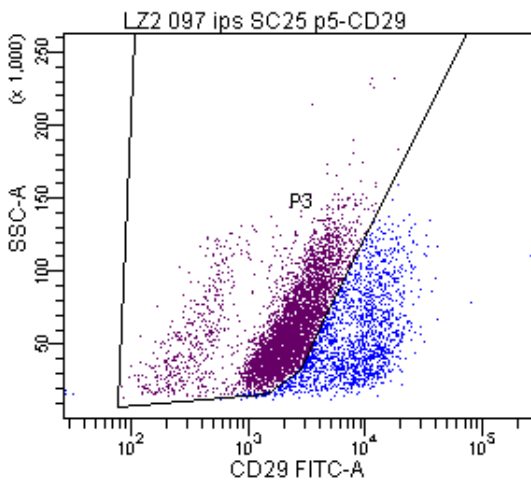
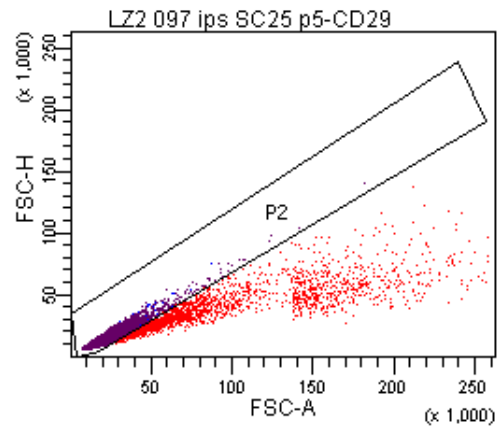
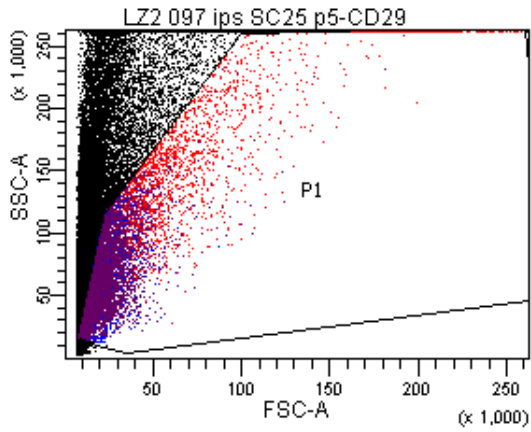


Tube: IgG

Population	#Events	%Parent	%Total
All Events	30,000	####	100.0
P1	8,538	28.5	28.5
P2	6,289	73.7	21.0
P3	5,337	84.9	17.8
Q1	378	7.1	1.3
Q2	30	0.6	0.1
Q3	4,911	92.0	16.4
Q4	18	0.3	0.1
P4	15	0.3	0.0

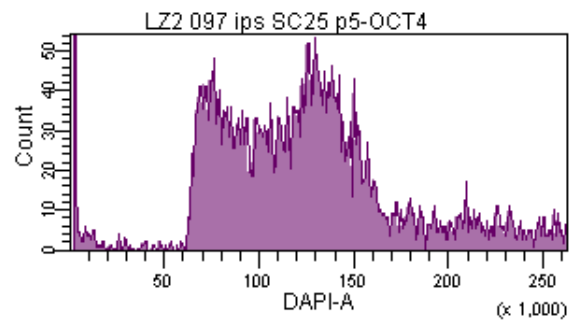
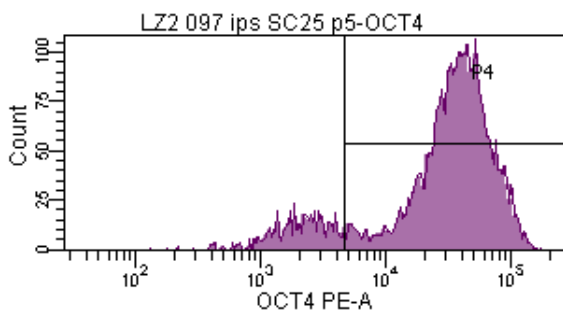
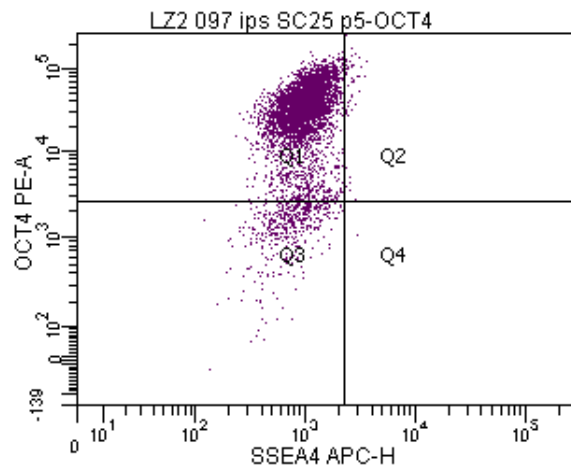
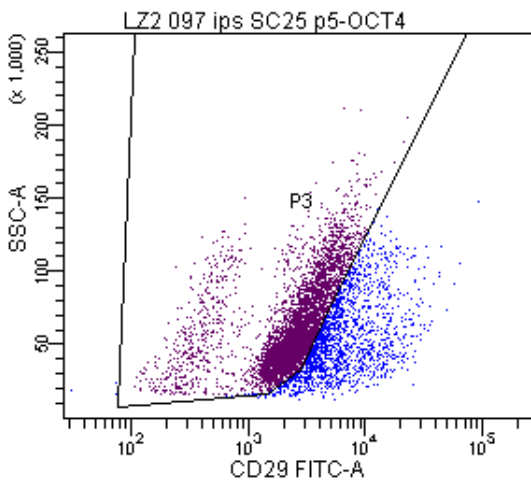
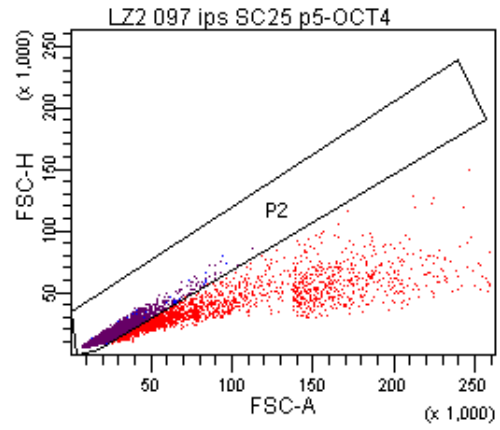
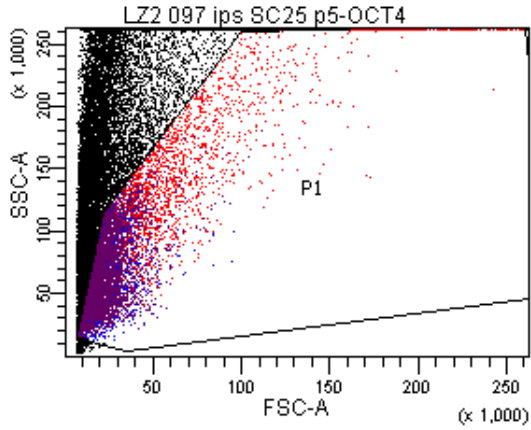
LZ02 097iPS-Sc25 p5 CD29 only

BD FACSDiva 8.0.1



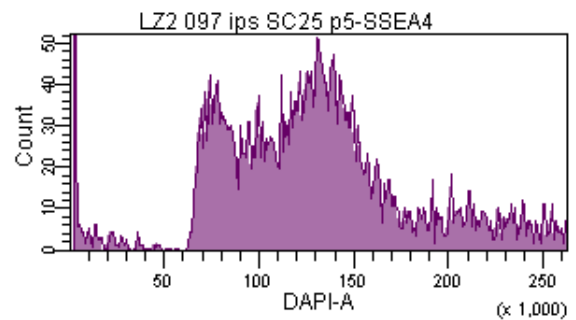
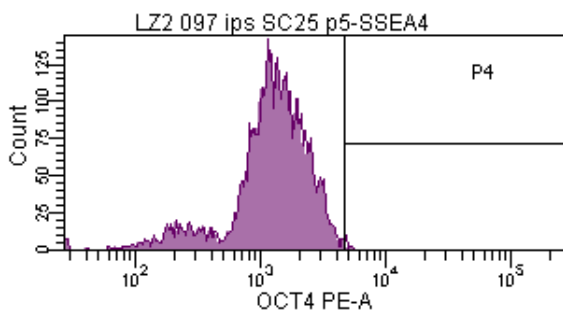
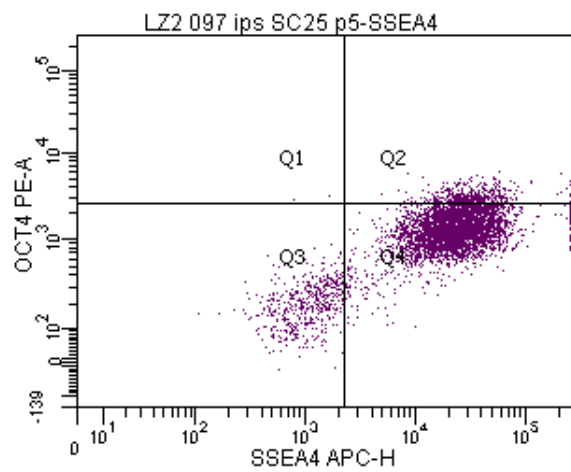
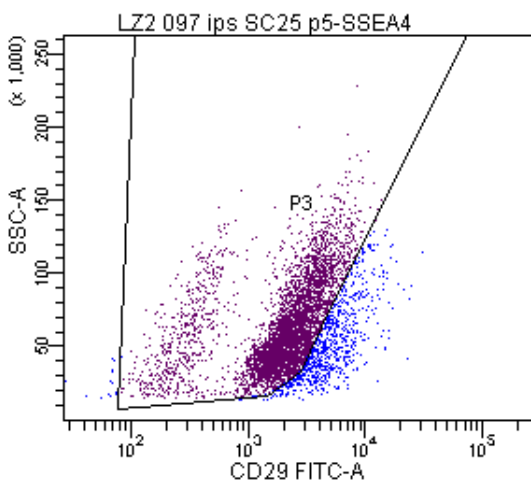
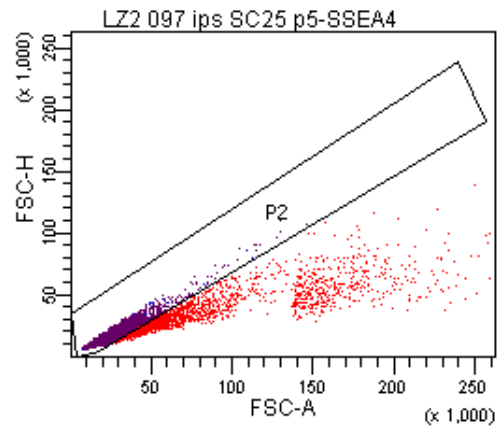
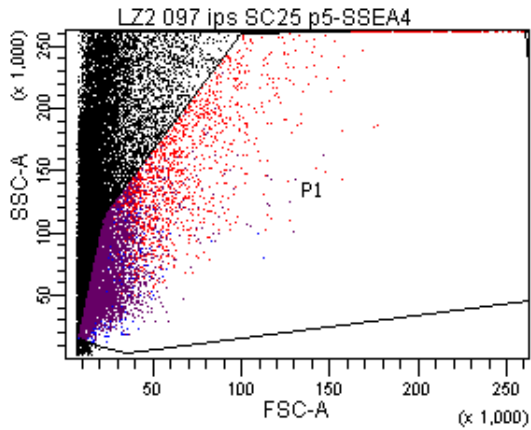
Tube: CD29

Population	#Events	%Parent	%Total
All Events	30,000	####	100.0
P1	8,900	29.7	29.7
P2	6,739	75.7	22.5
P3	5,023	74.5	16.7
Q1	494	9.8	1.6
Q2	35	0.7	0.1
Q3	4,476	89.1	14.9
Q4	18	0.4	0.1
P4	24	0.5	0.1



Tube: OCT4

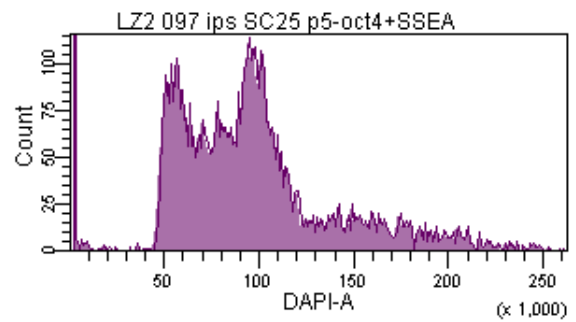
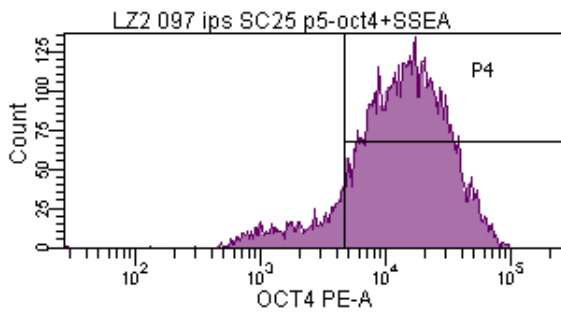
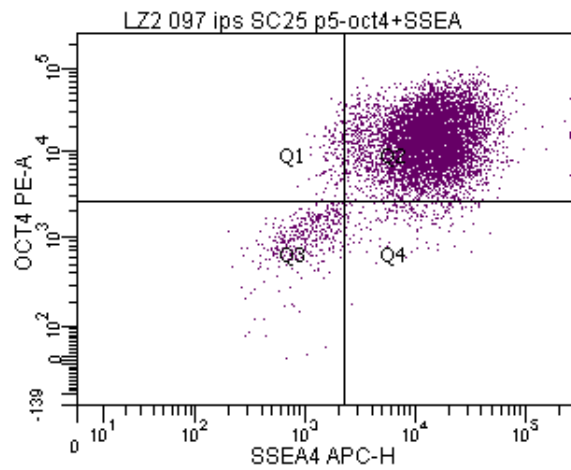
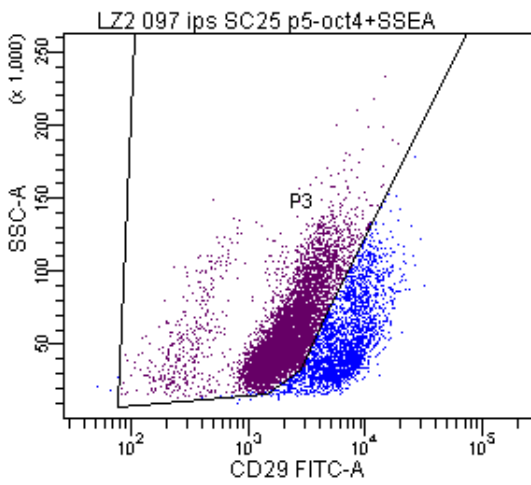
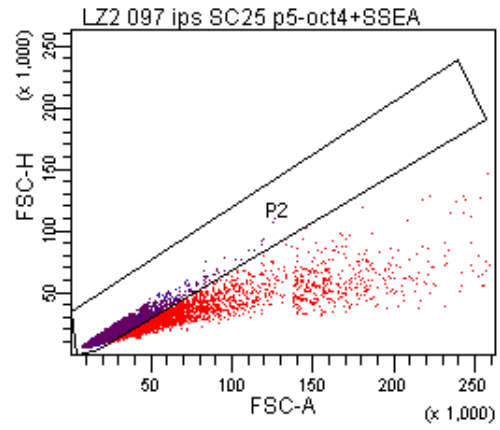
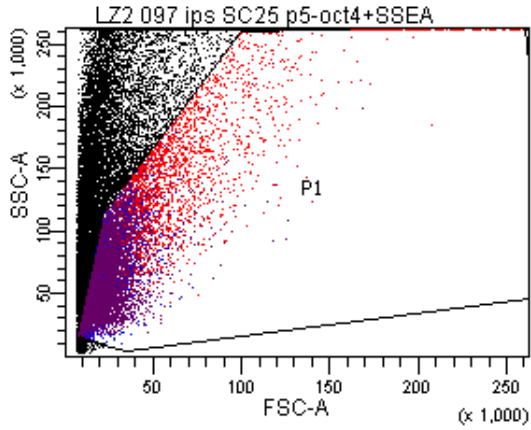
Population	#Events	%Parent	%Total
All Events	30,000	####	100.0
P1	8,414	28.0	28.0
P2	6,277	74.6	20.9
P3	4,620	73.6	15.4
Q1	4,107	88.9	13.7
Q2	54	1.2	0.2
Q3	458	9.9	1.5
Q4	1	0.0	0.0
P4	3,941	85.3	13.1



Tube: SSEA4

Population	#Events	%Parent	%Total
All Events	30,000	####	100.0
P1	7,170	23.9	23.9
P2	5,446	76.0	18.2
P3	4,689	86.1	15.6
Q1	2	0.0	0.0
Q2	471	10.0	1.6
Q3	507	10.8	1.7
Q4	3,709	79.1	12.4
P4	18	0.4	0.1

BD FACSDiva 8.0.1

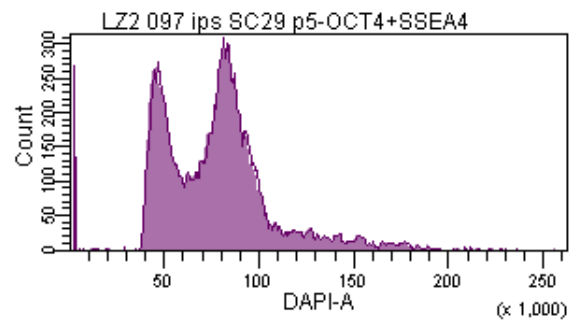
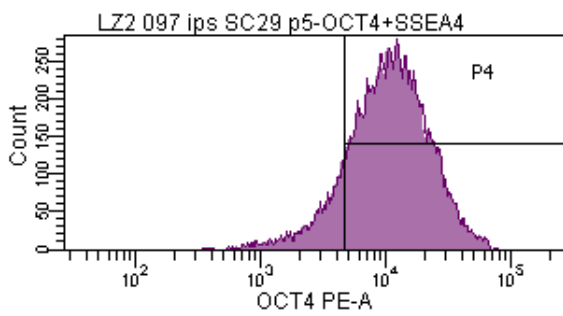
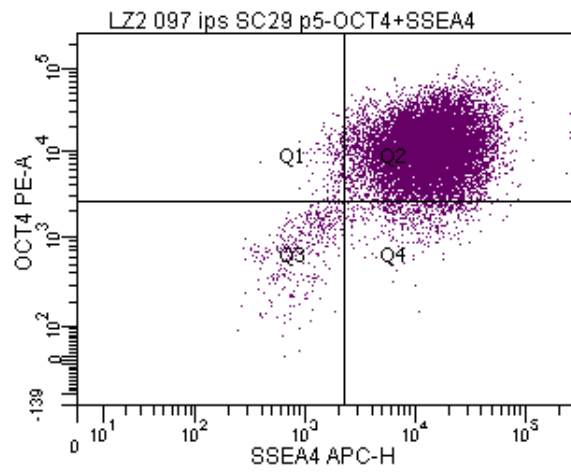
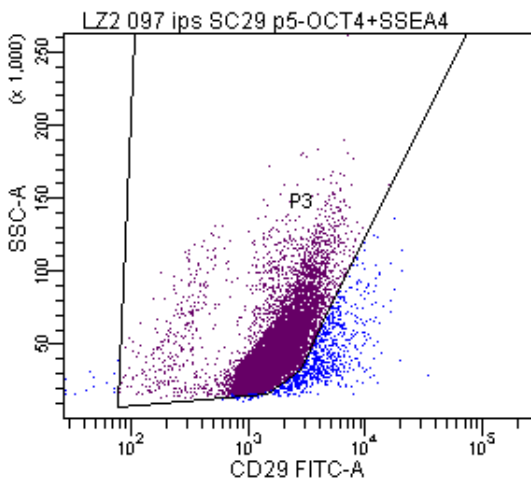
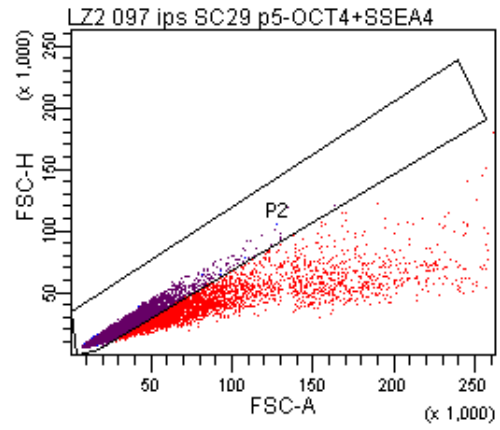
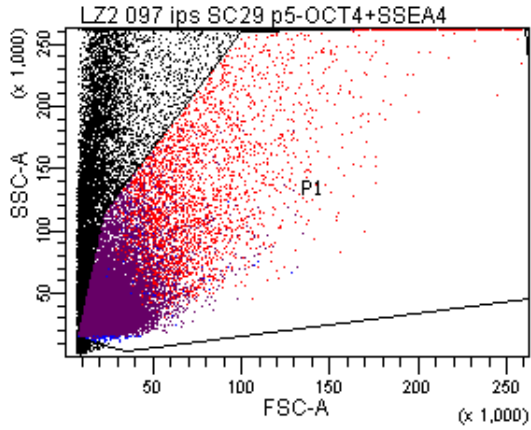


Tube: oct4+SSEA

Population	#Events	%Parent	%Total
All Events	30,000	####	100.0
P1	11,920	39.7	39.7
P2	9,396	78.8	31.3
P3	6,975	74.2	23.2
Q1	107	1.5	0.4
Q2	6,326	90.7	21.1
Q3	380	5.4	1.3
Q4	162	2.3	0.5
P4	6,004	86.1	20.0

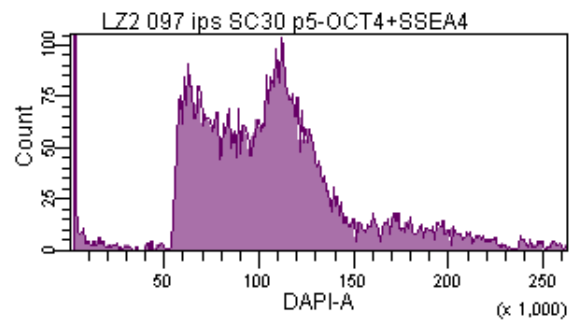
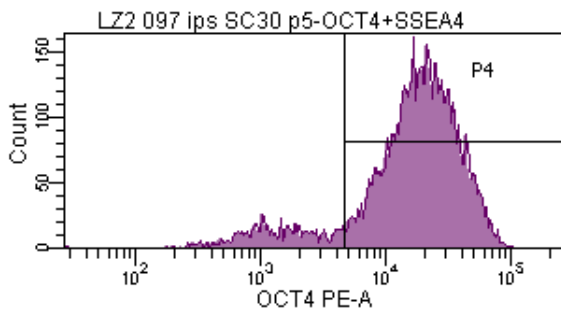
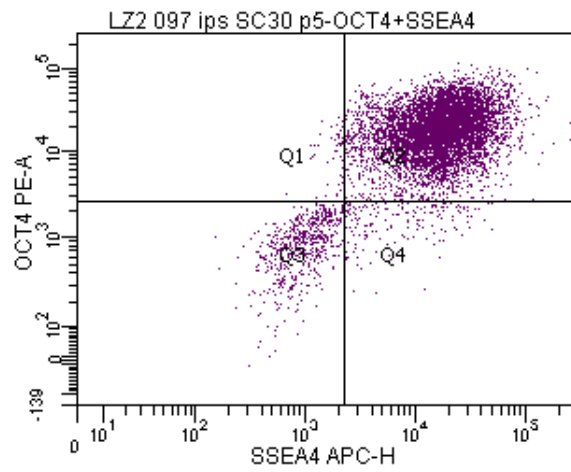
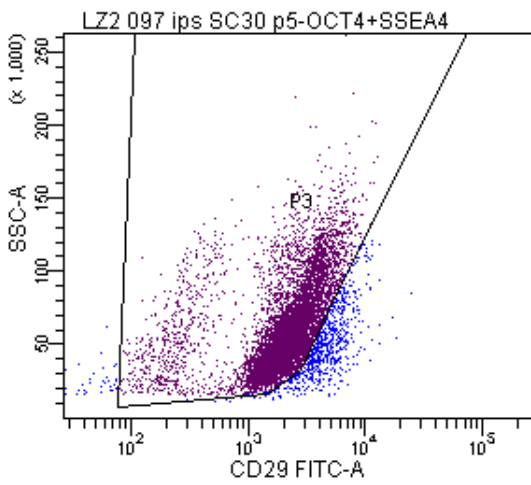
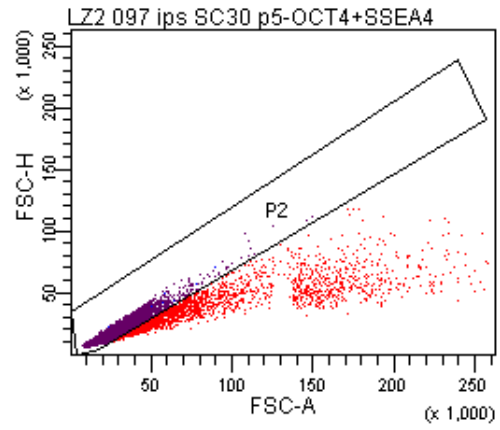
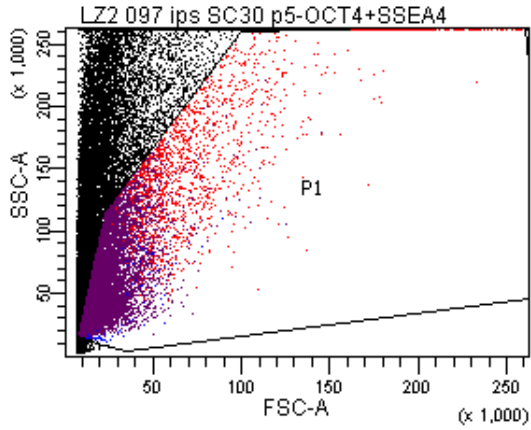
LZ02 097iPS-Sc29 p5 OCT4+/SSEA4+

BD FACSDiva 8.0.1



Tube: OCT4+SSEA4

Population	#Events	%Parent	%Total
All Events	30,000	####	100.0
P1	17,883	59.6	59.6
P2	14,112	78.9	47.0
P3	13,253	93.9	44.2
Q1	140	1.1	0.5
Q2	12,309	92.9	41.0
Q3	364	2.7	1.2
Q4	440	3.3	1.5
P4	11,133	84.0	37.1



Tube: OCT4+SSEA4

Population	#Events	%Parent	%Total
All Events	30,000	####	100.0
P1	10,042	33.5	33.5
P2	7,918	78.8	26.4
P3	7,176	90.6	23.9
Q1	54	0.8	0.2
Q2	6,358	88.6	21.2
Q3	590	8.2	2.0
Q4	174	2.4	0.6
P4	6,195	86.3	20.6