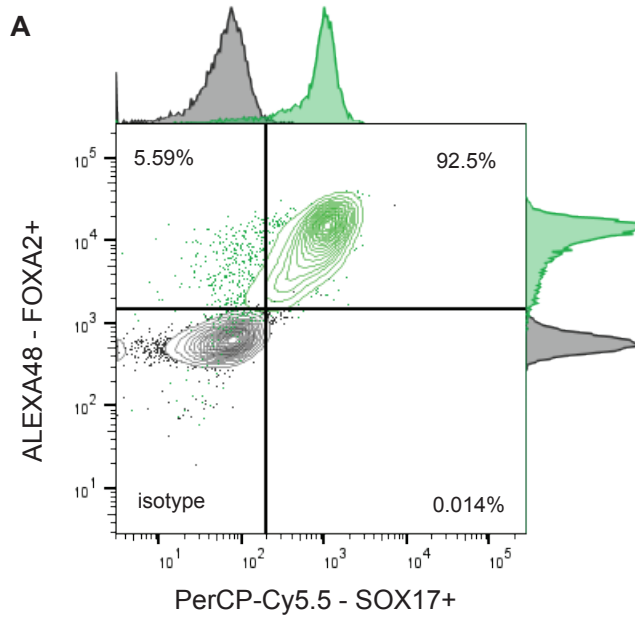
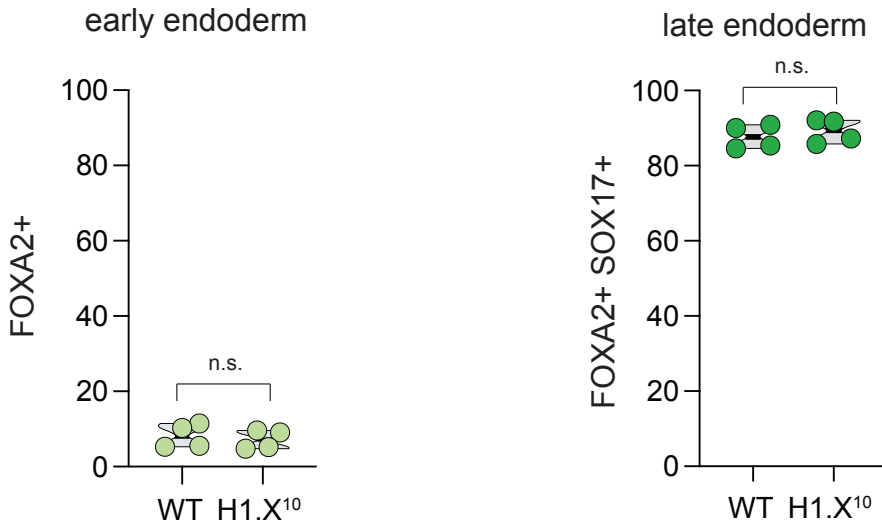


H1X¹⁰ endoderm FACS analysis



B



Flow cytometry analysis of direct endodermal differentiation of linker histone H1X hESC knockout cells (clone 10: H1X¹⁰).

(A) Contour plot of the population distribution and percentage of cells positive for FOXA2+ SOX17+. Isotype staining was performed as control. Result of a representative experiment is shown.

(B) Quantification of cell populations from (A) with FOXA2+ cells representing early endoderm (left) and FOXA2+/SOX17+ cells representing late endoderm (right). Truncated violin plot is shown. n=4 corresponding to two independent biological replicates (independent cell differentiation) and two technical replicates (FACS analysis). Black line denotes the mean; the p-values were determined by two tailed unpaired t-test.