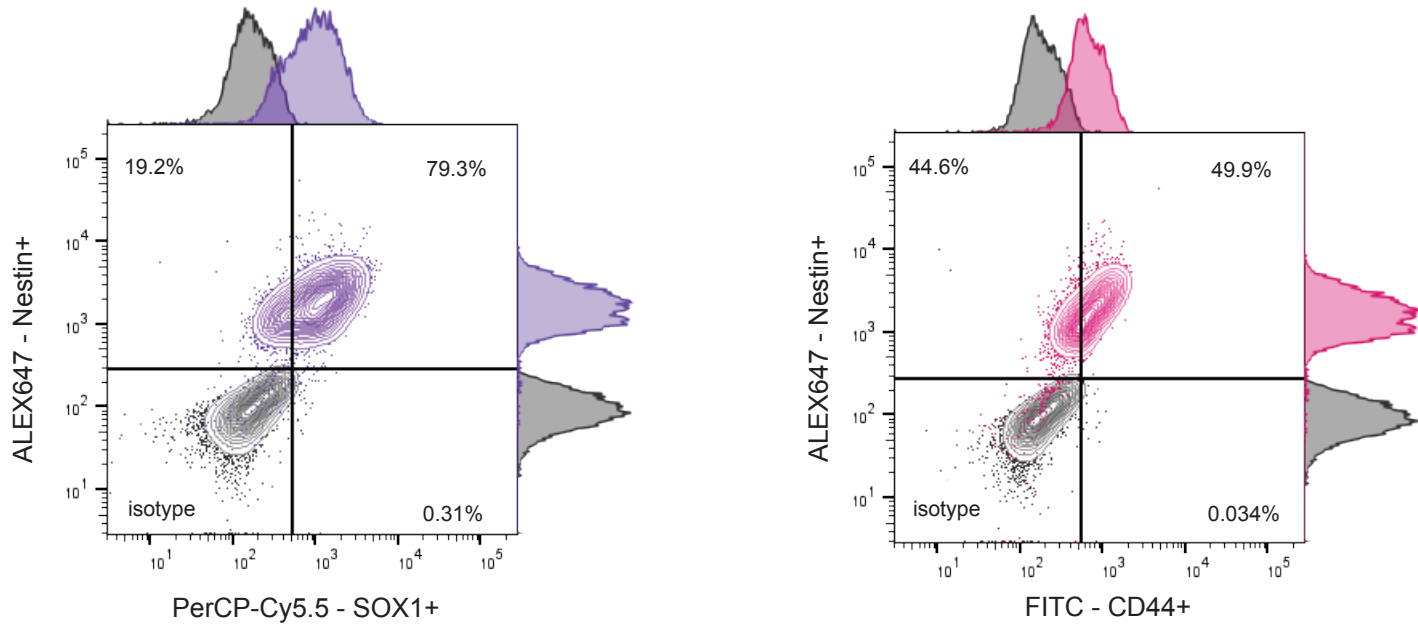
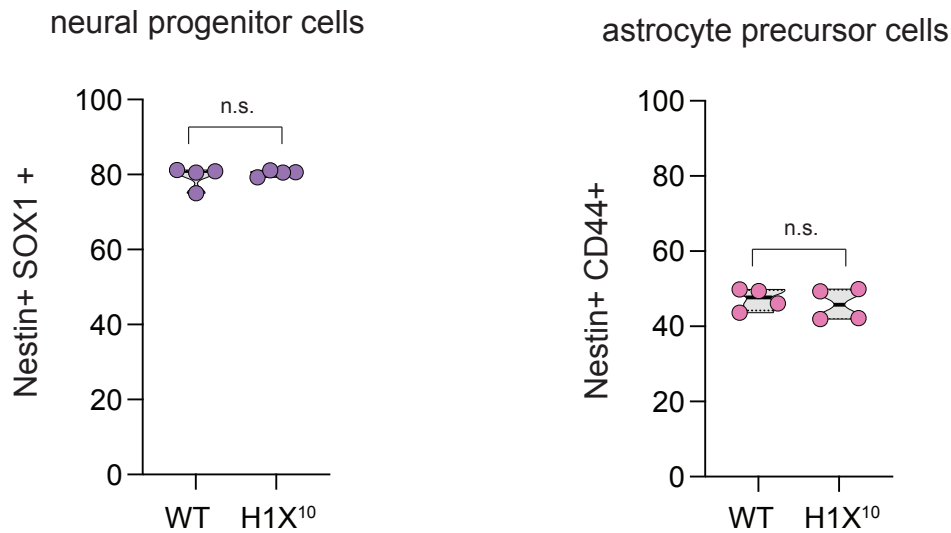


H1X¹⁰ ectoderm FACS analysis

A



B



Flow cytometry analysis of direct ectodermal differentiation of linker histone H1X hESC knockout cells (clone 10: H1X¹⁰).

(A) Contour plot of the population distribution and percentage of Nestin⁺/SOX1⁺ (left) and Nestin⁺/CD44⁺ cells (right). Isotype staining was performed as control. Result of a representative experiment is shown.

(B) Quantification of cell populations from (A) with Nestin⁺/SOX1⁺ cells representing neural progenitor cells (left) and Nestin⁺/CD44⁺ representing astrocyte precursor cells (right). Truncated violin plot is shown. n=4 corresponding to two independent biological replicates (independent cell differentiation) and two technical replicates (FACS analysis). Black line denotes the mean; the p-values were determined by two tailed unpaired t-test.