

Certificate of analysis

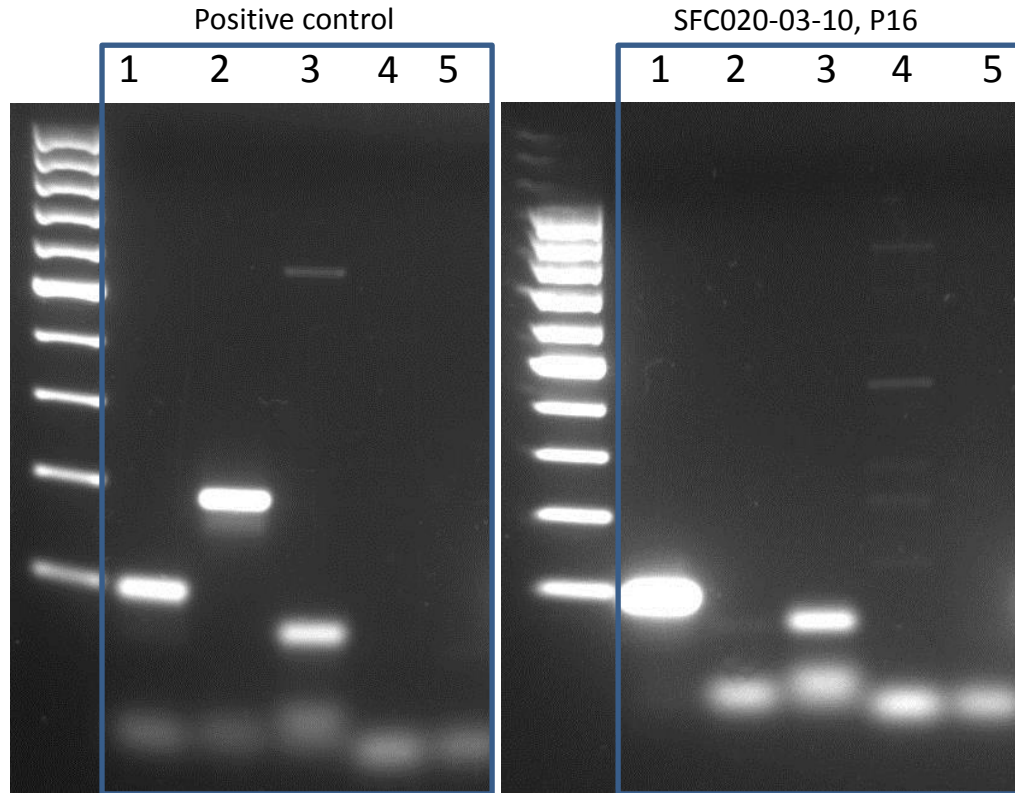
SFC-020-03-02

Source of fibroblasts

SF020, migraine patient, biopsy taken in Glostrup

#	Primer
1	GAPDH
2	SeV
3	c-MYC
4	KLF4
5	KOS

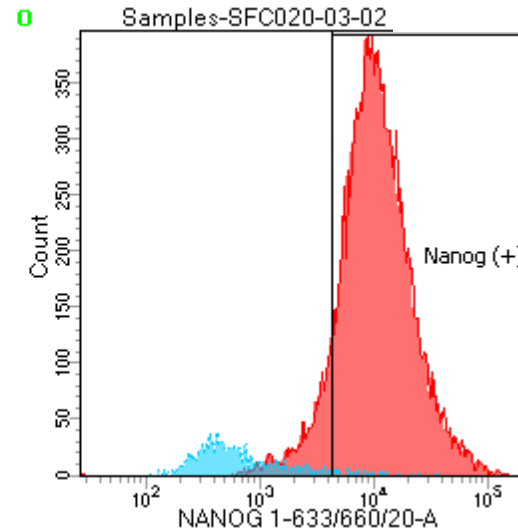
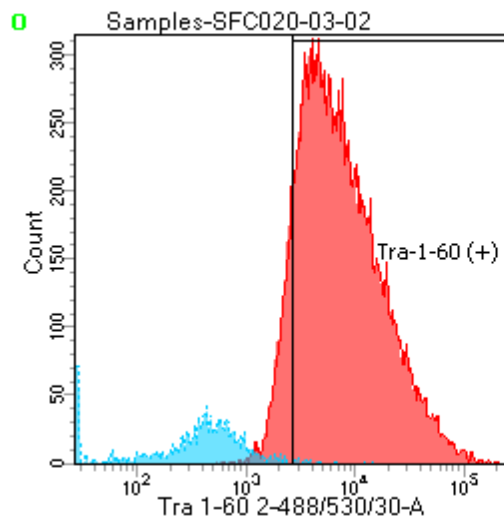
Sendai Clearance



Flow cytometric analysis

TRA-1-60: 88.0%

NANOG: 88.6%



CytoSNP analysis

Identity to parent fibroblasts

- Parental Identity Confirmed
- Audit 21/07/2017

Karyotype abnormalities

- Minor C8 deletion
- For details and raw data, refer to the SB database

Specific notes